

Invisible Mounts  
for  
Native American Artifacts

by Earl Lock



31



30



28



29

**KACHINA DOLLS ASSOCIATED  
WITH THE SUMMER CEREMONIES**



Holes drilled in backs  
of Kachina Dolls so  
mounts are invisible  
from the front





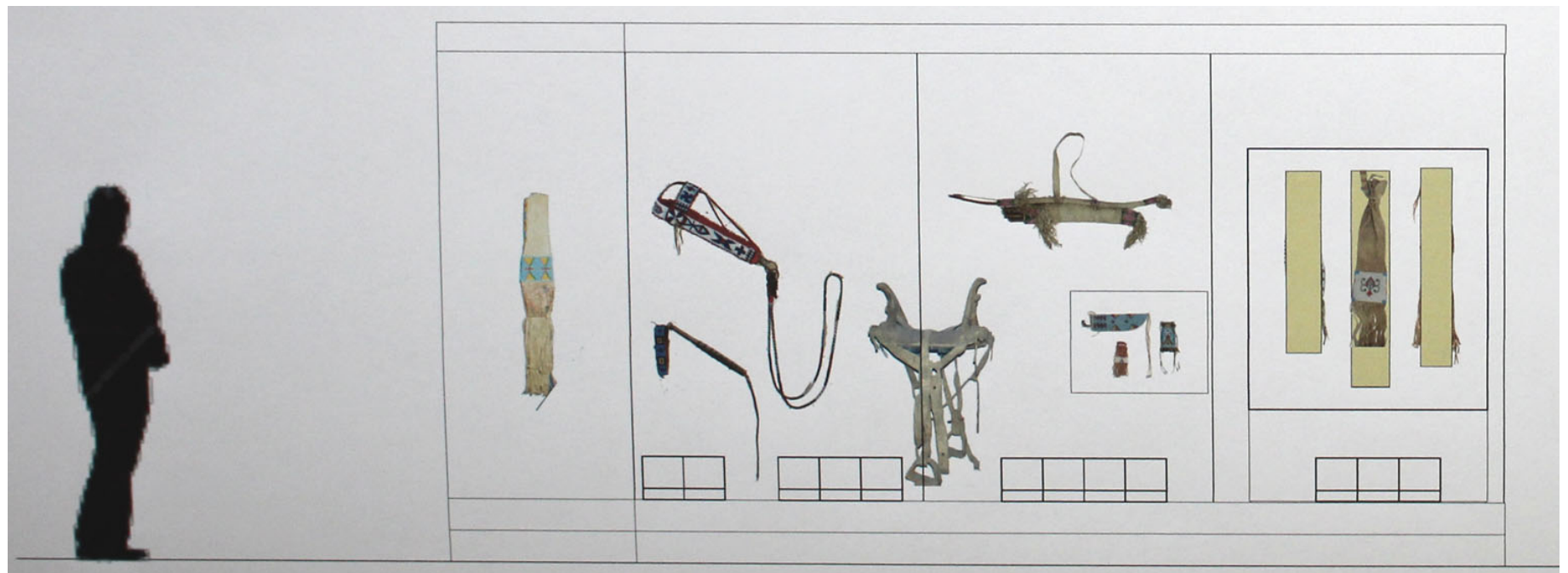
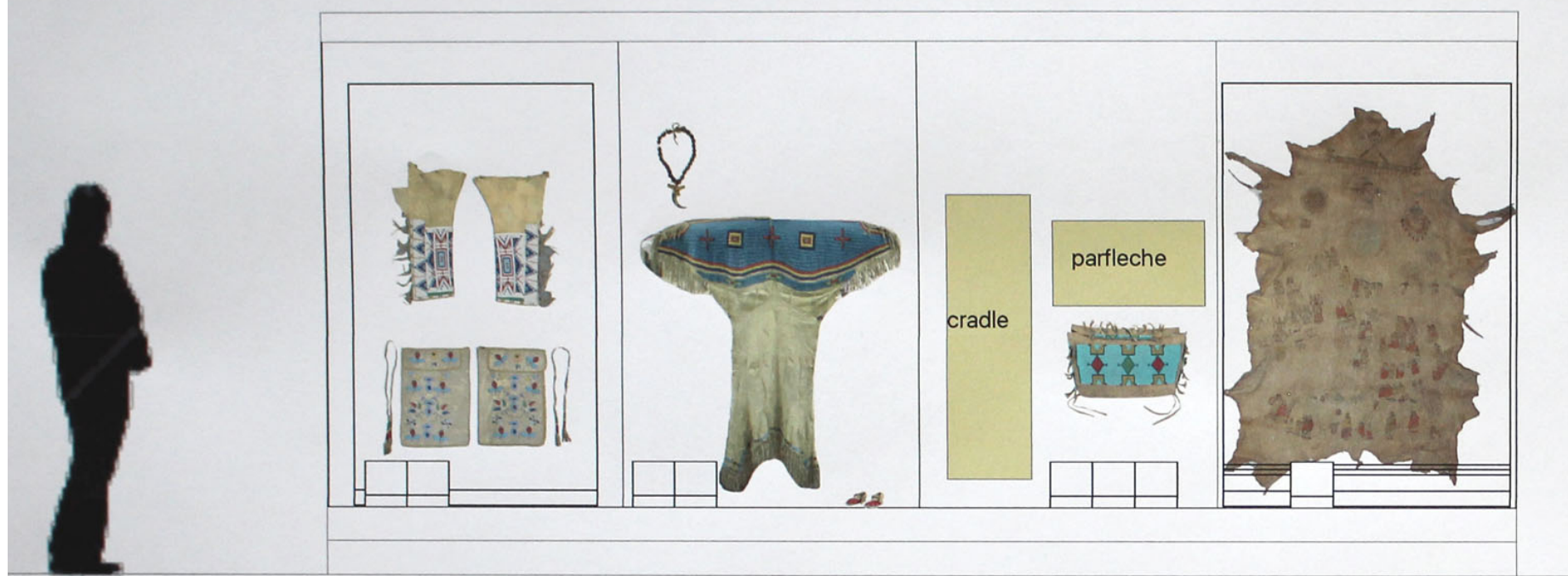


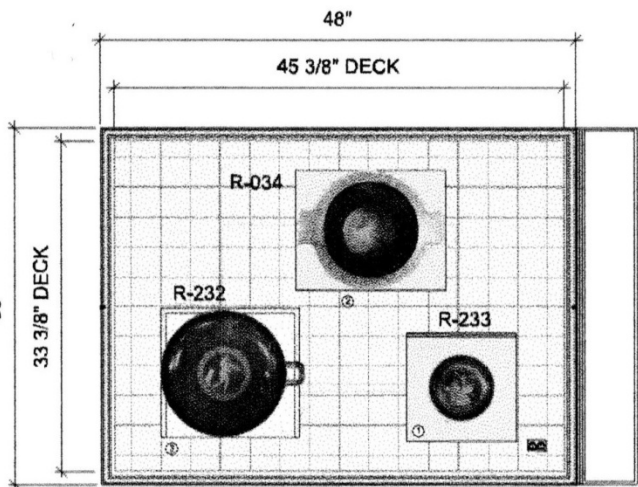


Holes cut in  
bottom of  
Moccasins so that  
the mannequin  
support rod is not  
visible.

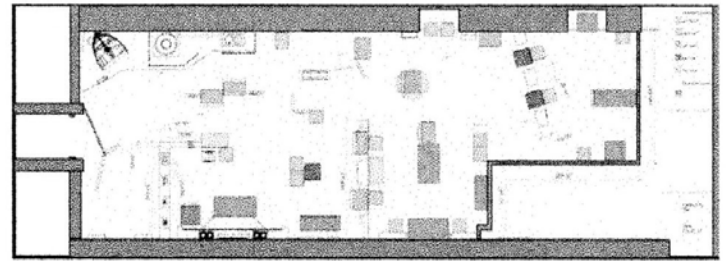


Do not do  
this!!!

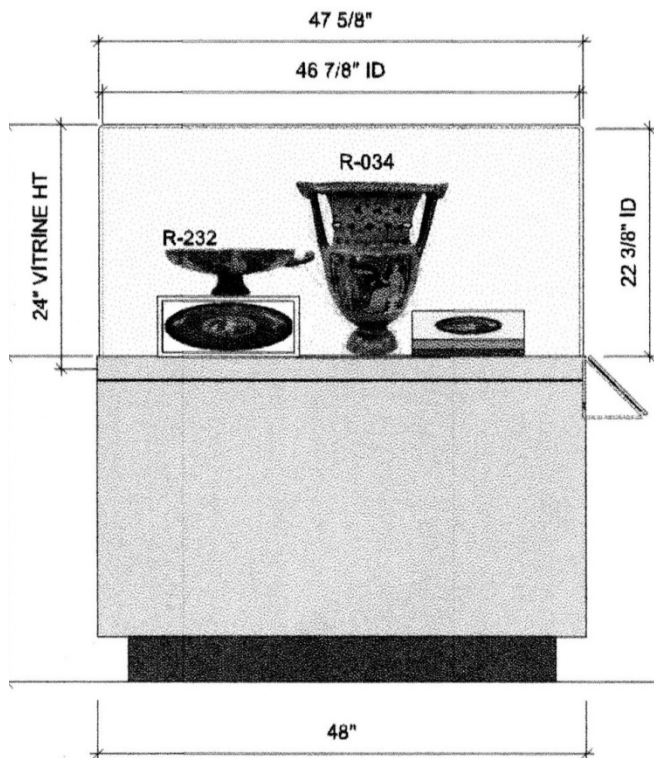




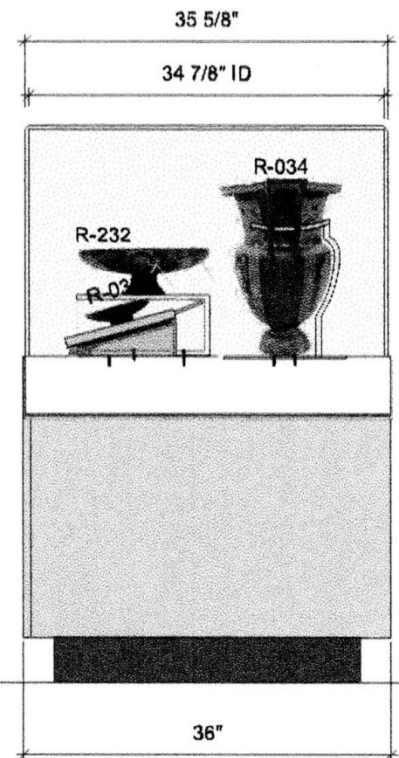
1 TOP VIEW  
Scale: 1 1/2" = 1'-0"



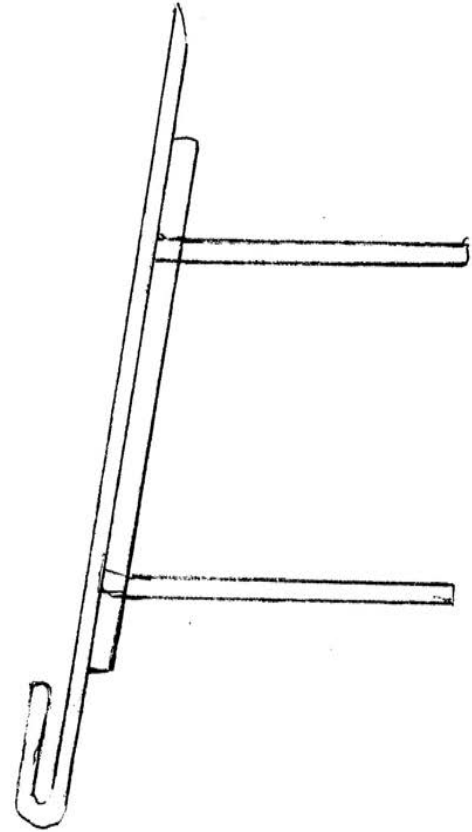
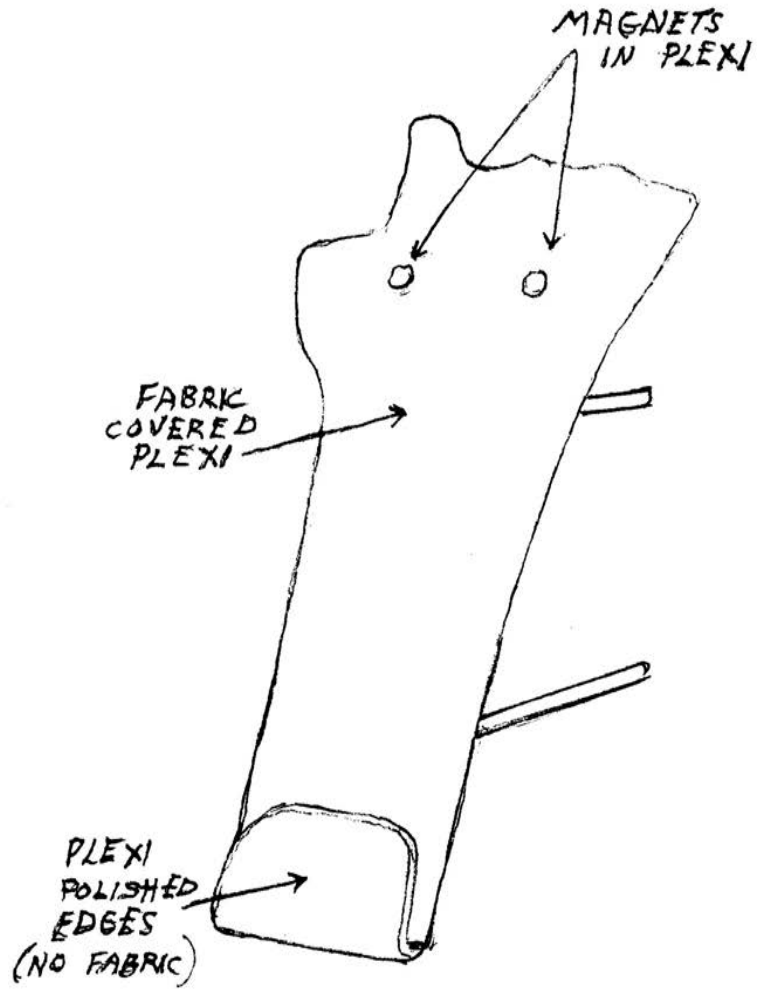
EXHIBITION PLAN

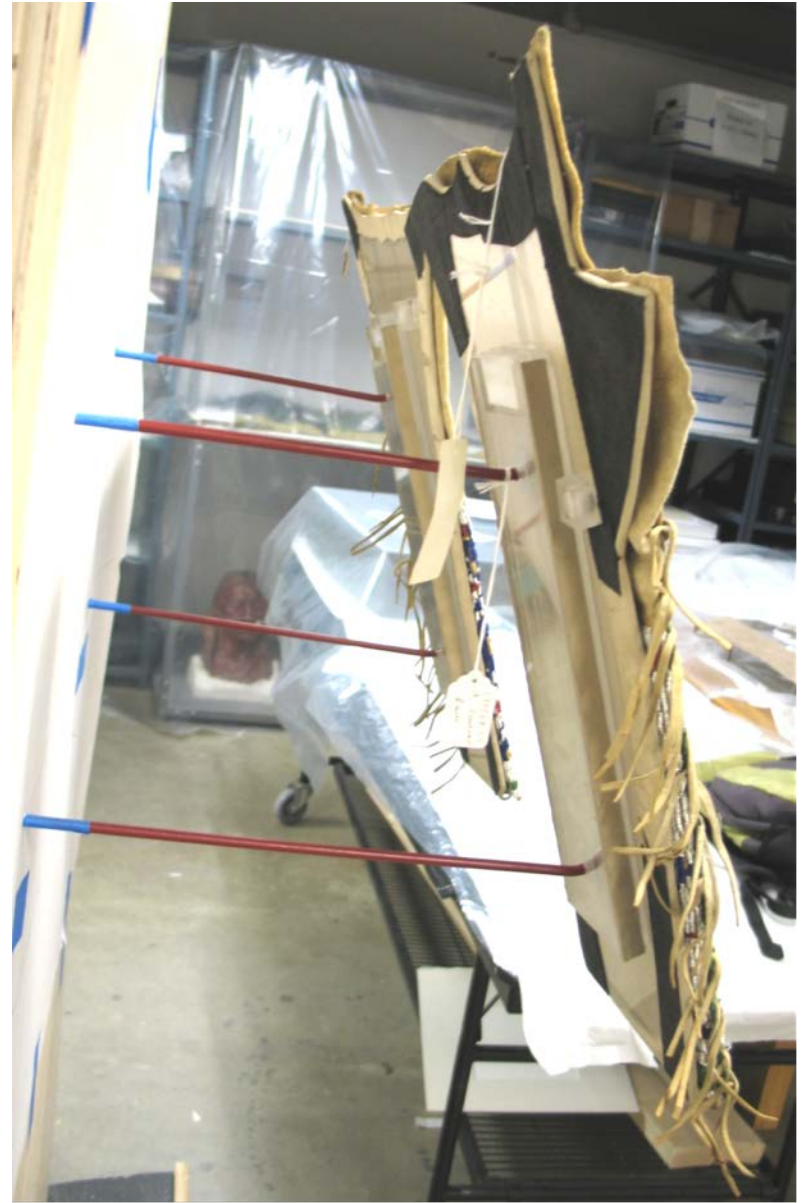


2 FRONT VIEW  
Scale: 1 1/2" = 1'-0"



3 SIDE VIEW  
Scale: 1 1/2" = 1'-0"

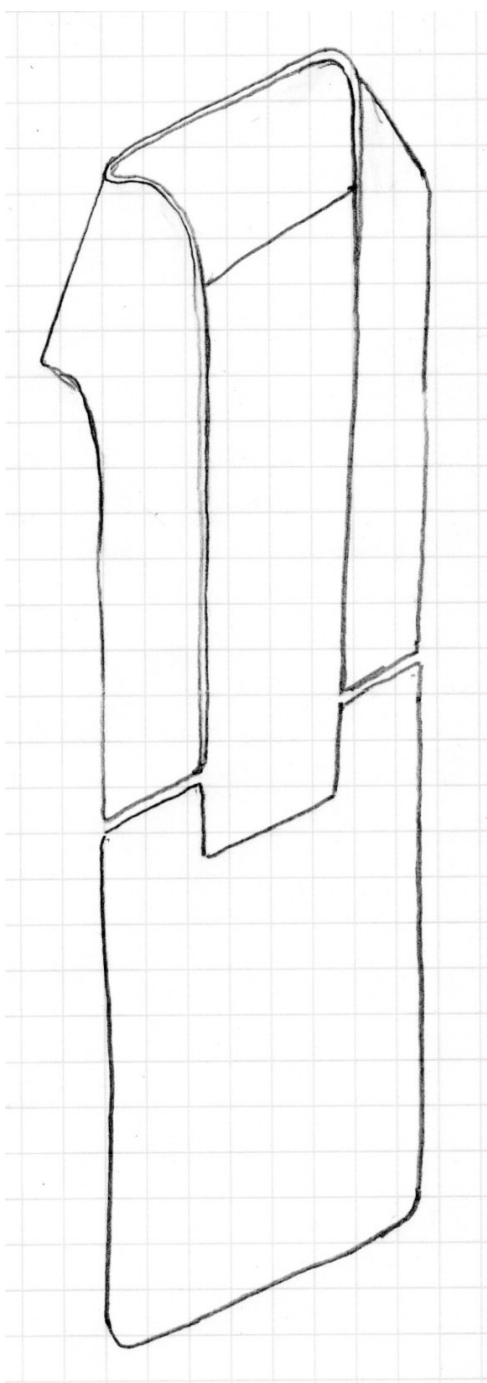














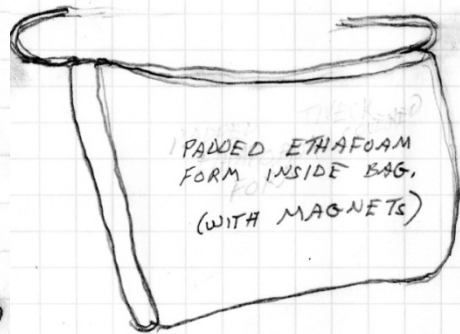
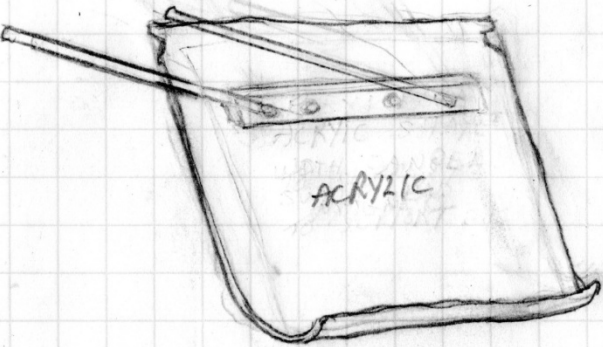
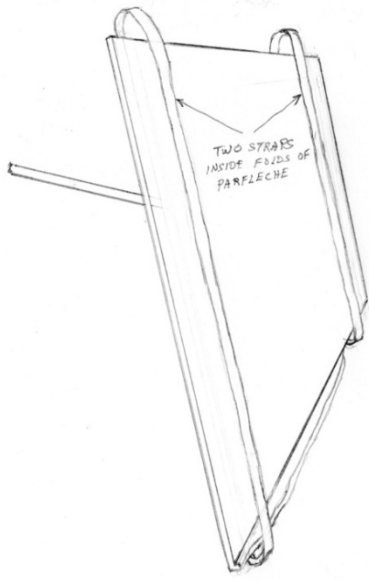








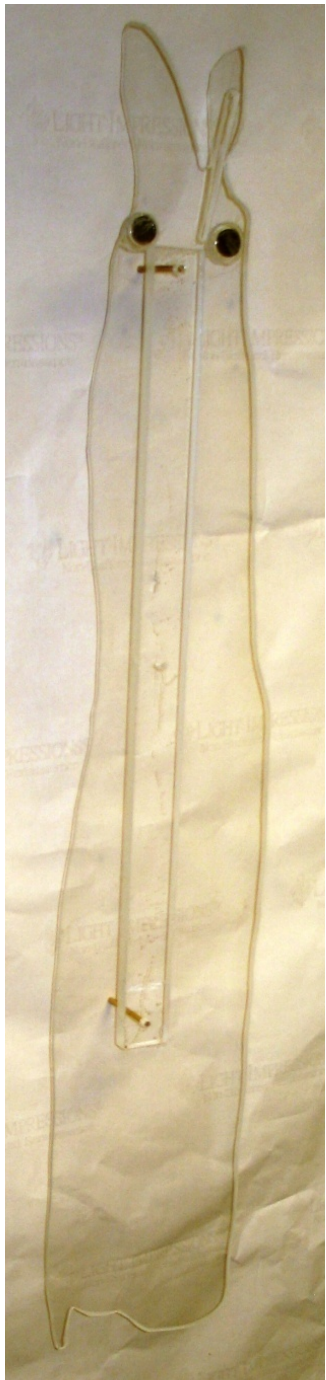








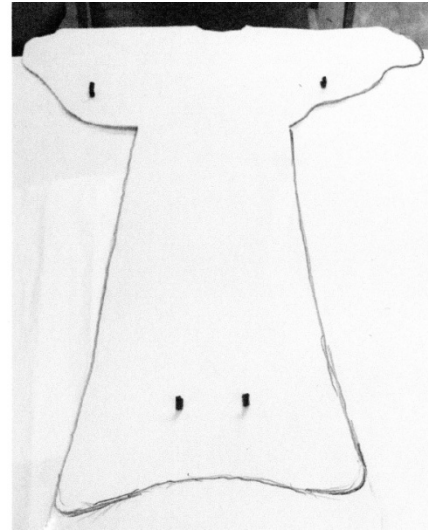




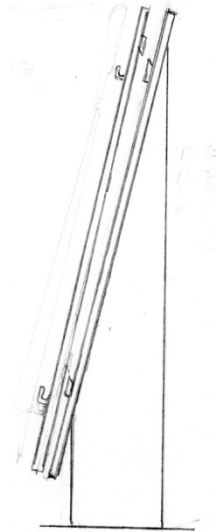




Inside dress



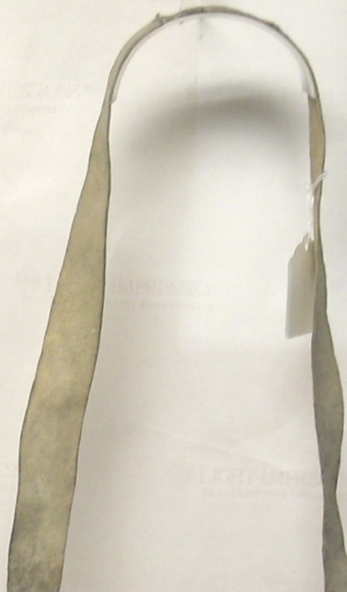
Behind dress



Support Pedestal









**Crepeline**  
100% silk, 54" wide



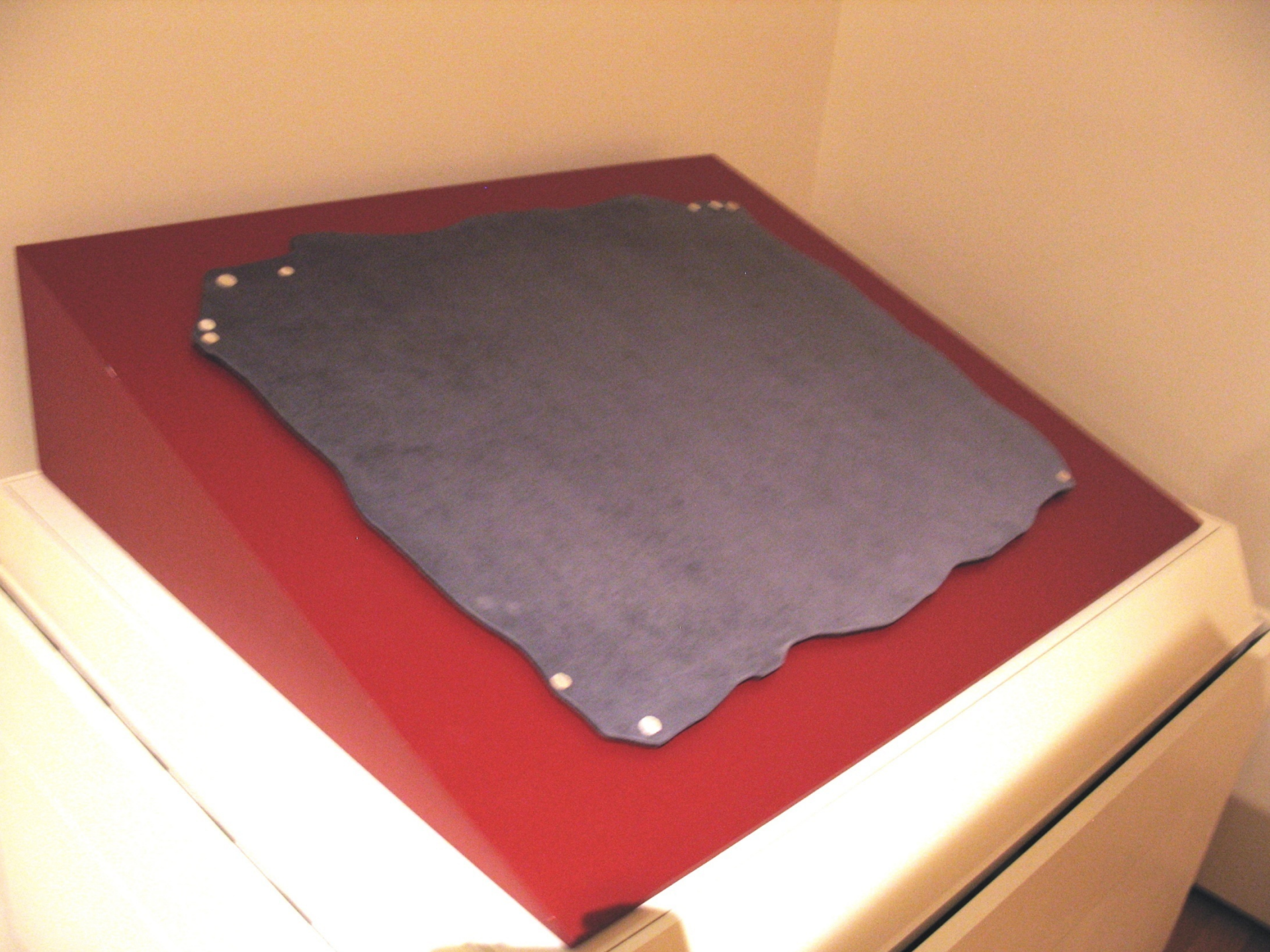




Small informational cards are placed on the base of the display case, providing details about the artifacts shown.













I would like to thank the staff of the Speed Art Museum who were so helpful while I was in Louisville, and a special thanks to:

Kim Spence, Curator of Prints, Drawings and Photographs

Scott Erbes, Curator of Decorative Arts

Ron Davey, Head Preparator

Mike Stauss, Preparator

Matt Eggswart, Preparator