

Indianapolis Museum of Art – Material Analysis Sheet

Material:

Ultrasuede (washed)

Polyethylene terephthalate



Oddy:

Pass to Temporary

N = 3; measured 3/2016 to 7/2016



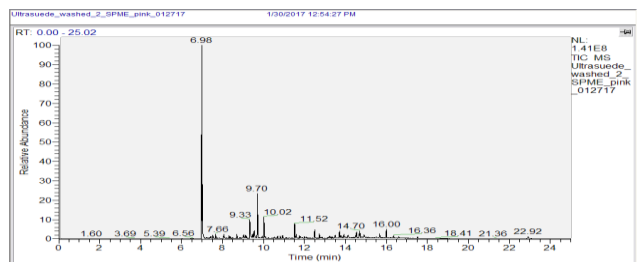
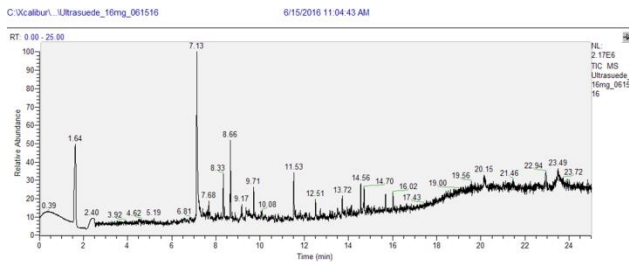
Notes: Some slight yellowing on lead coupon.

Evolved-Gas Analysis:

EGA reveals the presence of dibutylamine at 7.11, 1-undecanol at 11.52, 7,9-di-tert-butyl-1-oxaspiro[4,5]deca-6,9-diene-2,8-dione at 16.02, other peaks either did not have a good match, or were attributed to column bleed.

SPME Analysis:

SPME shows dibutylamine at 6.98, a-hydroxyethyl phenyl ether at 9.33, N-nitroso-dibutylamine at 9.70, dibutylformamide at 10.02, n-tridecanol at 11.52 and 12.50, and oxa-spiro[4,5]deca-6,9-diene-2,8-dione, 7,9-di-tert-butyl- at 16.00.



Microchemical Tests:

Azide: **P**

Chromatropic Acid: **F-S**

Iodide/Iodate: **P**