

Metropolitan Museum of Art
Gas Chromatography- Mass Spectrometry (GC-MS) Results from Material Analysis

This document includes (1) a mass spectrum and (2) the volatile organic compounds (VOCs) emitted from samples using GC-MS analysis. The data is not interpreted; however, several classes of chemicals are highlighted because they are potential risks for artwork in an enclosed environment. A basic key, provided below, indicates those classes. The amount of each chemical identified has not been determined; similarly, it is not known how much of each chemical is necessary to do damage to art. Finally, peaks may be present that are the result of the sample adsorbing chemicals from the air and reemitting them during testing rather than being inherent to the sample. Research is ongoing to determine specifically which chemicals and amounts are required to negatively affect artifacts.

Highlighted data:

Pink – chemicals currently known to be hazardous to art

Green – amines; can raise the pH, are suspected to react with acids and may form crystals in an enclosed environment

Yellow – chemicals of the following type, which *may* be hazardous to art:

Acids – lower the pH, corrosive to metals, degrade organic materials

Aldehydes – can convert to acids with heat or exposure to UV light

Esters – can hydrolyze into acids with heat and humidity

Sulfur-containing compounds – known to tarnish and corrode some metals

Halogenated compounds – can become reactive with exposure to heat and UV light

Nitrogen-containing, not amine – can react with other off-gassed chemicals

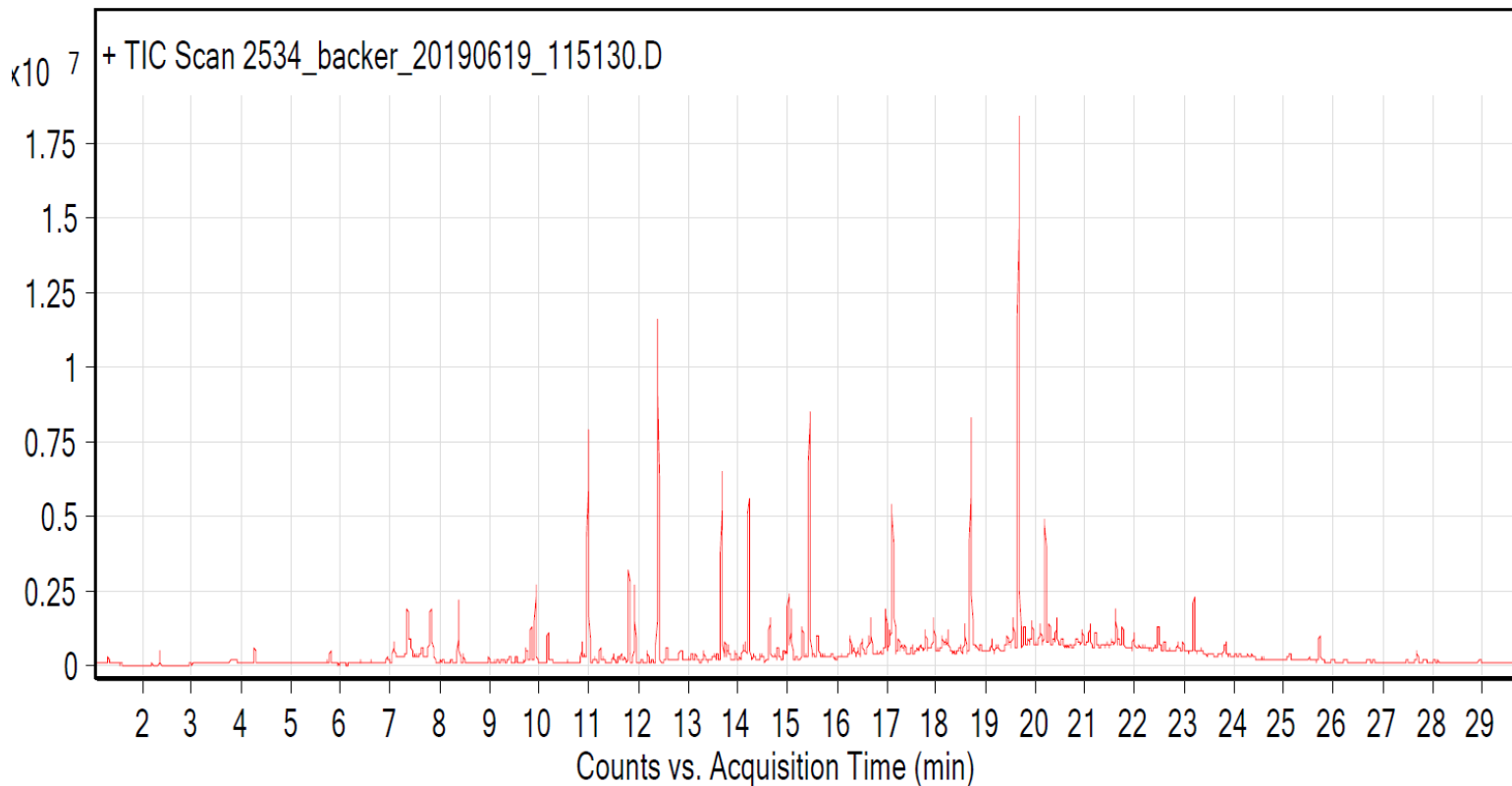
Alkynes – can become reactive when exposed to heat or UV light

Sample: University Products backer rod trapezoid polyethylene

Date collected: 6/19/2019

Oddy test result: temporary

Technique used: SPME with a PDMS/DVB fiber; Agilent 7890B GC and 5977B MS fitted with a GL Sciences OPTIC-4 multimode inlet and LEAP PAL RTC autosampler; Pre-heated at 60°C for 20 minutes; fiber exposure at 60°C for 20 minutes; sample injected into 220°C inlet and cotrapped for 2 min at -15°C; GC ramped from 35°C to 225 °C at 7.5°C/min. Data analyzed in Masshunter Qualitative. Samples > 90% match with a NIST 17.0 library are reported. VOCs not highlighted are because they were also observed in blanks: (1) 15.0 min: 2-methyl-, 3-hydroxyl-, 2,4,4-trimethylpentyl ester propanoic acid



Compound Table

RT	Score (Lib)	Area	Name
7.78	94.13	925131	Tridecane
7.81	90.82	2389765	Cyclotetrasiloxane, octamethyl-
9.84	96.32	2162279	Pentadecane
9.93	97.55	4569830	Nonanal
10.86	91.2	1154358	Acetic acid, 2-ethylhexyl ester
10.98	90.57	14000554	Cyclopentasiloxane, decamethyl-
11.81	94.28	5448456	Undecane, 4,7-dimethyl-
11.92	97.9	4612404	Decanal
12.39	96.78	21454888	2-Ethylhexyl acrylate
13.68	94.73	12055835	Undecane, 4,7-dimethyl-
15.02	94.41	4326075	Propanoic acid, 2-methyl-, 3-hydroxy-2,4,4-trimethylpentyl ester
15.08	95.02	3318849	2-Propenoic acid, 1,7,7-trimethylbicyclo[2.2.1]hept-2-yl ester, exo-
15.31	94.54	1893084	1-Tridecanol
15.45	94.37	15765195	Heptadecane
16.99	94.01	3024983	Cetene
17.11	94.78	10076831	Tetradecane
18.58	94.04	1771908	1-Octadecanol
18.7	94.86	16836061	Nonadecane
20.19	95.27	8704930	Nonadecane
21.62	91.99	2327367	Eicosane
22.47	90.86	1599477	1-Heptadecanol