

Indianapolis Museum of Art – Material Analysis Sheet

Material:

PUR (ester) Foam

Polyester urethane resin



Oddy:

Fail

N = 3; measured 3/2016 to 7/2016

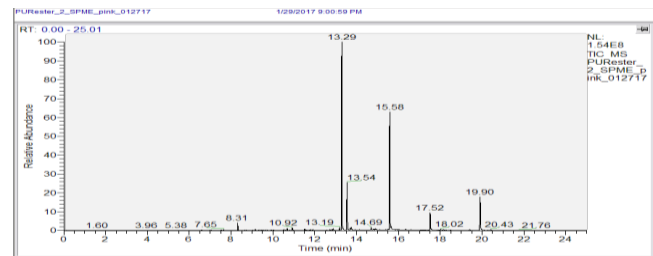
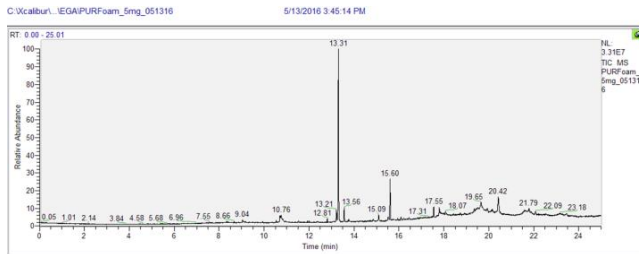


Evolved-Gas Analysis:

EGA reveals the presence of a cyclic dimer at 13.31, and alkylic morphaline ranging from 13-18.

SPME Analysis:

SPME shows nonanal at 8.31, cyclic dimer at 13.29, alkylic morphaline ranging from 13.54 to 18, and trist(1,3-dichloroisopropyl)phosphate at 19.90



Microchemical Tests:

Azide: **P**

Chromatropic Acid: **P**

Iodide/Iodate: **P**