

Indianapolis Museum of Art – Material Analysis Sheet

Material:

Ultrasuede (unwashed)

Polyethylene terephthalate



Oddy:

Pass to Temporary

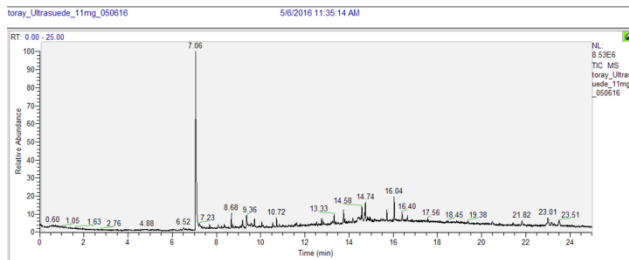
N = 3; measured 3/2016 to 7/2016



Notes: Some slight discoloration on the lead coupon

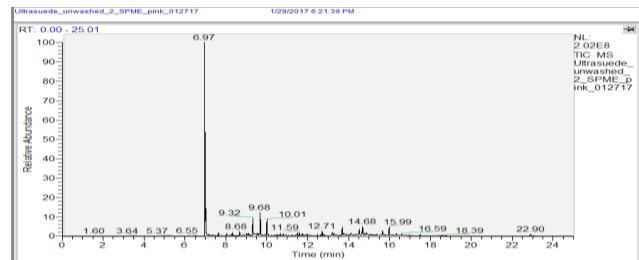
Evolved-Gas Analysis:

EGA reveals the presence of dibutylamine at 7.11, 7,9-di-tert-butyl-1-oxasoirol(4,5)deca-6,9-diene-2,8-dione at 16.04, and diesterphthalate, a possible plasticizer at 16.39



SPME Analysis:

SPME shows dibutylamine at 6.97, a-hydroxyethyl phenyl ether at 9.32, N-nitroso-dibutylamine at 9.68, and dibutylformamide at 10.01, and hydrocarbons around 14.68.



Microchemical Tests:

Azide: **P**

Chromatropic Acid: **F-M**

Iodide/Iodate: **P**