

# Indianapolis Museum of Art – Material Analysis Sheet

Material:

Komatex (Kommerling)

Polyvinyl chloride



Oddly:

Pass to Temporary

N = 3; measured 3/2016 to 7/2016



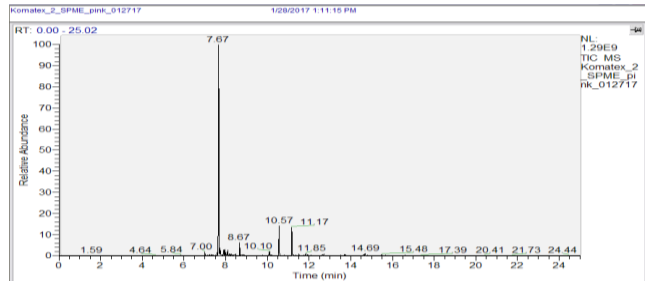
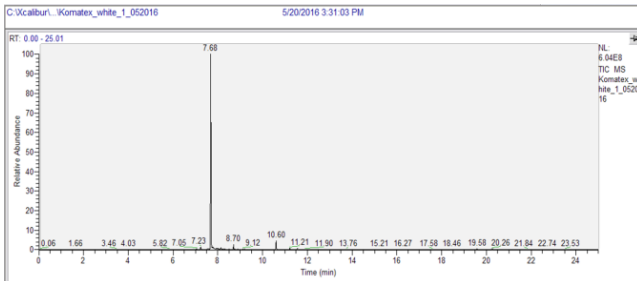
Notes: Slight haziness on lead coupon

**Evolved-Gas Analysis:**

EGA reveals the presence of methyl methacrylate at 4.03, 2-ethylhexanol at 7.67, 2-ethylhexanol acetate at 8.69, 4-chlorooctane 10.10.6, 2-ethylhexyl thioglycolate at 11.19, and 1-chloroundecane at 11.56

**SPME Analysis:**

SPME showed ethylhexanol at 7.67, 2-ethyl-1-hexanol acetate at 8.67, 4-chlorooctane at 10.57, and 2-ethylhexyl thioglycolate at 11.17



Microchemical Tests:

Azide: **P**

Chromatropic Acid: **P**

Iodide/Iodate: **P**