

# THE ADOPTION OF A MUSEUM SYSTEM DEVELOPED AND REAPPLICATED IN MUSEUMS IN THE STATE OF SANTA CATARINA, SOUTHERN BRAZIL



JULES MARCELO ROSA SOTO - GENERAL COORDINATOR  
 GERSON CARLOS ROCHA - ASSISTANT CURATOR  
 BIBIANA DA CONCEIÇÃO LESSA - ASSISTANT CURATOR  
 ALBERTO LUCIANO FRONZA - COORDINATOR OF MUSEOGRAPHY  
 RÔMULO PORTHOS CARTA MAIO - COMUNICACION



## LUMINOTECHNIC:

- Energy supply with suspended electroducts;
- Lightning design with LED spotlights with 3W and color temperature of 3000K;
- Activated by presence sensors;
- Installed from inside the exhibitors to reduce reflections;
- Completely canceling natural lights.

## CLIMATIZATION:

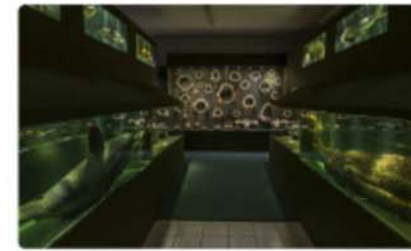
- Rooms with individual splits and insufflators, that lead to drastically reduce energy consumption;
- Exhaust system installed inside the aquariums modules to reduce relative humidity;

## CHARACTERISTICS OF MUSEOGRAPHIC PROPOSAL:

- Smallest intervention in the constructed structure;
- Continuous and sinuous flow which distributes the visitors along the circuit
- Expository sections defined by colors

## SUSTAINABLE CHOICES:

- Low energy consumption
- Recyclable materials (PET- Polyethylene Terephthalate) and MDF ( Medium Density Fiberboard);
- Lightweight materials with characteristics of thermal and acoustic isolation.
- Reuse of glass slabs;
- Low maintenance, water use reduced with less cleaning products;



The Univali Oceanographic Museum (MOVI) has one of the most expressive marine biological collections in Latin America. In september 2008 MOVI changed its instalations to Balneário Piçarras. In its own building MOVI accommodated the rooms collections, administration, laboratories, auditorium, technical rooms, classrooms. In December 2015, has opened its exhibition.

The building originally constructed for classrooms, needed adaptions and imposed limitations that are described here.

The first limitation were the load limit of the slabs (300 kg/m<sup>2</sup>), for this all project was designed considering these in the layout and orientation of the exhibitors.



## SUCCESSFUL POINTS OF THE EXHIBITION:

- Low financial and environmental cost;
  - Rapid modification, easy modeling and construction;
  - International high availability of materials;
- These factors allowed the team to use the same construction standard in the Naval Museum of the Cultural Naval Museum of the Cultural Center of The Navy in Santa Catarina (Florianópolis), the Museum of Image and Sound of Balneário Camboriú, the historical Museum of Porto Belo and The Sea Station Museum.

The final result is highly praised by the visitors, who approved the continuous flow, with organic lines, providing a pleasant and unpredictable aesthetic effect provoking the curiosity of the visitor who does not know what will find after the next turn, invited by the activation of the lights, taking him to discoveries from the beginning to the end of the exhibition.

## The Univali Oceanographic Museum (MOVI)

