

# Indianapolis Museum of Art – Material Analysis Sheet

## Material:

ULINE Hot Melt Adhesive,  
Heavy Duty

Isobutylene/butane copolymer



## Oddy:

Temporary to Fail

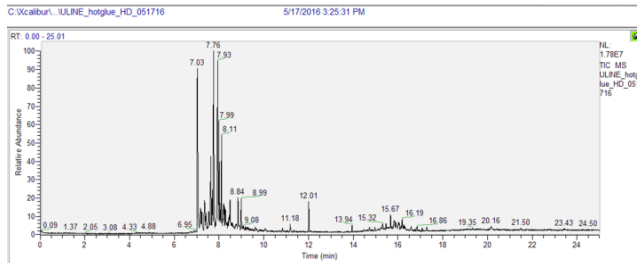
N = 3; measured 3/2016 to 7/2016



Notes: Some white crystallization on lead coupon

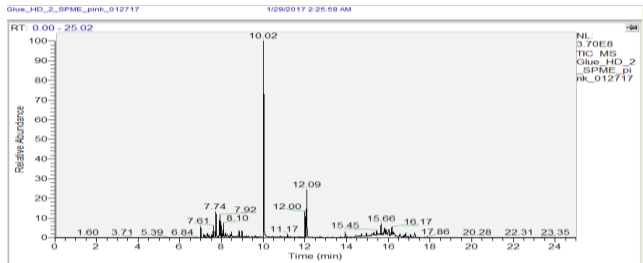
## Evolved-Gas Analysis:

EGA reveals the presence of dibutylamine at 7.03, hydrocarbons from 7-9, BHT at 12.01, and Kaurene, podocarapenones or tree resins at 15.67



## SPME Analysis:

SPME shows hydrocarbons around 7, dibutylformamide at 10.02, butylated hydroxytoluene at 12.00, 4,4,5,6-tetramethyltetrahydro-1,3-oxazin-2-thione at 12.09, and high molecular weight hydrocarbons from 15 to 17.



## Microchemical Tests:

Azide: **F**

Chromatropic Acid: **P**

Iodide/Iodate: **P**