

Indianapolis Museum of Art – Material Analysis Sheet

Material:

RTV162 Silicone Caulk

silicone polydimethylsiloxane polymer



Oddy:

Fail

N = 3; measured 3/2016 to 7/2016



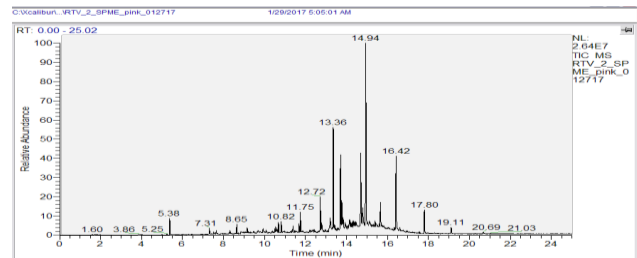
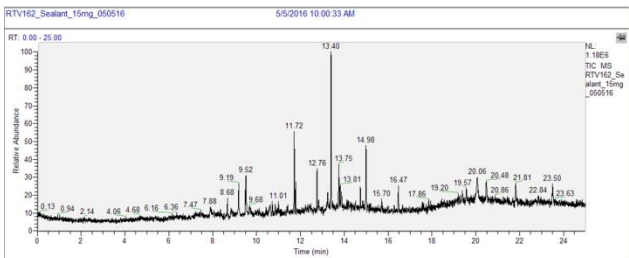
Notes: Black discoloration on copper, and white discoloration on lead coupon.

Evolved-Gas Analysis:

EGA reveals the presence of siloxane at 9.19, 11.72, 13.4, 14.99, and 16.47. Hydrocarbons are present at 12.76 and 13.75, and 2,4-diethyl-6-methyl-1,3,5-trioxane at 9.52

SPME Analysis:

SPME shows presence of siloxane derivatives at 5.38, 7.31, and 8.65, 13.36, 14.94, 16.42, and 17.80. Peaks at 11.75 and 12.72 result from hydrocarbons.



Microchemical Tests:

Azide: **P**

Chromatropic Acid: **P**

Iodide/Iodate: **P**