

Indianapolis Museum of Art – Material Analysis Sheet

Material:

Upholstery Fabric (Unwashed)

Polyethylene terephthalate



Oddy:

Temporary to Fail

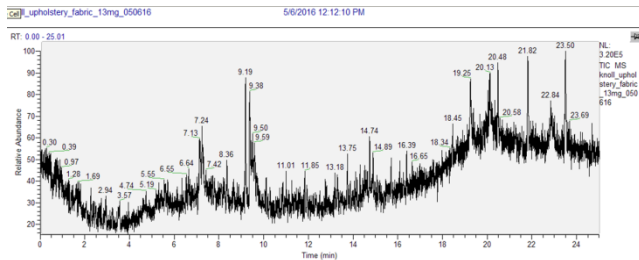
N = 3; measured 3/2016 to 7/2016



Notes: Fine crystals were found to be beginning to form on Lead coupon.

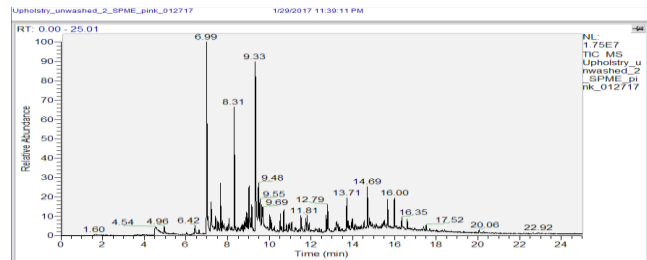
Evolved-Gas Analysis:

EGA reveals the presence of 2-phenoxyethanol at 9.38



SPME Analysis:

SPME shows dibutylamine at 6.992-propyl-1-pentanol at 7.65, nonanal at 8.31, a-hydroxyethyl phenyl ether at 9.33, propanoic acid derivatives at 10.69 and 12.79, and hydrocarbons from 13-17.



Microchemical Tests:

Azide: **P**

Chromatropic Acid: **P**

Iodide/Iodate: **P**