



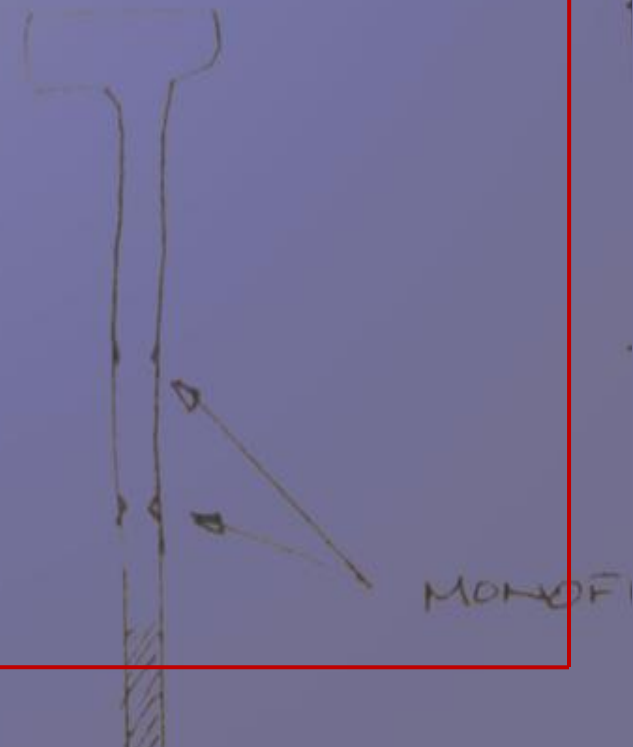
Concealing Object Mounts



▣ McKenzie Lowry J. Paul Getty Museum



Advance Work





Nuts and Bolts

Methods

Machining

Welding/Brazing

Casting

Painting

Isolation

Materials

Strength / Stiffness

Adaptability

Elastic Modulus of Materials

Material	E (lb-in ² x 10 ⁶)
Acrylic	3.2
Aluminum	10.2
Brass (leaded)	12
Brass (unleaded)	15
Stainless Steel	27.6
Carbon Steel	29

MONOF



Visible

Discrete

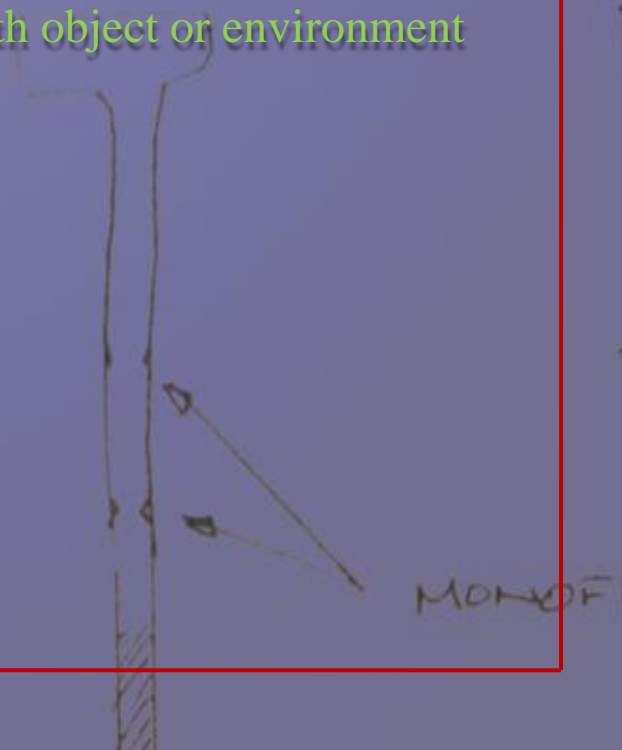
Economy of material



Concealed

Invisible

Integrated with object or environment



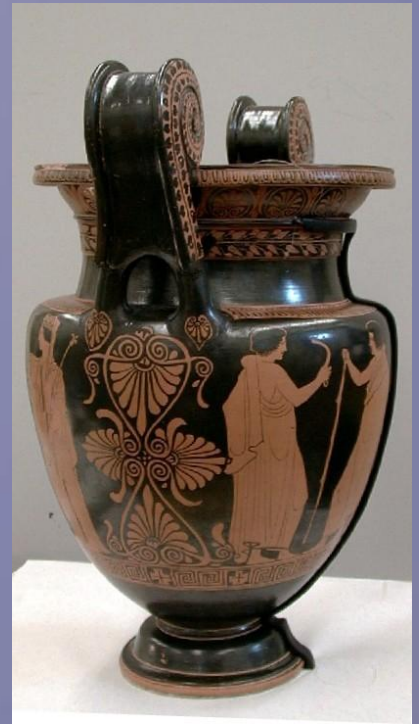
Visible Mounts

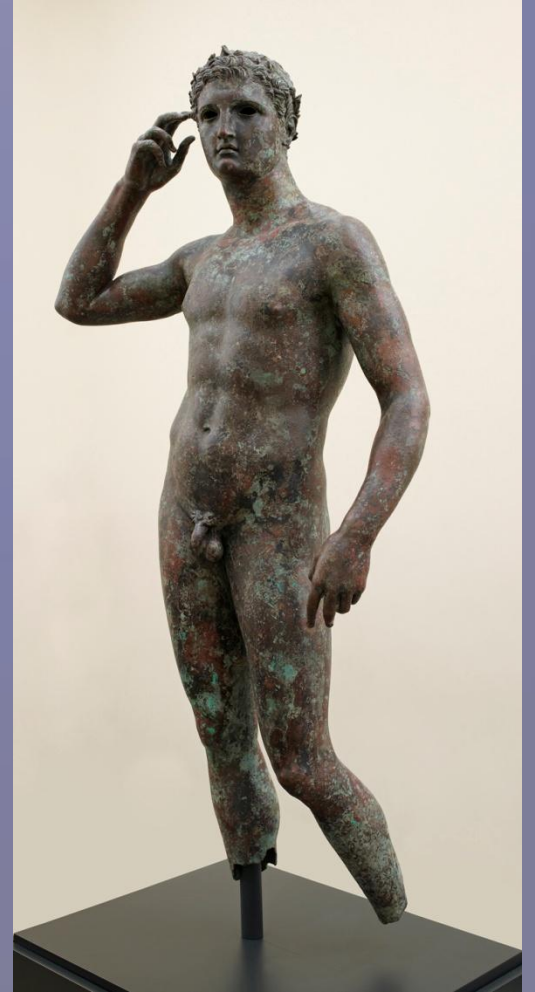


Materials

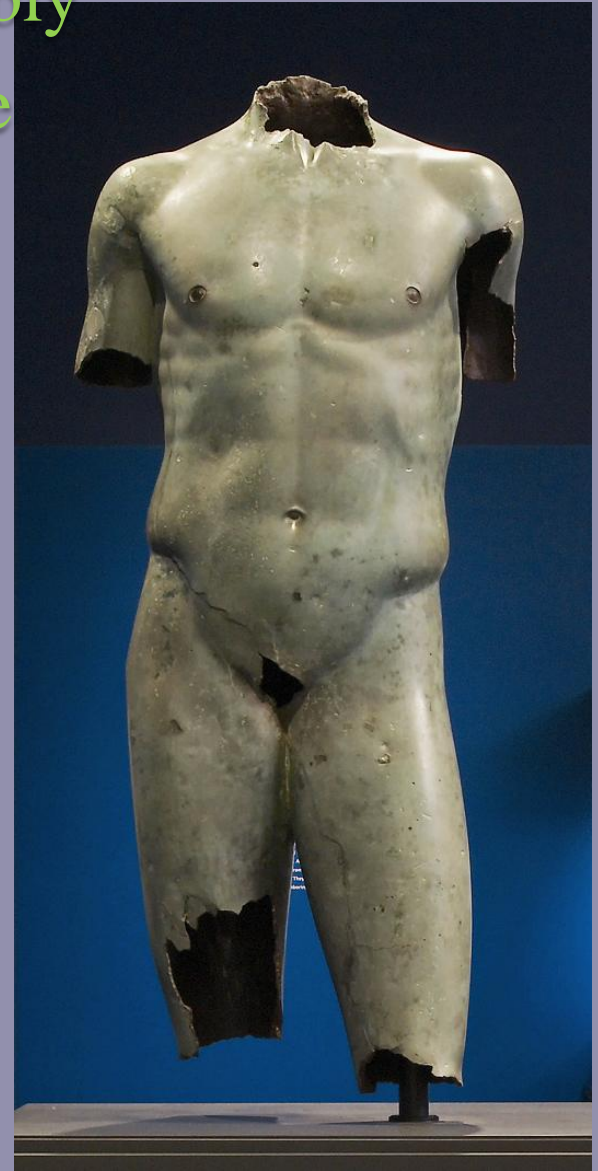
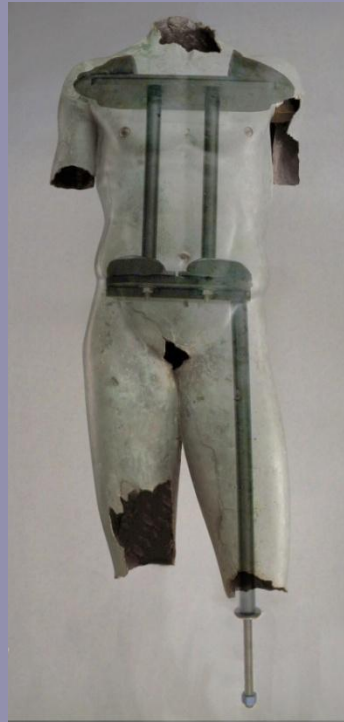


Materials: Acrylic/Steel





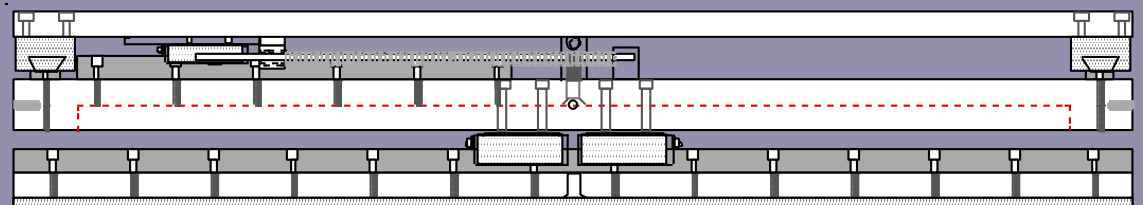
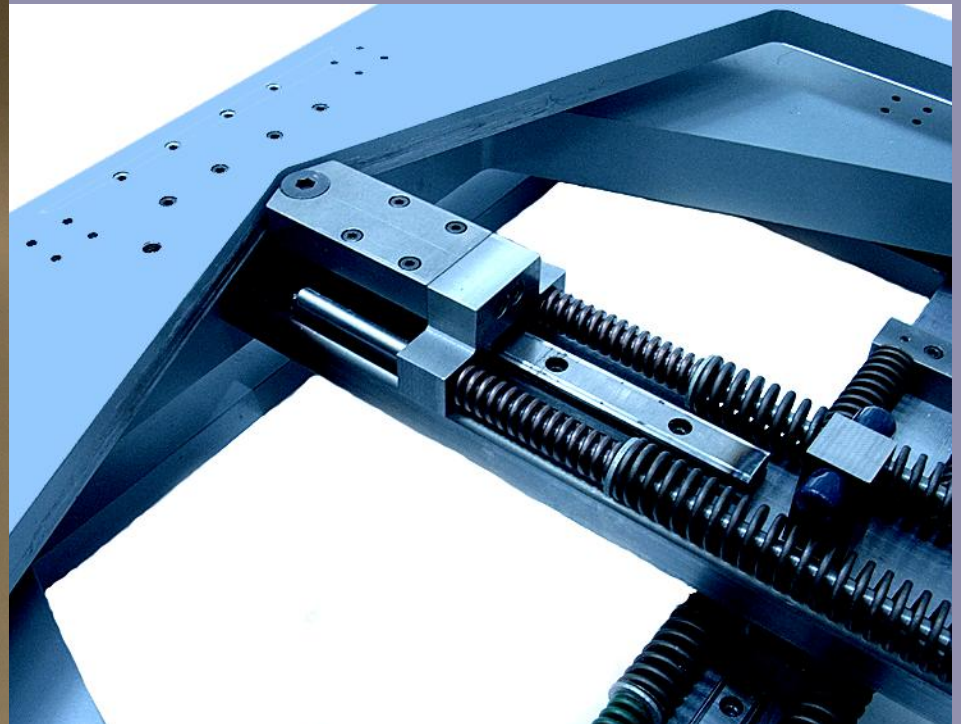
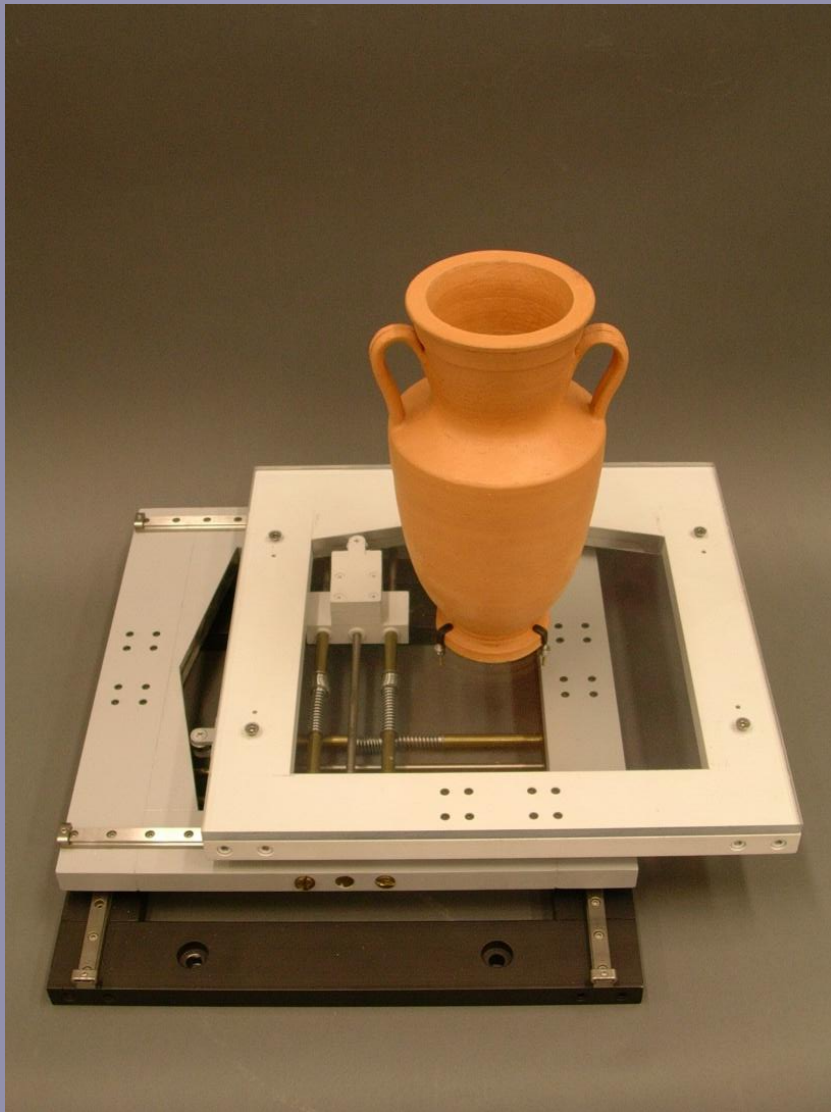
Interlocking Assembly Compression tube



Faux Finishing

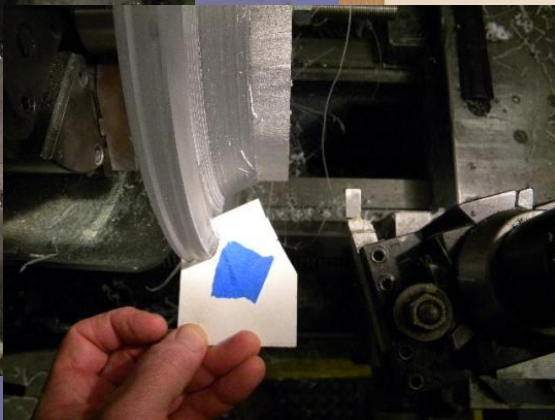
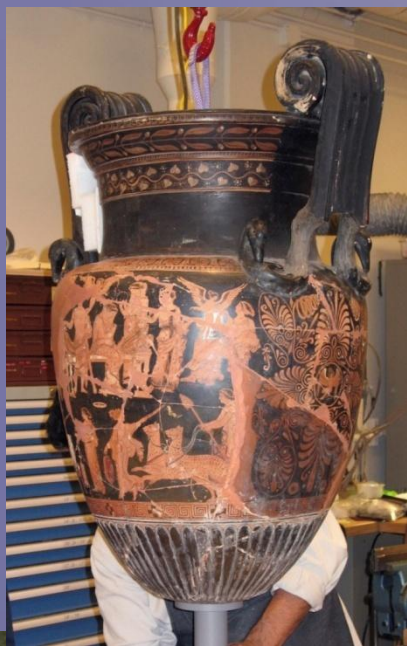


Isolation

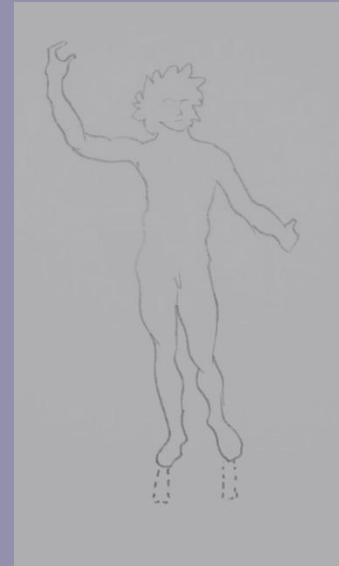




Concealed Mounts

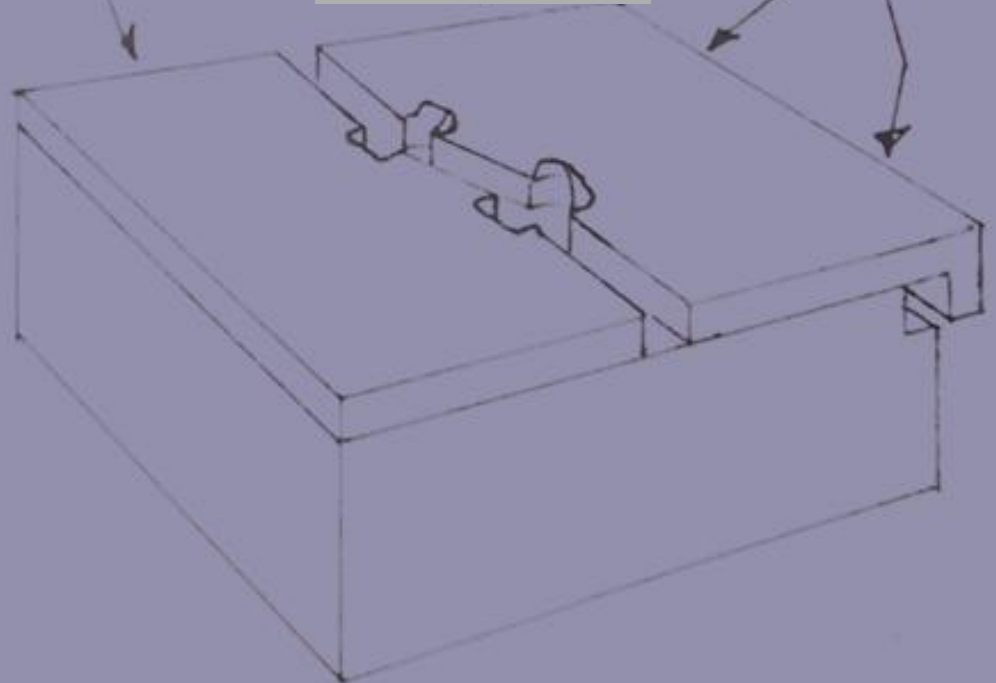


Design: Furniture



Part A

8-32 SCREWS

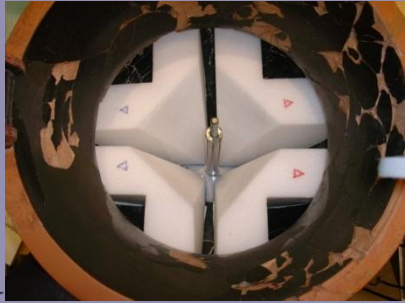


Embedded Compression



1614

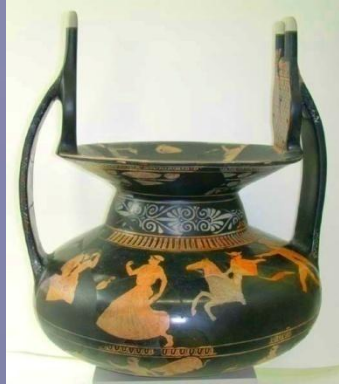
Internal Mounts



22 1/2"



Drilling Objects



Interlocking Assemblies





Thank You



McKenzie Lowry

J. Paul Getty Museum