

# Indianapolis Museum of Art – Material Analysis Sheet

Material:

Fuhr Sealant

Oddy:

Pass to Temporary

N = 3; measured 3/2016 to 7/2016

Co-polymer



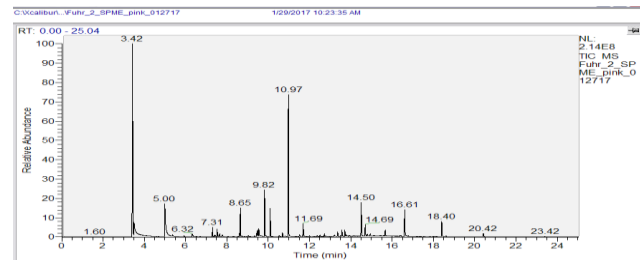
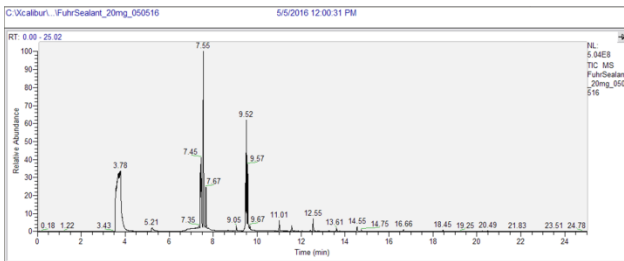
Notes: Some reddish discoloration on the copper coupon

### Evolved-Gas Analysis:

EGA reveals the presence of trimethylamine at 3.78, morpholine at 5.21, dipropylene glycol monomethyl ether at 7.42, 1-(2-methoxypropoxy)-2-propanol at 7.55, tri(1,2-propyleneglycol)-monomethyl ether at 7.67, propylene glycols at 9.5, 1-phenoxypropan-2-ol at 9.57, 2,4,7,9-tetramethyl-5-decyne-4,7-diol at 11.01, succinic acid at 11.57, di(sec-butyl)-2-methylsuccinate at 12.55, and adipic acid at 13.6

### SPME Analysis:

SPME shows nitric oxide at 3.42, morpholine at 5.00, 2,4,7,9-tetramethyl-5-decyne-4,7-diol at 10.97, and hydrocarbons from 14 to 18.



Microchemical Tests:

Azide: **P**

Chromatropic Acid: **P**

Iodide/Iodate: **P**