

Indianapolis Museum of Art – Material Analysis Sheet

Material:

Sintra (3A)

Part Number: XXXX

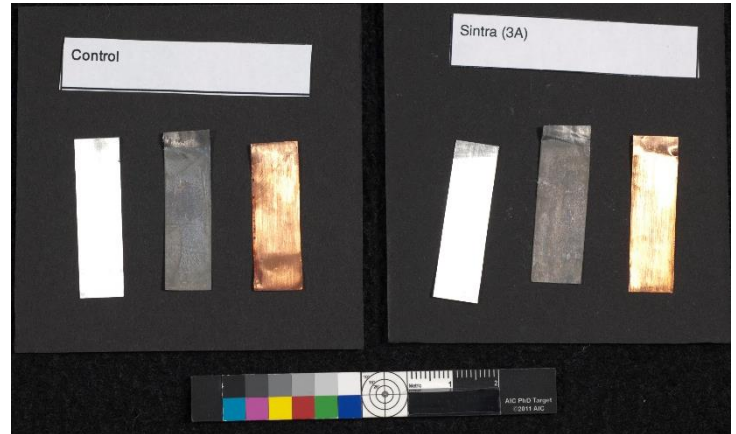
Polyvinyl chloride



Oddy:

Fail

N = 3; measured 3/2016 to 7/2016



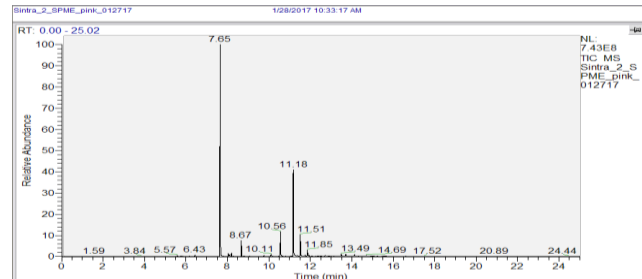
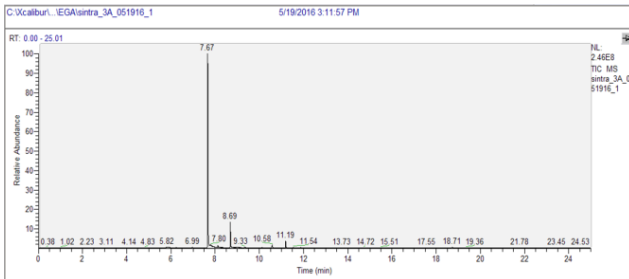
Notes: Copper is very dark colored on end of coupon.

Evolved-Gas Analysis:

EGA reveals the presence of 2-ethylhexanol at 7.67 and 8.69, as well as 2-ethylhexyl thioglycolate at 11.19

SPME Analysis:

SPME show presence of ethylhexanol at 7.65, 2-ethyl-1-hexanol acetate at 8.67, 4-chlorooctane at 10.56, 2-ethylhexyl thioglycolate at 11.18, and undecyl alcohol at 11.51



Microchemical Tests:

Azide: **P**

Chromatropic Acid: **P**

Iodide/Iodate: **P**