

Indianapolis Museum of Art – Material Analysis Sheet

Material:

Bentley Carbon Beach

Polypropylene/ polystyrene backing with nylon fiber



Oddly:

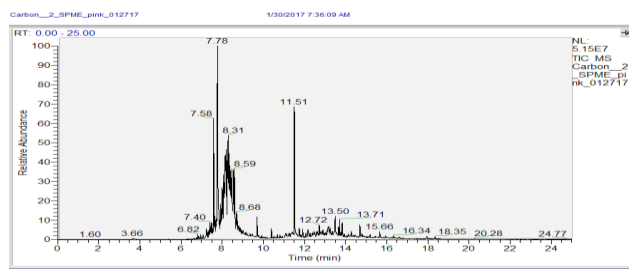
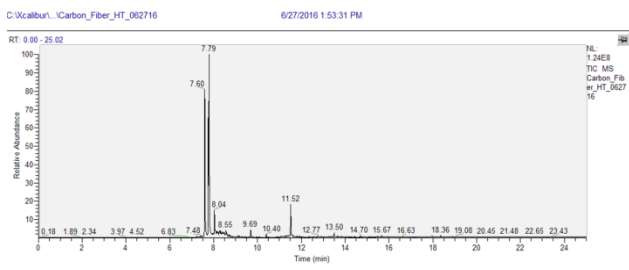
Pass to Temporary
N = 3; measured 3/2016 to 7/2016



Notes: Some crystals beginning to form on top of lead coupon.

Evolved-Gas Analysis:
EGA reveals the presence of 2-propanol, 1-1'-oxybis at 7.63, 1-propanol, 2-2'-oxybis t 7.82, hydrocarbons appearing around 8, 1-undecanol at 11.53, 42(2H)-Naphthalenemethanol, octryhydro at 13.68, and Cycloiolongifolene, 8-9-deyhro-9-formyl at 13.85.

SPME Analysis:
SPME shows the presence of 1,1'-oxydi-2-propanol at 7.58, 2,2'-oxybis-1-propanol at 7.78, hydrocarbons appearing in a group around 8, decyl alcohol 9.69, 4-phenylcyclohexene at 10.40, n-tridecanol at 11.51, and hydrocarbons around 13.



Microchemical Tests:

Azide: **P**

Chromatropic Acid: **P**

Iodide/Iodate: **P**