

Indianapolis Museum of Art – Material Analysis Sheet

Material:

Tan Carpet

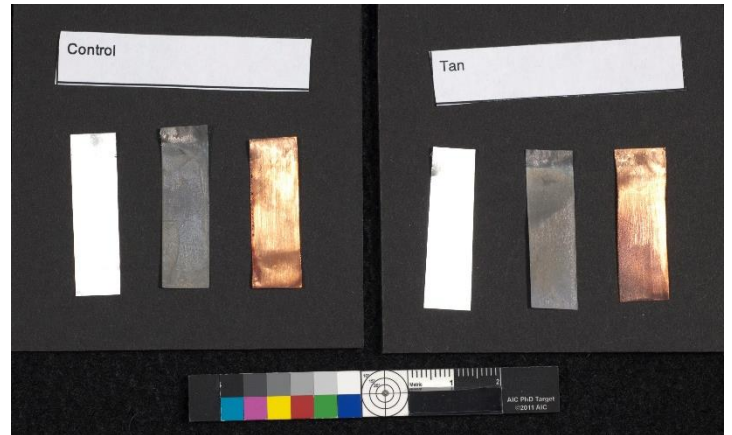
Polyethylene terephthalate



Oddy:

Temporary to Fail

N = 3; measured 3/2016 to 7/2016



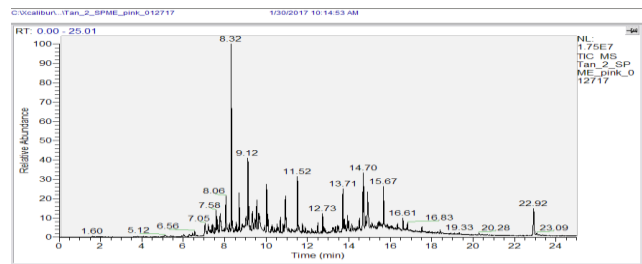
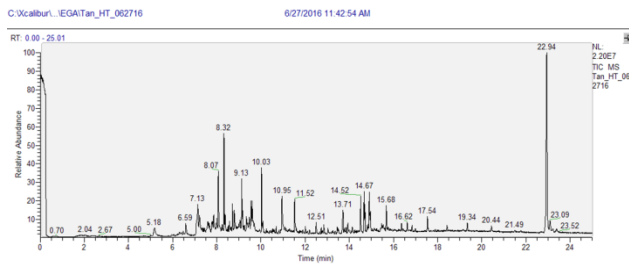
Notes: Some red discoloration on Copper coupon. Lead coupon showed fine crystals, and Silver seemed tarnished on bottom edge.

Evolved-Gas Analysis:

EGA reveals the presence of bumetrizole at 22.95, other peaks have been attributed to column bleed.

SPME Analysis:

SPME shows dibutylformamide at 10.02, and bumetrizole at 22.92. Other peaks show varying lengths of alcohols, ketones, and aldehydes.



Microchemical Tests:

Azide: **P**

Chromatropic Acid: **F-S**

Iodide/Iodate: **P**