

"WAKING THE BABY MAMMOTH" AIRS AT 9 PM ET/PT APRIL 26 ON NATIONAL GEOGRAPHIC CHANNEL

POSTER

NATIONALGEOGRAPHIC.COM/MAGAZINE | MAY 2009

THE NEW
ARCTIC
OCEAN

NATIONAL GEOGRAPHIC



Ice Baby

SECRETS OF A FROZEN MAMMOTH

SHOULD WE CLONE EXTINCT ANIMALS? 62 • SEARCHING FOR SHANGRI-LA 56
GREEN ROOFS 84 • ARCTIC LANDGRAB 104 • THE WORLD'S TOUGHEST TURTLES 122



MAMMOTHS
AND MASTODONS
TITANS OF THE ICE AGE









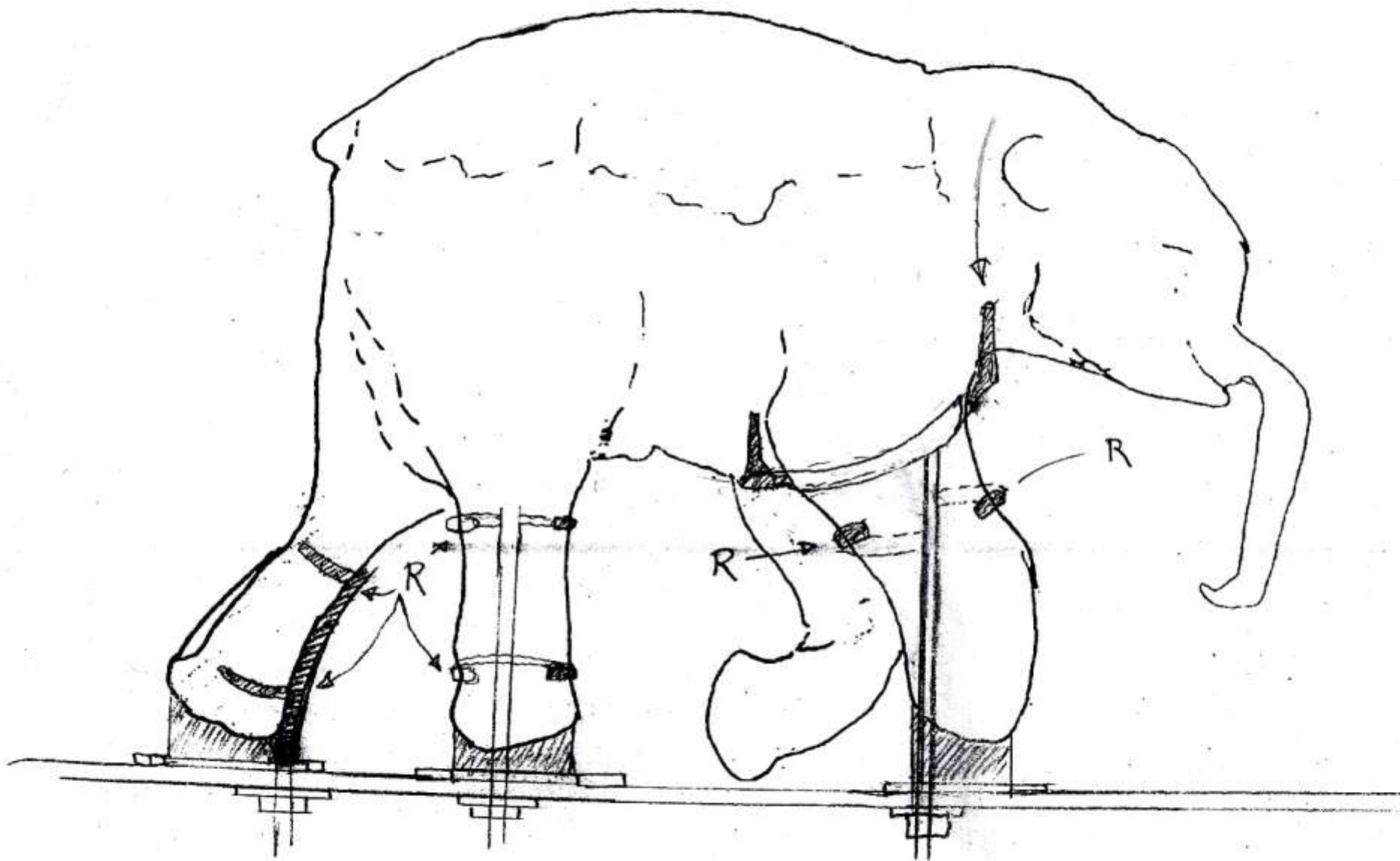


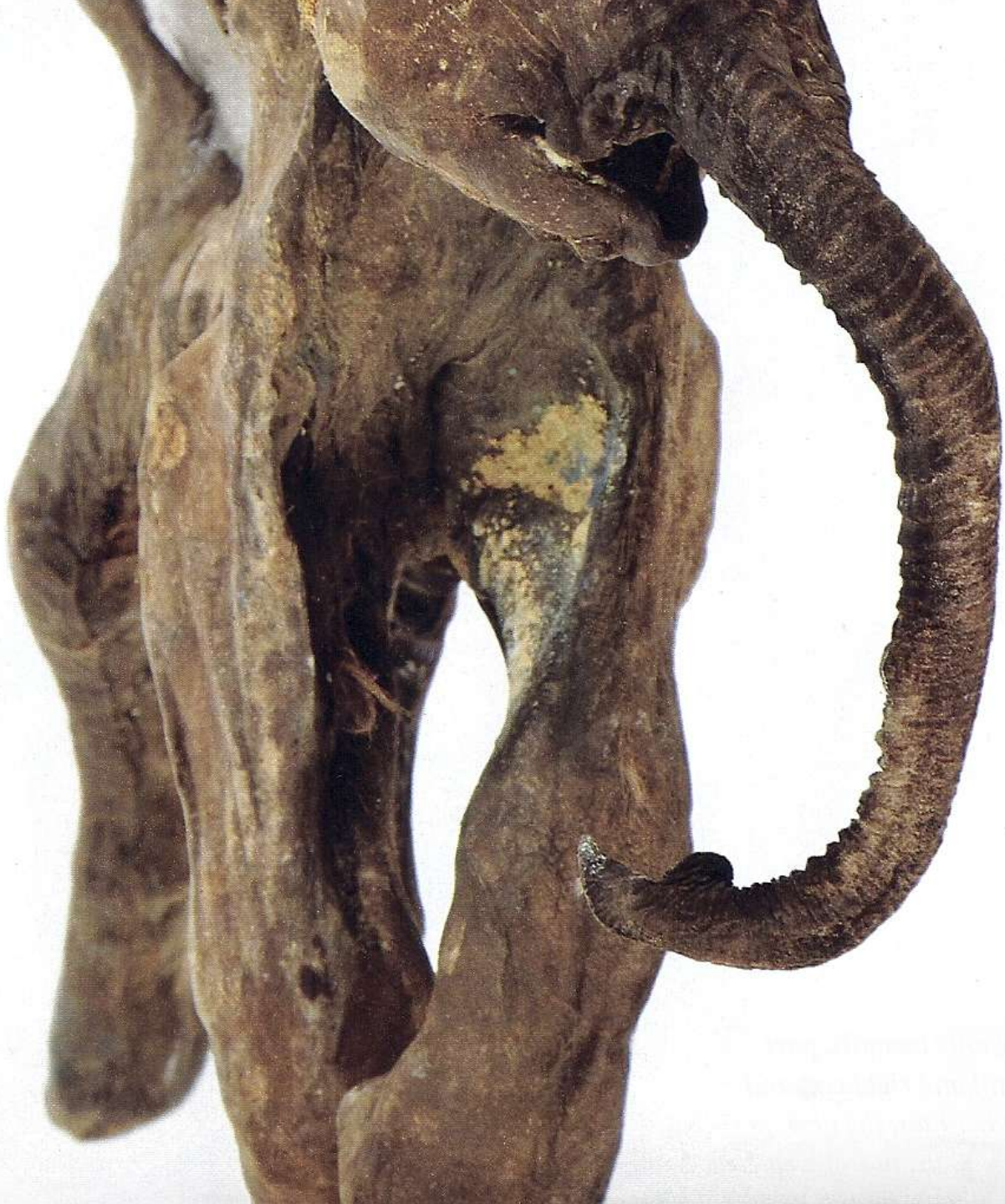
SAFEAIR VAV

HAMILTON

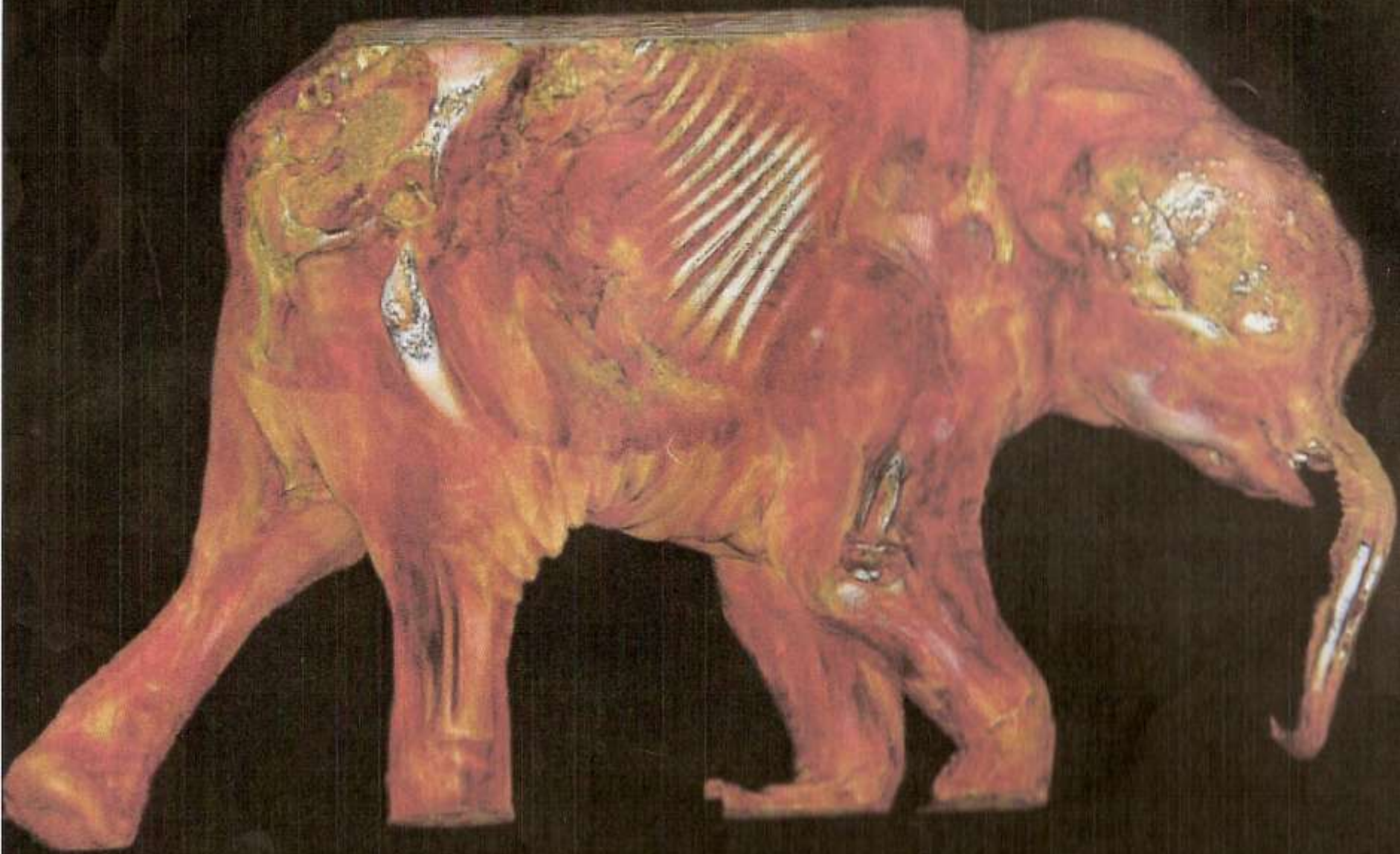


















SN 517 ETHAN



0D24018N













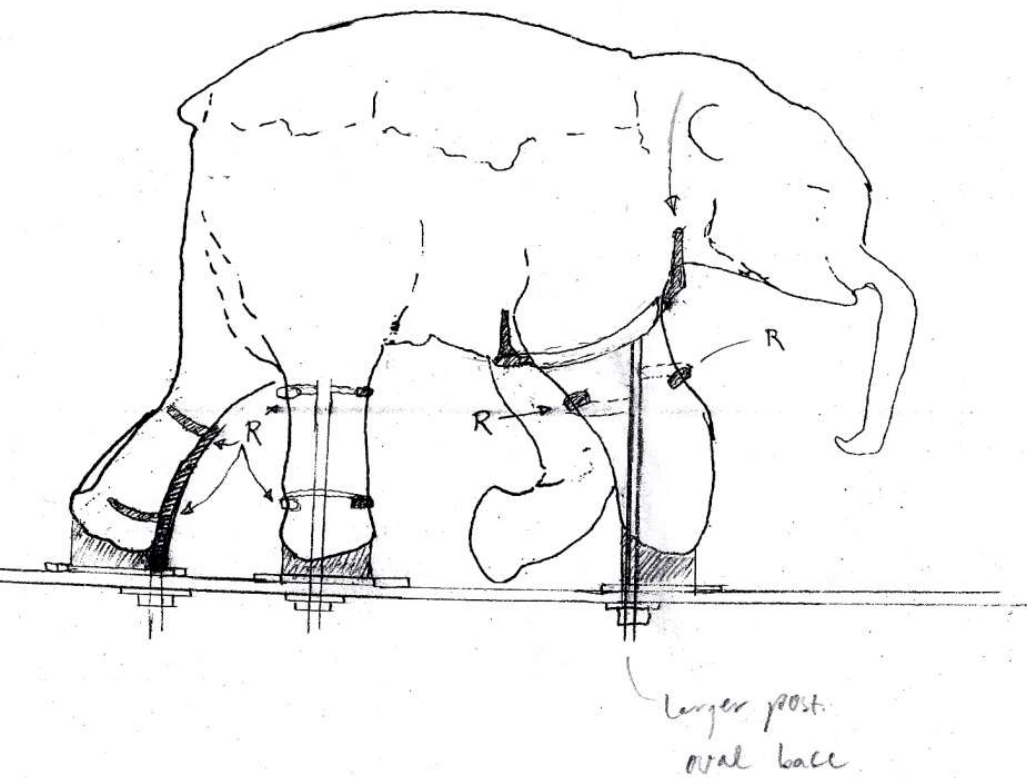




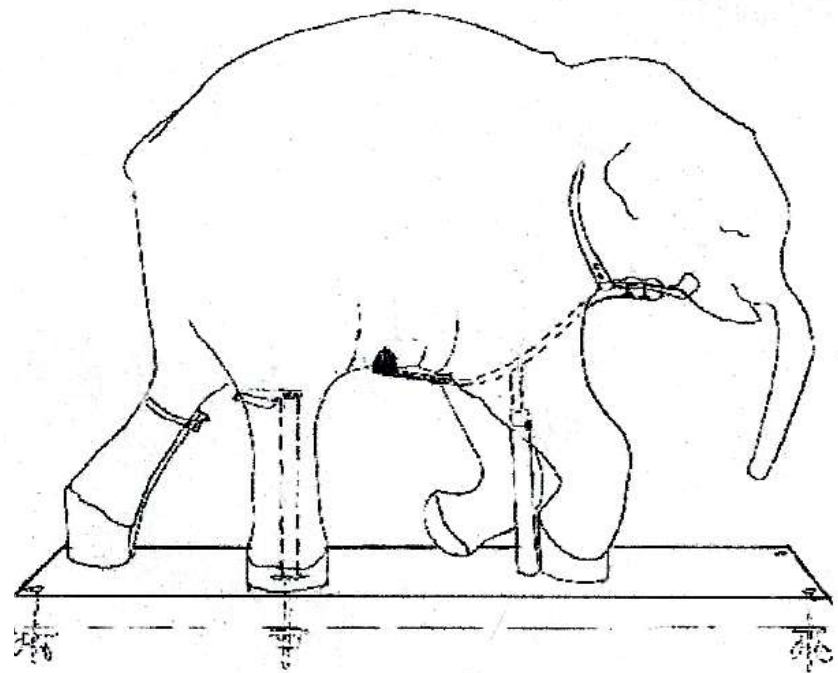








Early sketch of mount proposal



Sketch of final mount





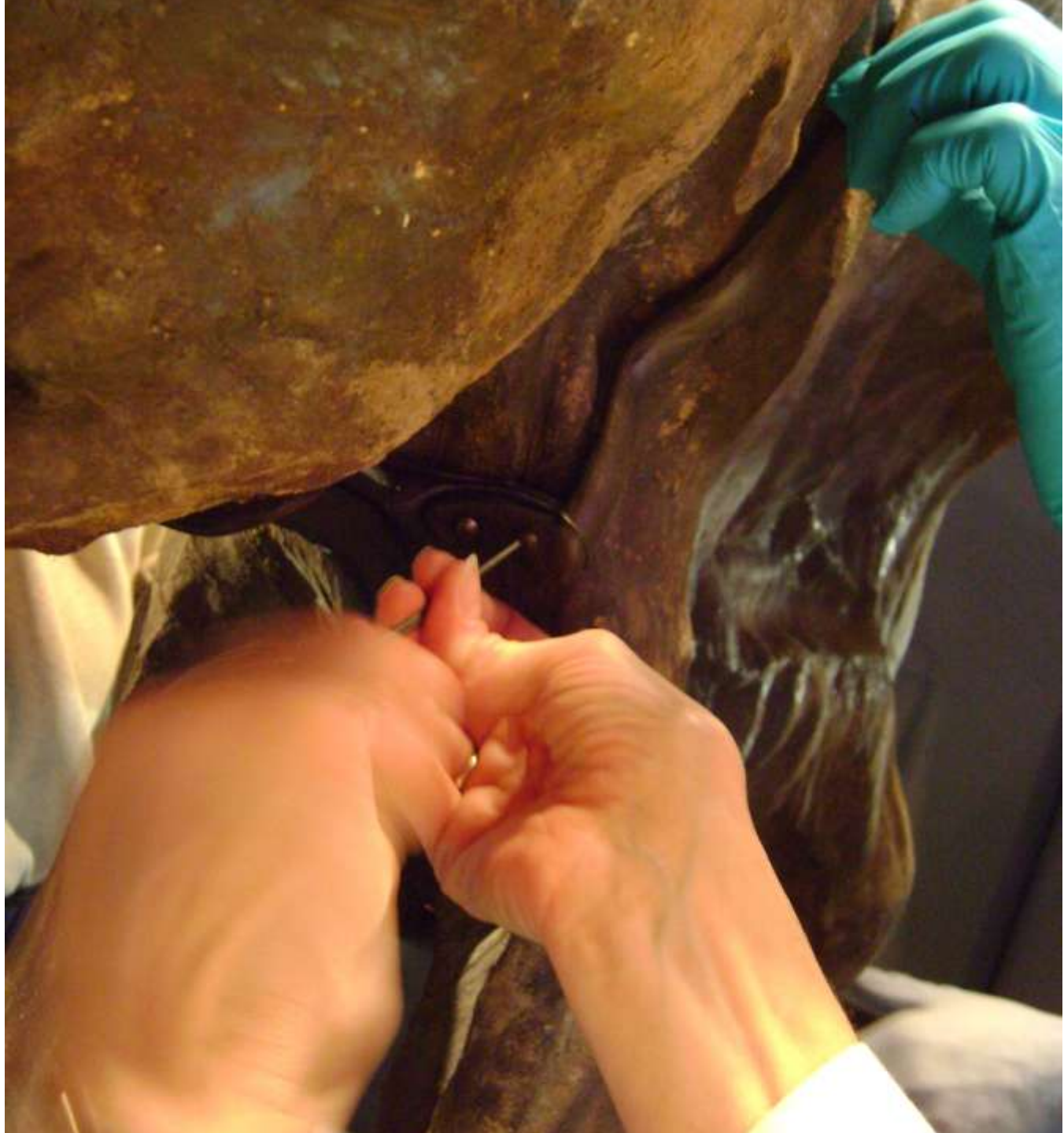






















Is Lyuba preserved?
...ation, Russian







"Tusk"

Woolly mammoth
Mammuthus primigenius
About 10,000 years old
The mammoth is a member of the elephant family. It is the largest land mammal that ever lived. It lived in the Northern Hemisphere during the Pleistocene and Holocene epochs. It is the only member of the elephant family that is still extant. It is the only member of the elephant family that is still extant. It is the only member of the elephant family that is still extant.



Where was the mammoth?
In 1866, a mammoth skeleton was found lying along a river bank in the Yukon Territory. The skeleton is about 100,000 years old. It was found in the Yukon Territory, Canada, and is now in the collection of the Smithsonian Institution.

How is it kept preserved?

It is kept in a special solution. The solution is made of water, salt, and other chemicals. The solution is changed every few weeks. The mammoth is kept in the solution for about 100 years. It is then kept in a special solution for about 100 years.



Section # / Title	3	Social Behavior	Case Number	07	Coarctation	Height	36	
Inventory #	9	Type	Scientific Specimen				Width	39 in
Brief Description	Mummified baby mammoth (commonly known as 'Lyuba')		Catalog Number		Depth			12
Institution	Shemanovskii Museum, Salekhard (Yamal Province) Russia							
Handling	Formaldehyde present see safety sheet. Hold solid areas only. Avoid mineral crystals, hair,							



SEE LYUBA INSTALLATION MANUAL.

MOUNT TRAVELS IN CRATE

PERSONAL SAFETY - Formaldehyde is present (see Safety sheet in manual)
Nitrile gloves, lab coat, and formaldehyde respirator may be needed.



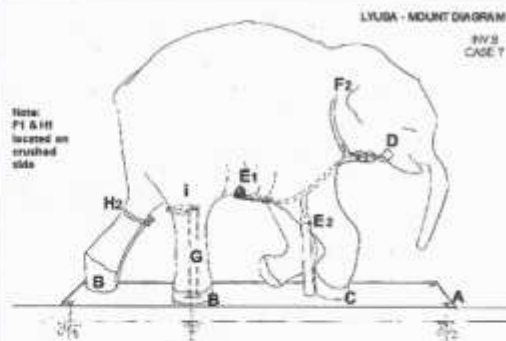
NEED 6 people to install. (4 lifters and 2 spotters install brackets and do some lifting if needed)

WEIGHT - 100 lbs. Most of her weight is in the head and chest. Lender has requested that we do not put a lot of weight onto the front legs.
CONDITION - Lyuba loses sand and some mineral crystals from the trunk and mouth area. If this occurs bag it and give to registrar.



TRANSPORT Lyuba on padded cart WITH good side up. Foam support under head to prevent ear and trunk from damage.

ORIENT Lyuba's head at the same end as the vertical post on mount.



HANDLE with gloves on.

HOLDING AREAS - are very limited.
Look over animal carefully for hand holds at top of legs, belly, chest neck head.
AVOID trunk, ears, blue and yellow mineral deposits, hair and soft spots.

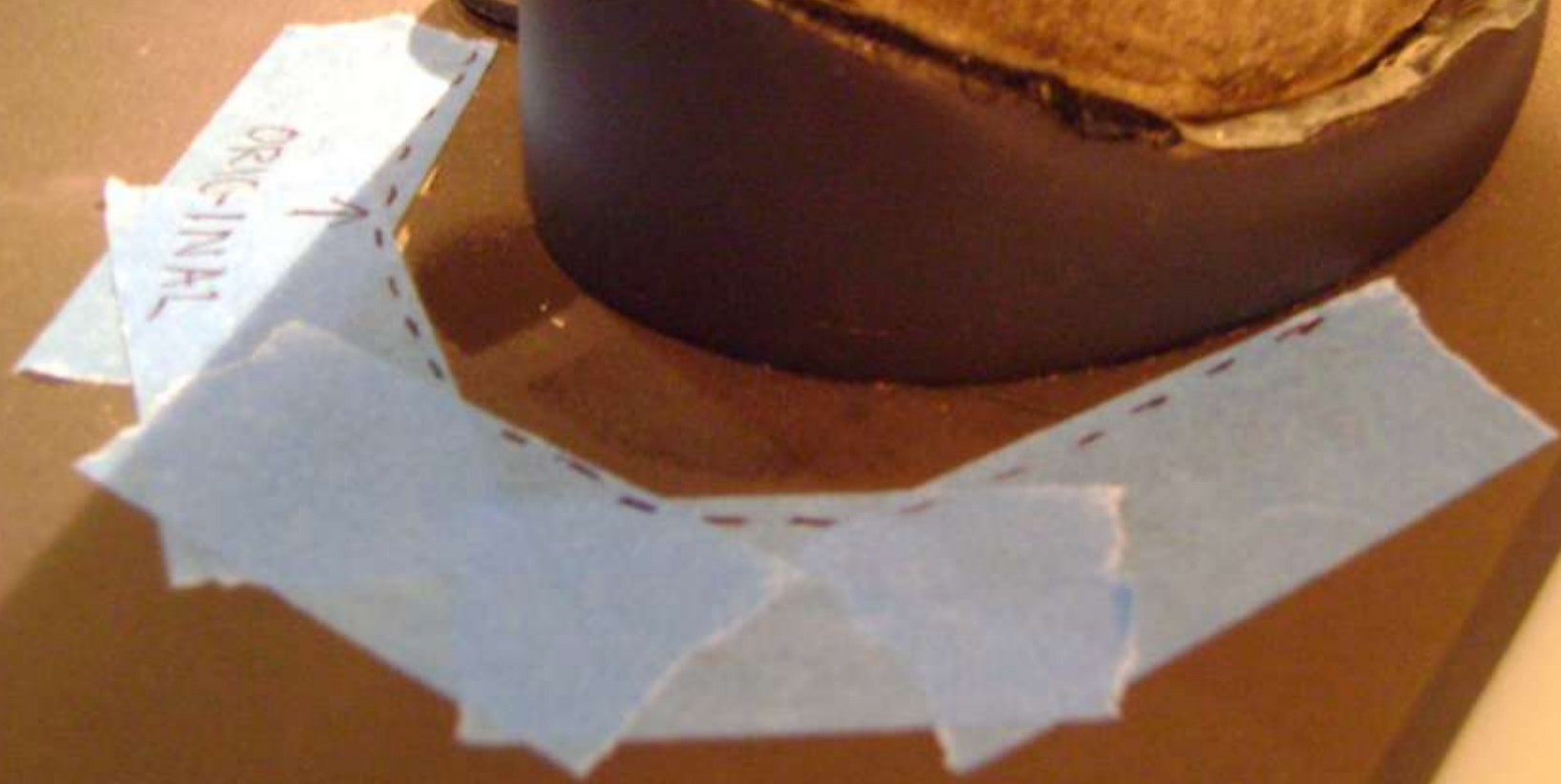
MOUNT PARTS - base plate w/ stationary parts & (10) removable brackets.

QTY	LENGTH	ITEM
4 ea	1-1/2"	1/4-20 flathead socket cap screw, nut, wash
11	different	8-32 buttcap socket m.s 1/4, 3/8, 1/2,
1 ea		1/2" x 13 nut and large washer
2	3/4"	8-32 flathead socket m.screw

TOOL:


allen wrench, socket wrench, sueded polyethelene from Benchmark

(Spare leg bracket for vertical rear leg. Use if needed for quake zone only)



ORIGINAL





↑
ORIGINAL