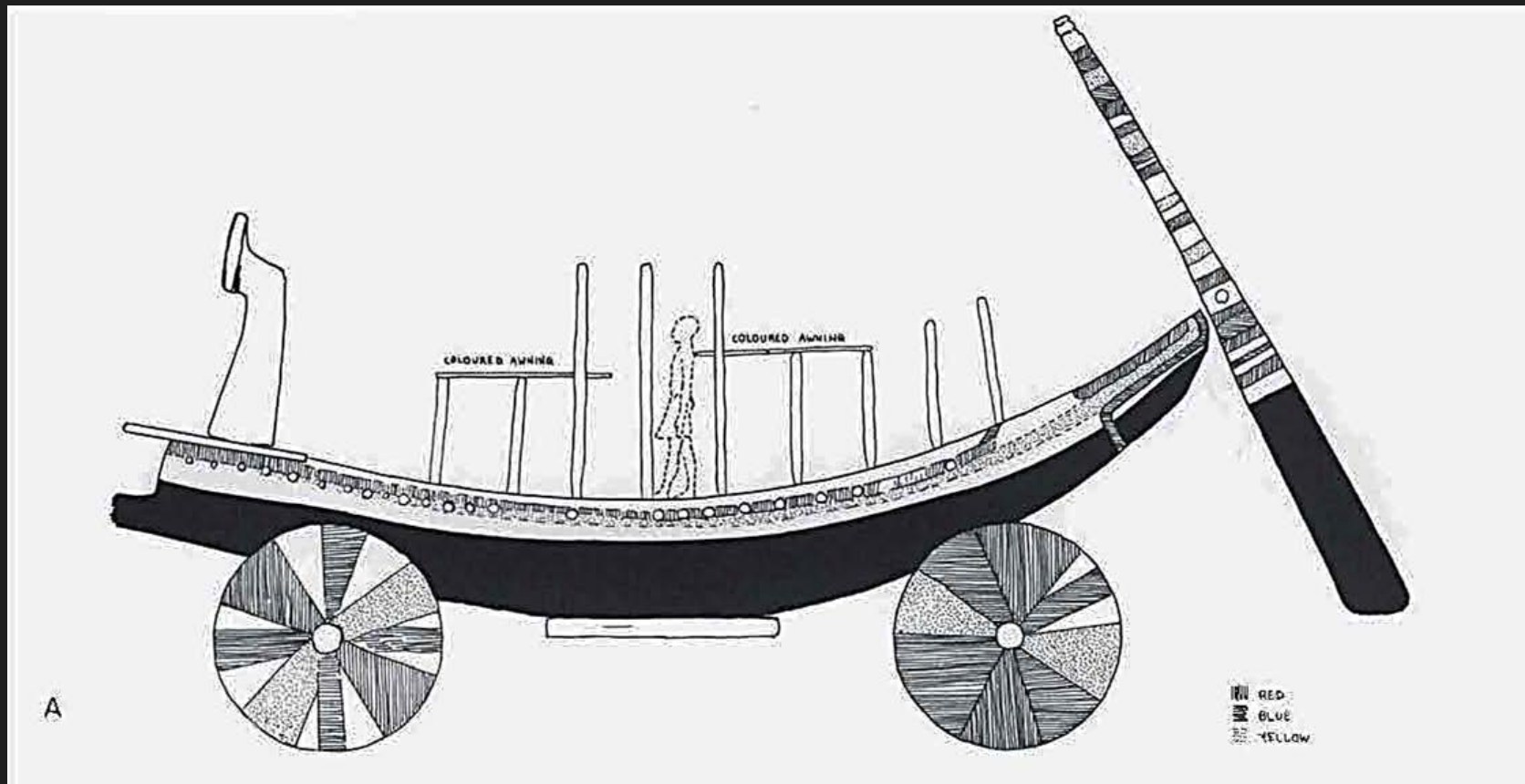




GUROB SHIP CART MODEL: Unifying Fragments

Richard Hards
Senior Mountmaker
Antiquities Conservation
J Paul Getty Museum

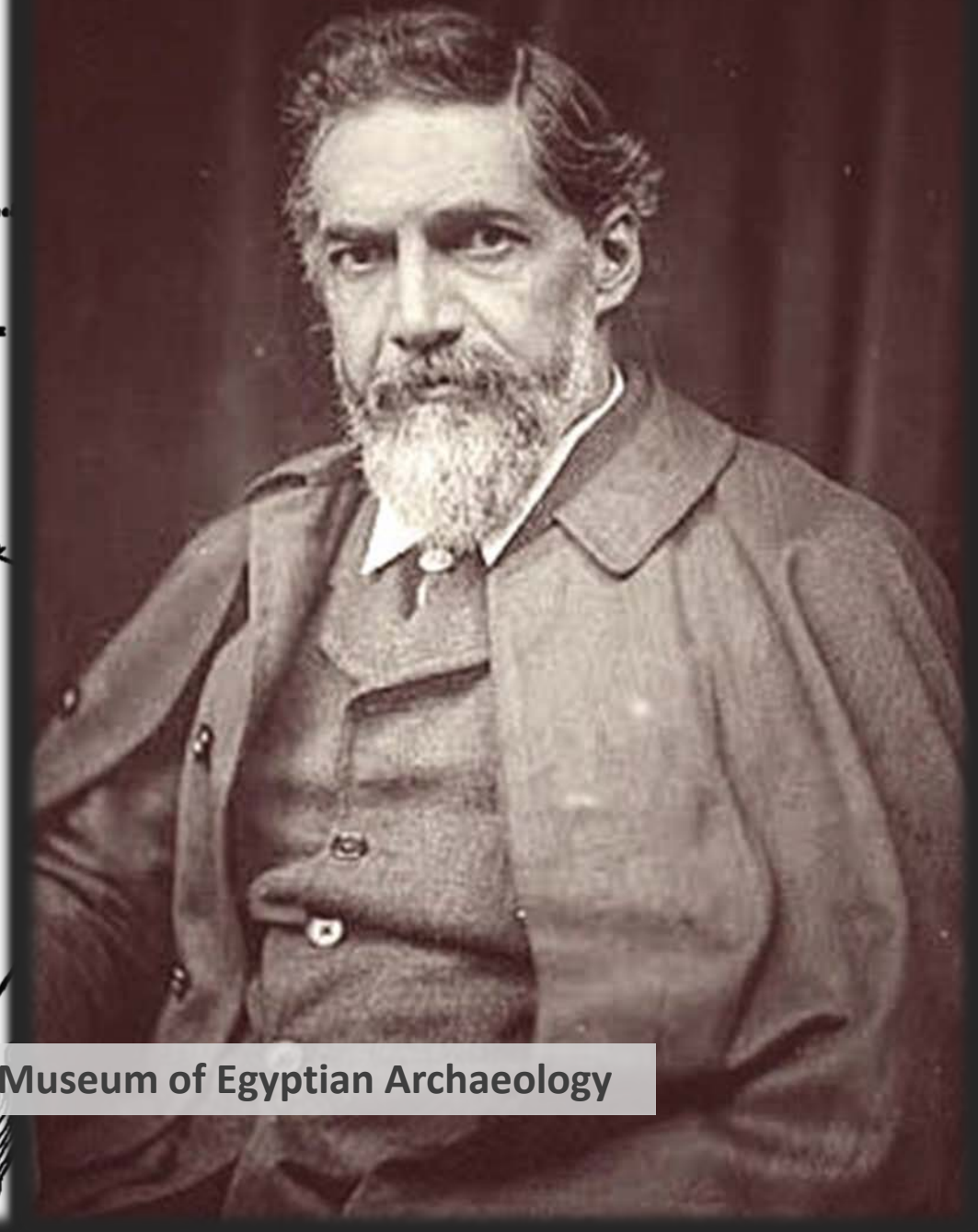
The Gurob Ship-Cart Model



Model of an Aegean Ship, late 13th – early 12th Century BCE
Petrie Museum of Egyptian Archaeology, University College London
H: 13.2 x W: 38.5 x D: 5.5 cm
Owner Number: 16044, Sycamore Fig wood and pigment



Sir William Matthew Flinders Petrie



Hand-drawn map and photograph courtesy of the Petrie Museum of Egyptian Archaeology

The Gurob Ship is a precursor to ships used by the Greeks when they sailed for Troy.

Stempost



Image of earlier reconstruction

Select photographs and sketches courtesy of *The Gurob Ship-Cart Model and Its Mediterranean Context*, by Shelley Wachsmann



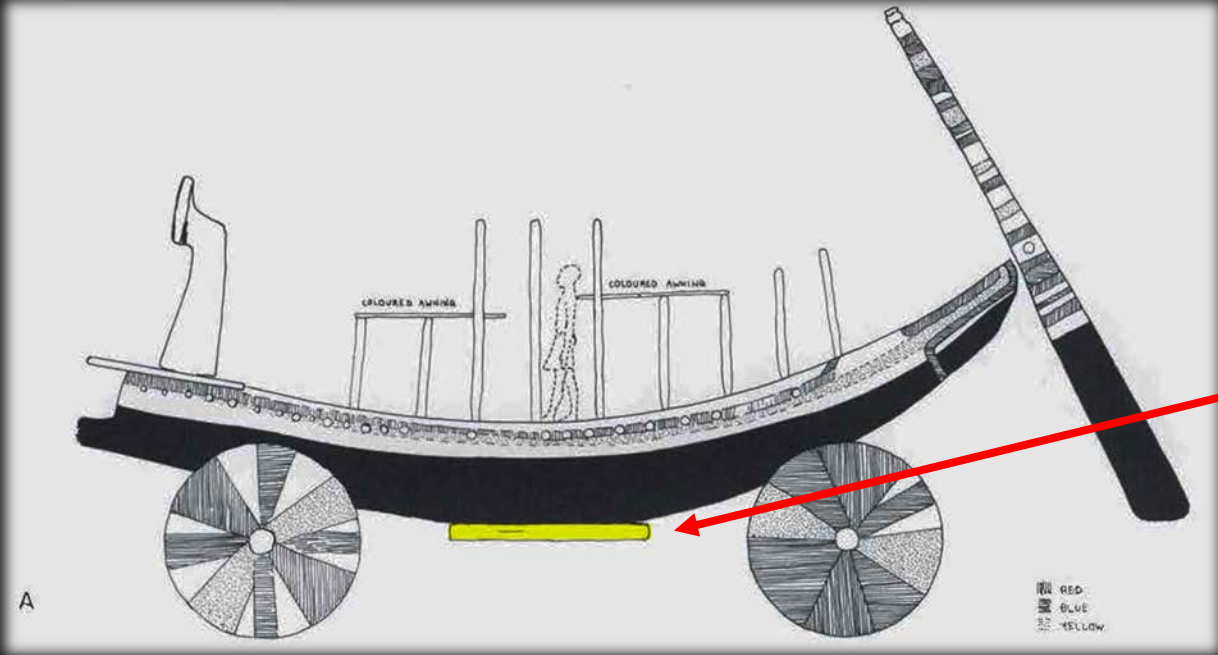
Polychromed Wheels and Pavois



Wheel



Pavois



The Ship was originally considered to be a children's toy.



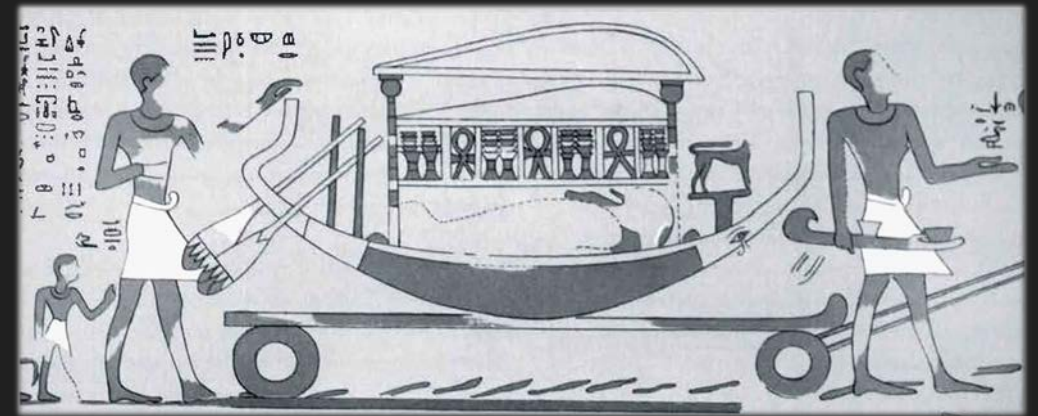
Image of an ancient Romano-Egyptian toy and vintage toy boat



The Ship reflects influences of Cult Ships from Northern Europe.



Image from the Moulid procession in Luxor, Egypt – 1998

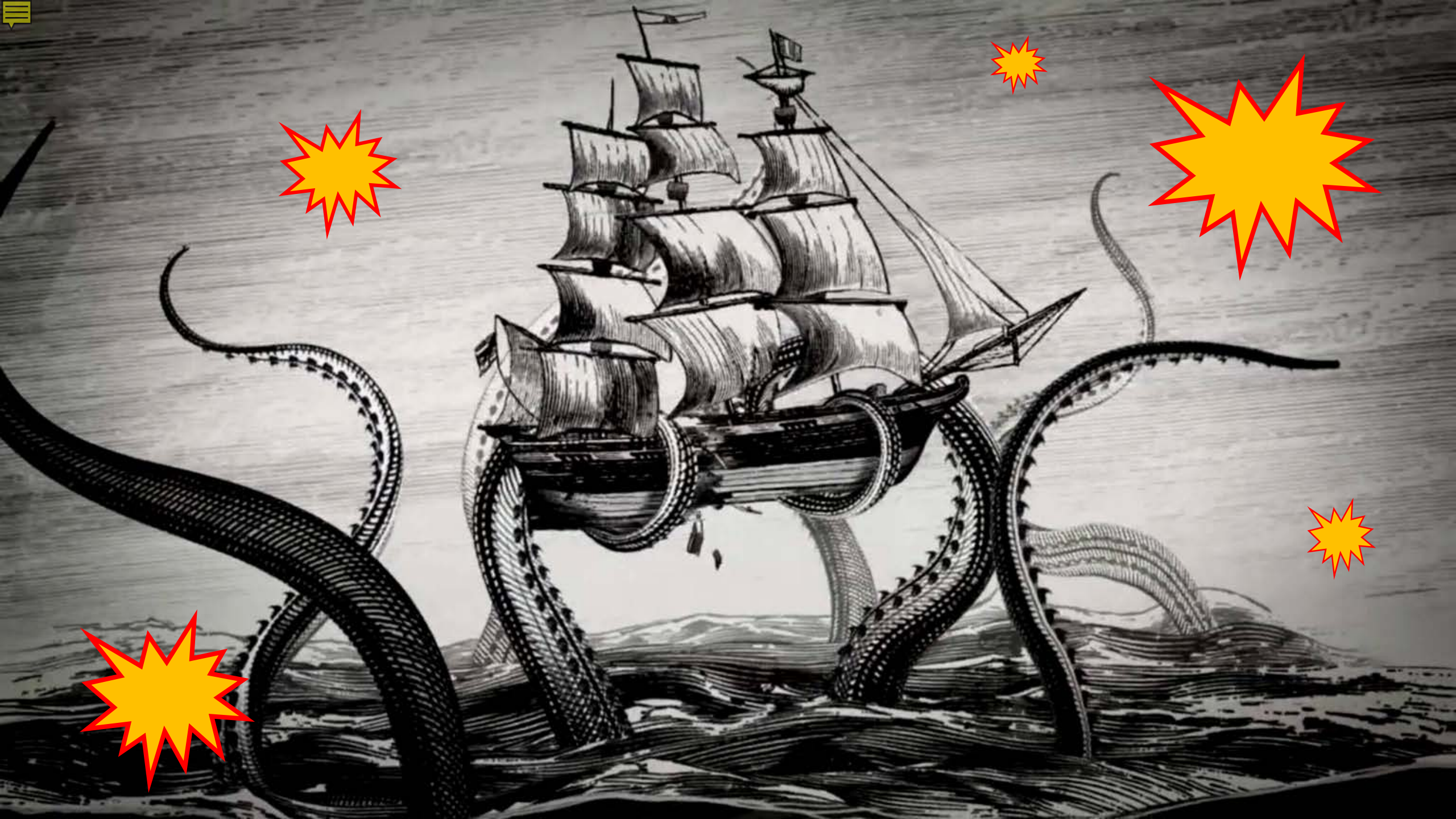


Egyptian funerary boat on a wagon,
XIth dynasty

The Ship will be arriving in DOZENS of fragments



modern pops and tape used
for mounting UC 160494
- details for recording original
elements study. Volume 10 p.



Unpacking the Ship Model at the Getty Center





Eight Fragments selected for display



Pavois



Rudder



Wheels



Ship's Hull



**Digital model of the Gurob Ship with
each piece in its correct position.**

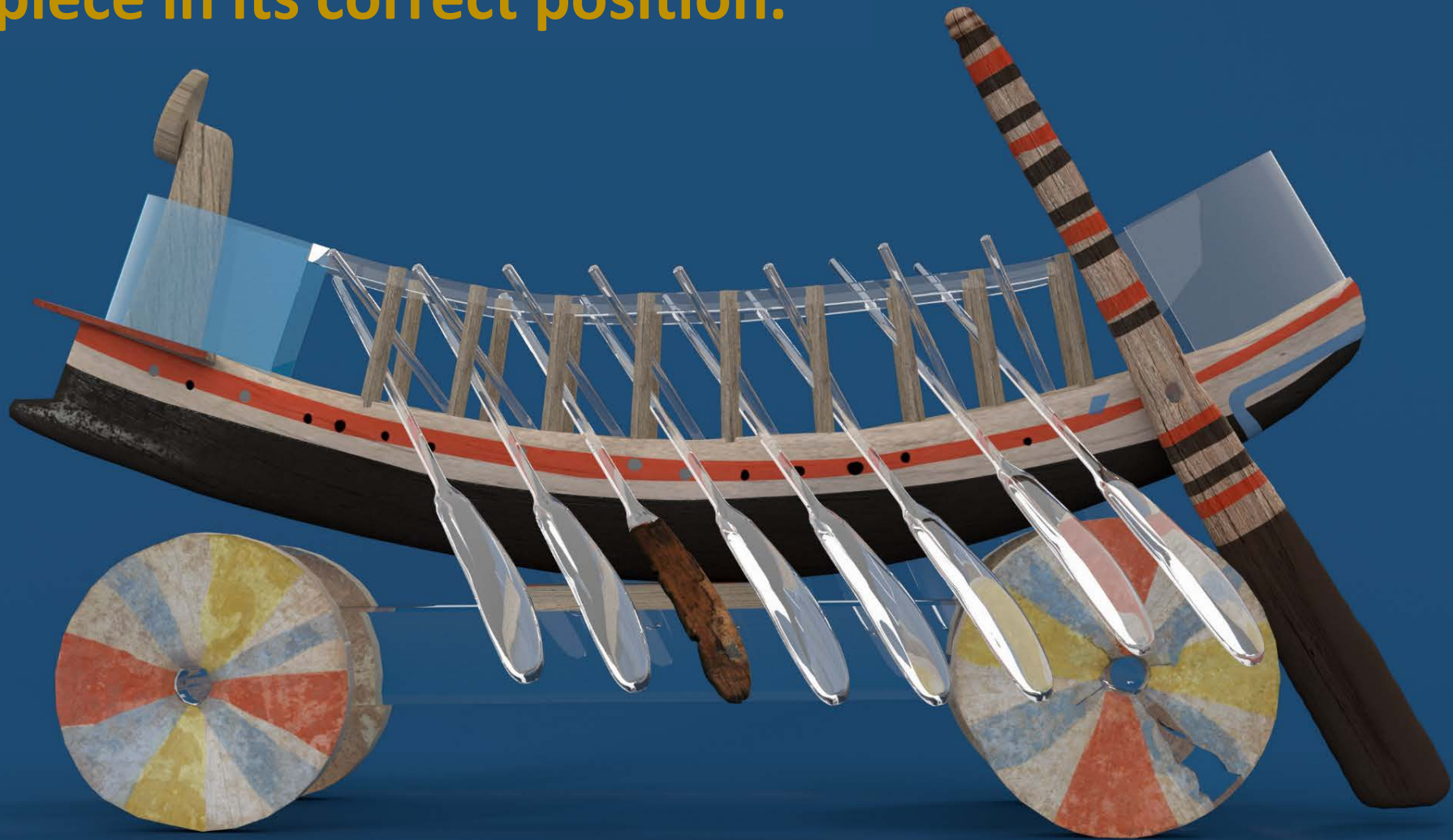


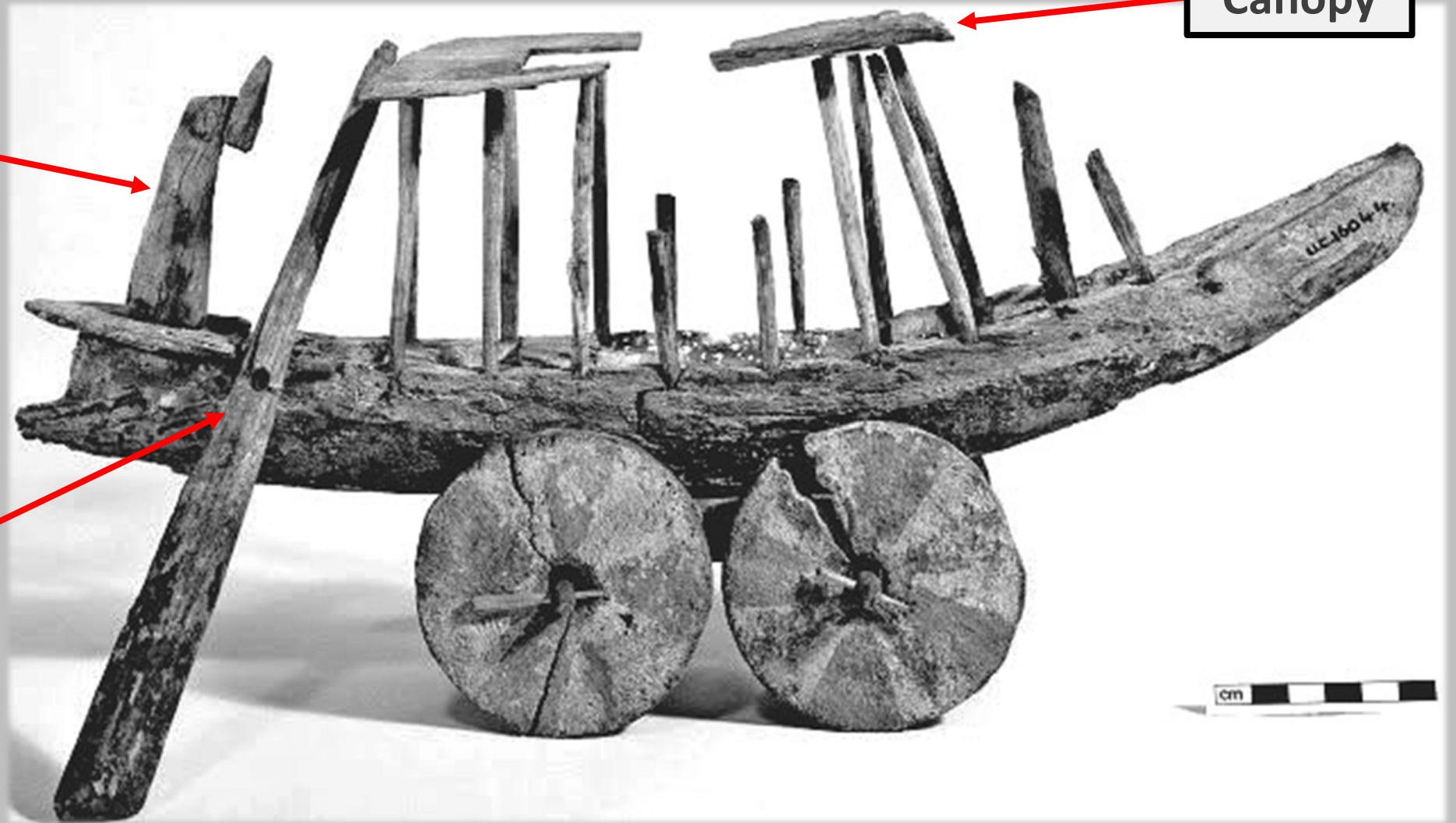
Image courtesy of the Institute for the Visualization of History, Inc.

Historic assemblage of the Gurob Ship Model

Stempost is installed backwards

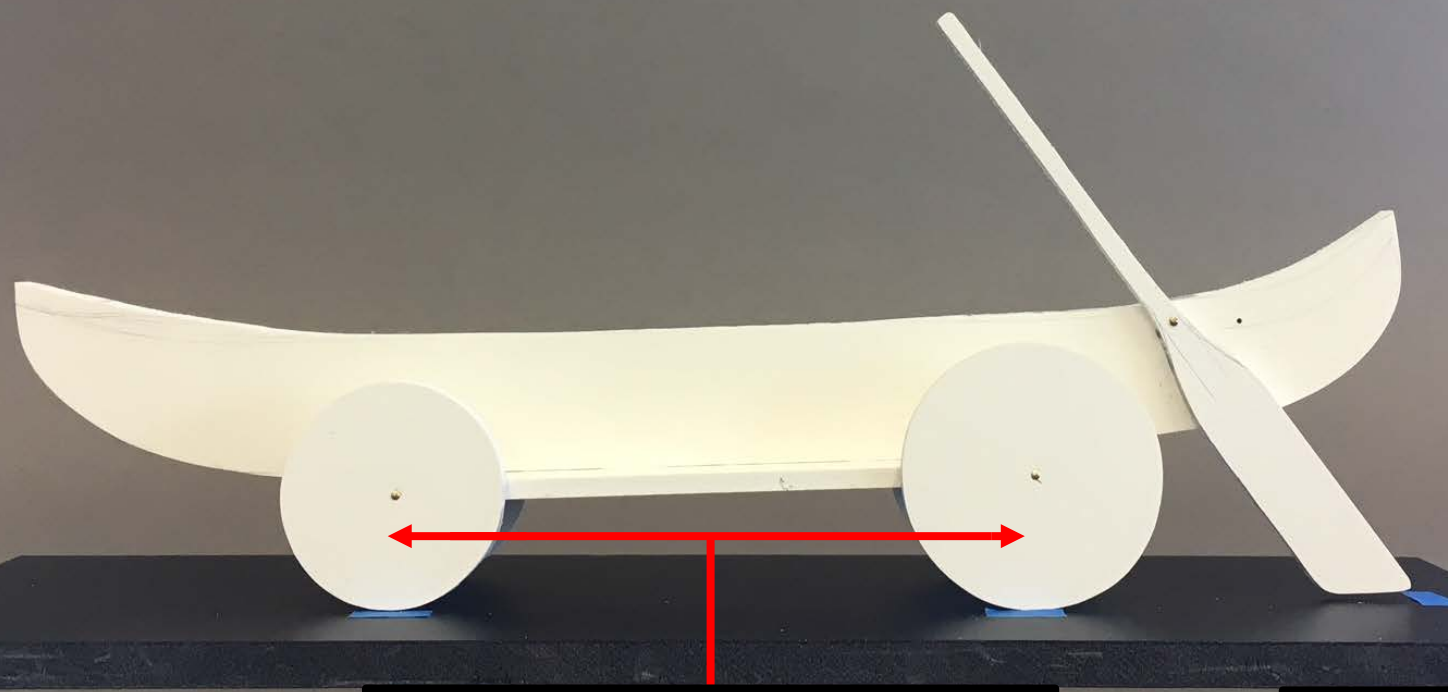
Rutter should be placed at the stern of the ship

Canopy

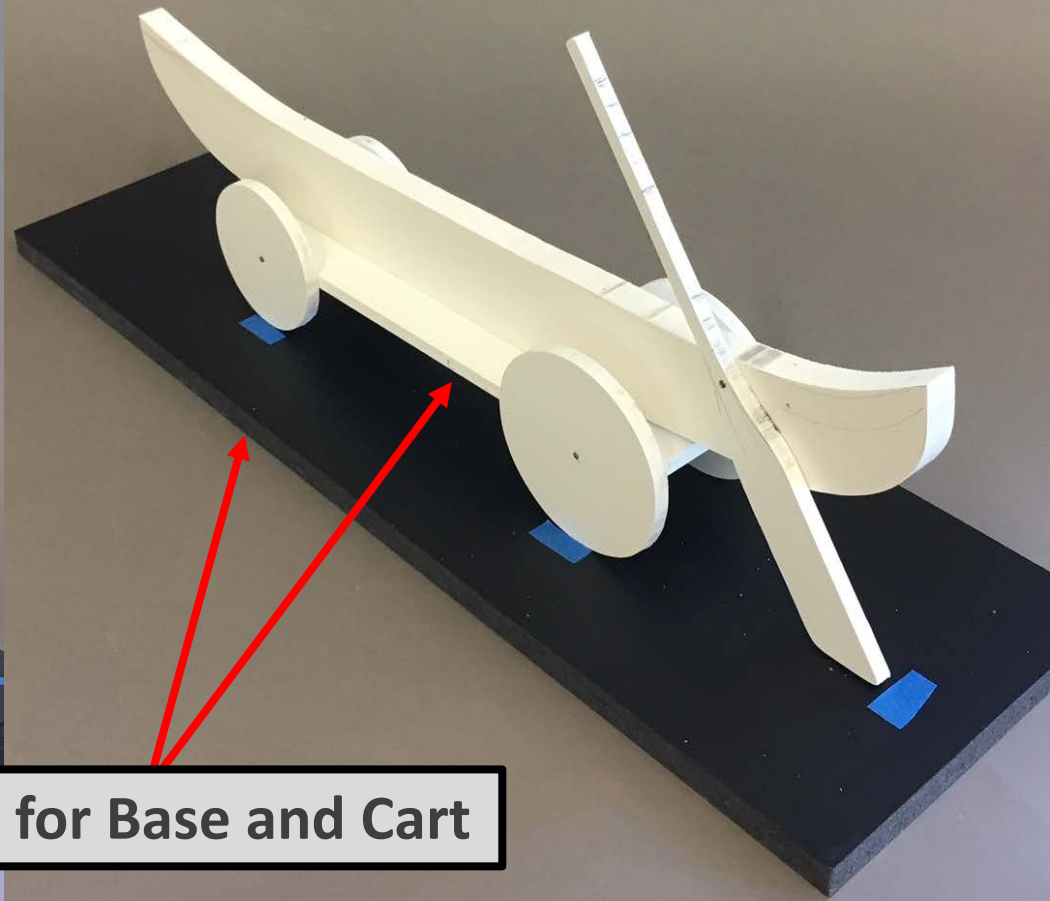




Display mock-up for Curators



Distance of Wheel Base



Dims for Base and Cart

Fitting the two halves of the Ship's hull in their proper orientation.



Determining the orientation of the ship in relation to the wheel base.



The wheels are different diameters.

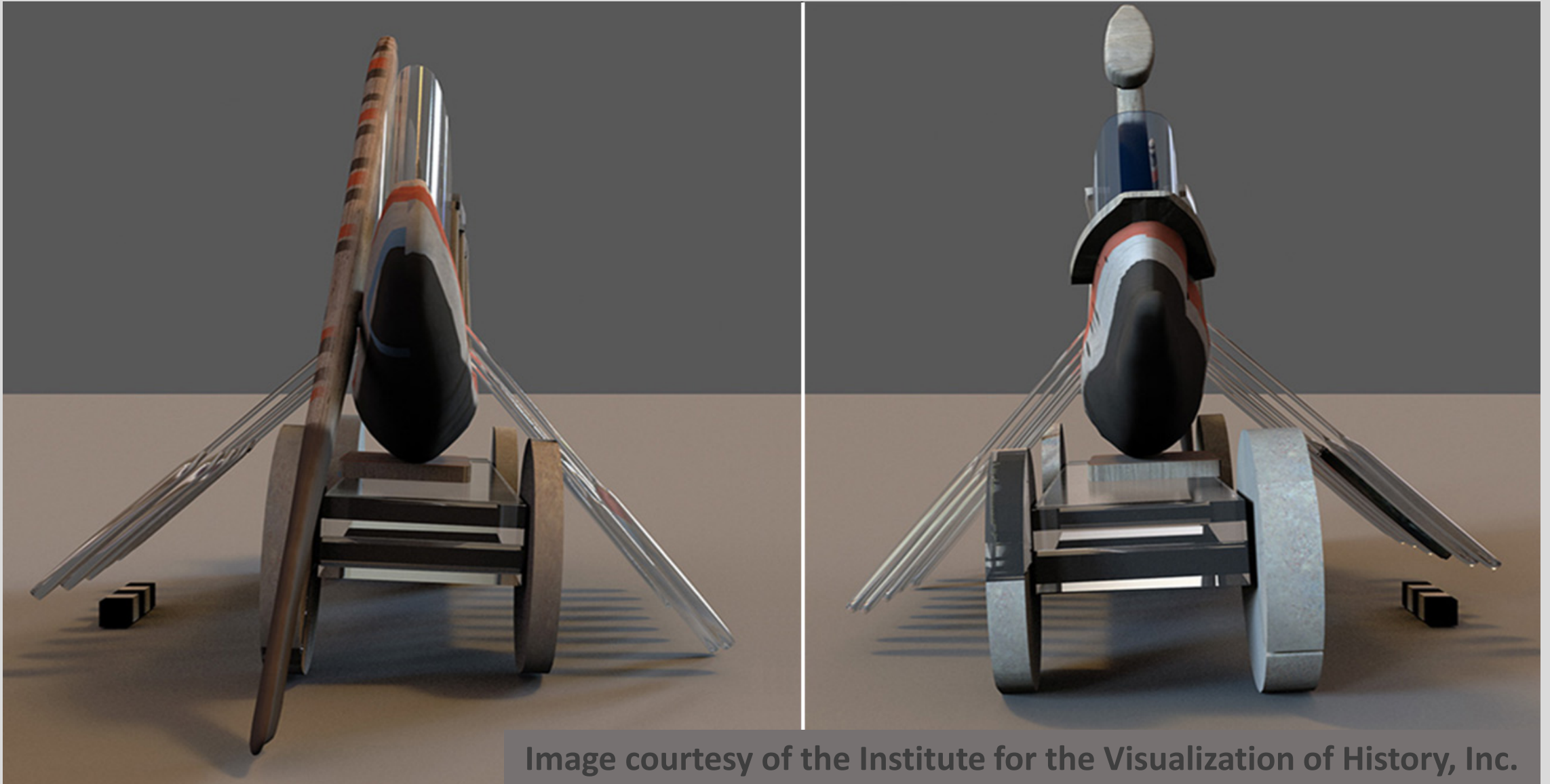
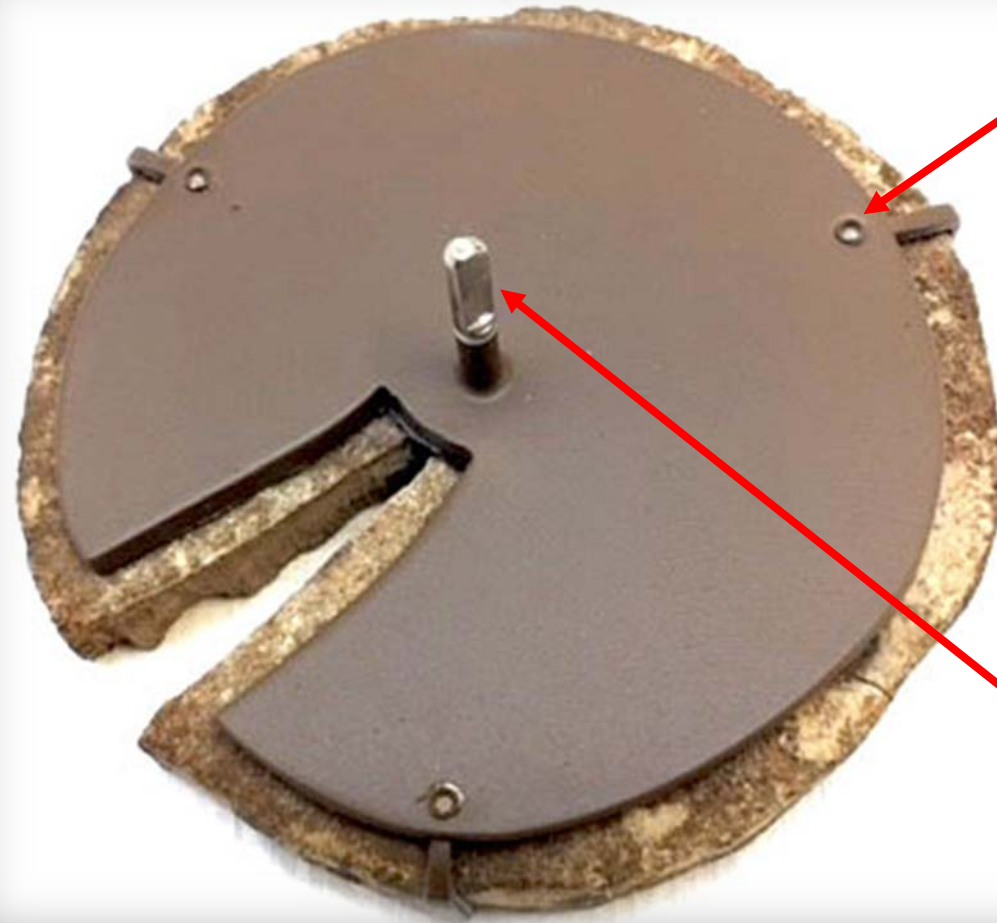


Image courtesy of the Institute for the Visualization of History, Inc.

Fabricating mount for Ship's wheels



Mount for the Ship's wheels



Set Screw
for fastening
removable
clips

Flat area on
the axle fixes
the wheel's
orientation
and prevents
rotation

Four wheels installed on Ship's cart

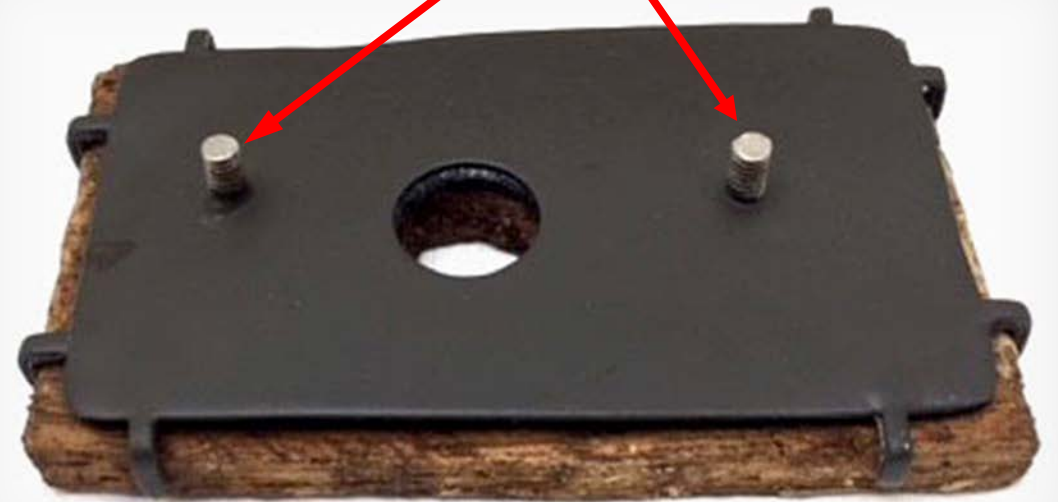


Cradle mount for the Pavois



Polyethylene Sueded Felt

Threaded posts for fastening the mount to the Ship's Cart

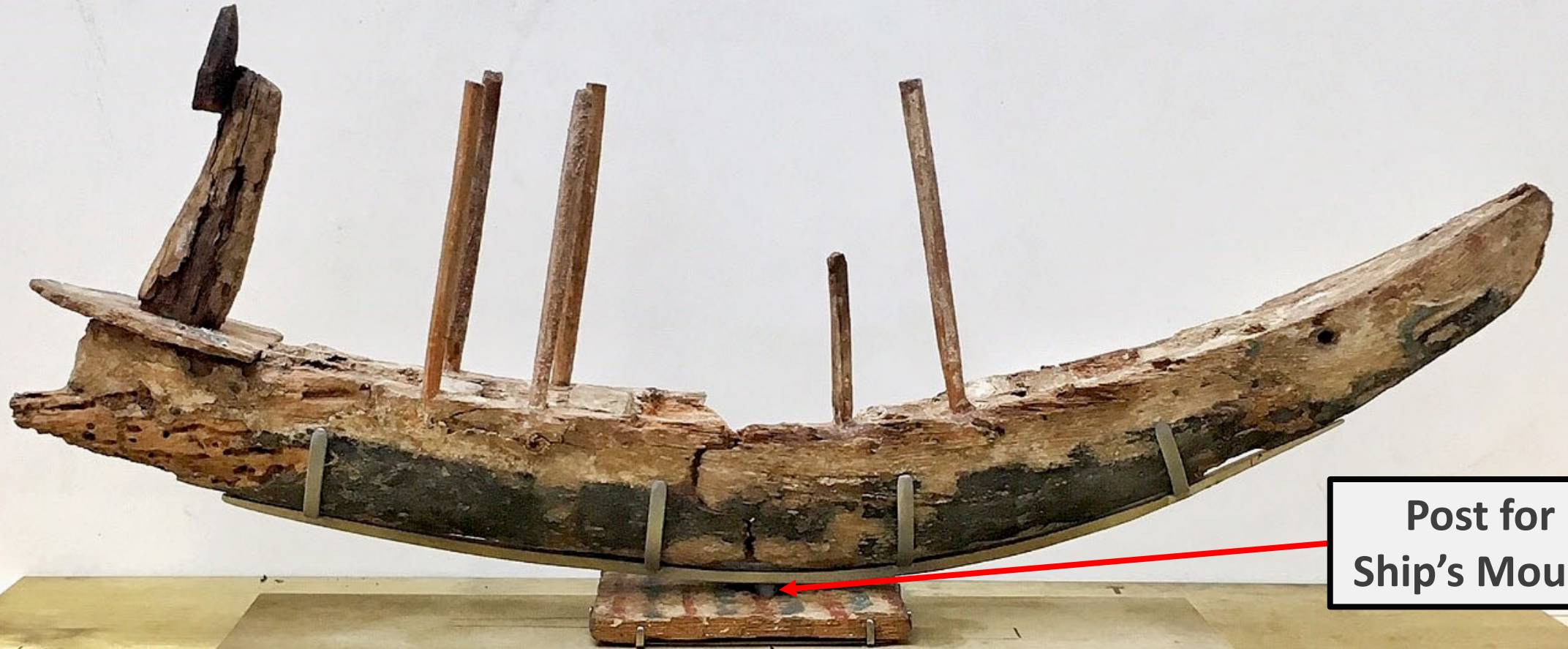




The Pavois installed on the Ship's Cart



Ship model in proper orientation and floating above the Pavois



Post for
Ship's Mount

Receiving holes for the axles.

Ship assembled with Pavois and Wheels



Hole where
Rudder originally
attached to Ship

Wheels float
above Base



Mount for Ship's Rudder

Repaired
break in
Rudder

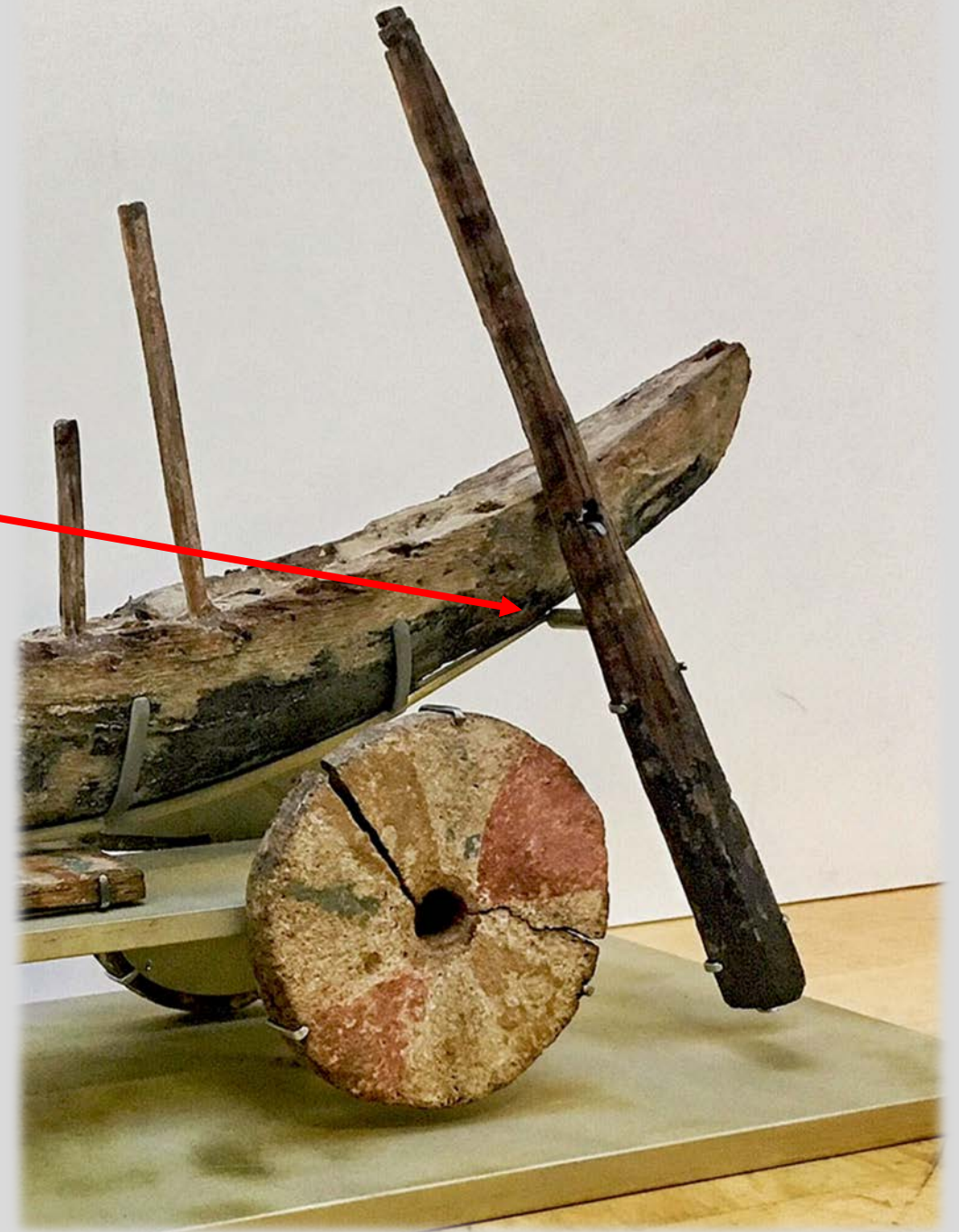
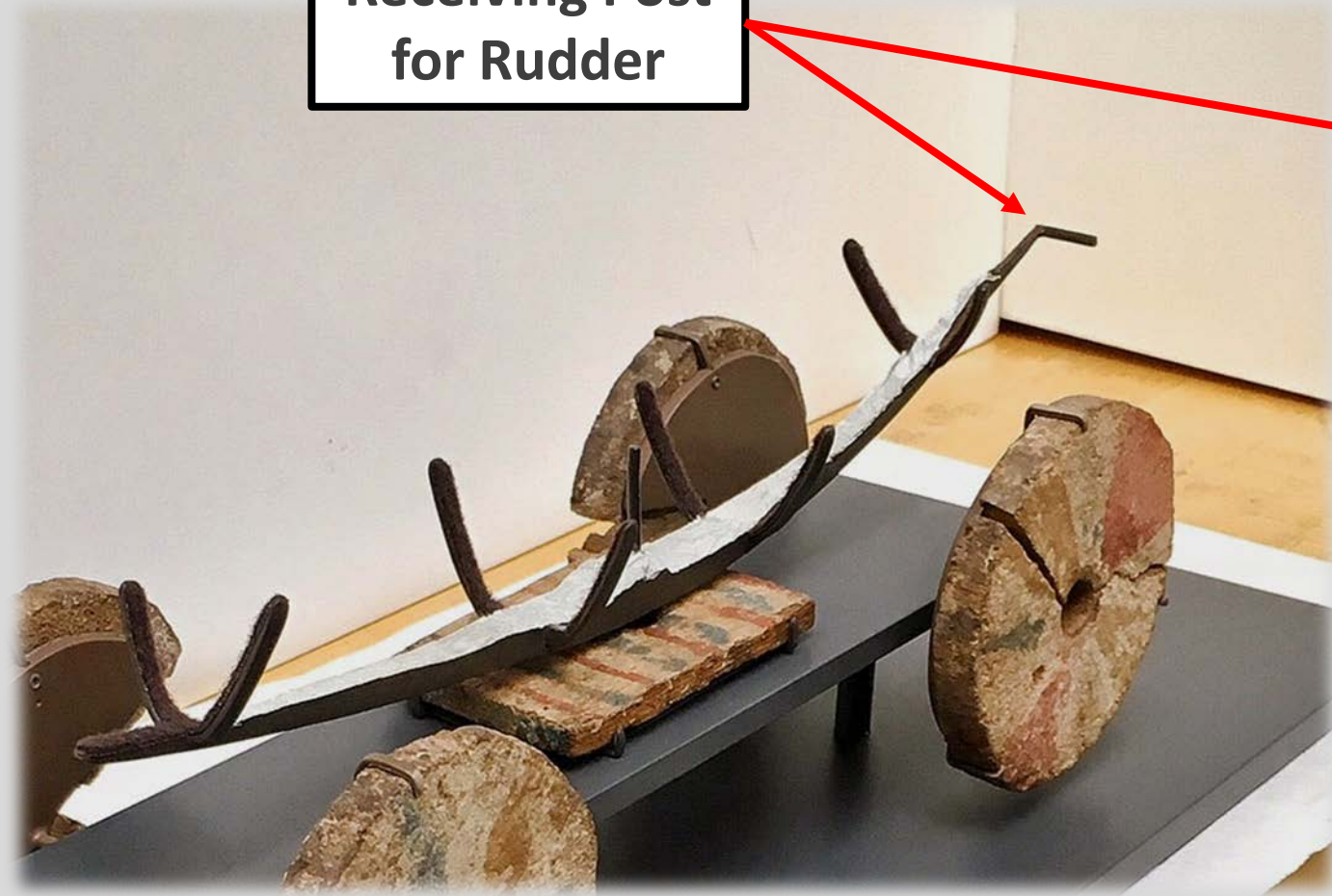


Tubing with set
screw for fastening
to receiving post

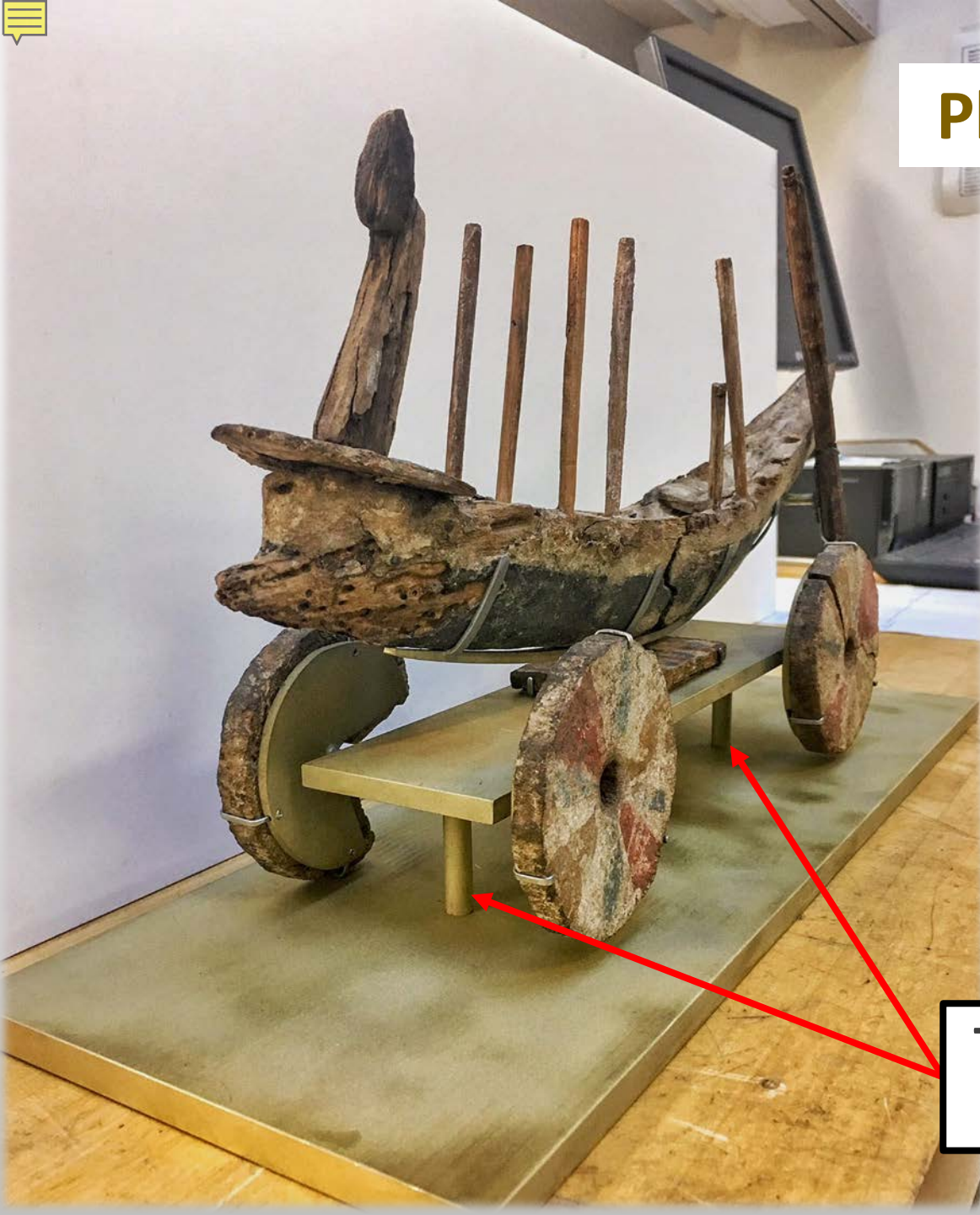


Attaching the Ship's Rudder

Receiving Post
for Rudder



Placing the Cart onto the Base Plate

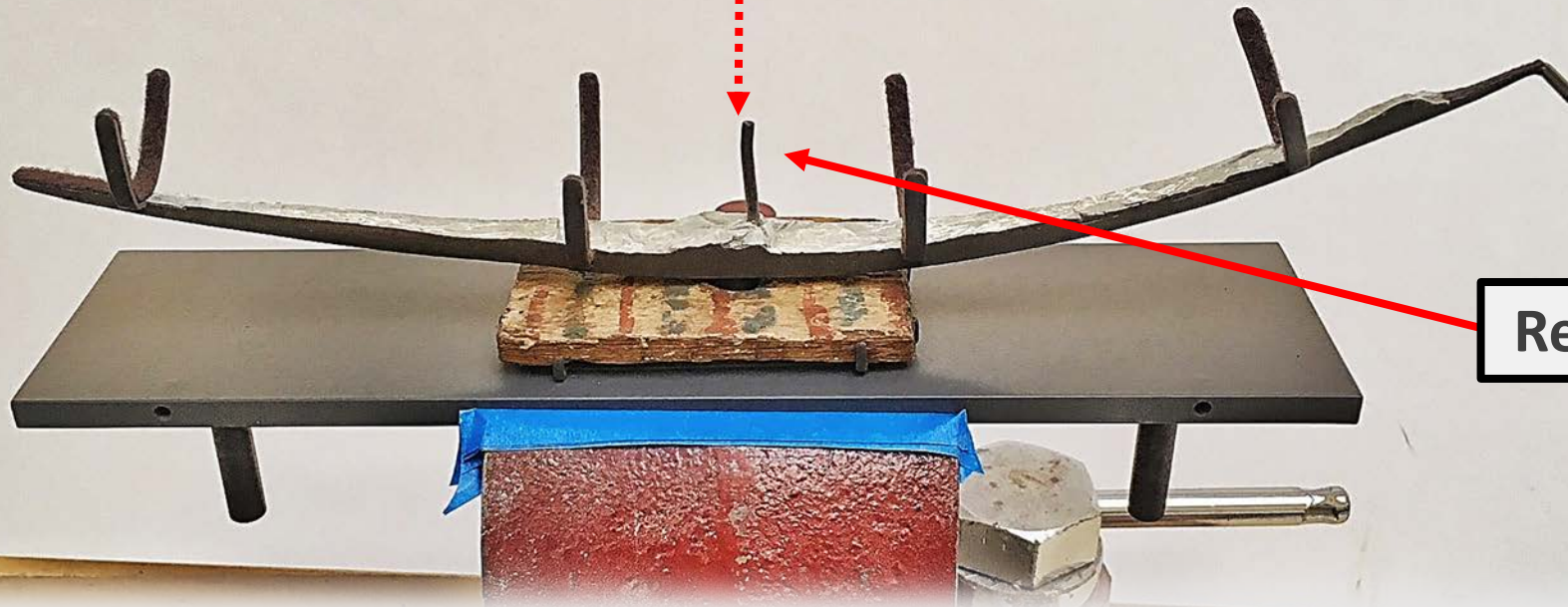


Two vertical posts support the Ship and are concealed behind the wheels.

Mount to prevent Ship's hull from vertical displacement.



Mount for vertical Capture



Receiving Post



Photograph courtesy of Rebecca Vera-Martinez, Sr. Photographer, J Paul Getty Museum



The Gurob Ship Cart Model on display, *Beyond the Nile: Egypt and the Classical World*,
at the Getty Center



Ship Model of the Gurob Tomb
This model, made of wood, shows a boat with several rowers and a standing figure at the stern. It is a representation of a boat used for transport or warfare in ancient Egypt.

Model of an Ancient Ship
This model, made of wood, shows a boat with several rowers and a standing figure at the stern. It is a representation of a boat used for transport or warfare in ancient Egypt.

Model of an Ancient Ship
This model, made of wood, shows a boat with several rowers and a standing figure at the stern. It is a representation of a boat used for transport or warfare in ancient Egypt.

