

Indianapolis Museum of Art – Material Analysis Sheet

Material:

Fome-Cor with Zeolites

Polystyrene with a jute paper face



Oddy:

Pass

N = 3; measured 3/2016 to 7/2016



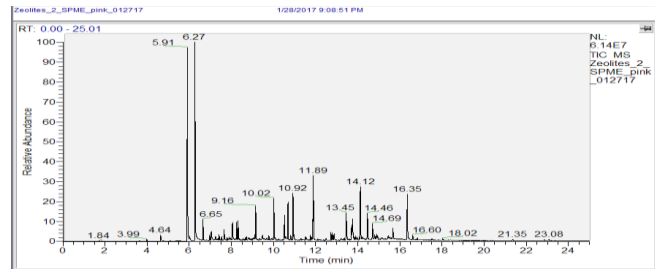
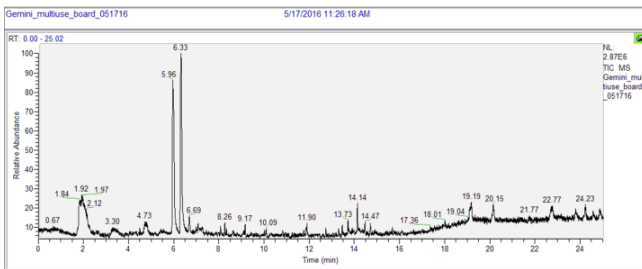
Evolved-Gas Analysis:

EGA reveals the presence of neopentane, a blowing agent, at 1.92, benzene and 4.73, ethylbenzene at 5.96, styrene at 6.33, 2-ethyltoluene at 6.69, and a styrene dimer at 14.14

SPME Analysis:

SPME shows ethyl-benzene at 5.91, ethenyl-benzene at 6.27, p-ethyl-toluene at 6.63, varying length aldehydes from 8 to 12, 1,3-diphenyl-propane at 13.45, and hydrocarbons with benzene rings from 13 to 16.

Notes:



Microchemical Tests:

Azide: **P**

Chromatropic Acid: **F-S**

Iodide/Iodate: **P**