

Indianapolis Museum of Art – Material Analysis Sheet

Material:

Bentley Kings Road

Polyethylene terephthalate backing with nylon fiber



Oddy:

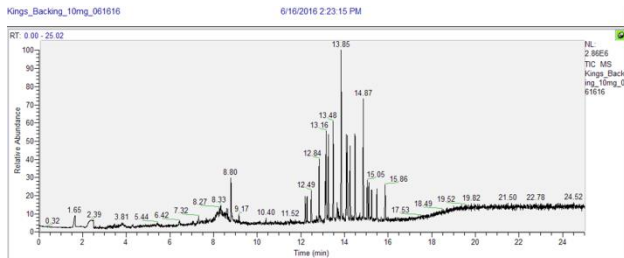
Pass

N = 3; measured 3/2016 to 7/2016



Evolved-Gas Analysis:

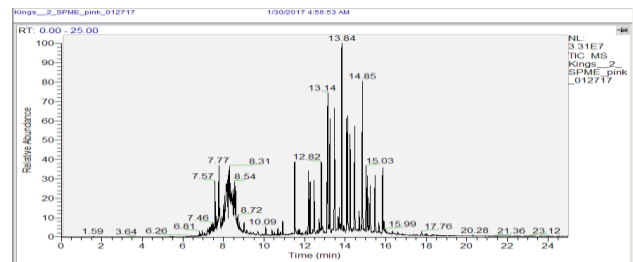
EGA reveals the presence of 1-propanol, 2-(2-hydroxypropoxy)- at 7.9, a benzene ring with varied hydrocarbons substituent from 12 to 16, and heptadecanoic acid at 17.79. Backing of the carpet also specifically showed, nonenal at 8.80, and again the benzene ring.



Notes:

SPME Analysis:

SPME shows 1,1'-oxydi-2-propanol at 7.57, 2,2'-oxubis-1-propanol at 7.77, hydrocarbons from 8 to 12, various hydrocarbons with a benzene ring from 12 to 16, and methyl isosterate at 17.76



Microchemical Tests:

Azide: **P**

Chromatropic Acid: **P**

Iodide/Iodate: **P**