

Indianapolis Museum of Art – Material Analysis Sheet

Material:

Upholstery Fabric (Washed)

Polyethylene terephthalate



Oddy:

Pass to Temporary

N = 3; measured 3/2016 to 7/2016



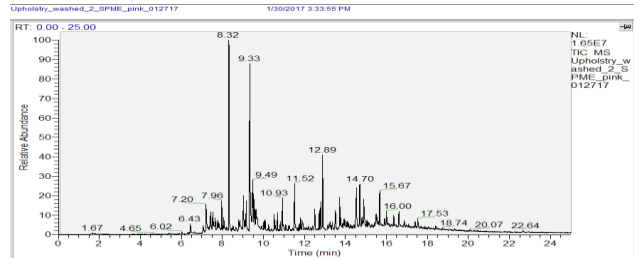
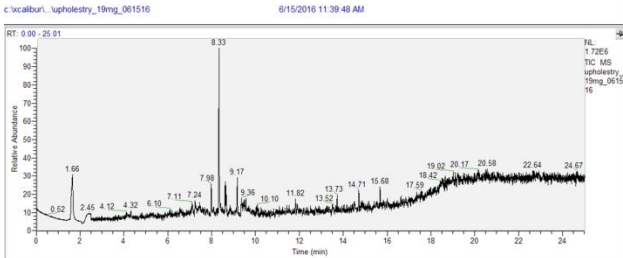
Notes:

Evolved-Gas Analysis:

EGA reveals the presence of chlorine containing hydrocarbon at 7.98, a possible silicone cleaning detergent at 8.63, column bleed at 8.33 and 9.17, as well as hydrocarbons between 12 and 15.

SPME Analysis:

SPME shows chlorine containing hydrocarbons around 7, n-nonaldehyde at 8.32, a-hydroxyethyl phenyl ether at 9.33, varying lengths aldehydes from 10 to 13, and hydrocarbons from 14 to 18.



Microchemical Tests:

Azide: **P**

Chromatropic Acid: **P**

Iodide/Iodate: **P**