

Indianapolis Museum of Art – Material Analysis Sheet

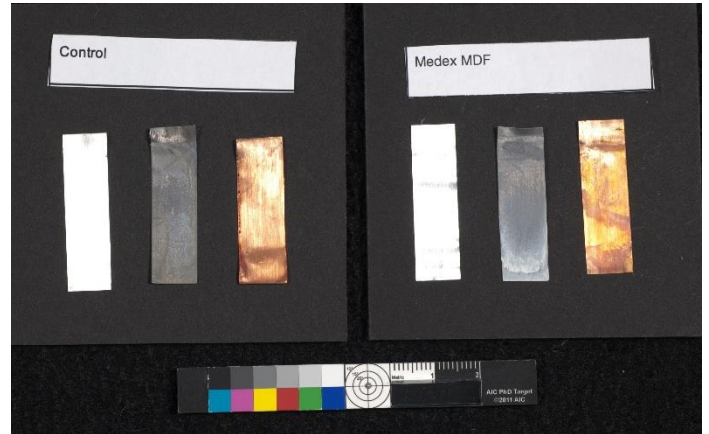
Material:

Medex MDF

Oddy:

Fail

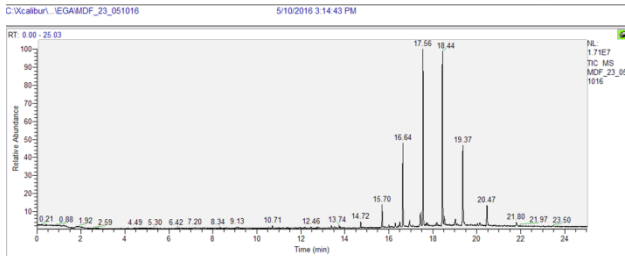
N = 3; measured 3/2016 to 7/2016



Notes: Silver coupon has a yellow haze. Lead coupon has accretions present.

Evolved-Gas Analysis:

EGA reveals the presence of all branched hydrocarbons, which indicate paraffin wax which is present at 1% in Medex MDF wood as an adhesive.



Microchemical Tests:

Azide: **P**

Chromatropic Acid: **F-M**

Iodide/Iodate: **F**