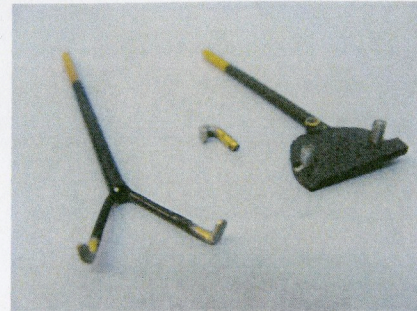
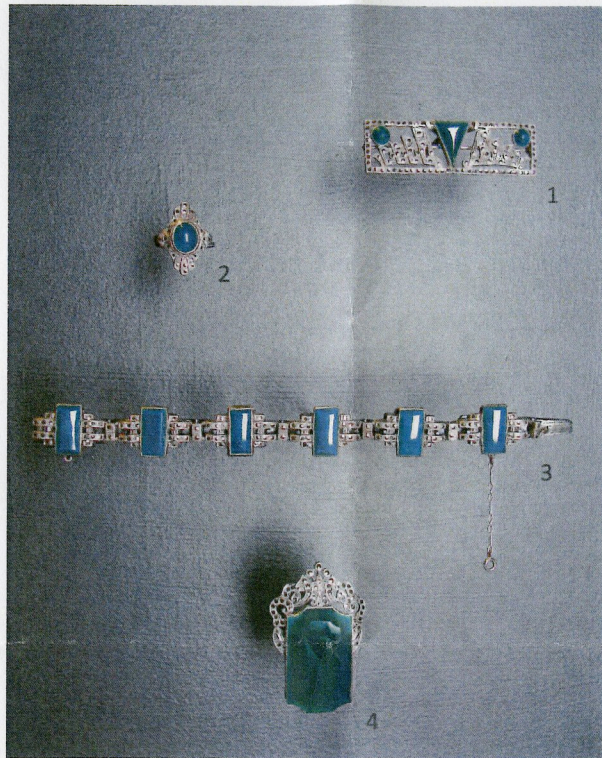
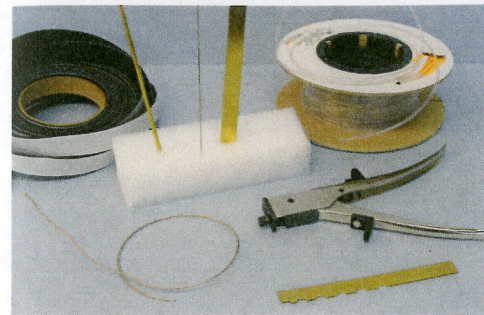


## Projecting Brass Mounts for a Silver and Glass Jewelry Set

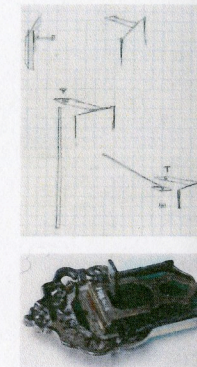
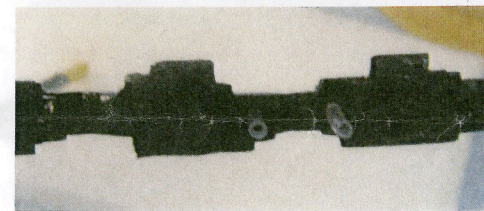


1. The brooch mount is made with a brass v shape that projects out and hooks the object at a 90° angle. The tips of the mount are coated with Plascoat VitroGuard 12.

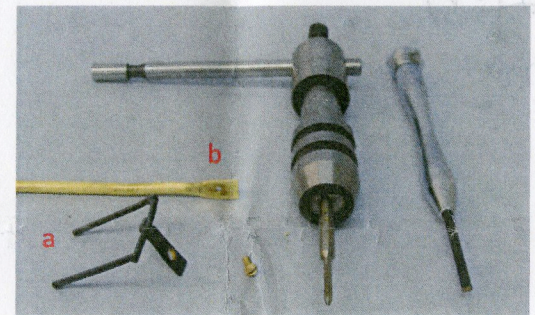
2. The ring mount consists of a brass semicircle soldered to a 3/32" diameter rod. Tiny brass posts are soldered to each side of the semicircle and covered with polyethylene tubing, creating a snug fit. A removable brass latch is made to be inserted into a shallow tube, soldered behind the semicircle thus locking the ring in place.



3. For the bracelet mount, brass stock is cut to match the silhouette of the piece using a nibbling tool. A 1/8" diameter rod is soldered to the back, and 3/64" diameter posts are soldered in multiple places to receive the bracelet. Once in place, snips of firm fitting polyethylene tubing are slipped over the posts to secure the object in place.



4. The mount for the shoe clip is constructed in two pieces. The first component is a three-sided shape with a tab (a) that can be inserted when the clip is in its open position. The second component is a rod pounded flat at the end (b), and threaded to receive a micro screw that attaches both pieces together. Image left depicts the shoe clip on its mount in the closed position.



### Threaded Ring Mount

Another example of a ring mount using a modified micro screw and threaded hole.



### Two Piece Sliding Tube Mount

The platinum watch wraps around a piece of curved brass with a hook at one end and a receiving post at the other. The form is soldered to a brass tube and is received by a bent rod mounted to the backboard.



### Acrylic and Brass Combination Mounts

