

Art & Dress: Mounting the Wardrobe of Frida Kahlo



Rachael Lee
Textile Conservation Display Specialist



Frida Kahlo Exhibitions in London

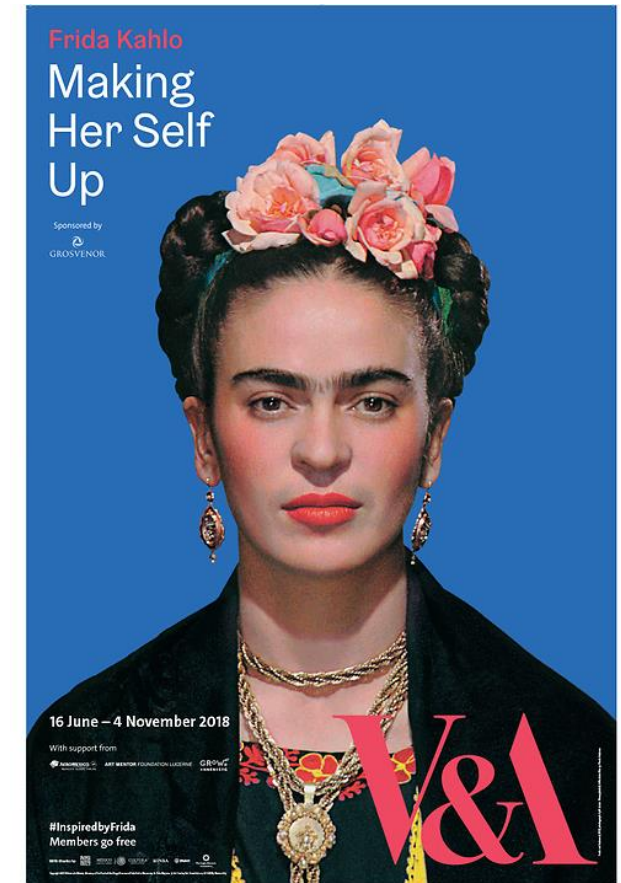
2005



2015



2018



The Blue House - *La Casa Azul*



Frida Kahlo in 'aged 9'.
Photographed by her
father
Guillermo Kahlo, 1919



Exterior & gardens of
Kahlo's family home,
la Casa Azul



Inside the bathroom, 2004



Frida Kahlo: Making Her Self Up



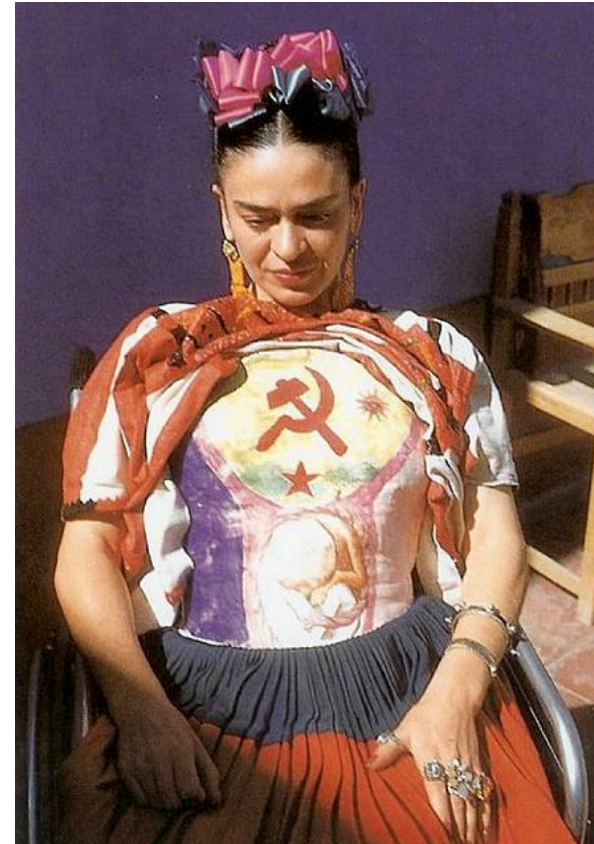
Self-portrait, 1941

The Jacques & Natasha Gelman Collection of 20th Century Mexican Art and the Vergel Foundation



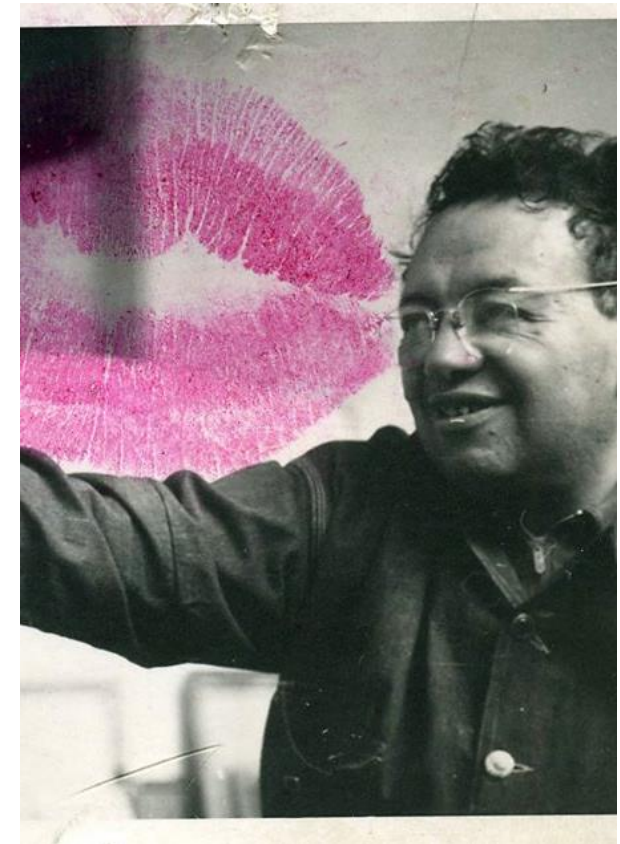
Appearances can be deceiving,
work on paper 1944-54

Museo Frida Kahlo



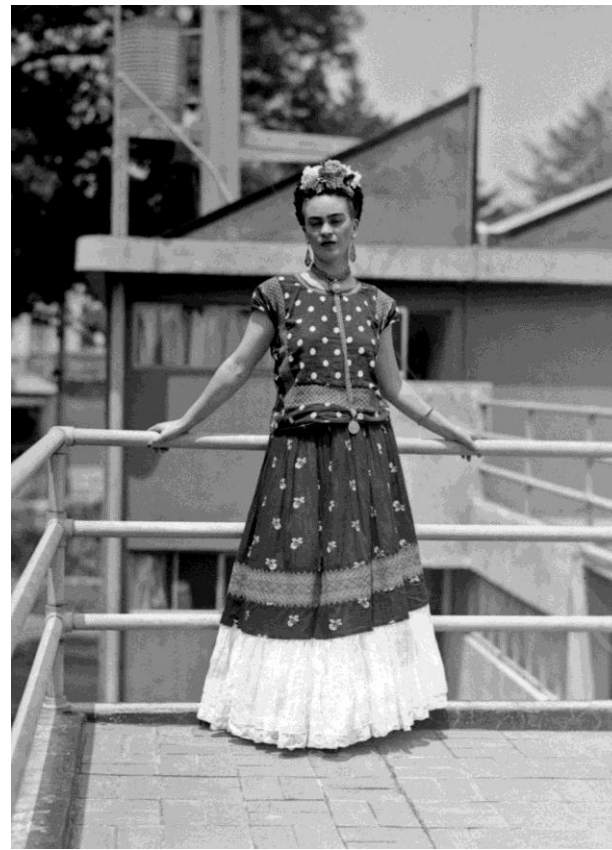
Frida Kahlo lifting her huipil
(tunic) to reveal her plaster
corset, 1951

Photographed by Florence Arquin



Photograph of *Diego Rivera*,
kissed in brightly coloured
lipstick, 1940

Sartorial Choices



Women of the *Isthmus of Tehuantepec*

Frida Kahlo in *Tehuana* dress, 1930s

Assessment of the Collection



Jewellery



Medicines



Textiles



Orthopaedic corsets

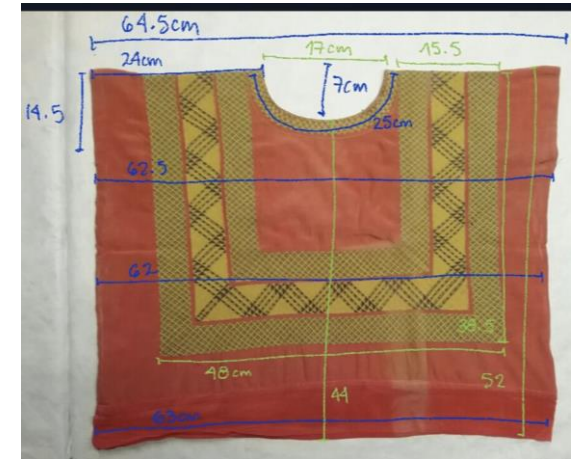
Assessment of the Collection



Detailed measurements taken of full-length skirts



Straps of back-brace



Square-cut *huipil* (tunic)

Details Captured for Publication



Mixture of paint on Pre-Hispanic
Jade beads



Blue paint ingrained in cross-stitch
embroidered *huipil* (tunic)

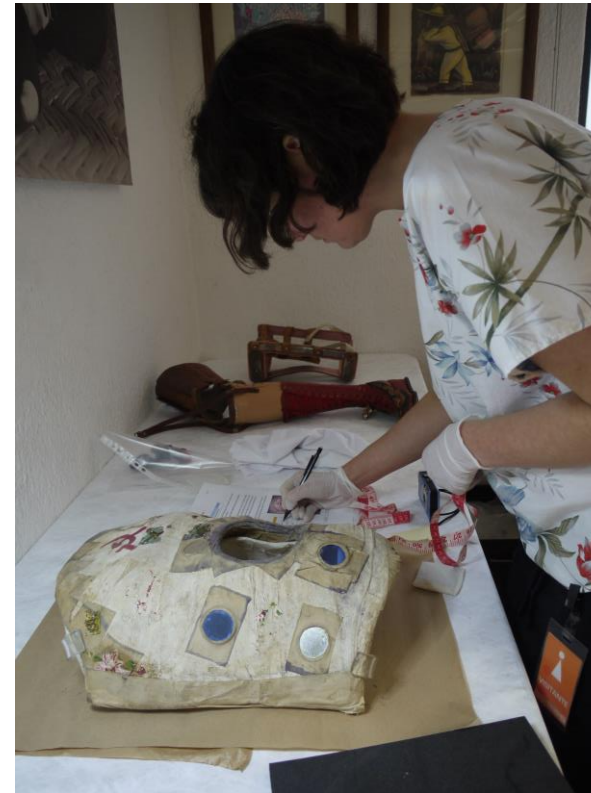


Painted plaster corset decorated
with mirrored discs and graphic
transfers

Mount-making Assessments

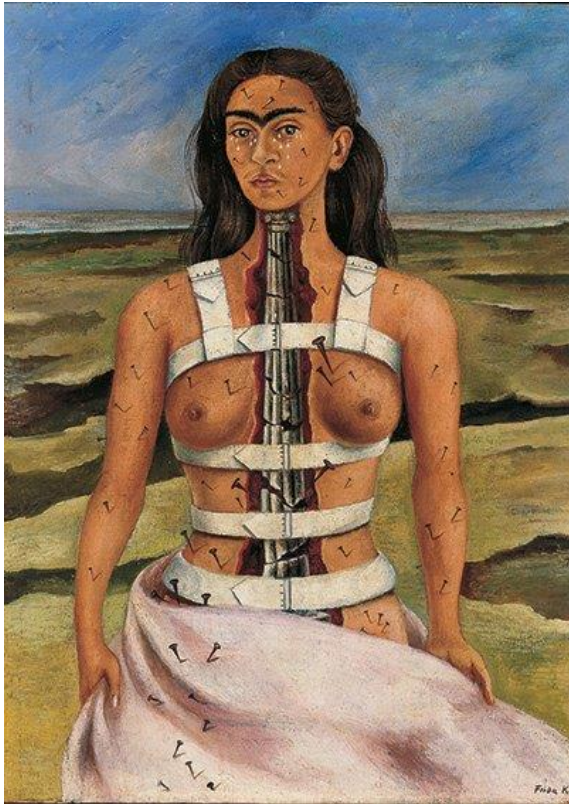


Quick mount solutions for photography



Templating Jewellery

Mount-making at the V&A

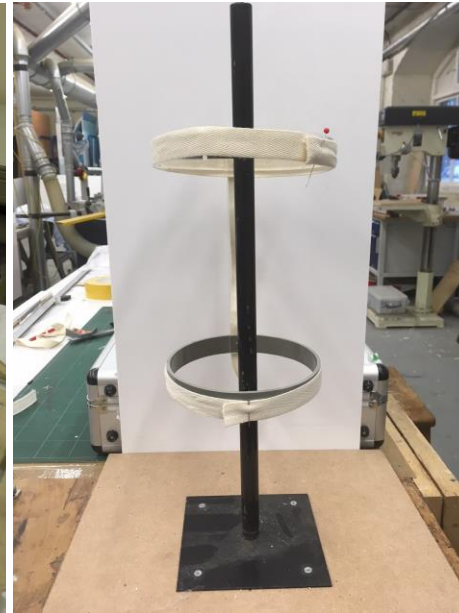


The Broken Column, 1944

Museo Dolores Olmedo Patiño



Templating orthopaedic corset



Adjustable steel collars fastened onto vertical pole



Finished Mounts in *Endurance* Gallery



Orthopaedic Corset 1944, USA



Bespoke 'Bed' showcases

Design Meetings & Mock-ups



Seated mannequin



Jewellery case mock-up

Identity - Persona - Style - Pose



Camera Ready – *Frida Kahlo* was widely sought after by many photographers

Dissecting the Body



Frida with a headdress of black cords
(*la?pe? yīce*) in the patio of the Casa Azul, 1941 (photograph by Florence Arquin).



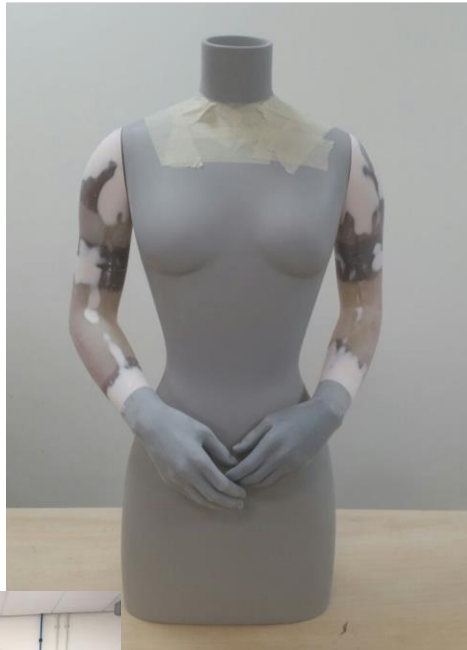
Taking costume pattern & made-up toile



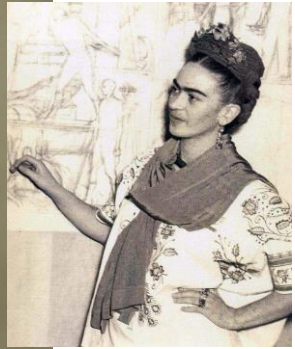
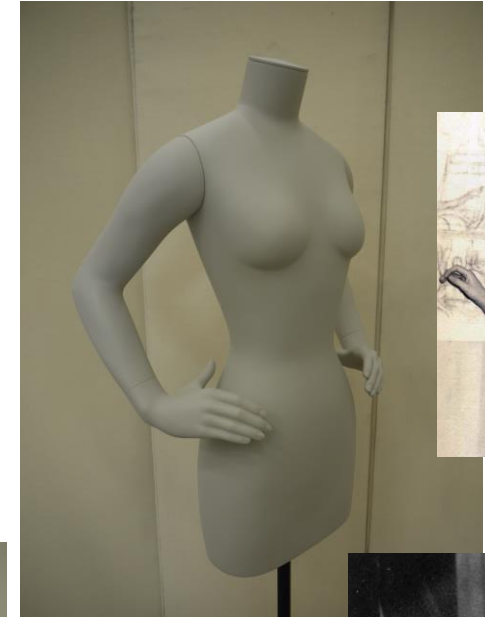
Height: floor to head 158cm

Width 90cm (fuller skirts up to 1m)

Mannequin Development



Straight arms



Hands on hips



Hands together

Pole & base fixing



Head Treatment



Frida Kahlo, 1939
photographed by *Nickolas Muray*



Different design approaches

Digital 3D Render



Initial realistic concept

17 Variations of the Design



Further Design Meetings & Mock-ups

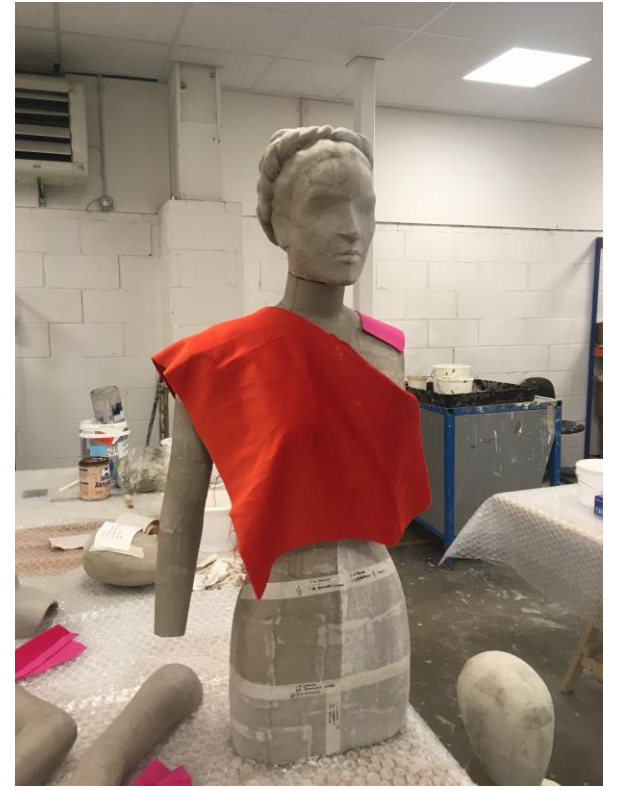
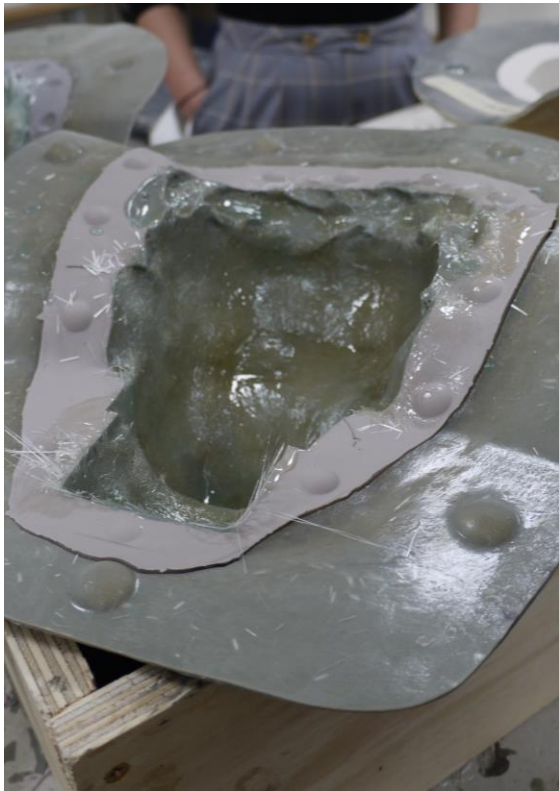


Final Design



Semi-realistic v blown back

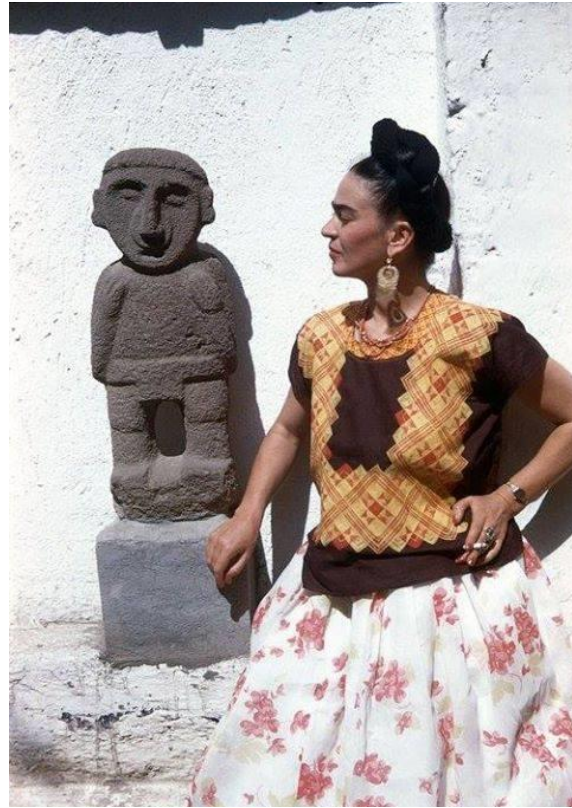
Moulding & Manufacture



Mannequin Finish



Indigenous clay figurines and stone carvings



Application of paper finish



Costume Mounting



The Two Fridas - *Las Dos Fridas*



Art & Dress



Art & Dress



Thank you!

contact: r.lee@vam.ac.uk

<https://www.vam.ac.uk/articles/making-the-frida-kahlo-mannequins>

Special thanks to:

All the staff at Museo Frida Kahlo

Banco de Mexico

All staff on the V&A Project Team

Sophie Manhire

Richard Ashbridge

Lara Flecker

Frances Hartog

Claire Wilcox

Circe Hensetrosa

Tom Scutt

Hannah Brown

Natalia Ferreiro

