



Mounting MOA's new Visible Storage Gallery

Presented by Carl Schlichting for the 2nd annual
Mount Making Forum May 5, 2010

Mount design challenges:

To develop and produce display/storage mounts for a large collection

Examples to be reviewed in this presentation:

- 1 PET sheet mounts
- 2 Stainless spring clips
- 3 Acrylic hemi feet
- 4 Paddle mounts
- 5 Whistle mounts
- 6 Flying hats
- 7 Handle and base
- 8 Black tray
- 9 Classics
- 10 Masks

1 PET Sheet mounts

Translucent sheet supports for Shadow puppets

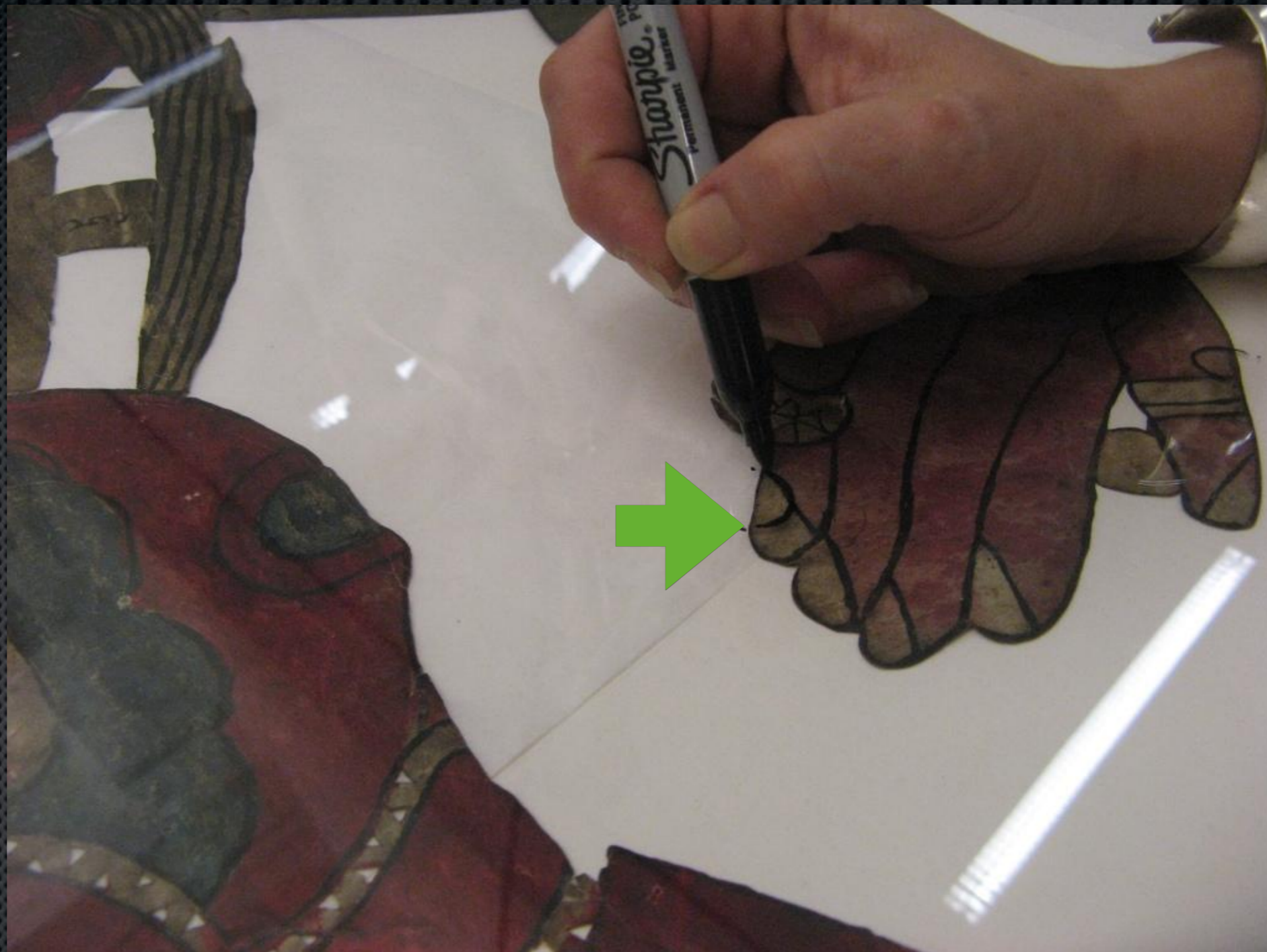
shadow effect



1 PET Sheet Mounts



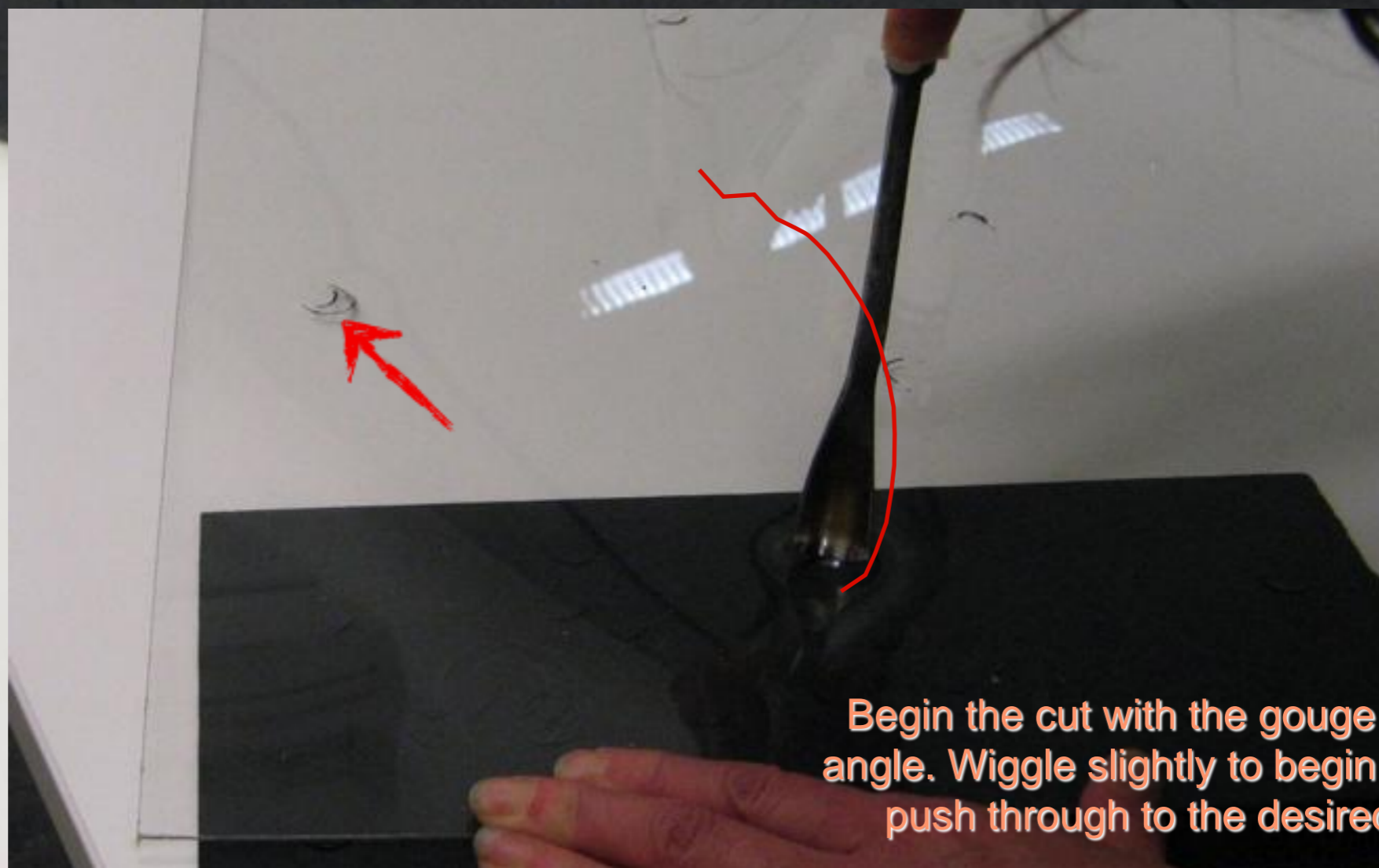
1: Laying out the PET over the object and locating the holder tabs



1 PET Sheet Mounts

Cutting the fingernail clips in PET

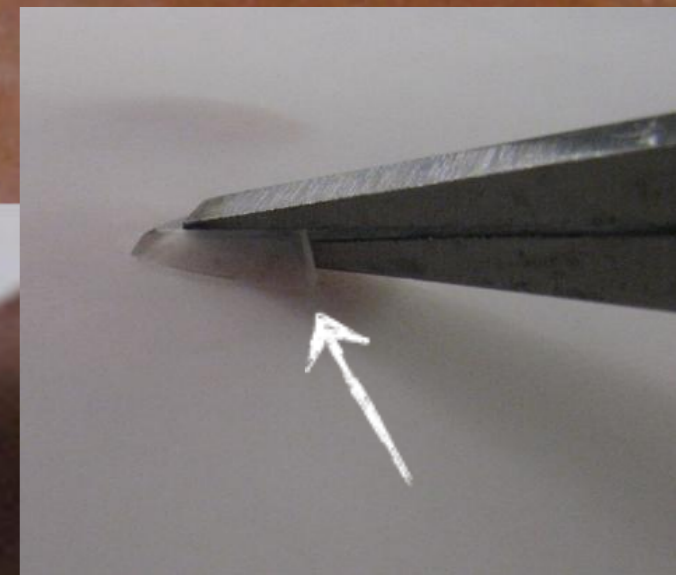
Cut over heavy matt board and practice the motion until a clean thumb nail form can be consistently achieved



Begin the cut with the gouge at a steep angle. Wiggle slightly to begin the cut and push through to the desired length.

1 PET Sheet mounts

3: Frosting can be done either with glass bead blasting or non orbital sanding



4: Lift and bend the clips to adjust the pressure they will exert on the skins

1 PET Sheet Mounts



5: installation

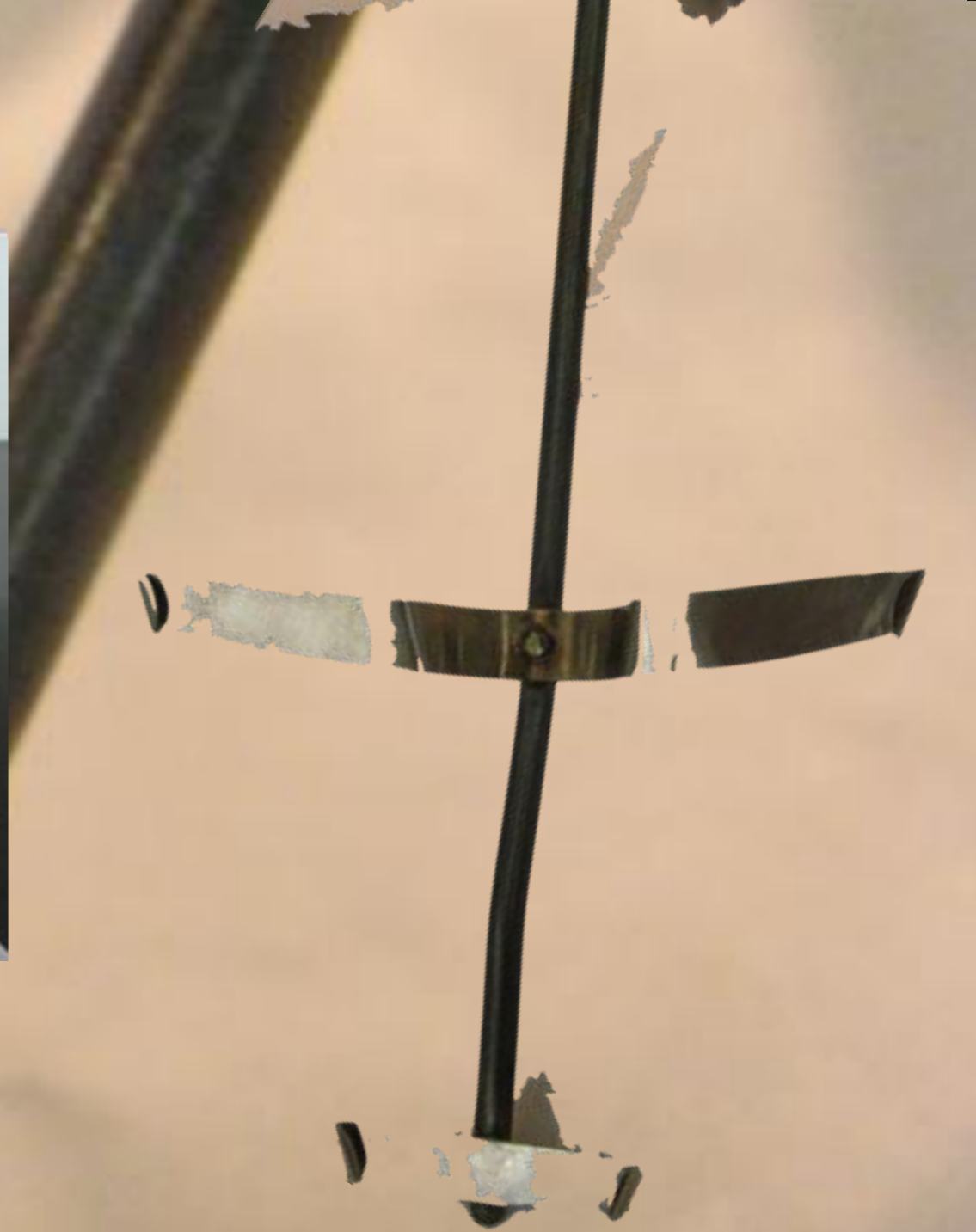
2

Stainless spring clips



stainless
steel clips

2 Stainless spring clips



When attaching spring stainless steel to a heavier stock the solder temperature will damage the temper. Riveting preserves the springiness

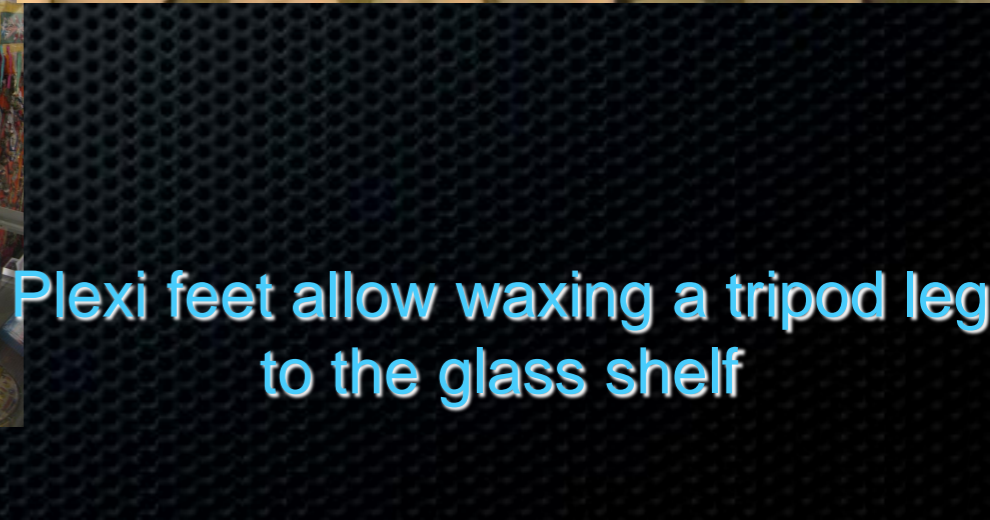
3

Acrylic hemi feet

Waxing tripods to glass shelves



3 Acrylic hemi feet



4 Paddle Mounts



4 Paddle mounts

3 sizes of paddle mount
cores being prepared

drilled core
released with
air pressure



water as
drilling
lubricant

← bolt inserted for a spindle

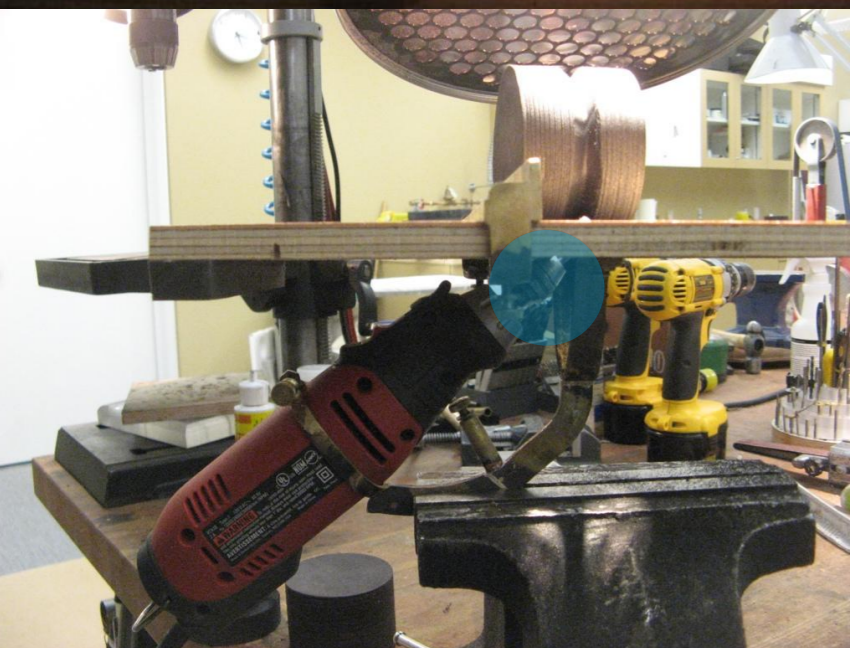
core drills made from gas bottle
sections cut and sharpened

4

Paddle mounts



V grooving foam cores to fit onto oarlock mounts



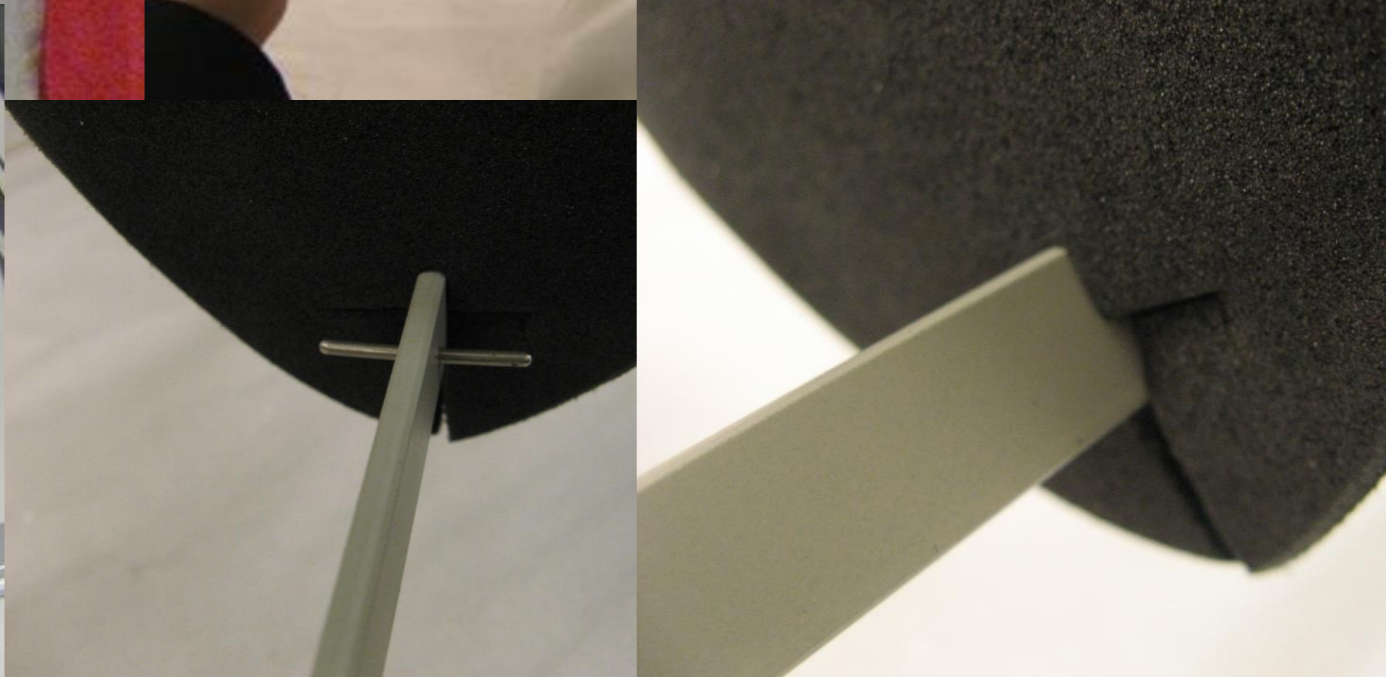
dremel with cylindrical stone mounted under the table jig

oarlock mounts
3 sizes fits all



foam plugs being band sawn or cored to slightly undersized the object shaft

5 Whistle mounts



6 Flying hats



magnetic connection



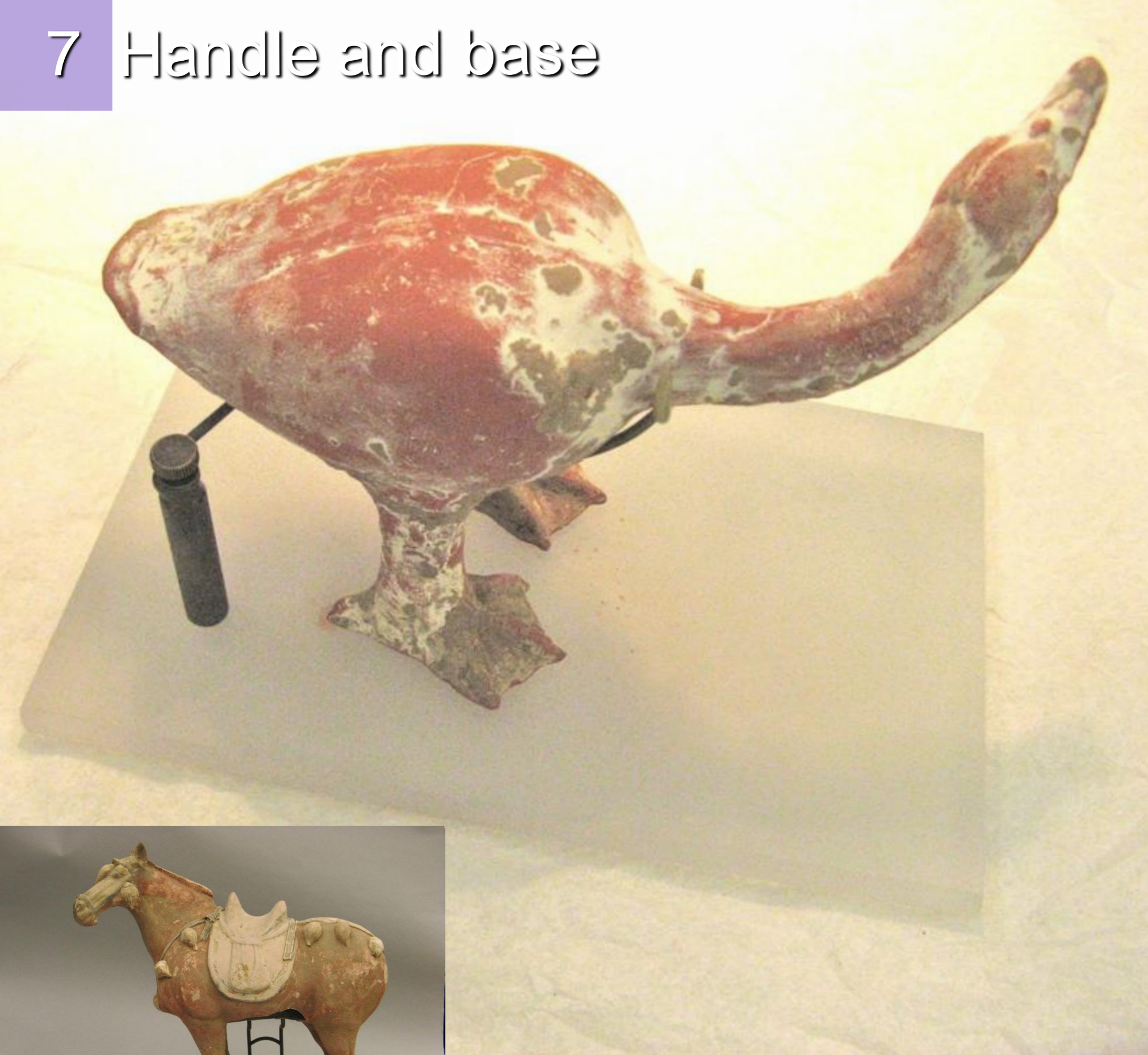
3 or 4 "1/4" carriage bolt soldered onto mag. cup

Panavise ball joint

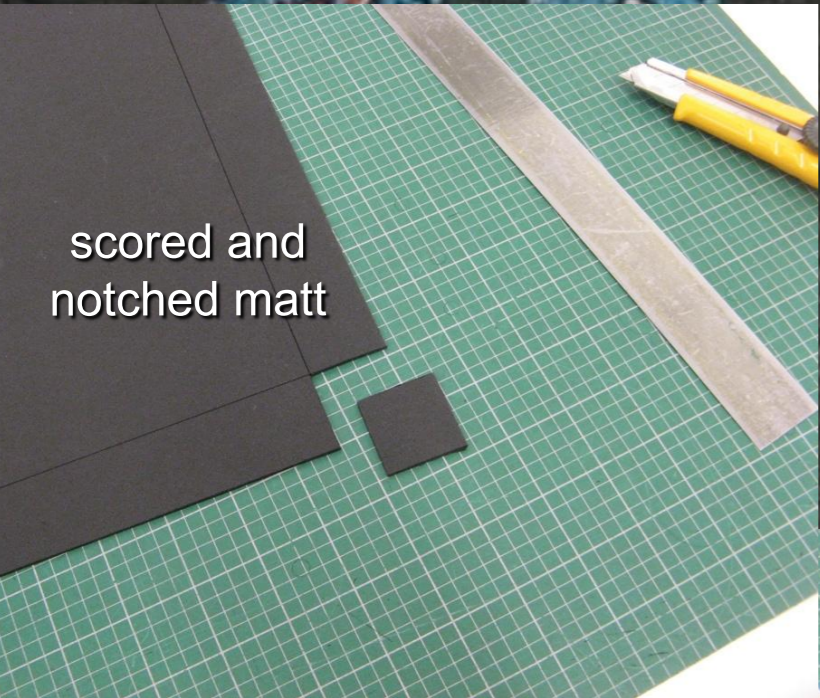
steel pins welded to the plate and pressed into the foam

magnetic cup stuck to steel plate

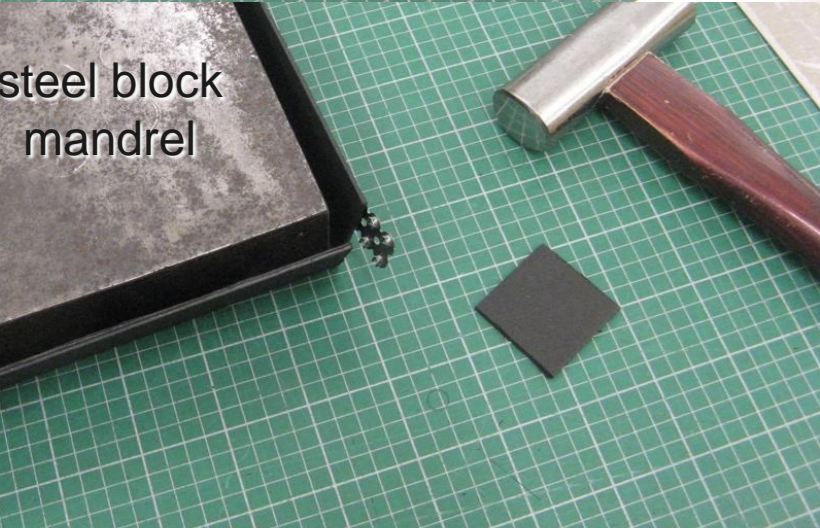
7 Handle and base



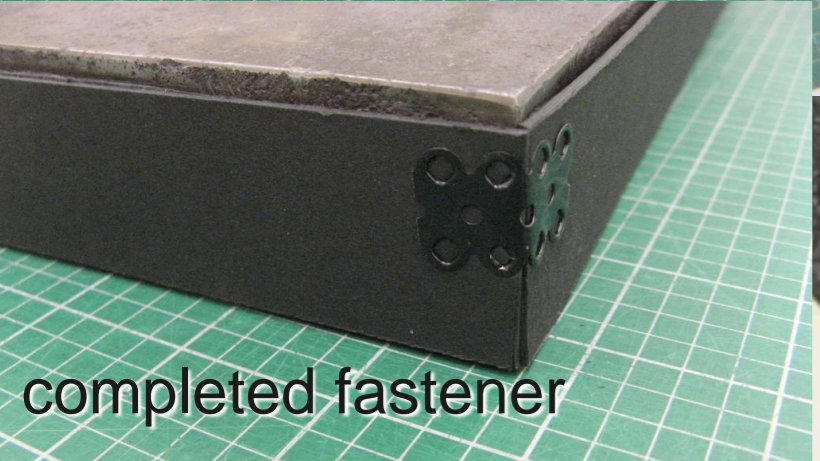
8 Black tray



scored and notched matt



steel block mandrel



completed fastener



ornament
Zulu
K5.77

ornament
Southern Bantu
K5.78

9 Classics



hold down stainless
spring wires and clips





handling/storage/display stand

post with 1/4" thread into plex base

retainer screw

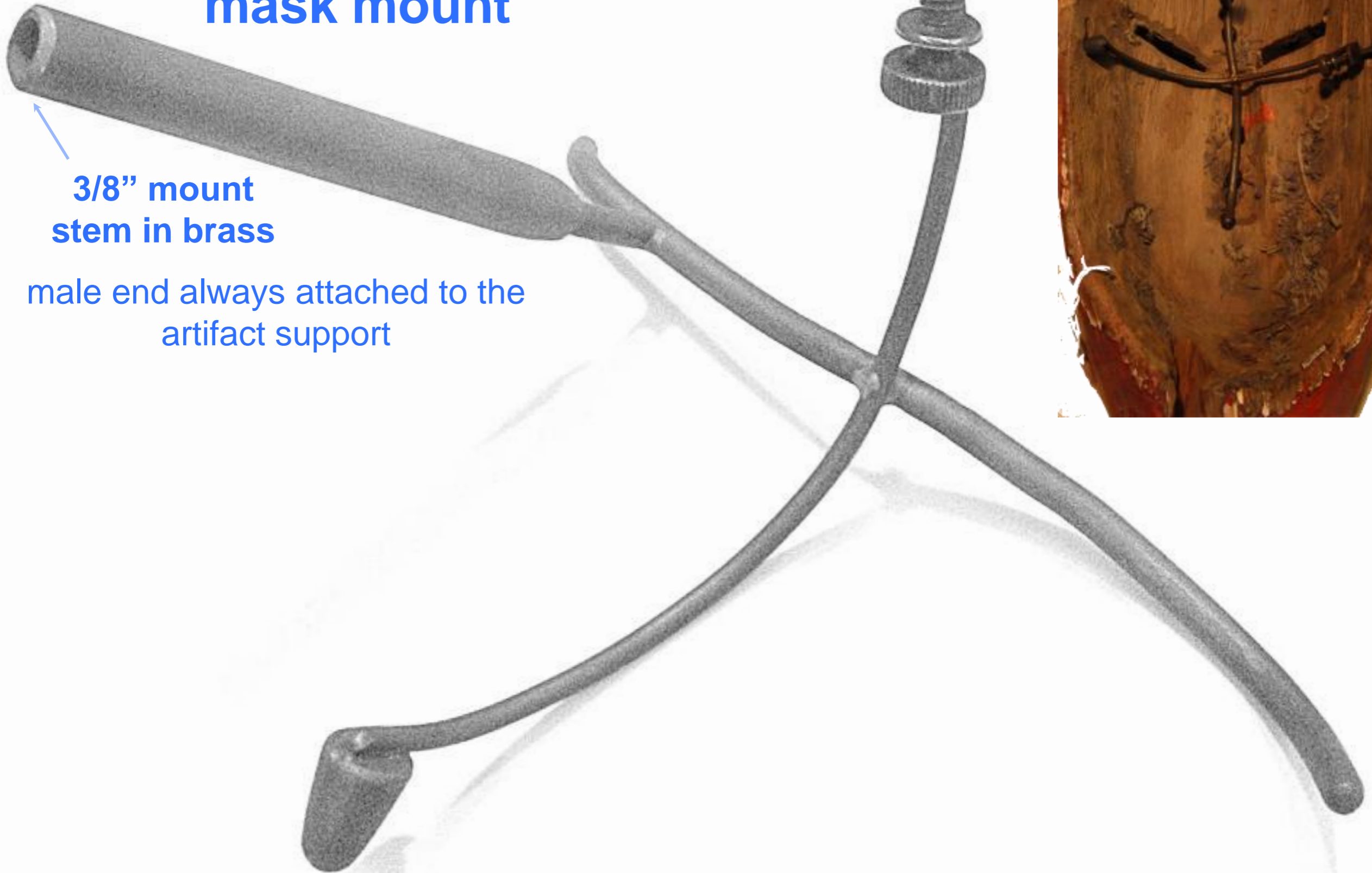
hold down

plexi hemisphere retainer

10 Masks

ground to lock-in shrink tubing →

The standard light weight mask mount



3/8" mount stem in brass

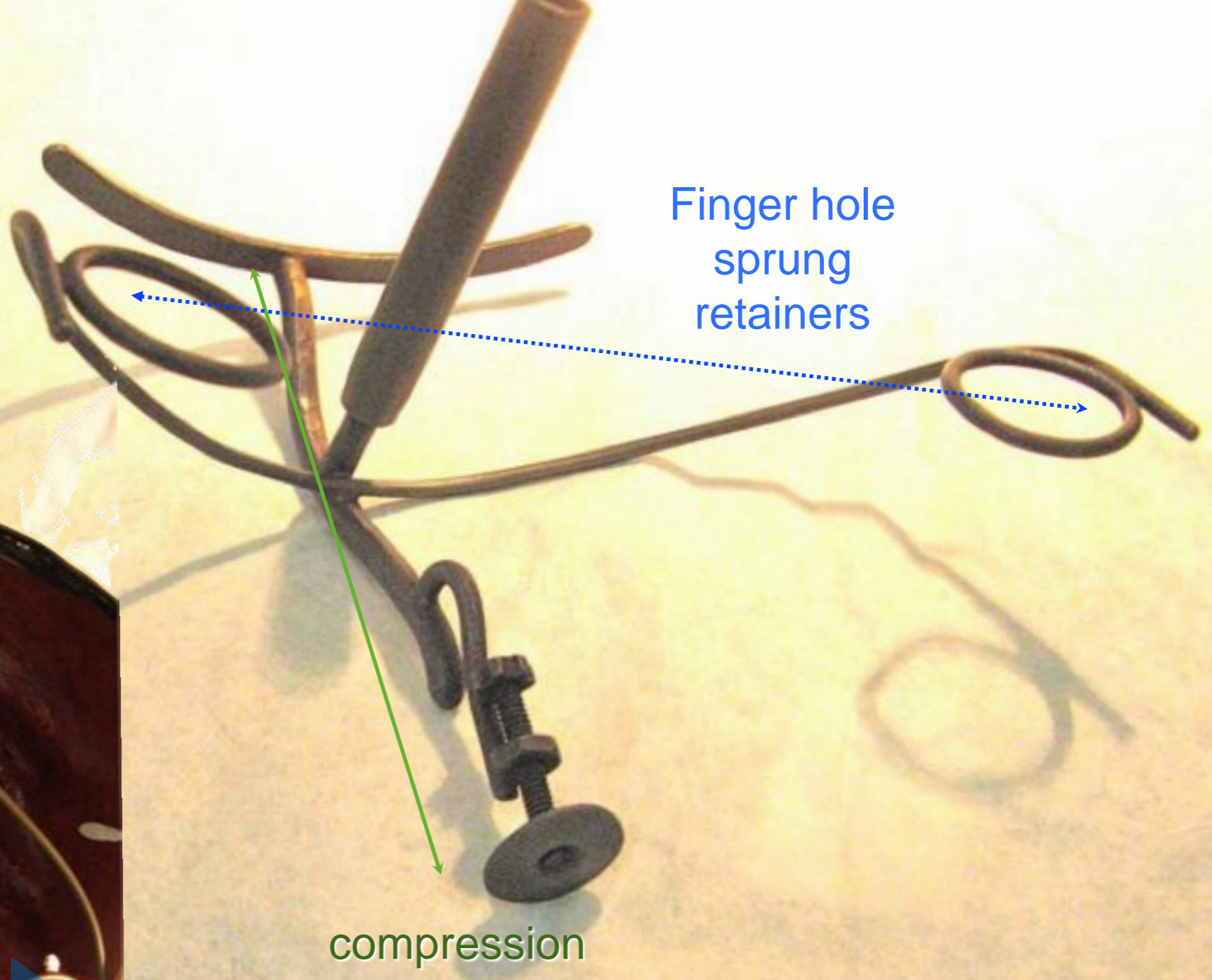
male end always attached to the artifact support



10 Masks



back of the mask



Finger hole sprung retainers

compression

10 Masks

Compressive force utilizing
the slight undercuts



10 Masks

Stainless steel push socket



Credits

Carl Schlichting : master mount maker / contracted head of MOA
mount making
wishes to acknowledge and thank :

his boss:

Heidi Sweringa : conservator/MOA Renewal Project Manager

his crew:

George Grove : puppeteer / animatronics

Lasha Koop Hines : steel sculpture/metals fabricator

Simone Schlichting : silversmith

Josh Dorhety : industrial design grad/ guitar builder

Orina Stonechild : props and set builder

Andreas Schlichting: industrial design grad

Taryn OGorman : silversmith

