

Mountmaking

at

The **Field**
Museum



Exhibit team



ABBOTT HALL
OF CONSERVATION
restoring
EARTH

Pam Ann Kristin Nathan Meg

Mount makers on the team



Top view



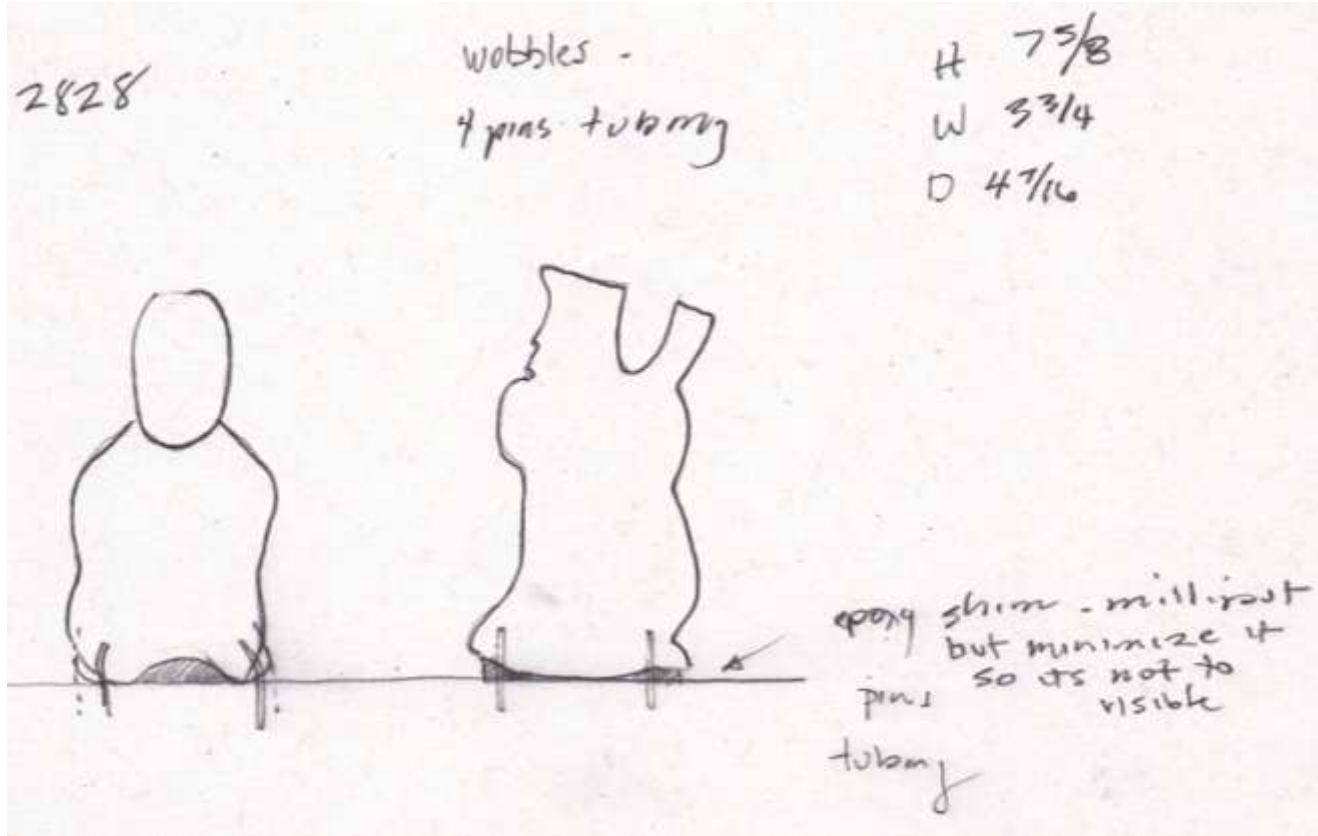
Photos used to design mount



Key view



Side view



Top view



Photos of artifact
taken for mount photo book
(small ceramic chariot)



Side view

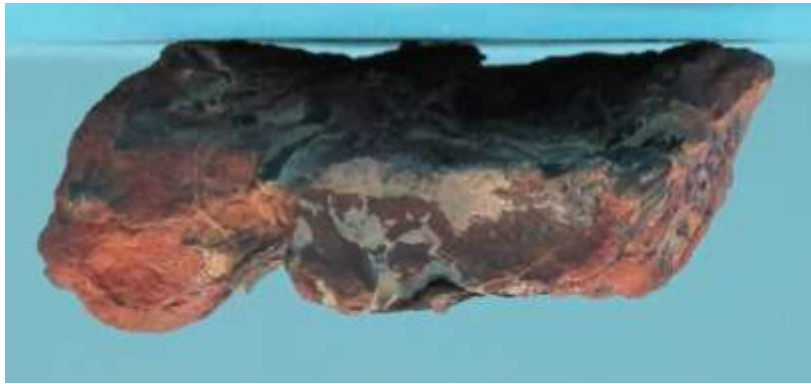


Front view

Photos of Artifact

(as it will be exhibited)

Top
view



Front
view



Side
view



Mount



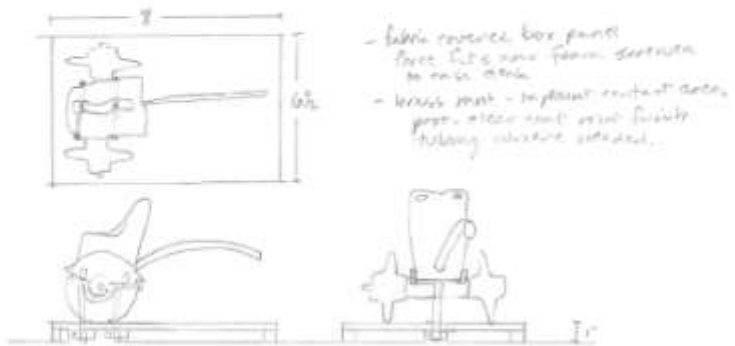
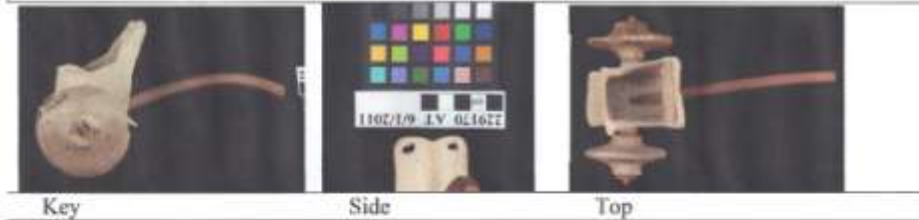
Artifact on mount



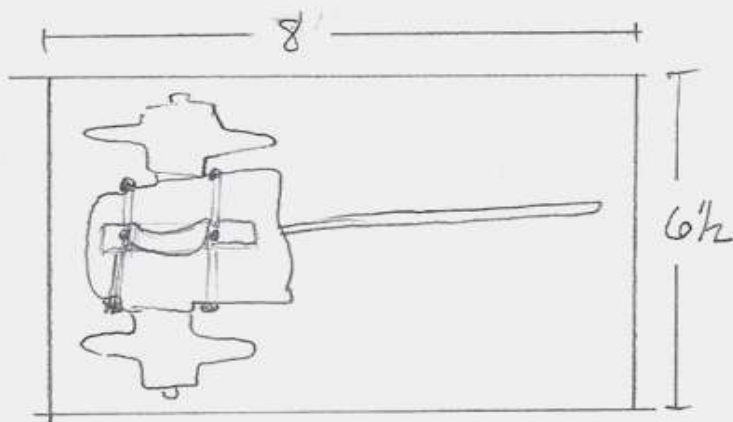
A-3549 Anthro Loan to Spain - FundacionLaCaixa 2011

1924.1497.229170		Inch	Panel Box YES
Description: Model 2-wheeled chariot. Ceramic, wood.		H	1"
Dimensions:		W	8"
Overall Max	cm: H 10 cm L 16 cm W 11.5 cm	D	6-1/2"
	inches: H 4" L 6 1/4" W 4 1/2"		
Treatment: Dust removal (1 hr)			
Display Requirements: secure vitrine; 65-72°F (18-21°C); RH 40-60%; visible light maximum: 15 foot candles (150 lux); UV light: filtered to <5μW/m ² .			Object to travel separate from mount which will be attached to Panel Box.
Mounting Requirements:		Mnt.	21
Standing on deck with brackets and riser under carriage so is balanced and no weight rests on wheels. Wood shaft is separate piece and will need bracket to support front end.			
Jim wants viewed from front, wheels as close to body of cart as possible.			
Shipping Requirements: Foamcore inner box. Urethane top load cavity (lined with polybatting and washed Tyvek). Bottom half of cavity goes up to axels. Top half goes down to axels.			
Mount:			
<u>Armature</u> to raise up cart just enough to relieve stress on axel. But still allow wheels to just touch base. Tubing.			
<u>Paint mnt to match object. Posts can be color of base.</u>			
<u>Box Panel – Angel suede Bone color fabric</u>			

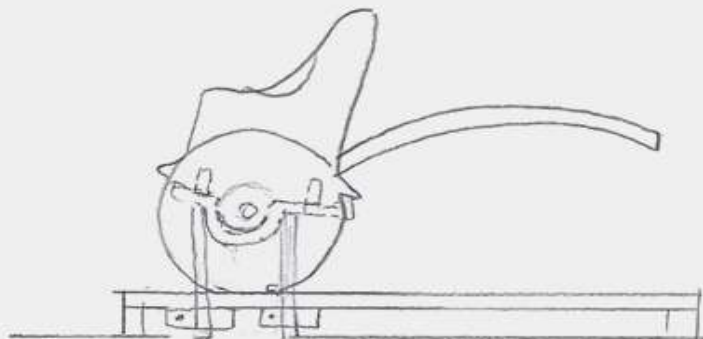
Page from the Mount Design Book



wheels should just barely touch deck -
 just enough to remove weight off axels.



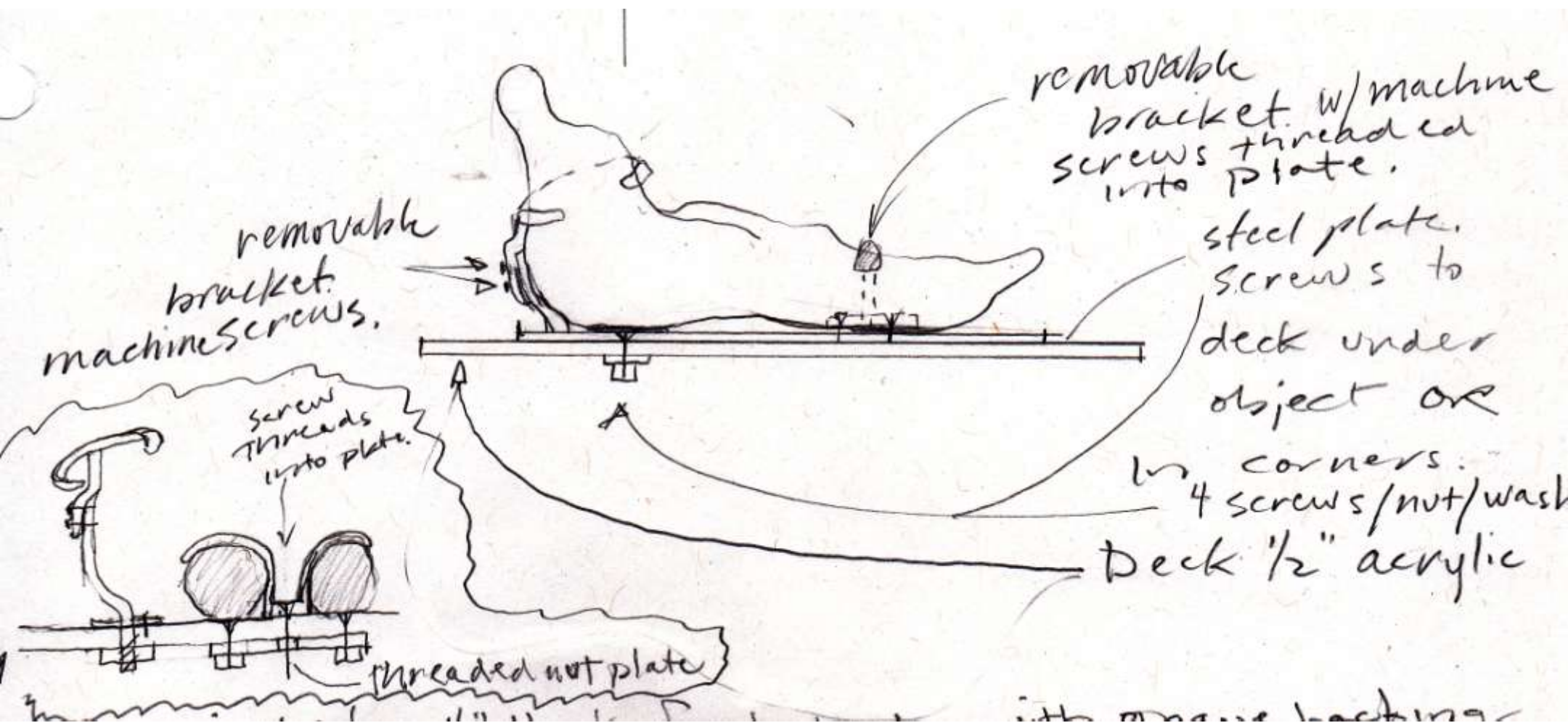
- fabric covered box panel
force fits over foam screwed
to case deck
- brass mnt. - in paint contact areas
post - clear coat wood finish
tubing where needed.



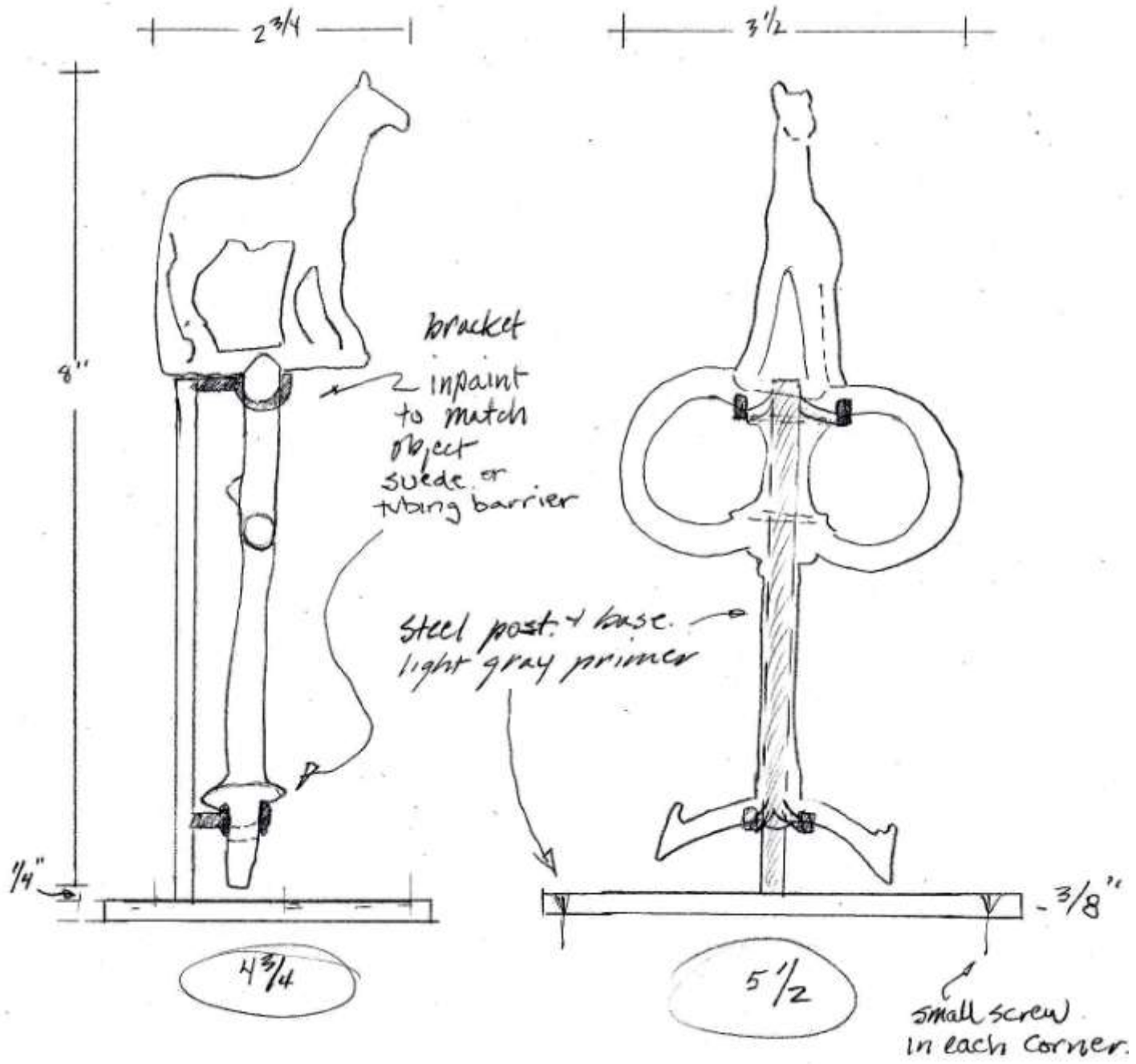
wheels should just barely touch deck.
Just enough to remove weight off axels.

Mammoth
+
Mustardon
Info
Photo Book

CONSERVATION
EXHIBIT
PHOTO BOOK 1 of 2



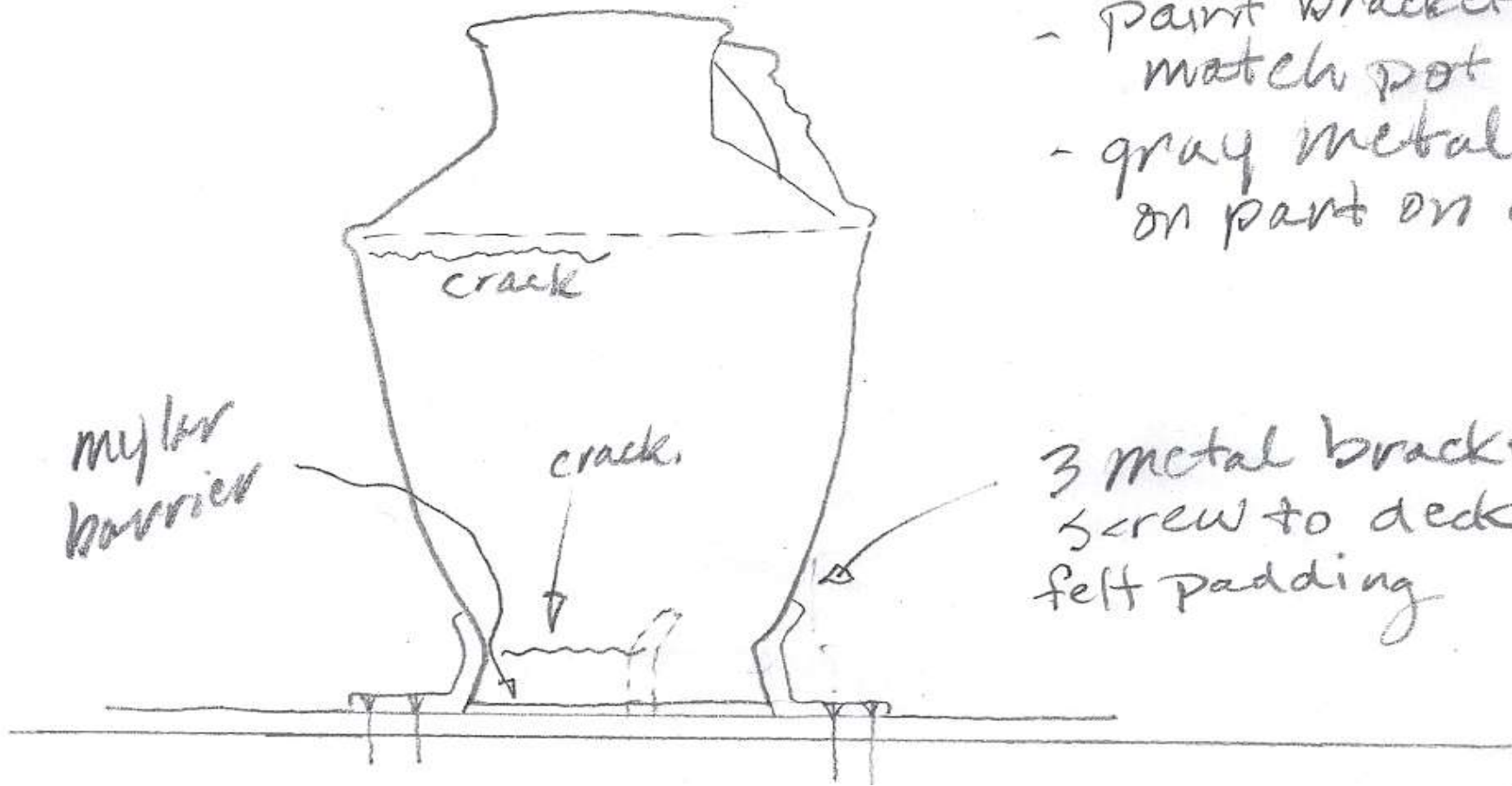
236527



156212

- template needed.

- paint bracket to match pot
- gray metal primer on part on case deck.



3 metal brackets
screw to deck.
felt padding

104342 axe w/ handle (sub 1 + 2)
stone, cane

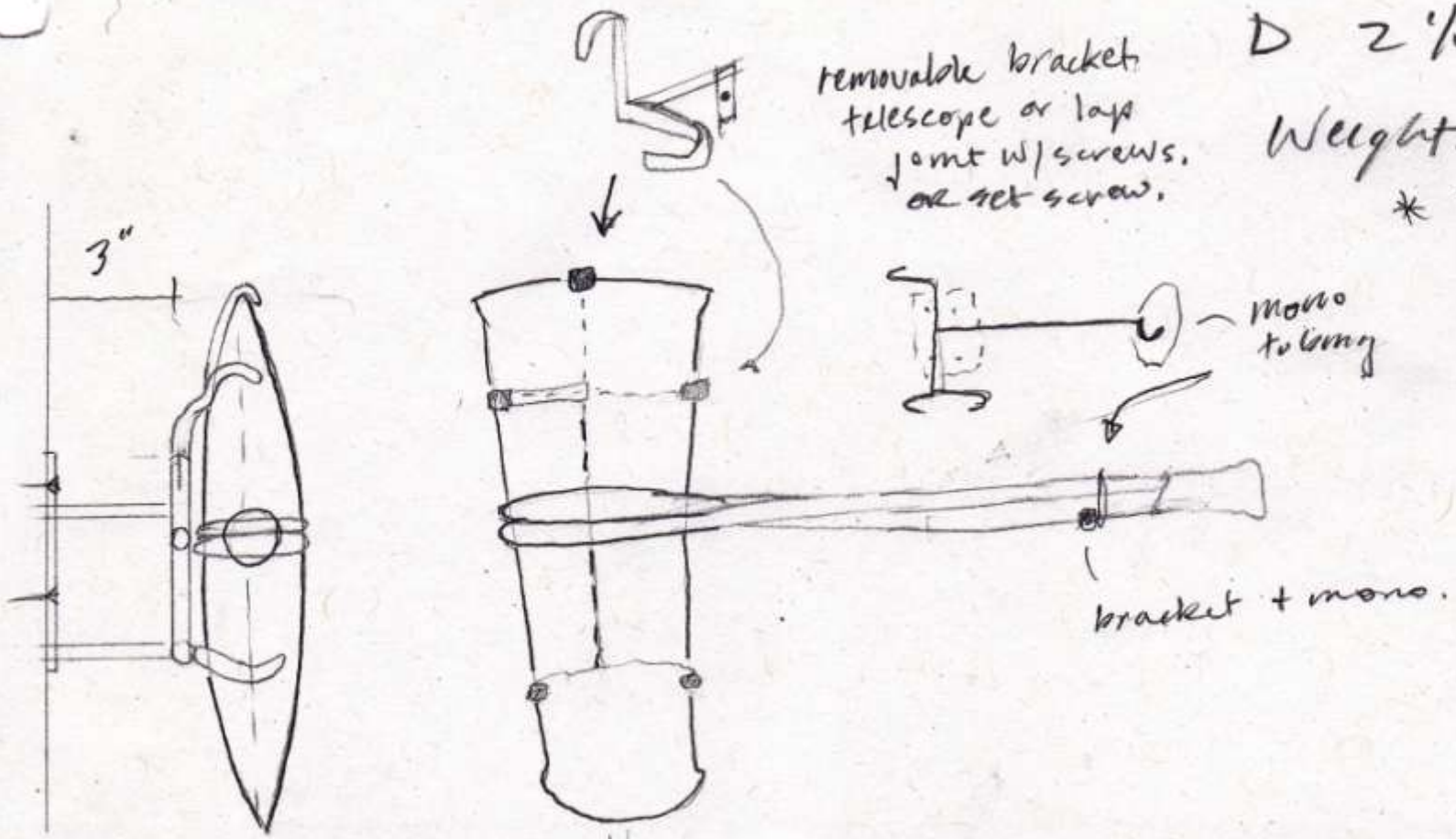
H 10 3/4

W 14 5/8 (stone 2 3/4 only.)

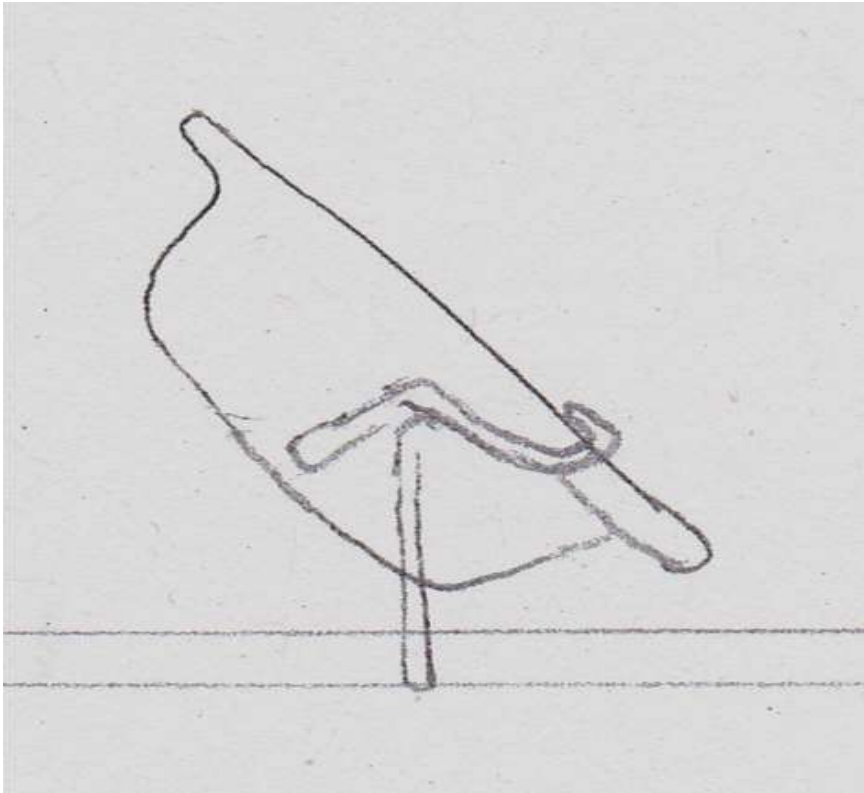
D 2 1/4

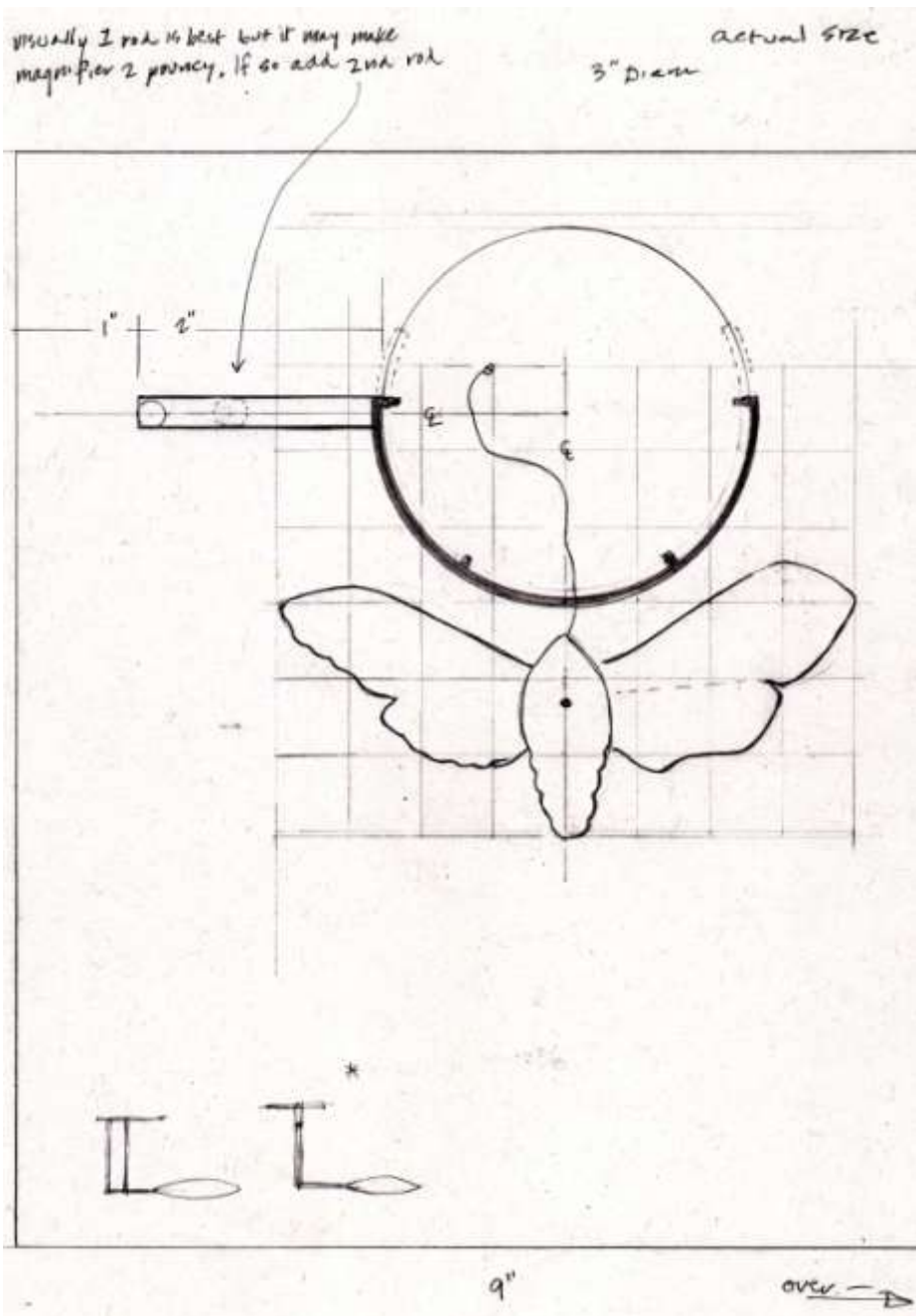
Weight: 5-7 lbs.

* SHOW THIS SIDE
FEWER #'S
WRITTEN ON IT



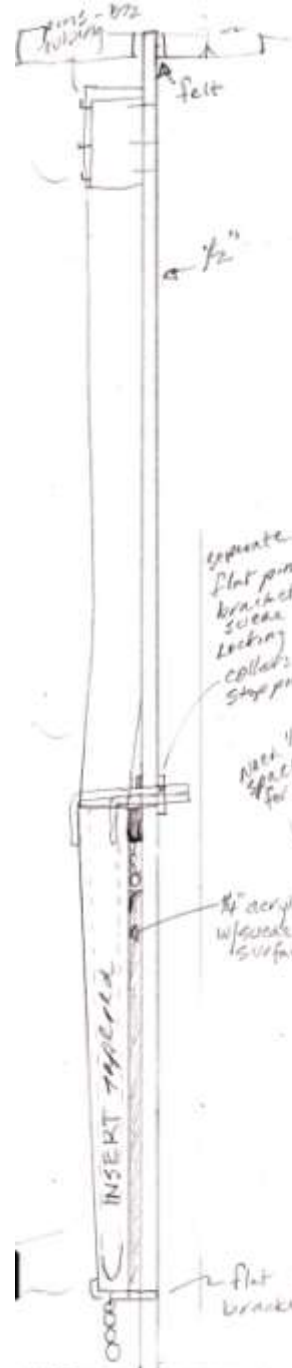
Display on wall or slant panel





Mount drawing and installation photo

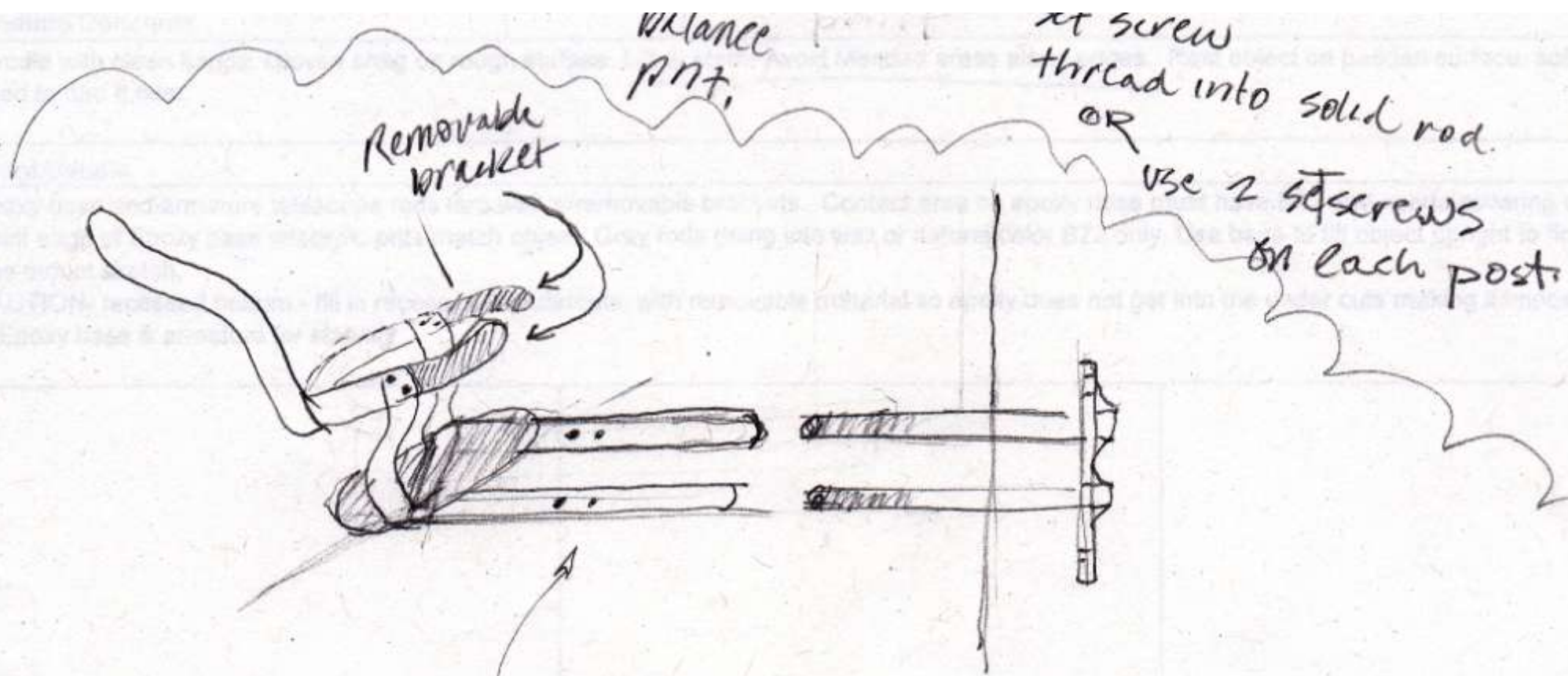




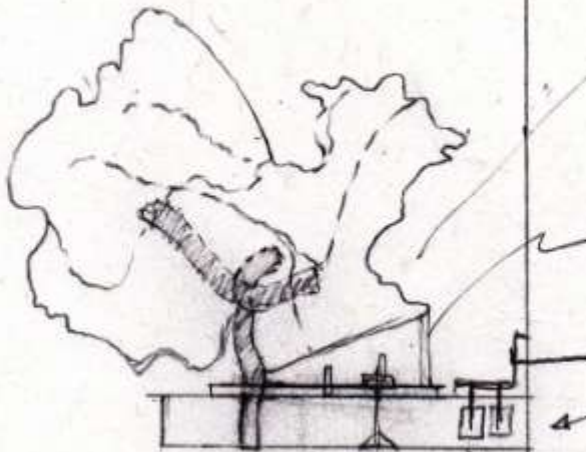
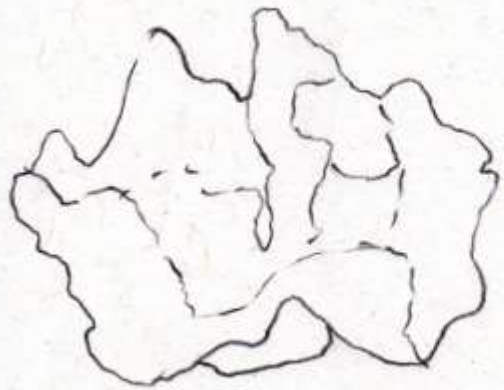
NV.2.2
 opaque panel 1/2" thick
 shaped acrylic anchored to panel w/ pins clear
 peeks skin to black + angel suede black
 flat bracket holding top layer
 flat bracket holding bottom layer
 both suede barrier for friction
 insert plastizote batting (suede skin) fabric - slick + grubby (see sketch) front anyesuede
 flat brass tabs between widest gaps in beads. make long enough so you hold front insert.







- 2 posts to prevent turning
- object is asymmetrically balanced.
- access screws from inside of case



TBD if metal
hold down
bracket will
be needed

epoxy TBD.
cosmetic
to fill in stem

threaded insert
if needed.

bolt or
threaded
insert

→
screw.

paint out steel? TBD.


Steel mount

for Pagoda Coral specimen



Conservation Hall

Mount Information

Section # / Title	2 Social Inventory	Case #		Wish List		 snapshot								
Inventory #	6			ROTATION										
Type	Artifact													
Brief Description	Cofan feather headdresses													
Taxon														
Expanded Descr						<table border="1"> <tr> <td>Height</td> <td>16 in</td> </tr> <tr> <td>Width</td> <td>22-1/2 in</td> </tr> <tr> <td>Depth</td> <td>32 in</td> </tr> <tr> <td>Weight</td> <td></td> </tr> </table>	Height	16 in	Width	22-1/2 in	Depth	32 in	Weight	
Height	16 in													
Width	22-1/2 in													
Depth	32 in													
Weight														
Division	Anthropology													
Catalog Number	341925													
Collection Location														
Collection Manager	Christopher Philipp													
Current Location														
EXH Collection Manager														

Stick to face best
White nylon stockings - Cons.
Stocking net - Cotton
Ok. Putting over foam form
aluminum stop under band.



Time rates	Object Total	Mount	Install	Packing	Furn	Associated
	?	70 hrs	2 hrs			5, 6
Case Design	displayed surface	Upright on deck	80% ok.	Display Notes	Note configuration of tassels can change. Need fabric and paint colors	
Rotation Rank	YES	Date Available		Rotation Notes		
	1st	Date Needed				

Handling Concerns

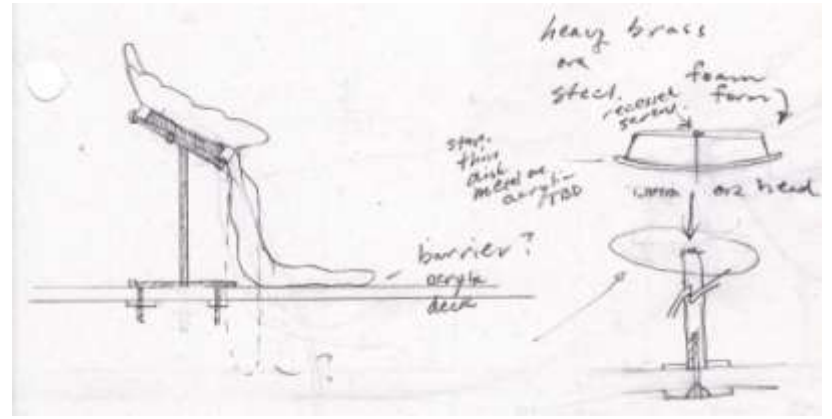
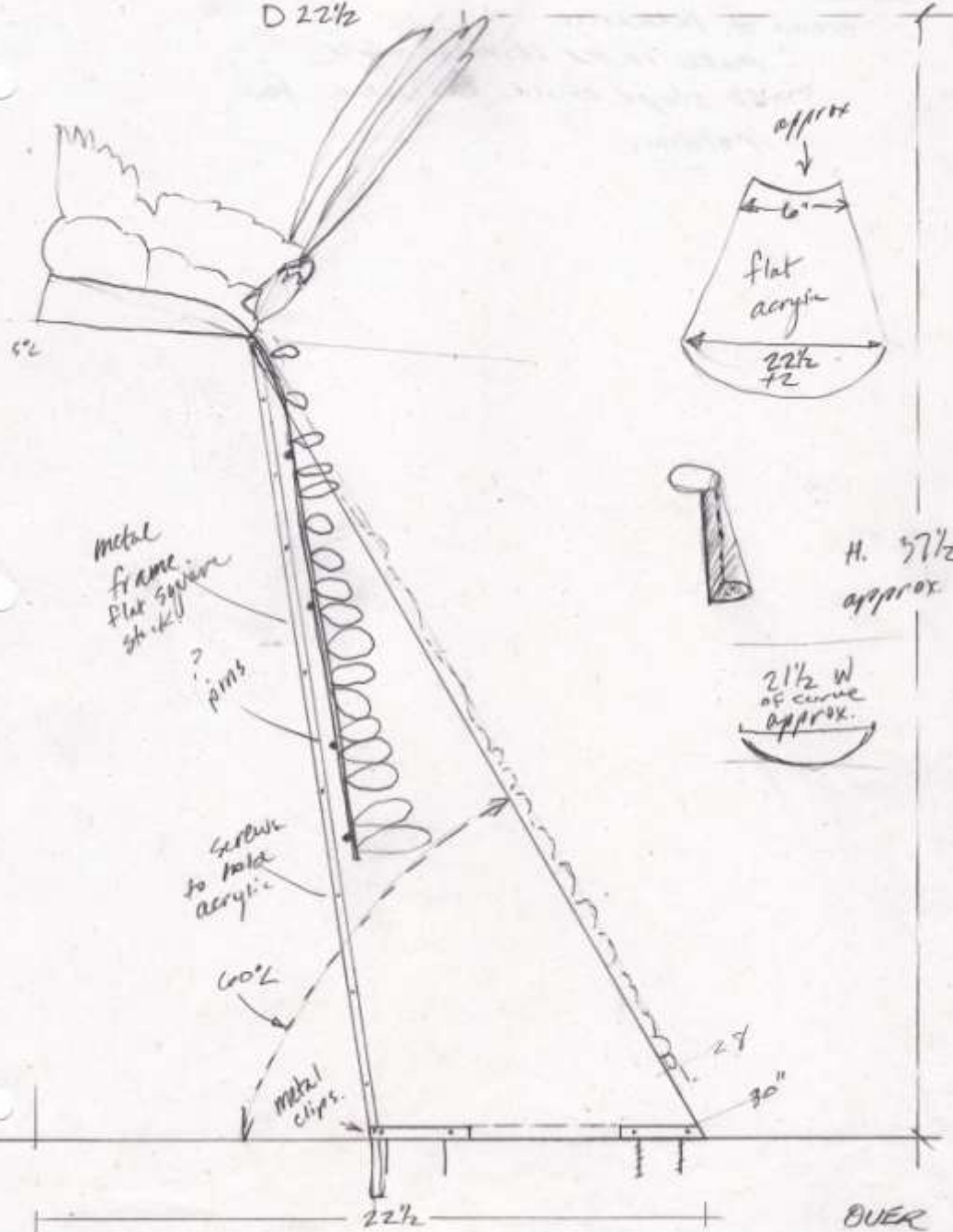
Do not over handle feathers and string tassels.
Make sure head form does not wear on tassel strings on rear of band.
Feather tassels need to be supported.

Mount Details

metal and foam armature - feather tassels will need support, barrier on metal where in contact with object.
SEE MOUNT SKETCH IN NOTE BOOK FOR MORE ACCURATE DIMS.
FABRIC & Paint COLOR TYPE NEEDS TESTING NOT UNLESS WE USE WHAT IS ALREADY TESTED

Robert,
Merrilee wants
to make sure
feathers + strings
are stable before
confirming this
can go more upright.
she prefers - how it is in
the photo book.
Tam
I would need to
do a proto type to
see if it can do this
is correct.

Approx Diam H. 37 1/2 W 21 1/2 D 22 1/2 4/15/2010 3" = 1" scale

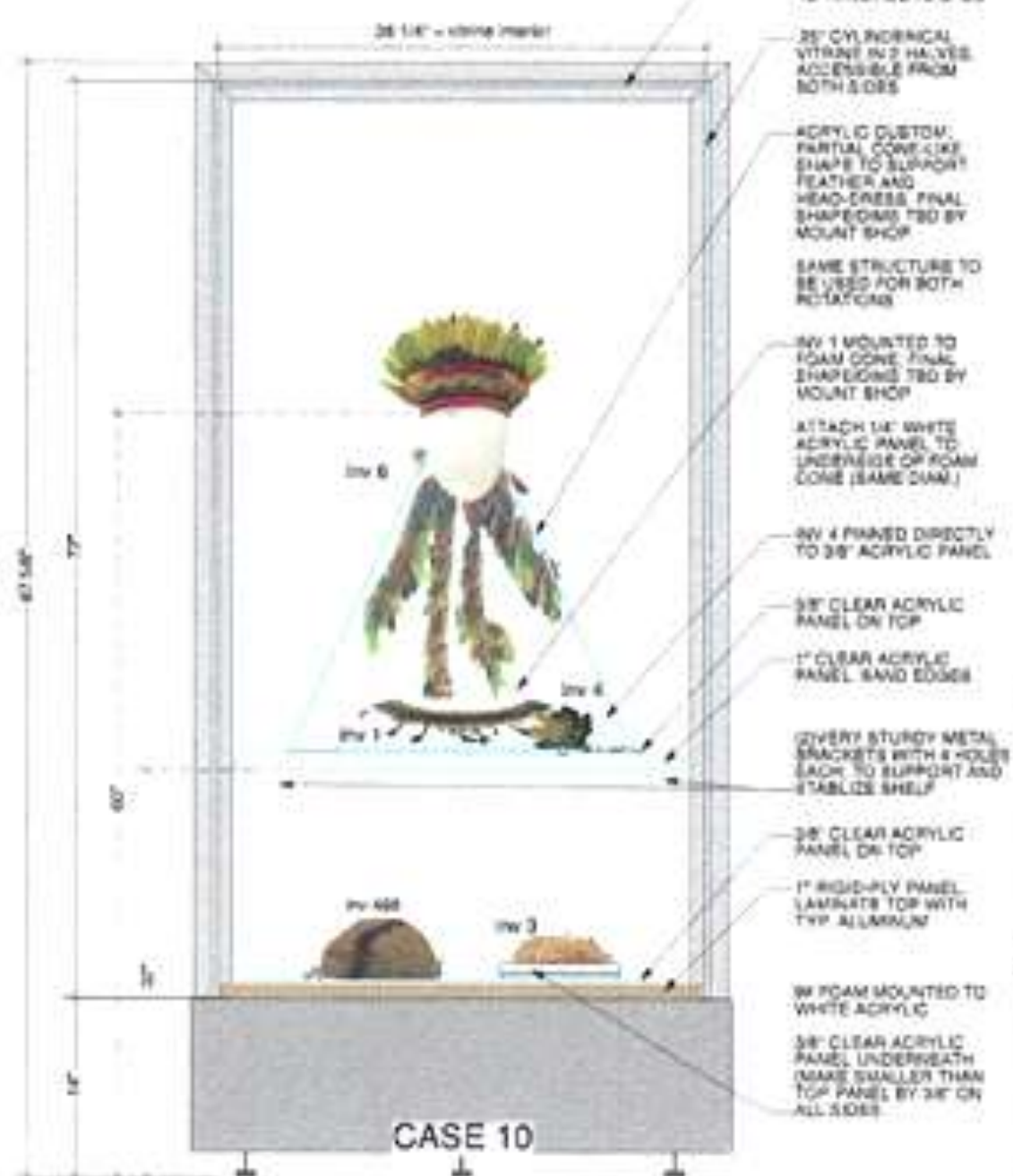


2 different mnt sketches



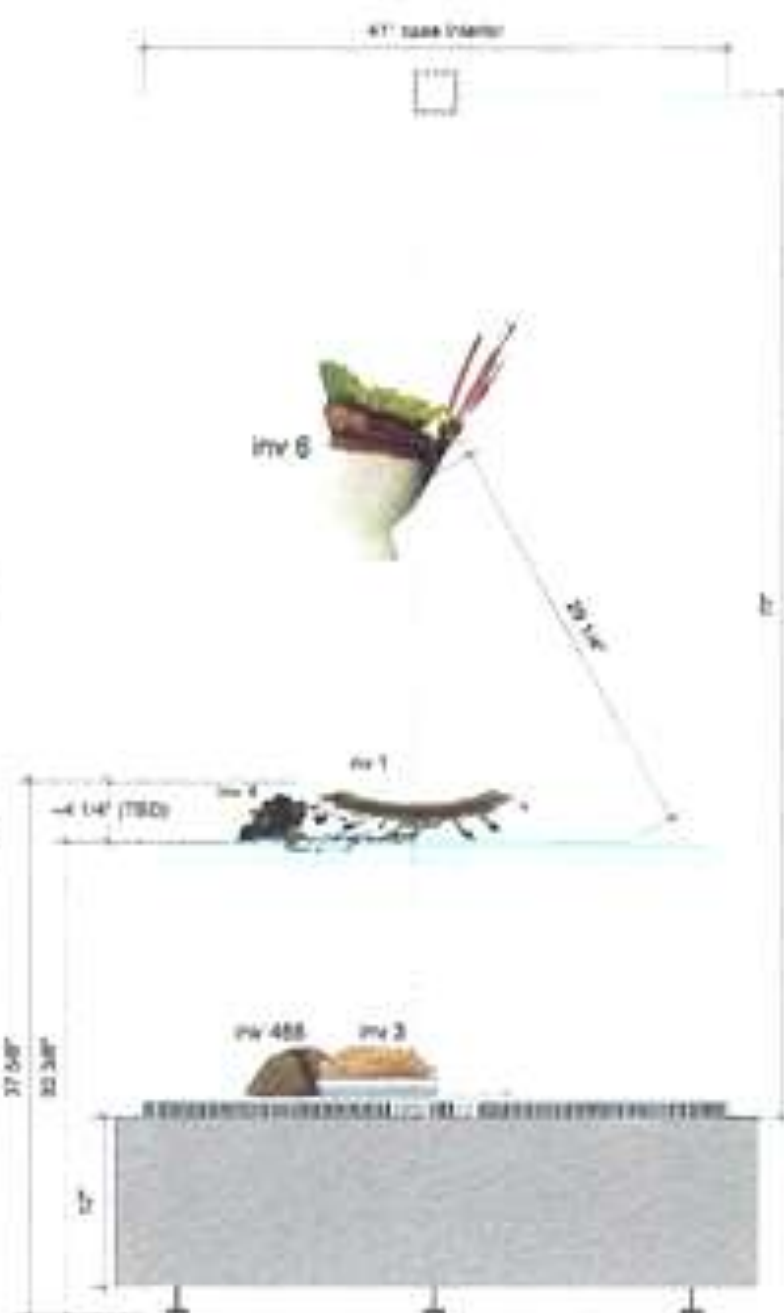
Storage mnt





FRONT ELEVATION

Scale: 1 1/2" = 1'-0"



SIDE ELEVATION

Scale: 1 1/2" = 1'-0"

Artifacts are moved to the Mount shop vault / clean work area



Mount shop welding areas

Oxy/acetylene, Tig, and Mig



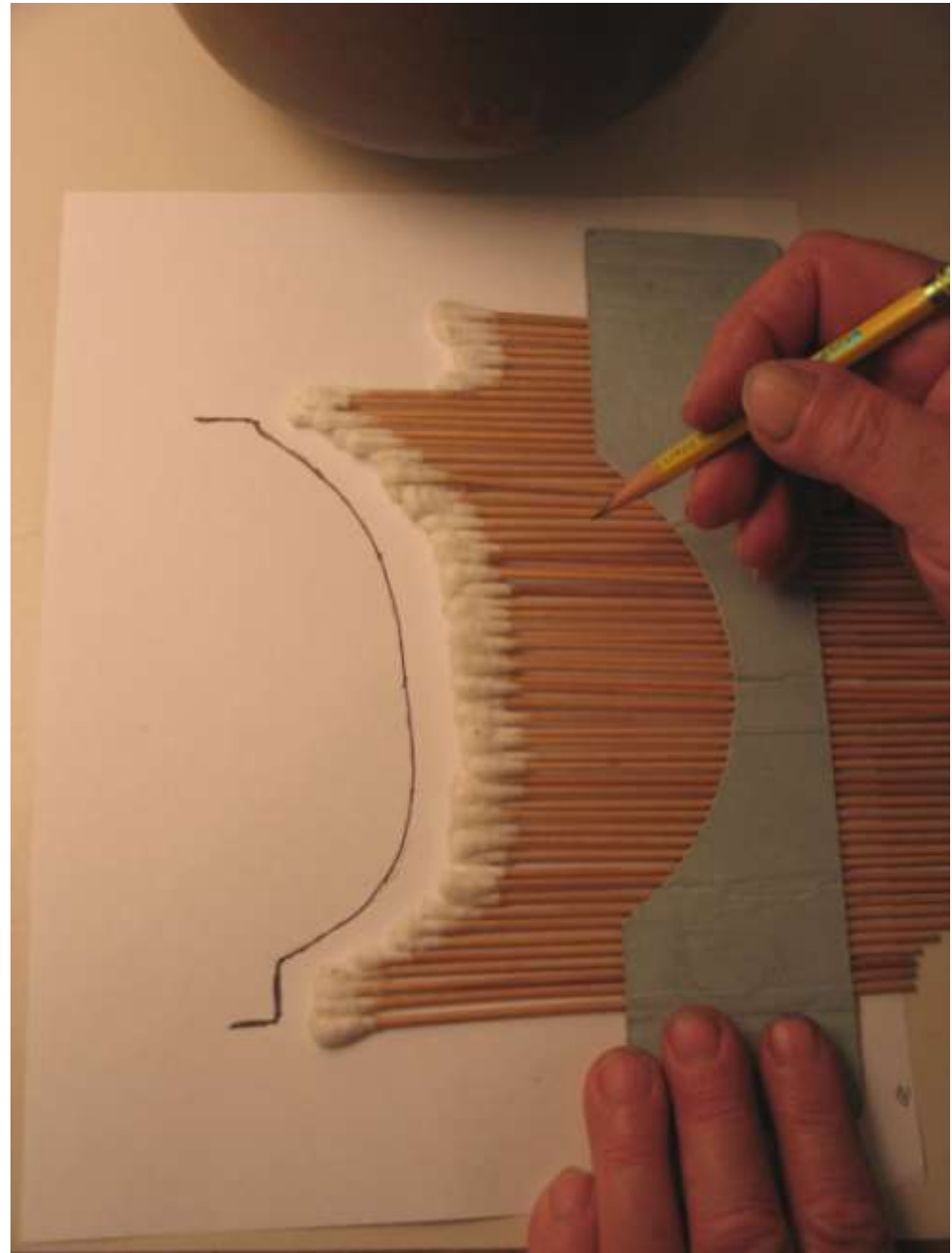
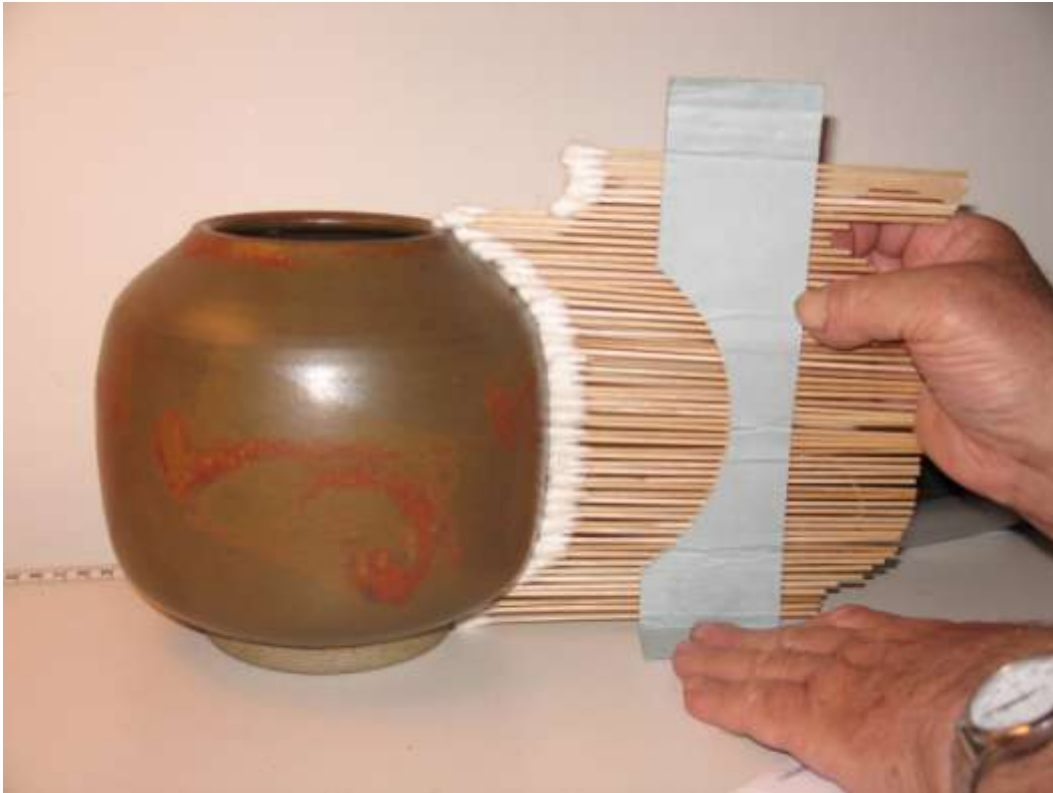
Mount Shop Fabrication Area



Cut,
Saw,
Sand,
File,
and
Drill



Shape finder used to
make templates
for mounts



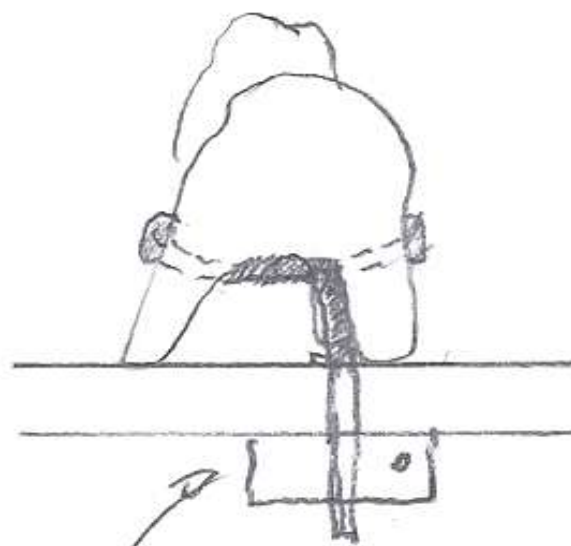
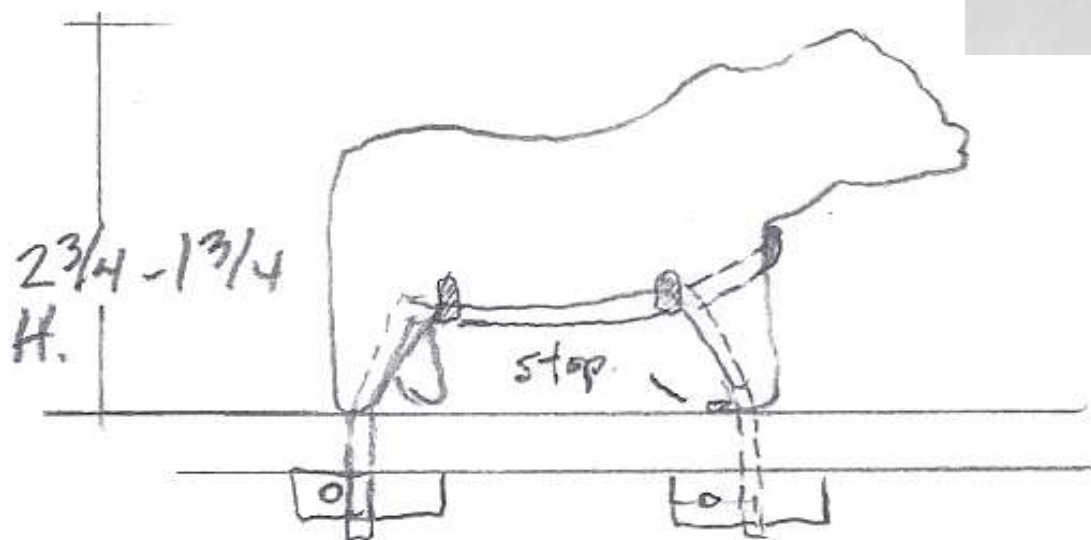
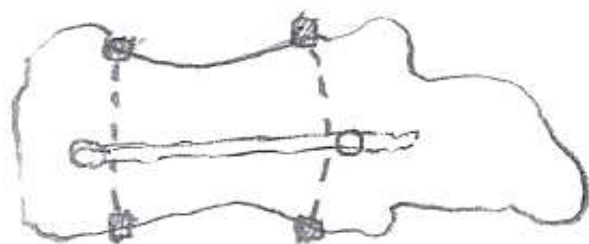




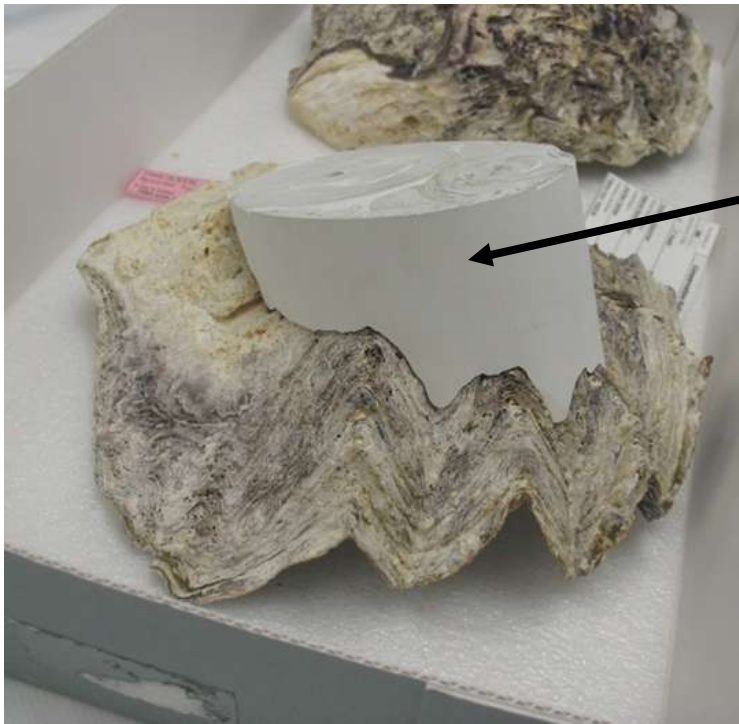
16

SMNA
266768

266768



locking collar



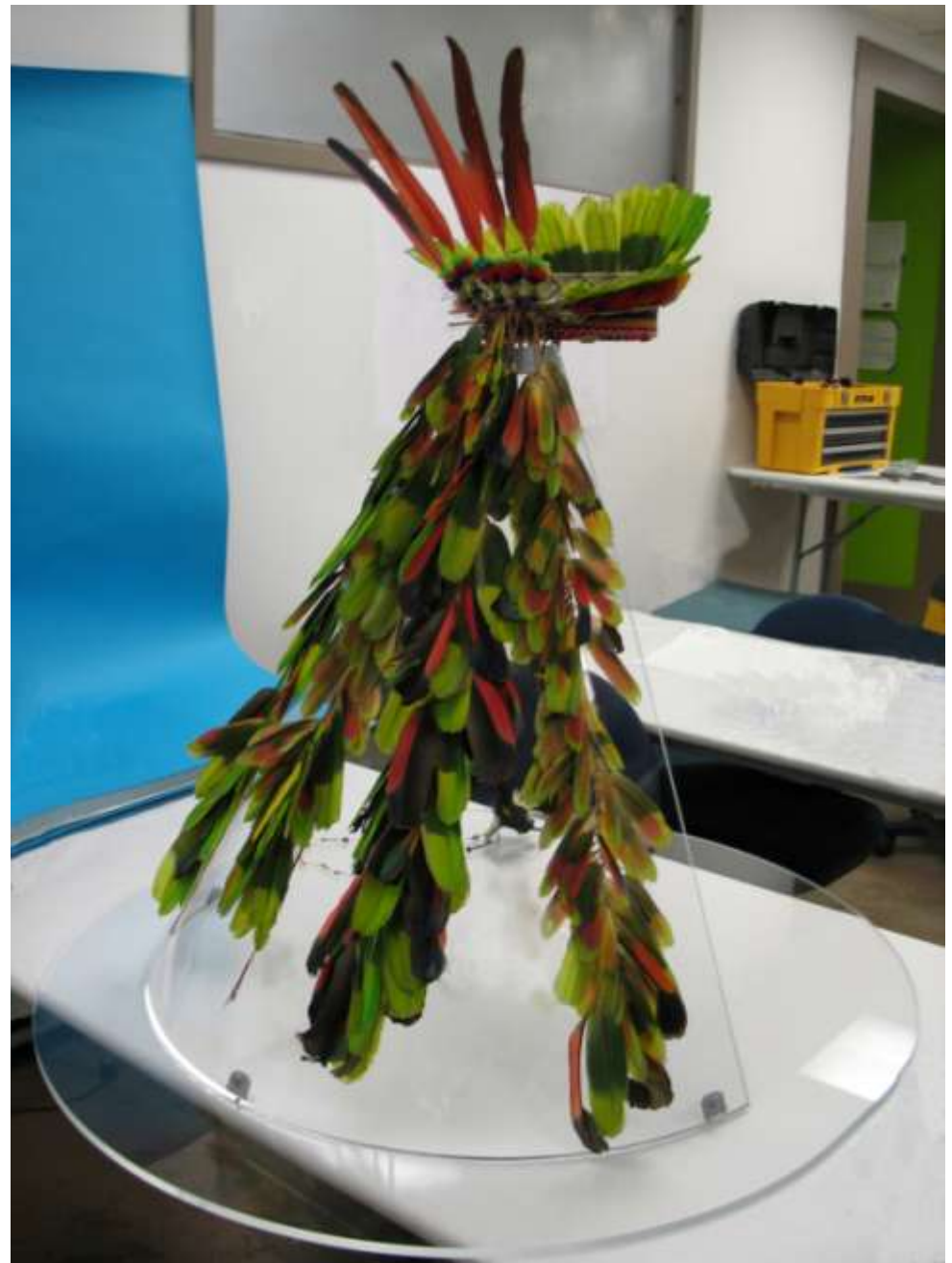
Milliput

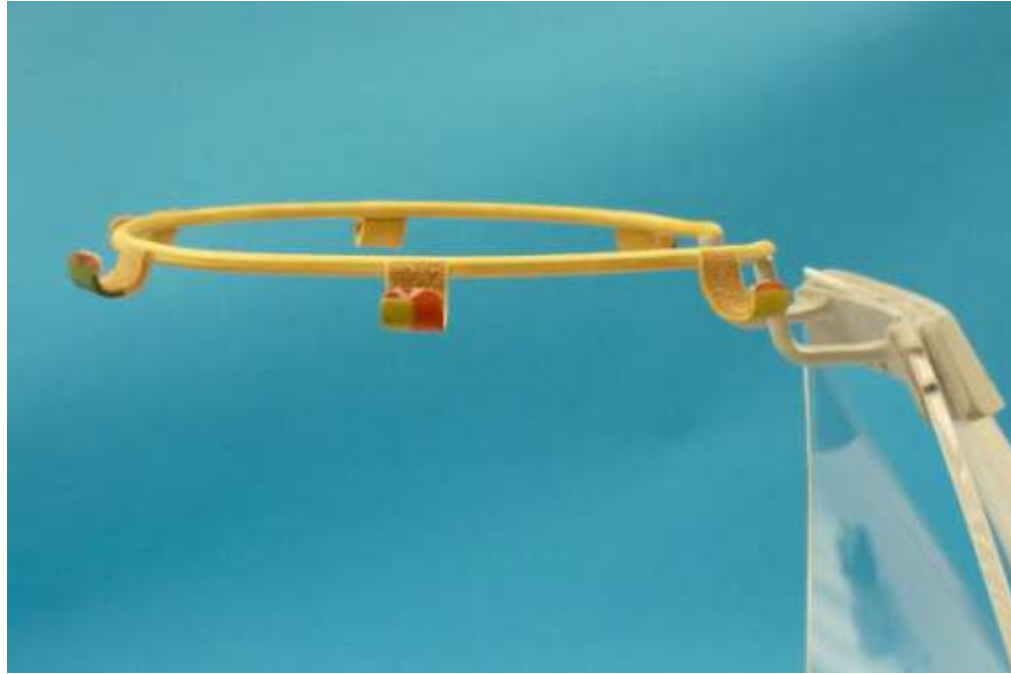


Steel

Materials are chosen
to suit the object and
display







At least 40,000 years ago, both *Homo sapiens* and the Neanderthals were laying their dead to rest. Although we cannot know their spiritual beliefs, we can imagine a ritual event: digging a grave, positioning the body, and depositing objects as offerings before covering the dead with stones or soil.



Red ochre is a pigment that was sometimes used to color bodies in graves. Animal teeth and other ornaments often decorated the bodies. Some objects and materials were endowing

This adult female skeleton was found in a cave in France, curled in the position you see here. This **purposeful placement** and the fact that the woman was buried quickly, causing her skeleton to be very well preserved, leads scientists to think she was carefully buried after her death some 13,000 years ago. All of the bones you see here are real except for the pelvis and one of the arm bones.

Female skeleton
Buried quickly
Purposeful placement

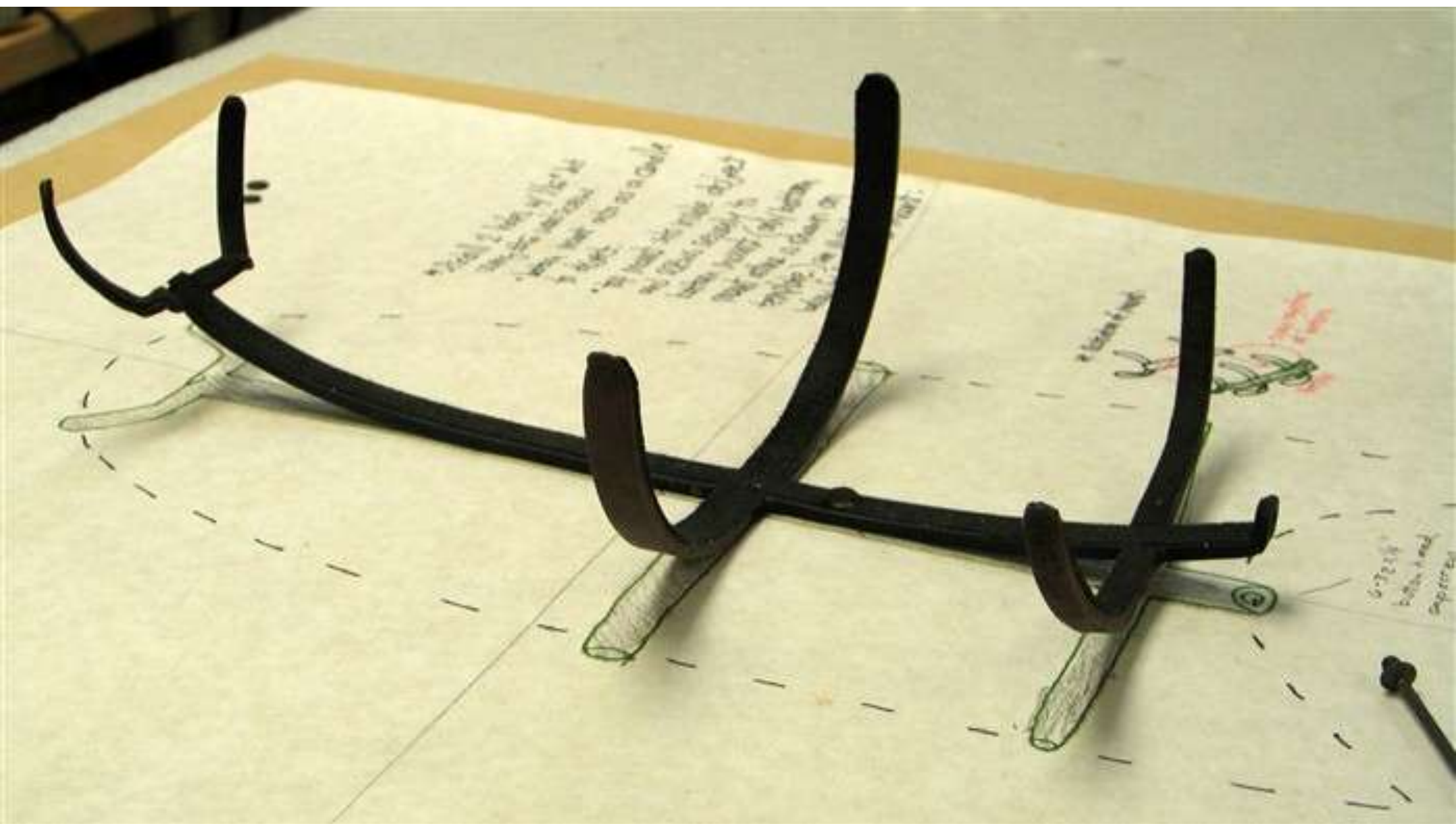
At least 40,000 years ago, both *Homo sapiens* and the Neanderthals were laying their dead to rest. Although we cannot know their spiritual beliefs, we can imagine a ritual event: digging a grave, positioning the body, and depositing objects as offerings before covering the dead with stones or soil.

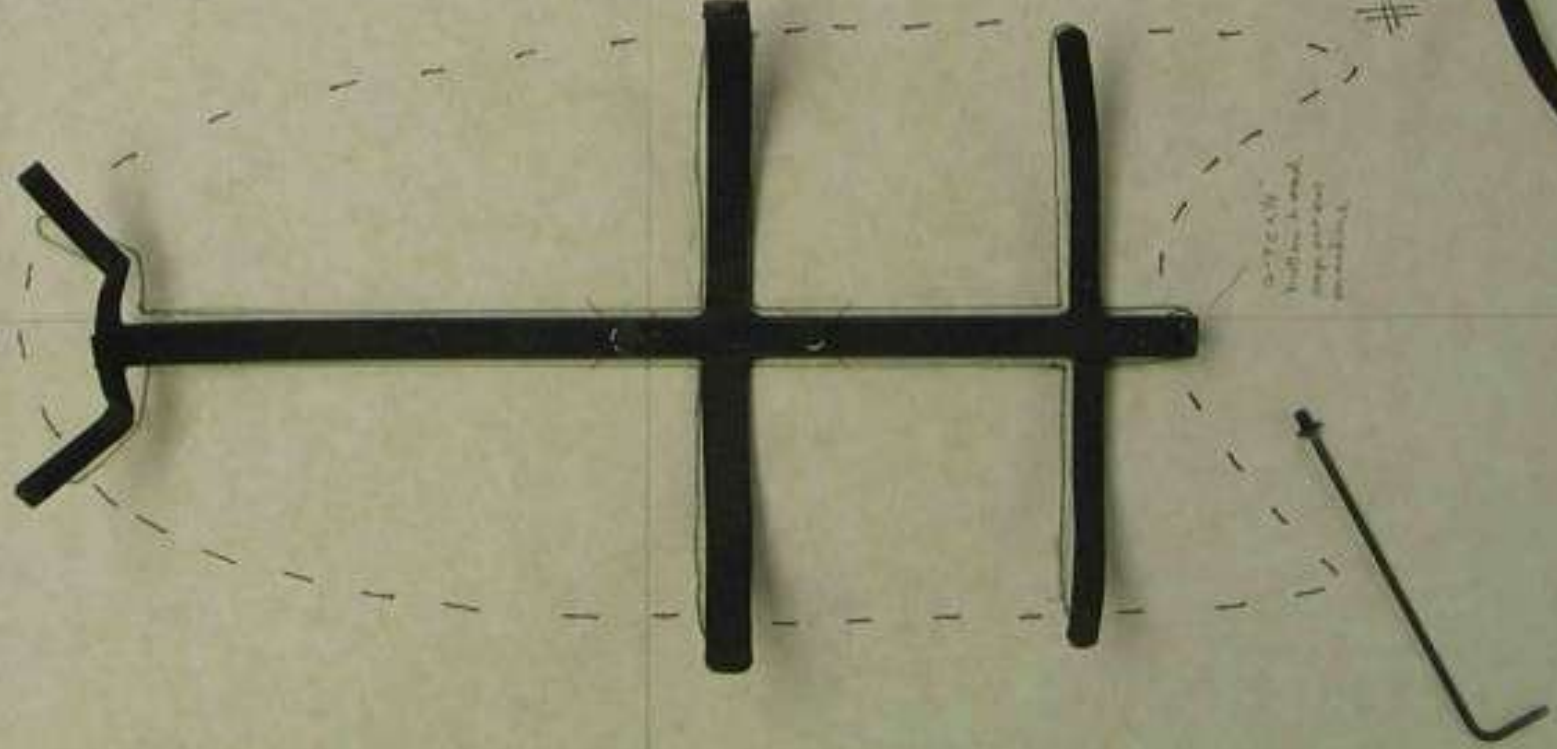


Red ochre is a pigment that was sometimes used to color bodies in graves. Animal teeth and other ornaments often decorated the body. The use of such objects and in burial suggests human

This is





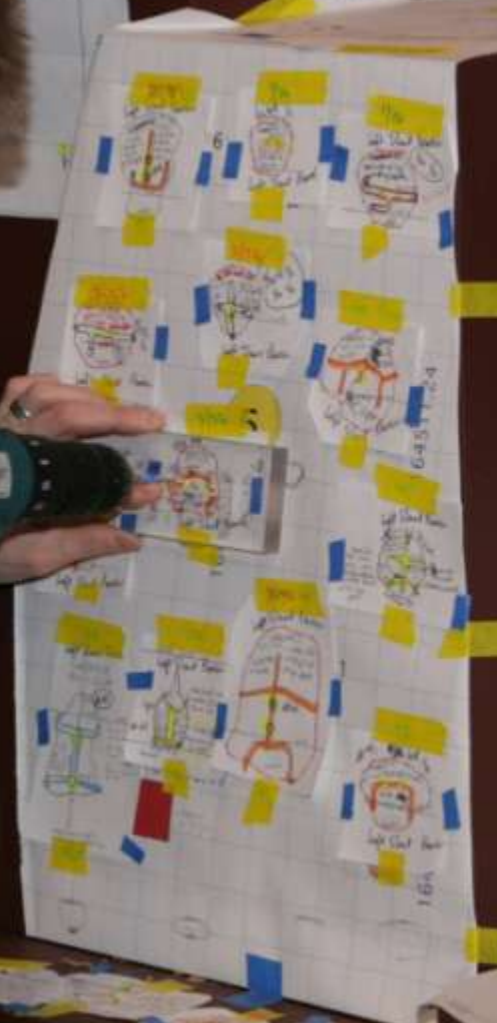


- * Drill 2 holes w/ 1/16" bit using #6 wood screw.
- * bottom mount acts as a handle to object.
- * top mount sits inside object and screws securely to bottom mount (only bottom mount outline is shown on template.) see illustration below for function of mount.

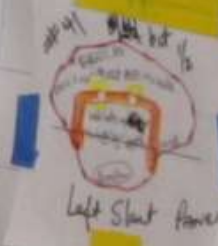
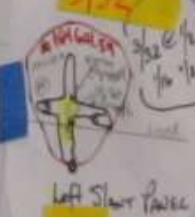


#14058

cut out
with the wood
screw and
mount.

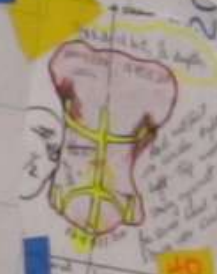
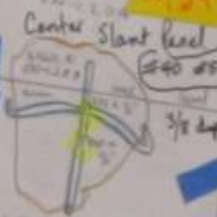


- 1. **Cervix**
The cervix is the lower part of the uterus that leads into the vagina.
- 2. **Cervix**
The cervix is the lower part of the uterus that leads into the vagina.
- 3. **Cervix**
The cervix is the lower part of the uterus that leads into the vagina.
- 4. **Cervix**
The cervix is the lower part of the uterus that leads into the vagina.
- 5. **Cervix**
The cervix is the lower part of the uterus that leads into the vagina.
- 6. **Cervix**
The cervix is the lower part of the uterus that leads into the vagina.
- 7. **Cervix**
The cervix is the lower part of the uterus that leads into the vagina.
- 8. **Cervix**
The cervix is the lower part of the uterus that leads into the vagina.
- 9. **Cervix**
The cervix is the lower part of the uterus that leads into the vagina.
- 10. **Cervix**
The cervix is the lower part of the uterus that leads into the vagina.
- 11. **Cervix**
The cervix is the lower part of the uterus that leads into the vagina.
- 12. **Cervix**
The cervix is the lower part of the uterus that leads into the vagina.



64511.24

163



8

The Ancient Americas is a story of
diversity and change—not progress



10. Ceramic figure

11. Ceramic vessel

12. Ceramic head

13. Ceramic figure



These shells are the hard parts of animals called mollusks. Mollusks with two-part shells—such as the scallop Venus Clam (22)—are called bivalves. Mollusks with one-piece shells—such as the Nautilus (29)—are called gastropods. Some of these species are well known and others are recent discoveries. All are part of a diverse and constantly changing, evolving, and diversifying

Florida sea life. Some of these shells are from the Florida coast. But other species, such as the Nautilus (29) and the scallop Venus Clam (22), are from other parts of the world. The Florida coast is home to many other mollusks. Visit the Florida Sea Life exhibit to learn more about the diversity of Florida's marine life.

- 1 Smooth Flounder *Paralichthys lethostigma*
- 2 Rough Flounder *Citharus linguatula*
- 3 Spiny Flounder *Platichthys flesus*

While looking for a species during the Florida Sea Life exhibit, you may find a shell that is not in the exhibit. If you find a shell that is not in the exhibit, please bring it to the exhibit staff. They will be happy to help you identify it. If you find a shell that is not in the exhibit, please bring it to the exhibit staff. They will be happy to help you identify it.

- 4 Sea Fan *Cladophora*



- | | | | | | | | | | |
|--|---|--|---|--|--|--|--|--|--|
| <ul style="list-style-type: none"> 10 Thorny Oyster <i>Spondylia</i> 11 Deer Oyster <i>Tridacna</i> 12 Limpet <i>Limpet</i> 13 Beautiful Cowrie <i>Cyprina</i> | <ul style="list-style-type: none"> 14 Pearls <i>Pearl</i> 15 Nautilus <i>Nautilus</i> 16 Ford Oyster <i>Ford</i> 17 Beautiful Cowrie <i>Cyprina</i> | <ul style="list-style-type: none"> 18 Lingulate Murex <i>Lingula</i> 19 Smooth Flounder <i>Paralichthys</i> 20 Rough Flounder <i>Citharus</i> 21 Spiny Flounder <i>Platichthys</i> | <ul style="list-style-type: none"> 22 Bleeding Tooth <i>Bleeding</i> 23 Red Brown Ark <i>Red Brown</i> 24 White Giant Urns <i>White Giant</i> 25 Lightning Whisk <i>Lightning</i> | <ul style="list-style-type: none"> 26 Stiff Periwinkle <i>Stiff Periwinkle</i> 27 Argyle Triton <i>Argyle Triton</i> 28 Florida Fighting Conch <i>Florida Fighting</i> 29 Atlantic Fligellid <i>Atlantic Fligellid</i> | <ul style="list-style-type: none"> 30 Common Nudibrach <i>Common Nudibrach</i> 31 Dorsate Lucine <i>Dorsate Lucine</i> 32 Cabot's Murex <i>Cabot's Murex</i> 33 Orange Mangrove <i>Orange Mangrove</i> | <ul style="list-style-type: none"> 34 Atlantic Killdeer <i>Atlantic Killdeer</i> 35 Hexagonal Murex <i>Hexagonal Murex</i> 36 Royal Comb Venus <i>Royal Comb Venus</i> 37 Dorsate Pupa <i>Dorsate Pupa</i> | <ul style="list-style-type: none"> 38 Yellow Murex <i>Yellow Murex</i> 39 West Indian Dorsate <i>West Indian Dorsate</i> 40 Flamingo Tongue <i>Flamingo Tongue</i> 41 Giant Bivalve <i>Giant Bivalve</i> | <ul style="list-style-type: none"> 42 Sandy Annelid <i>Sandy Annelid</i> 43 True Tule <i>True Tule</i> 44 Giant Fawn Oyster <i>Giant Fawn Oyster</i> 45 Hawkwing Conch <i>Hawkwing Conch</i> | <ul style="list-style-type: none"> 46 Litter's Bayonet Limpet <i>Litter's Bayonet Limpet</i> 47 Eastern Argyle <i>Eastern Argyle</i> 48 Curious Bivalve <i>Curious Bivalve</i> 49 Sandy Scallop <i>Sandy Scallop</i> |
|--|---|--|---|--|--|--|--|--|--|









Section # / Title	5 Human Interaction	Case Number	19	Connect	Height	2-3/8
Inventory #	26	Type	Scientific Specimen		Width	2-3/4 in
Brief Description	Toe bone of an American Mastodon (<i>Mammot americanum</i>)		Catalog Number		Depth	1-5/16
Institution	Illinois State Museum		K-L23-20			
Handling						



Armature with rear bracket removed using flat head screw driver.
object oriented to mount.



Hold object as shown avoid mind on right side.
Lower into left bracket 1st.
Right arm of mount fits below mended area.
Number visible at top to the left.

QTY.	LENGTH	ITEM
1	1/4"	4-40 button head socket machine screw

TOOL:
alien wrench

Page from
Installation Manual
for traveling exhibit

The FIELD MUSEUM - CHICAGO

ARTIFACT and MOUNT
INSTALLATION
MANUAL

Pacific Mexico
Exchange

MOANA EXHIBIT



Thanks to the Field Museum Mount Shop Crew

Kristen Kleckler

Ann Prazer

Meg Bye

Nathan Pope

and the entire Exhibition Team

THE END