

# Indianapolis Museum of Art – Material Analysis Sheet

**Material:**

BenM Ultra Eggshell Paint, Cured

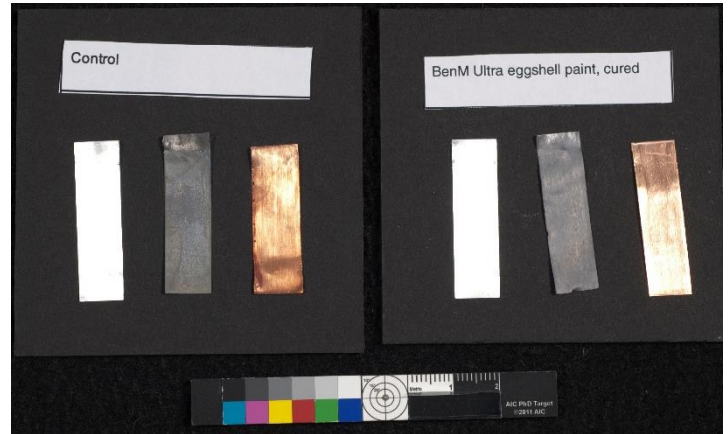
Elvace 1875



**Oddy:**

Temporary to Fail

N = 3; measured 3/2016 to 7/2016



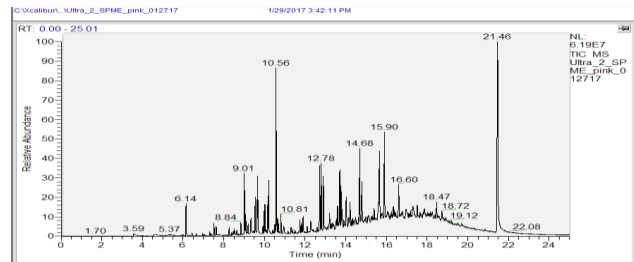
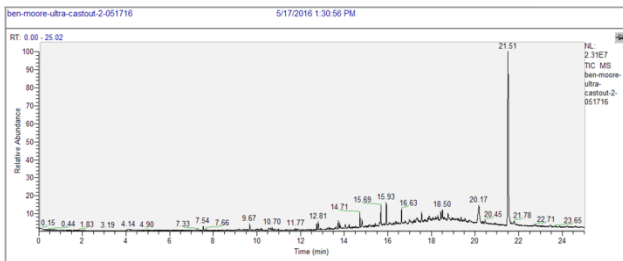
Notes: Some white discoloration on lead along with a slight haze and irregular sheen on silver coupon.

**Evolved-Gas Analysis:**

EGA reveals the presence of trimethylamine at 4.1, 2-(2-methoxypropoxy)-1-propanol at 7.54, tri(1,2-propyleneglycol) at 7.67, ethriol at 9.67, and long chain hydrocarbons from 13 to 16. The large peak at 21.52 is the solvent 2-ethylhexanoic acid.

**SPME Analysis:**

SPME shows n-butyl ether at 6.14, 2-(2-methoxypropoxy)-1-propanol at 7.51, butoxyethoxyethanol at 9.01, ethriol at 9.65, undecyl alcohol at 10.56, 2-ethylhexyl 2-ethylhexanoate at 12.78, hydrocarbons from 13 to 16. The large peak at 21.46 can be attributed to solvent.



**Microchemical Tests:**

Azide: **F**

Chromatropic Acid: **P**

Iodide/Iodate: **P**