

Mounting the  
Crucified Christ



Without Nails



## Deities and Colonialism



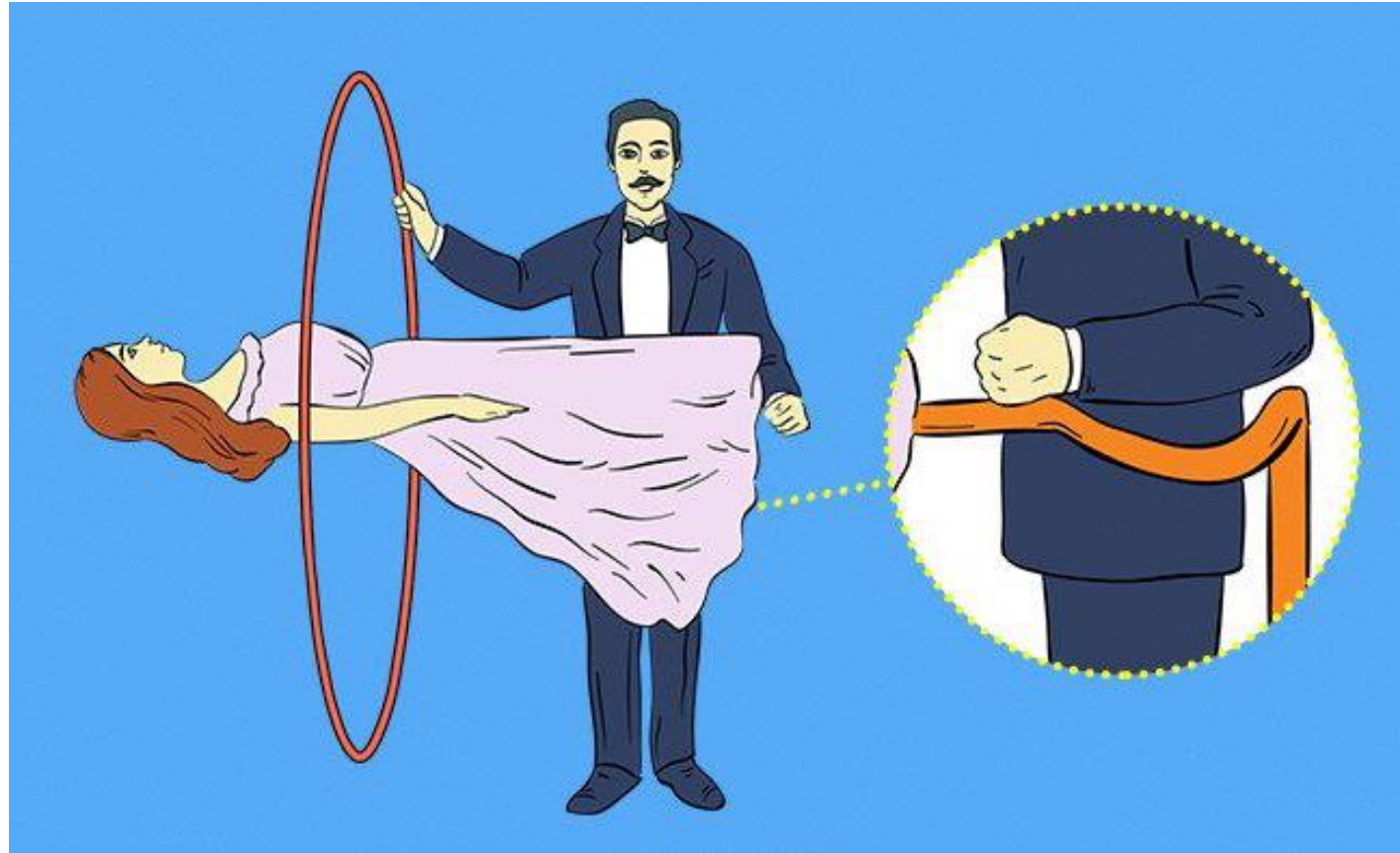
Buddha from Sri Lanka

Trickster





**Not Real Magic.**



Unreal



## The Origins of Magic



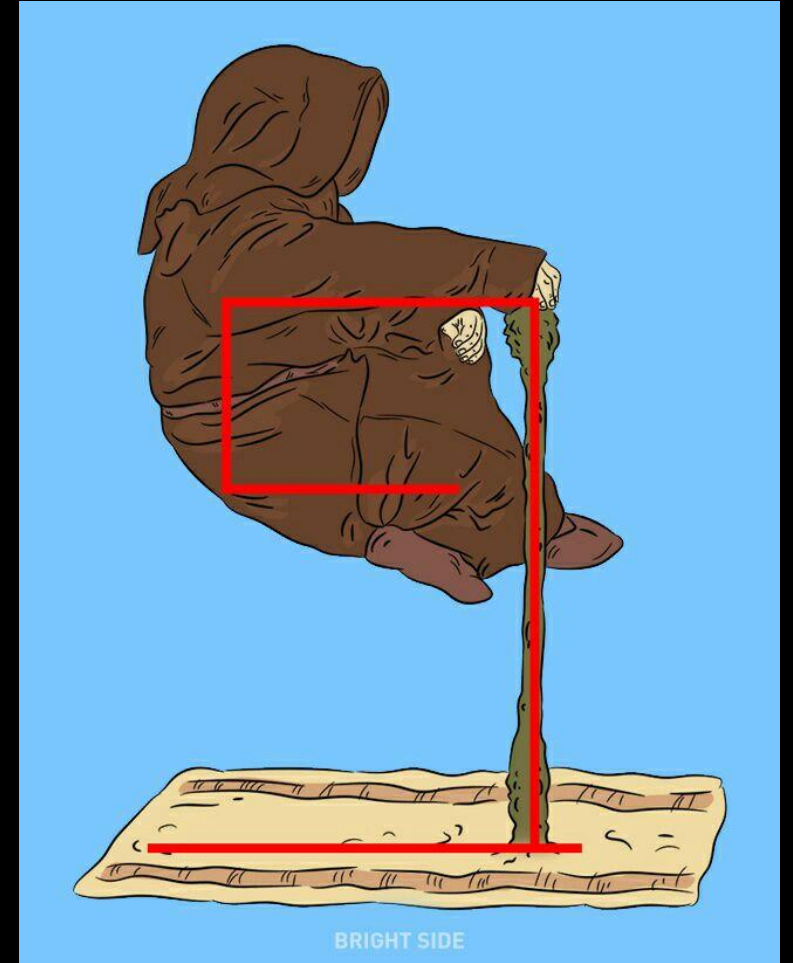


## Mount Making Magic

The magician uses suggestion to create an edifice Of illusion.



Magician  
Or  
Mountmaker?





Mountmakers use magic  
out of necessity.

This requires deep  
knowledge of the  
artifact.

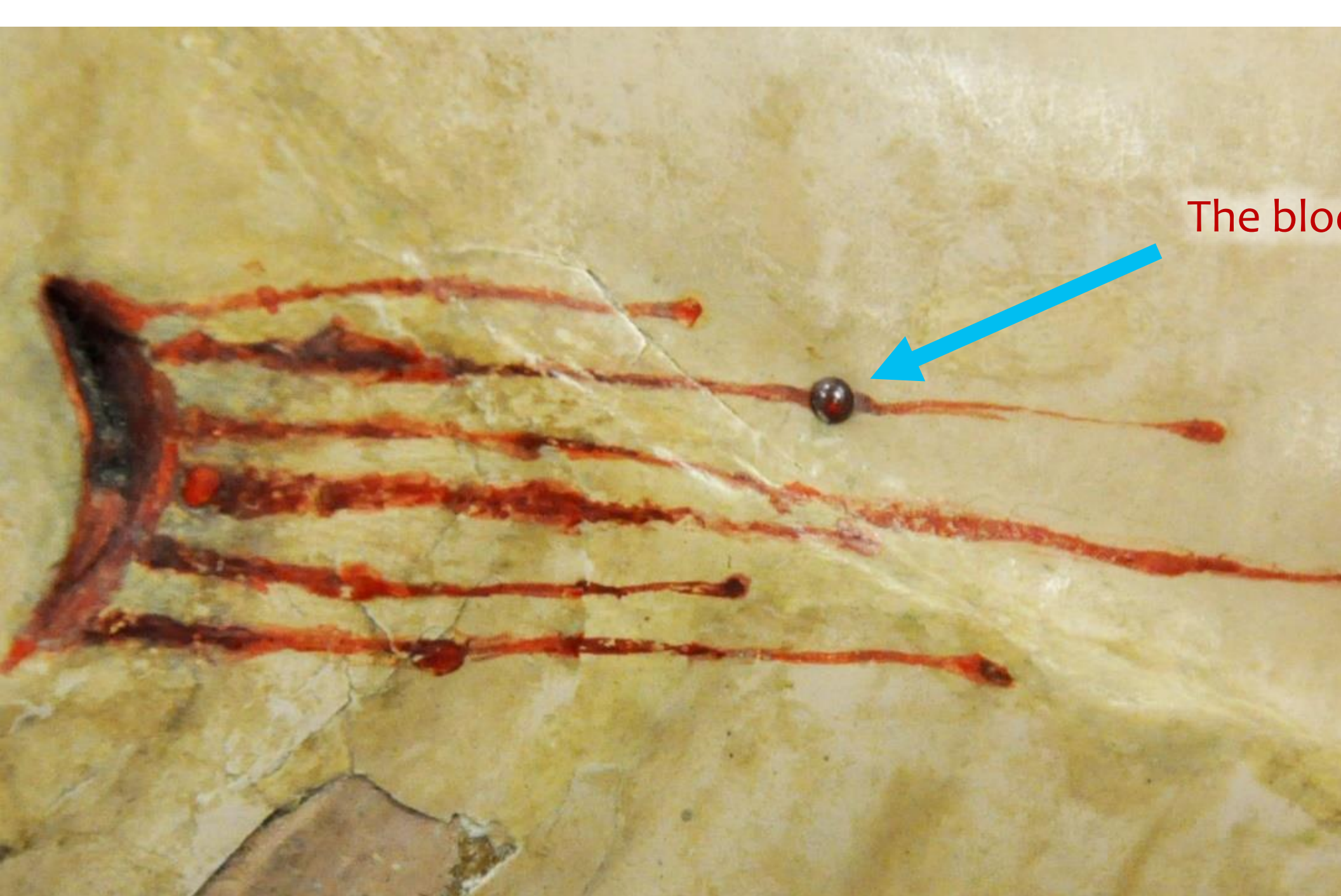


Under a black light we could find hidden repairs.

2016.163 NT  
ASIAN JAPANESE MUSEUM OF SAN FRANCISCO  
6/21/17  
CM

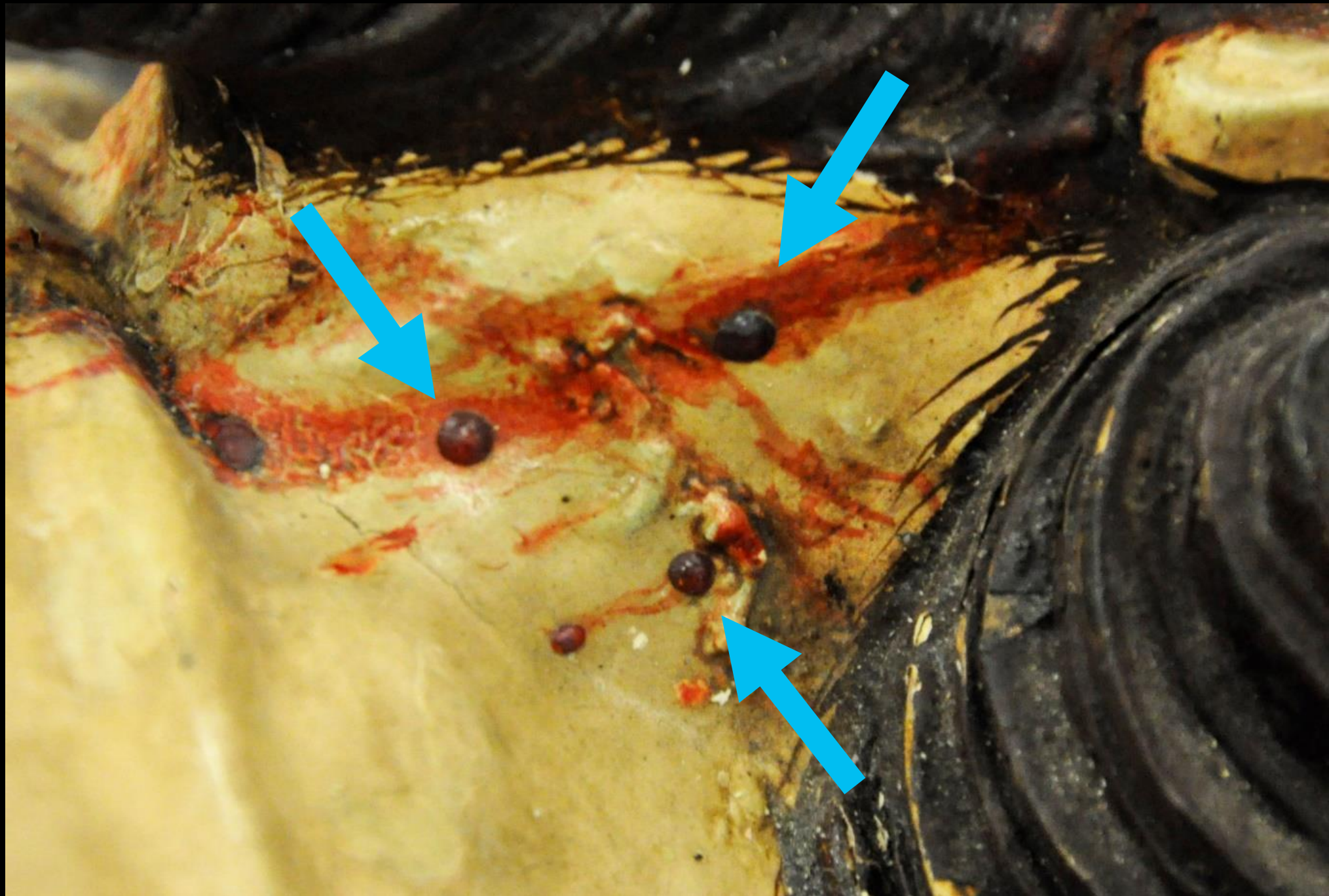
And under the microscope Mark discovered hidden gems.



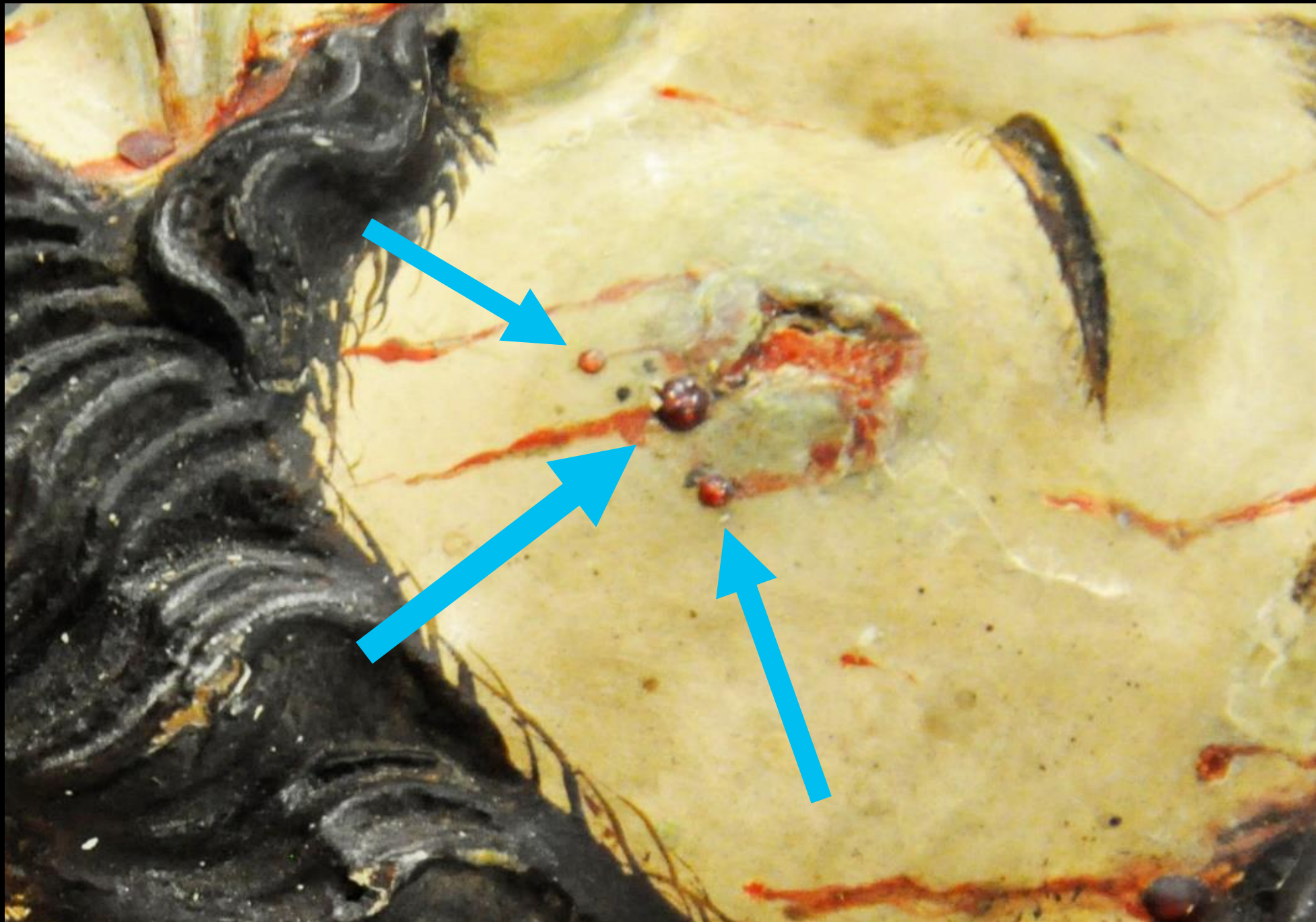


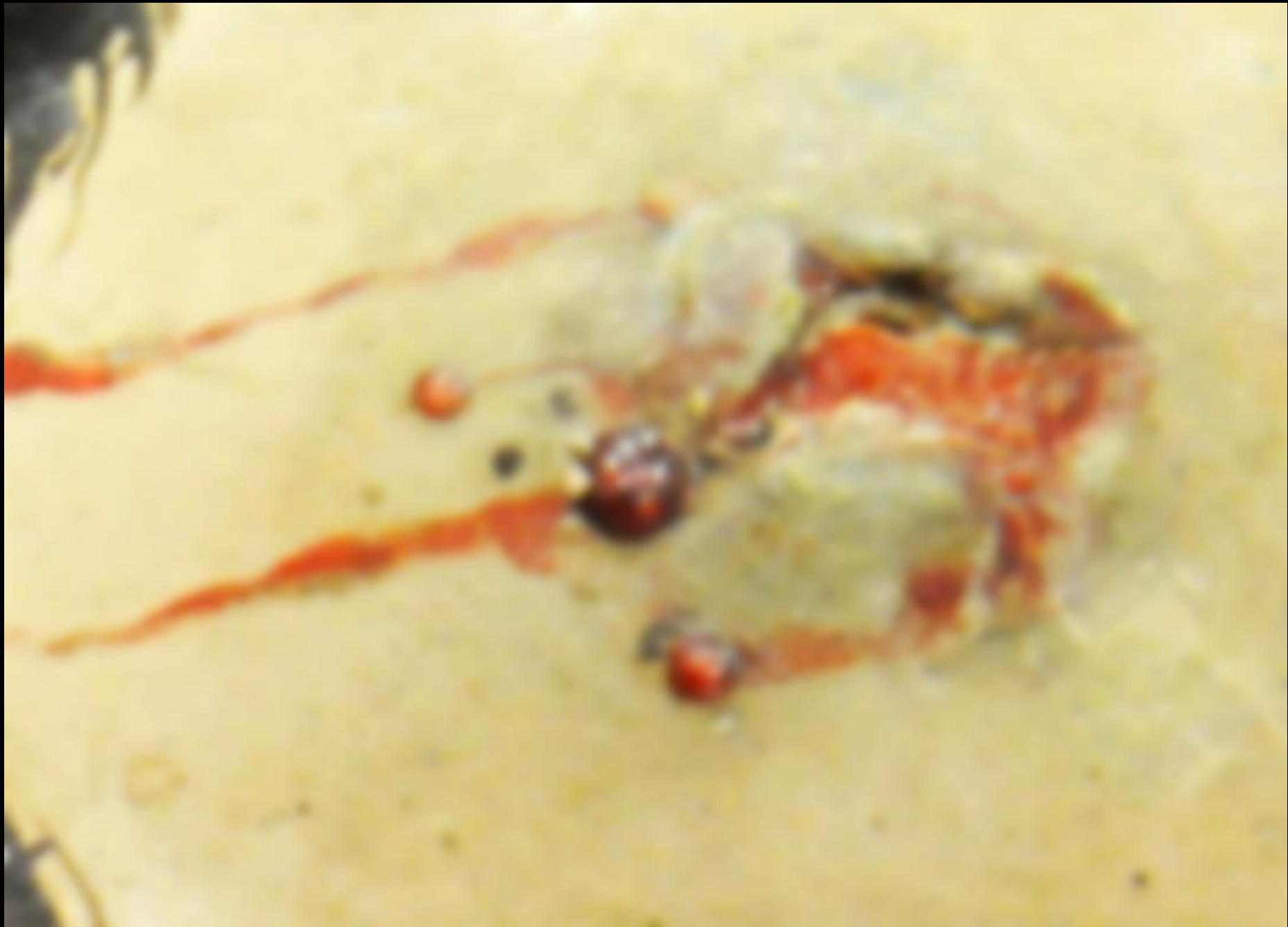
The blood of Jesus.

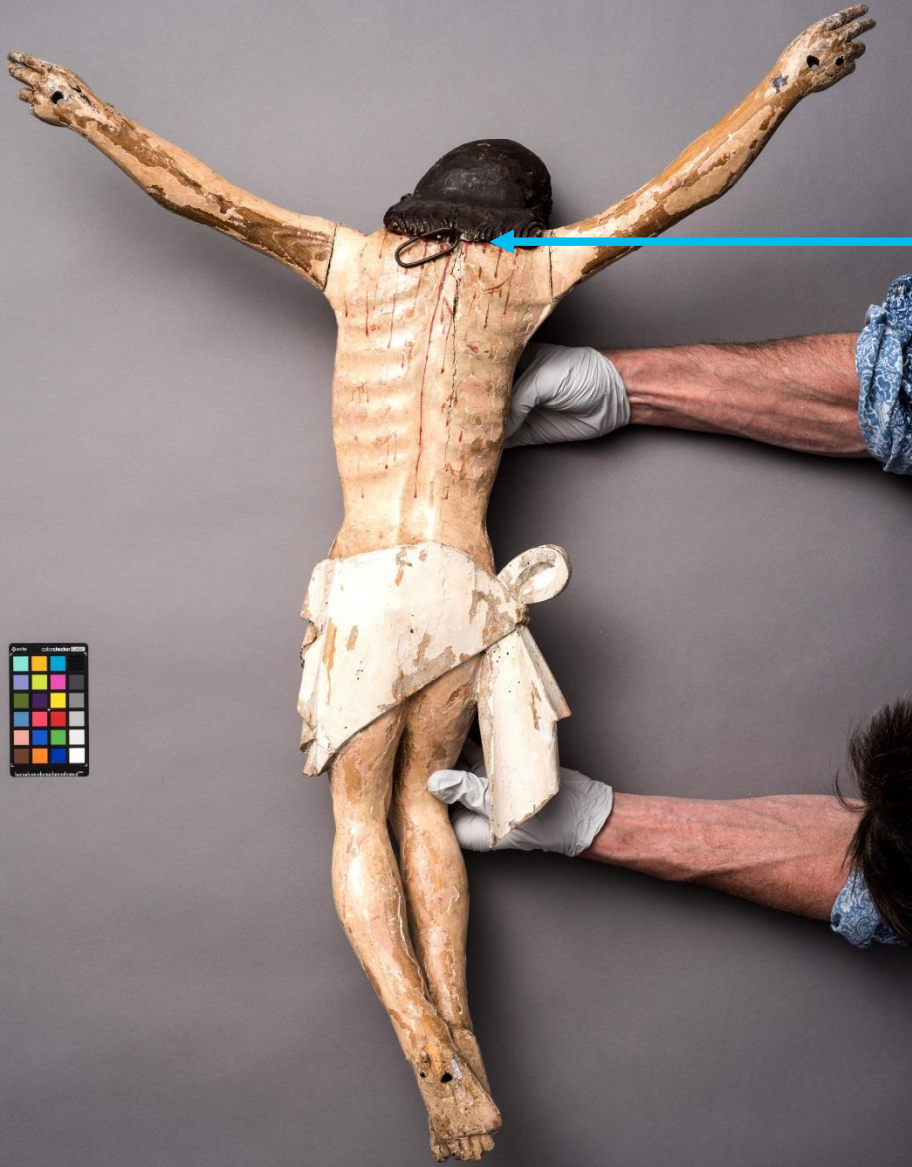












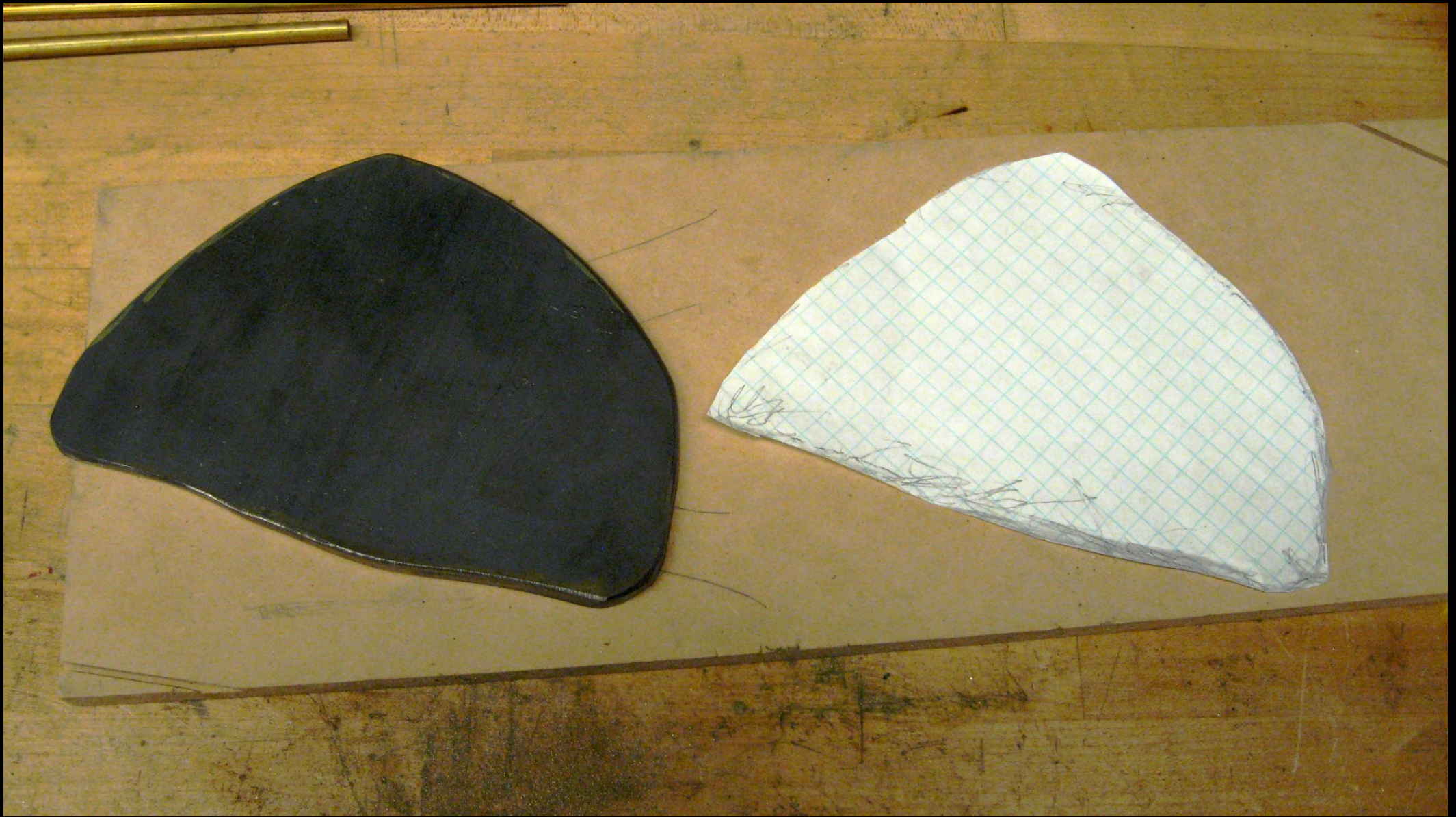
Jesus originally hung from a rusty chain.

Where to affix a mount to the sculpture.





Shaping the steel loincloth



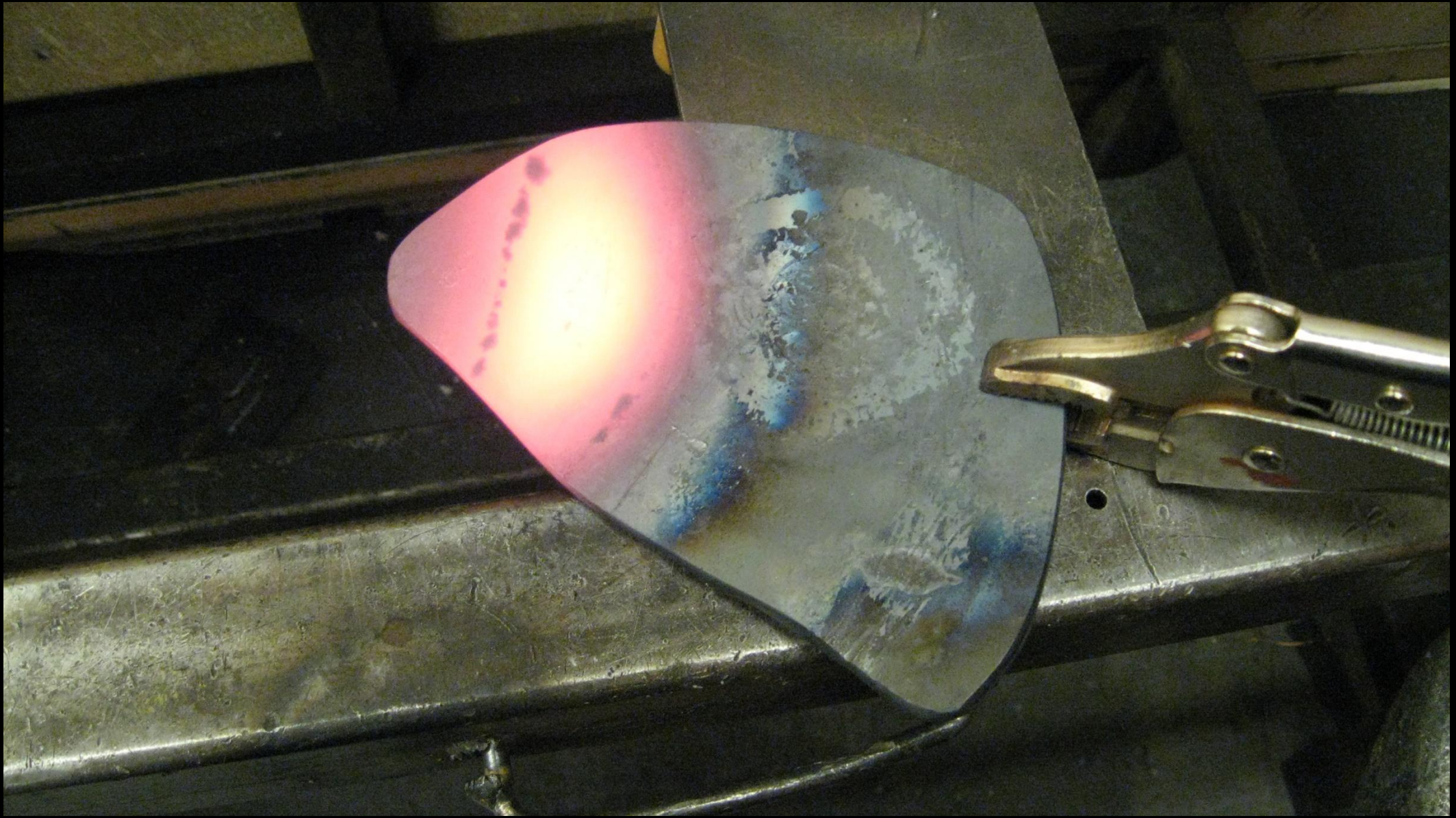
From the template



Laying out dimensional form

# Heating with the Rosebud Torch





Hot forming the steel with the rosebud torch

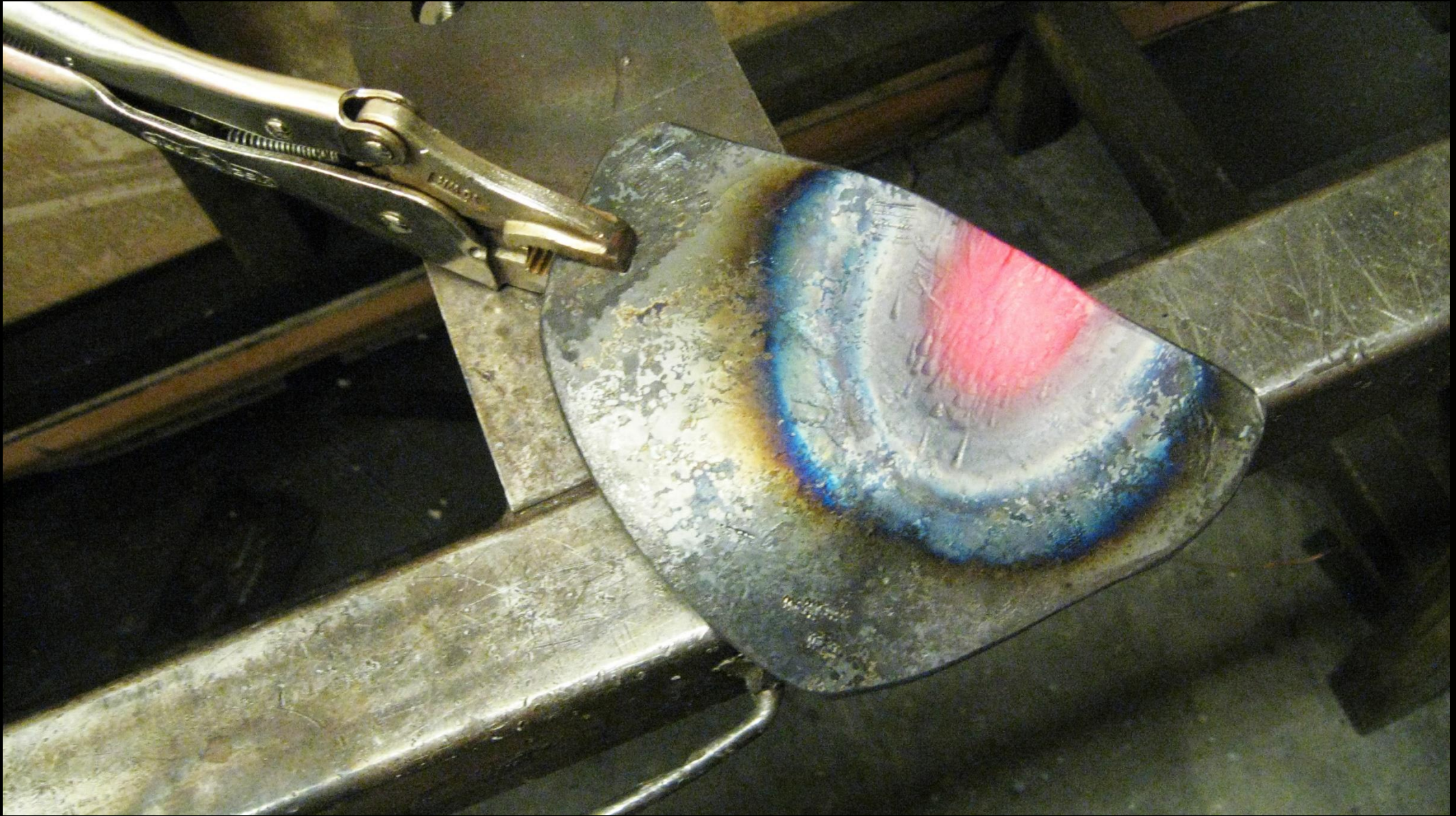




Using the bench anvil for subtle forming



Marking readjustments

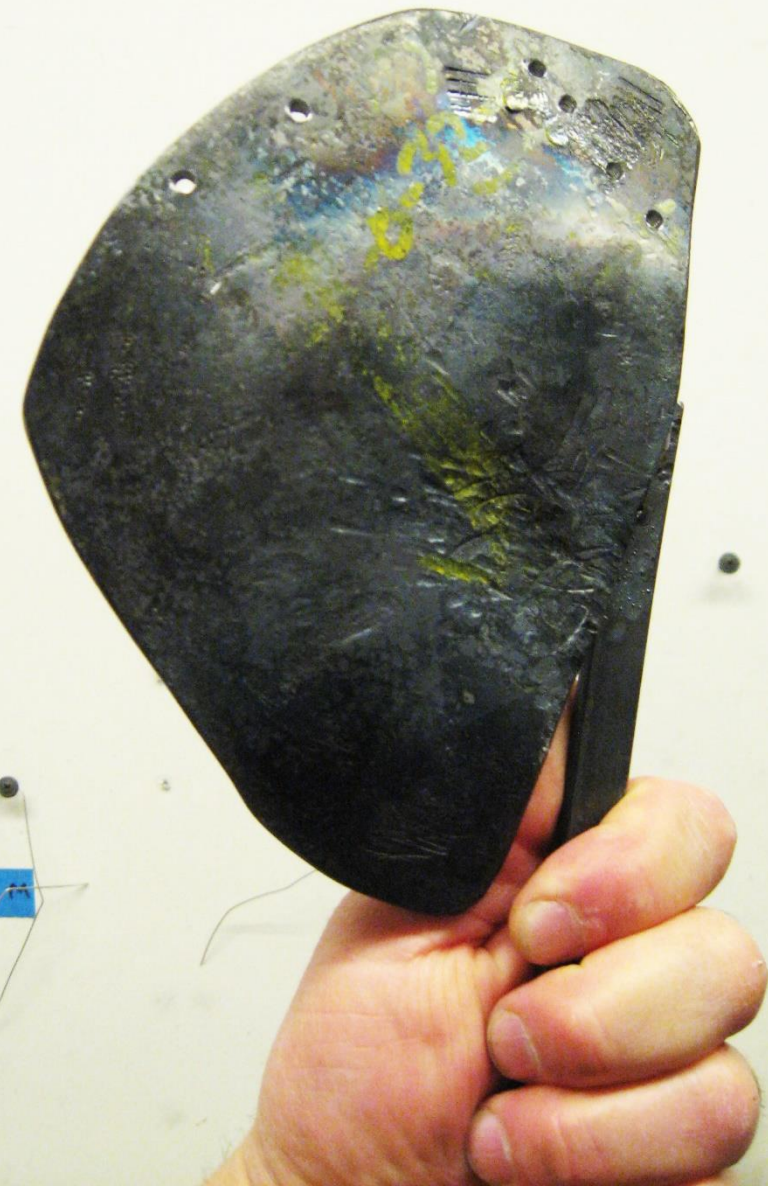


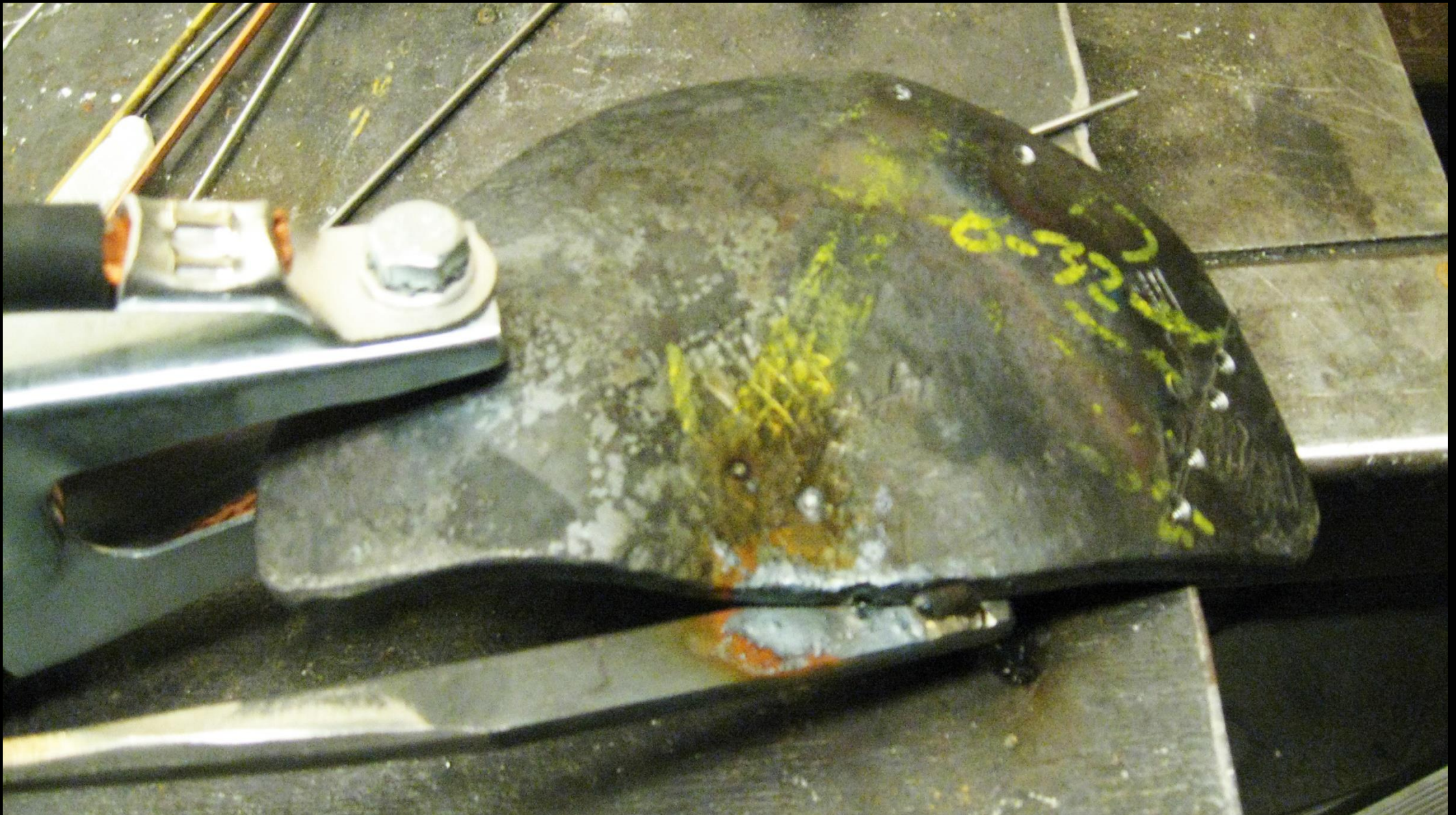
Reheating with the rosebud too correct bends



Tapped holes for mount arms.

First arm tacked onto the finished form with tapped holes

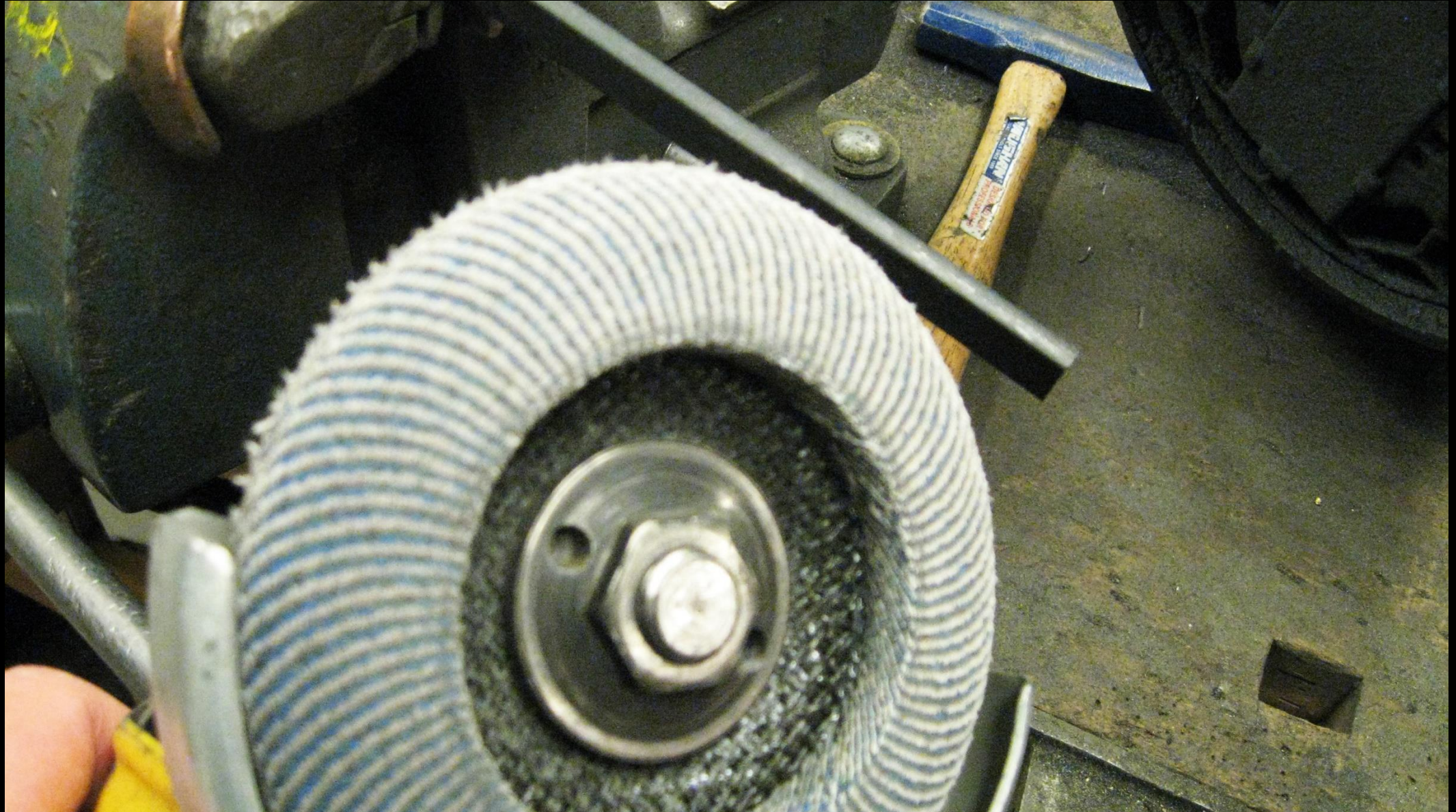




Weld set up for lower arm



Bead satisfaction





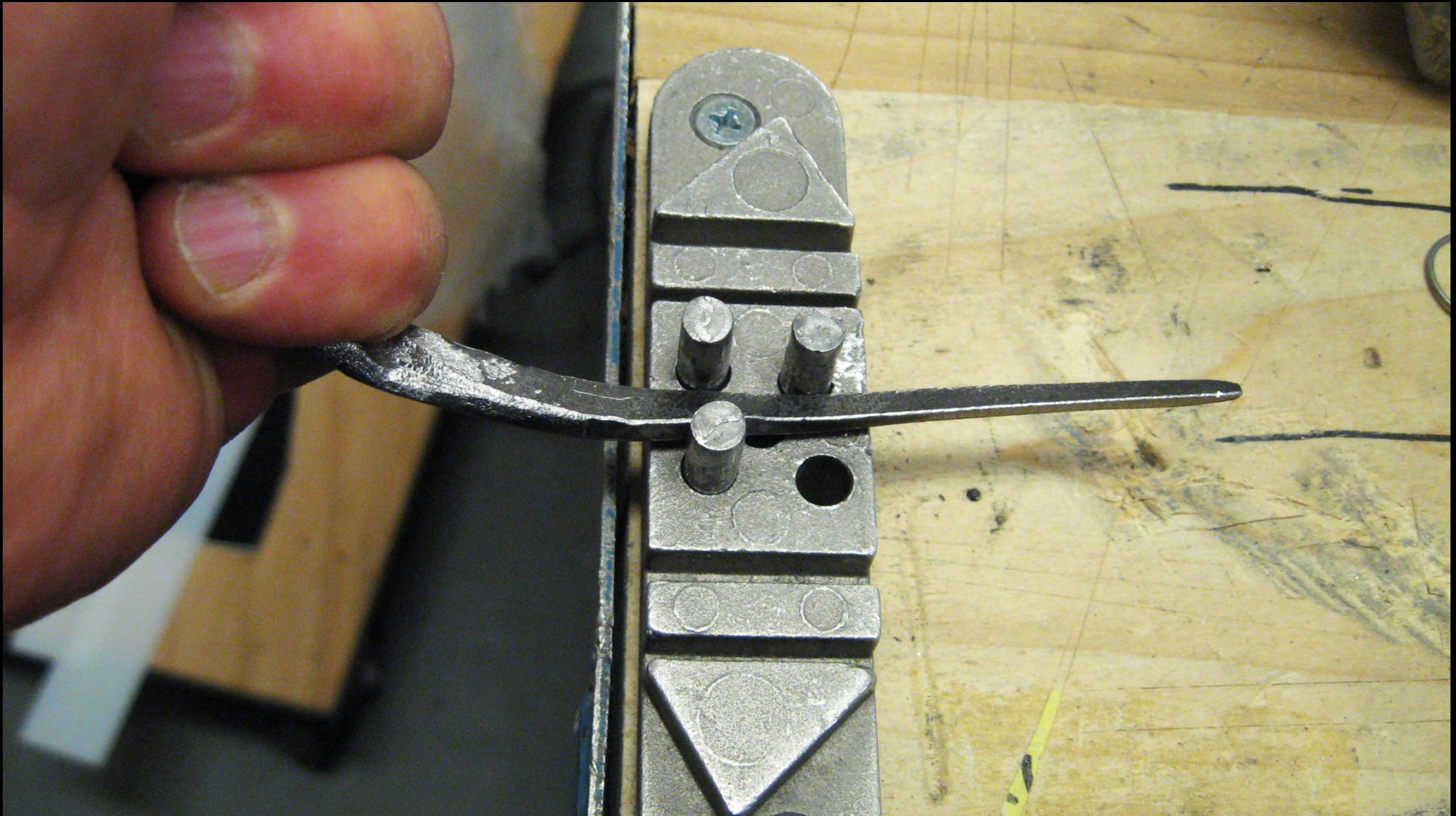




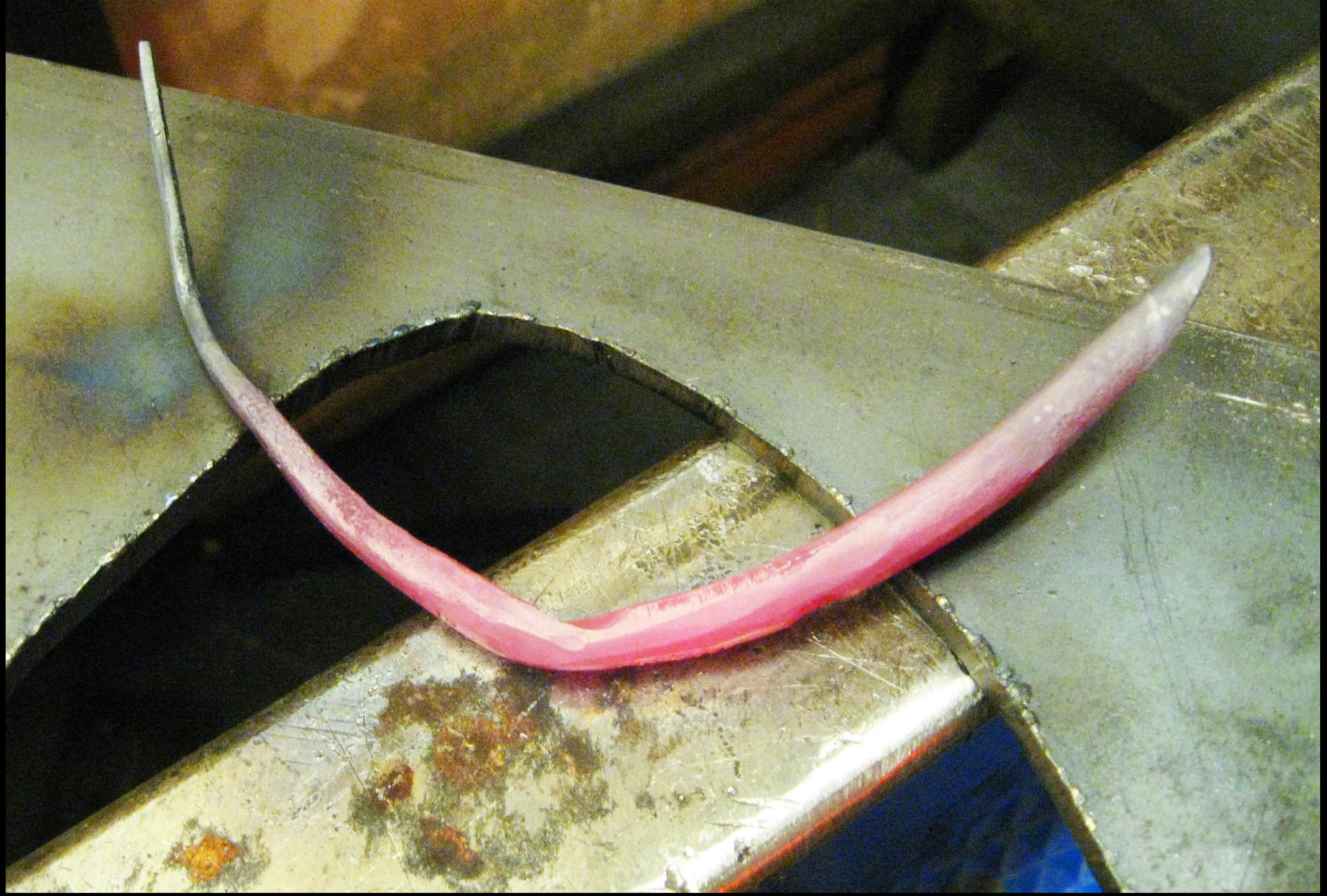


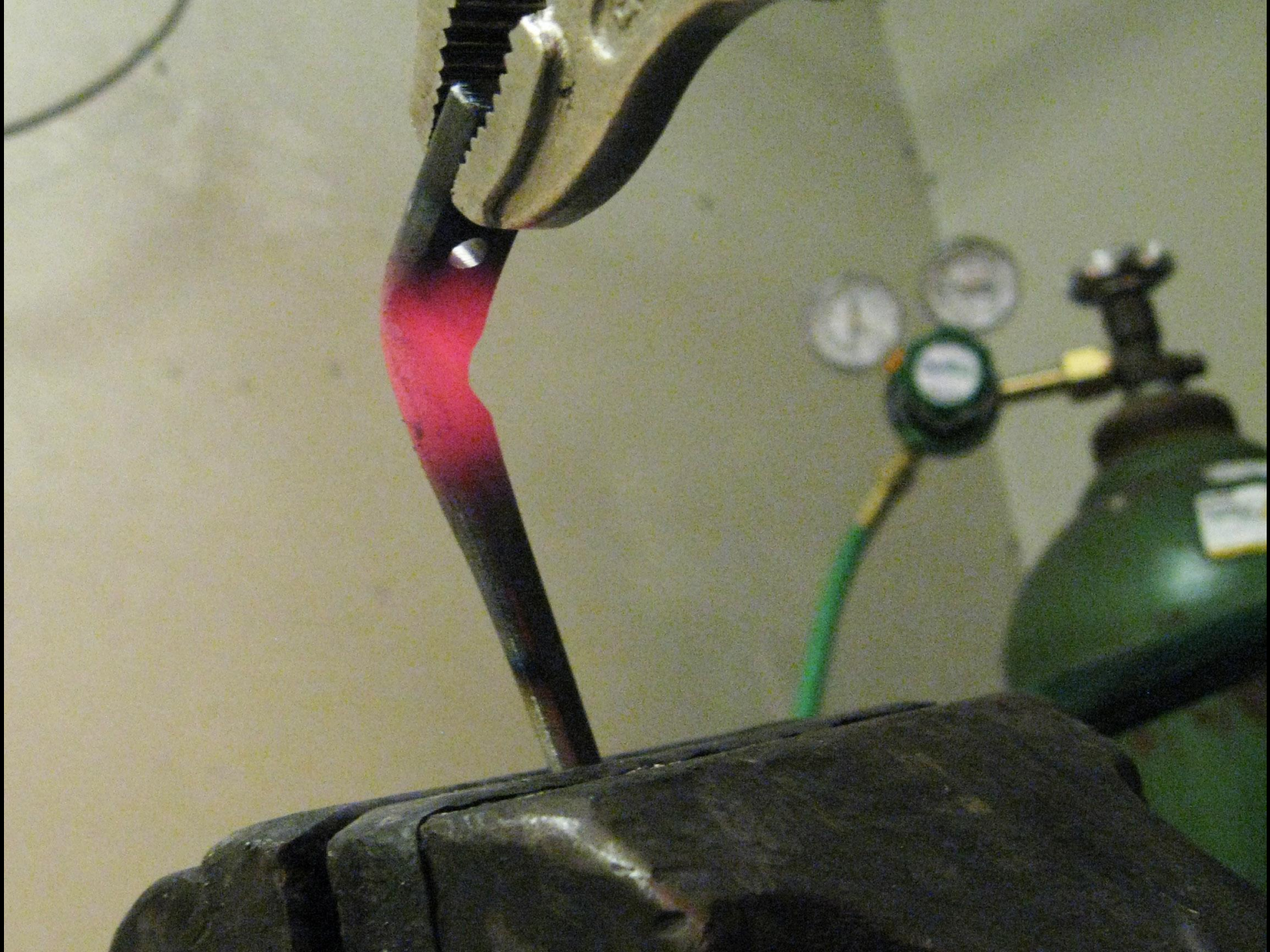






Mini Bench Bender













Following Form

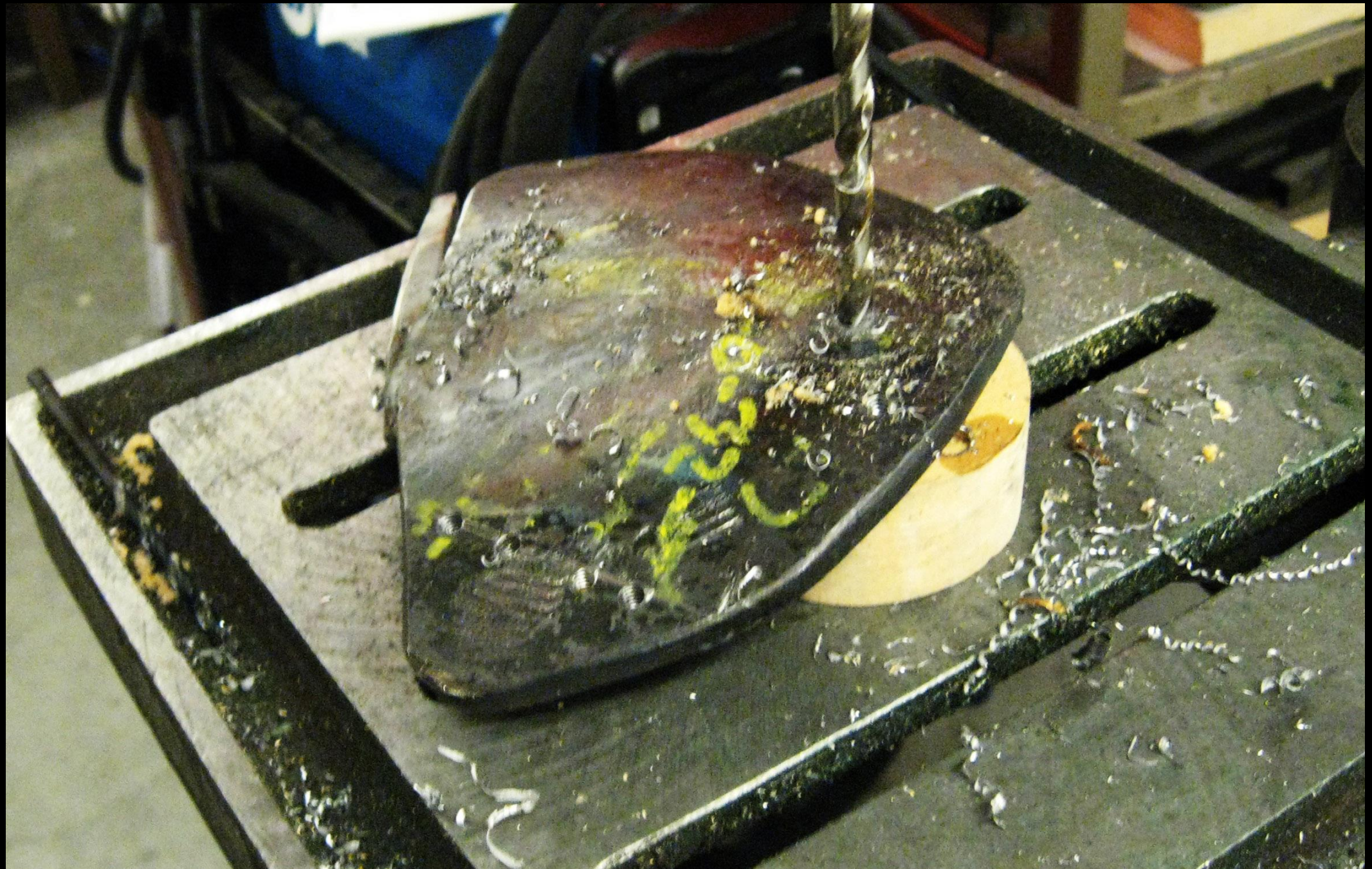
a ride in the saddle





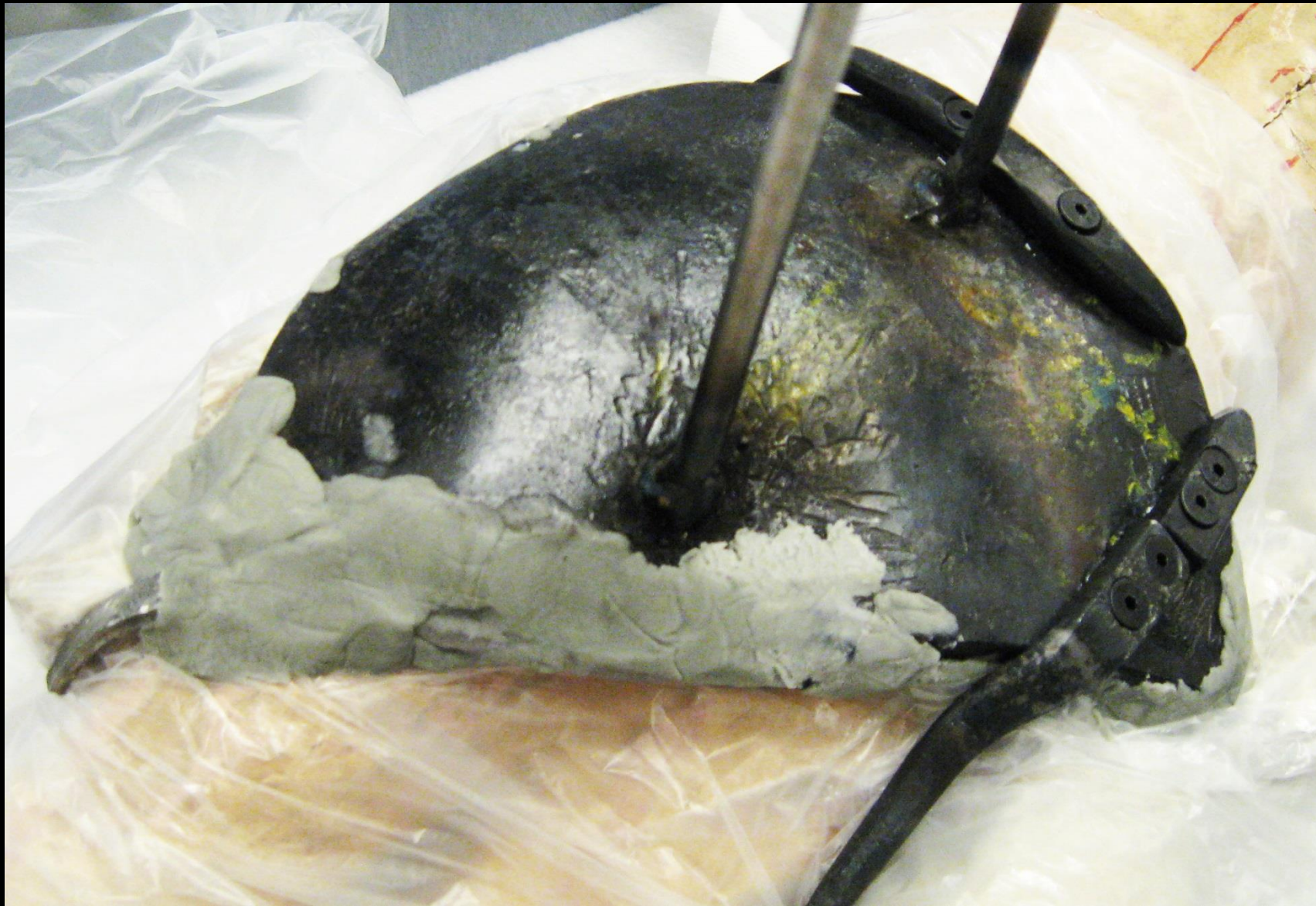
Creating the Wall Attachment







Welded on  
mounting rods.



Making a Perfect Fit

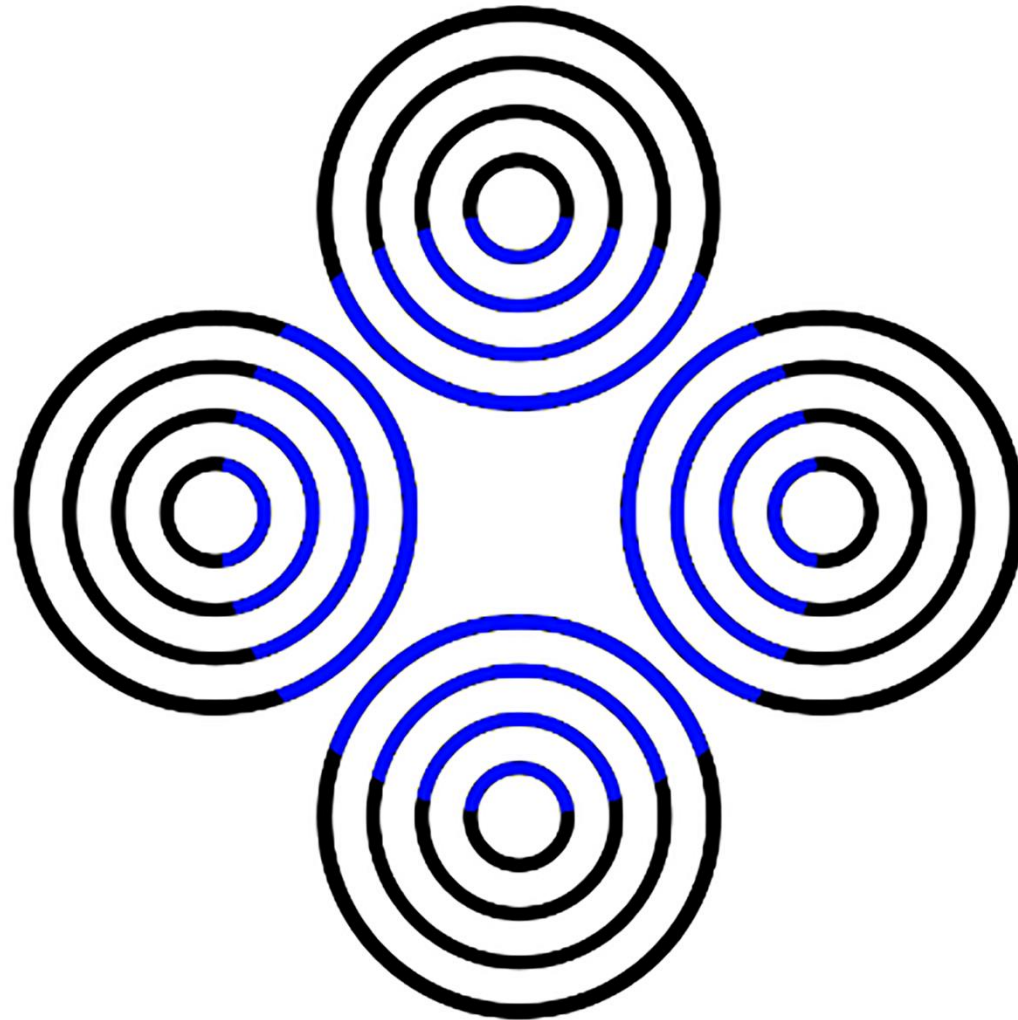




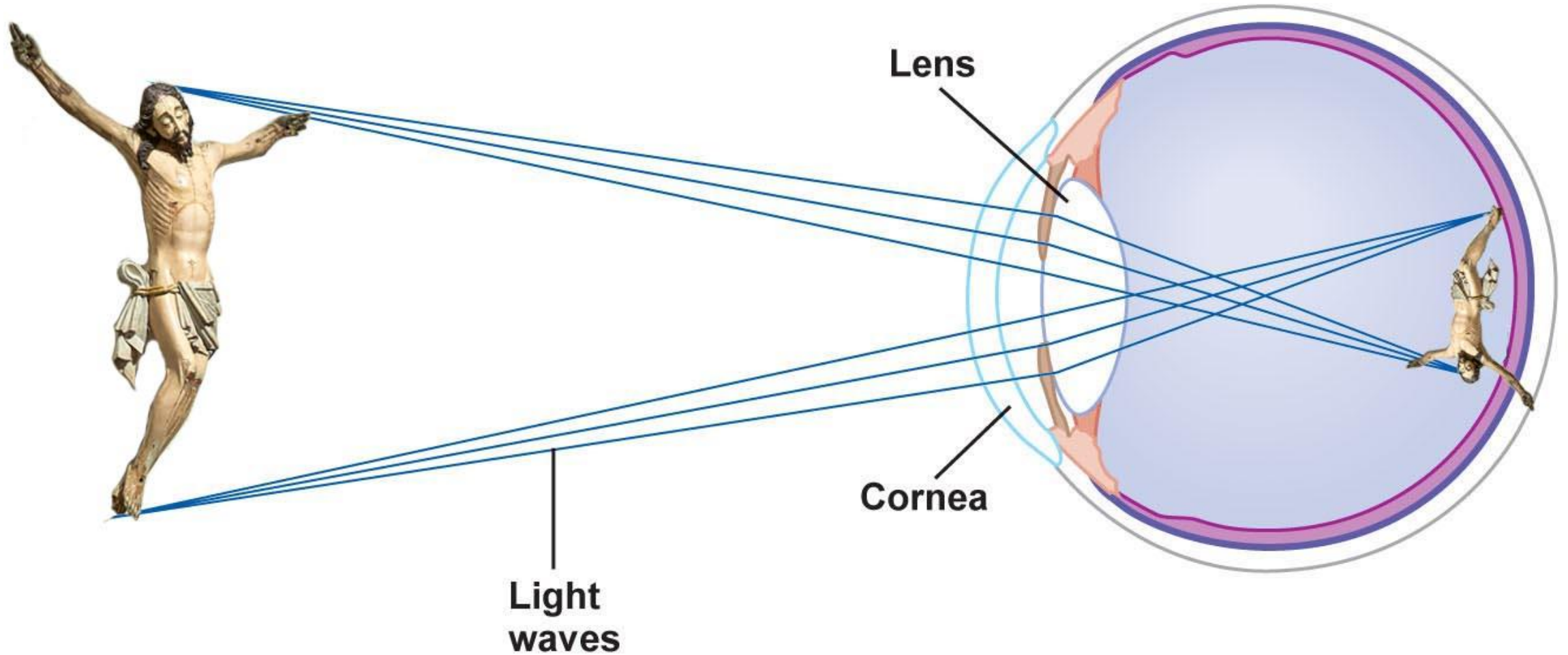




Your brain is creating a blue circle that isn't there.

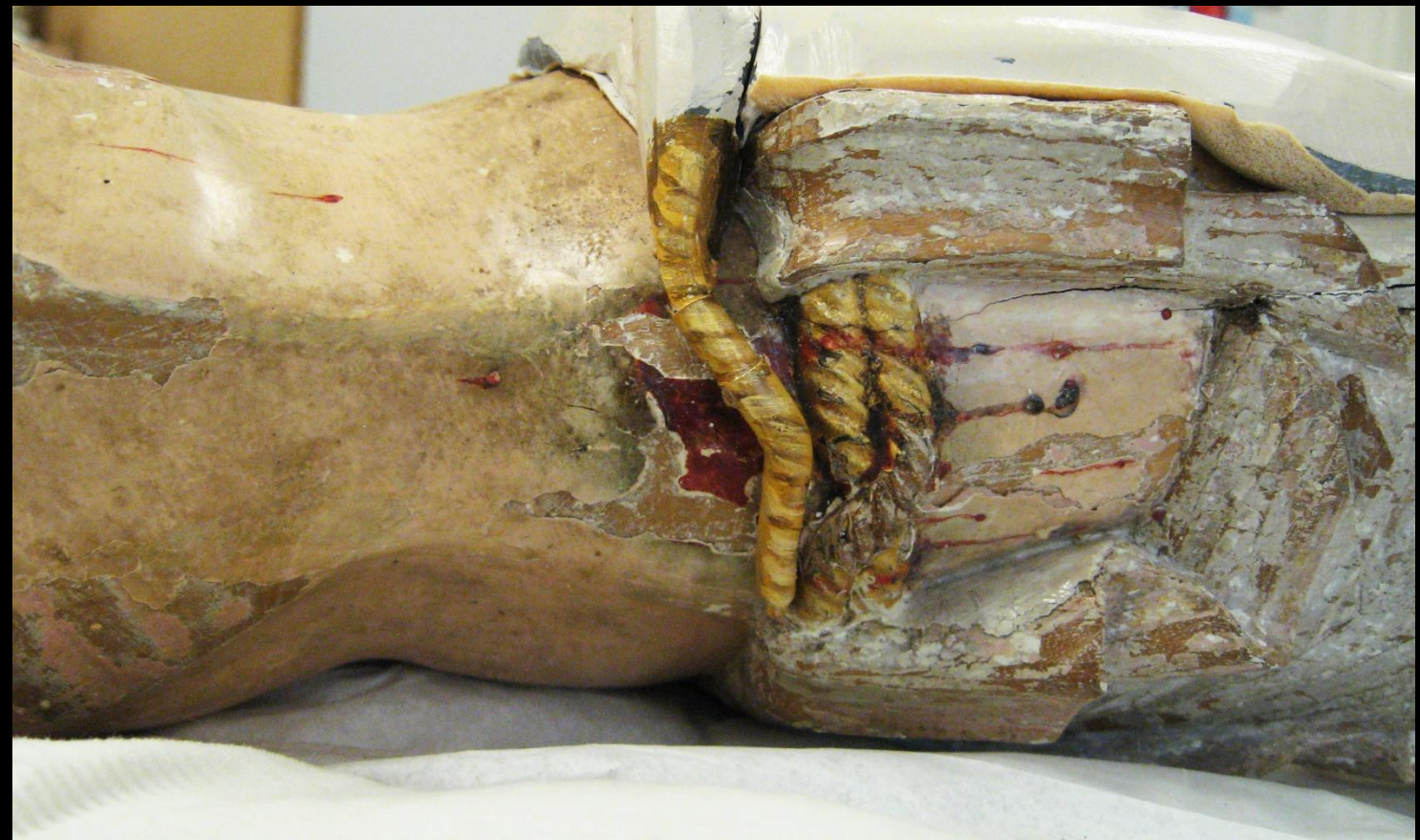


# Reversed image on the retina





The Trickster and camouflage



Hiding in Plain Sight

# Creating a Rope

















## Textures or Folds





It's right ...



Here









