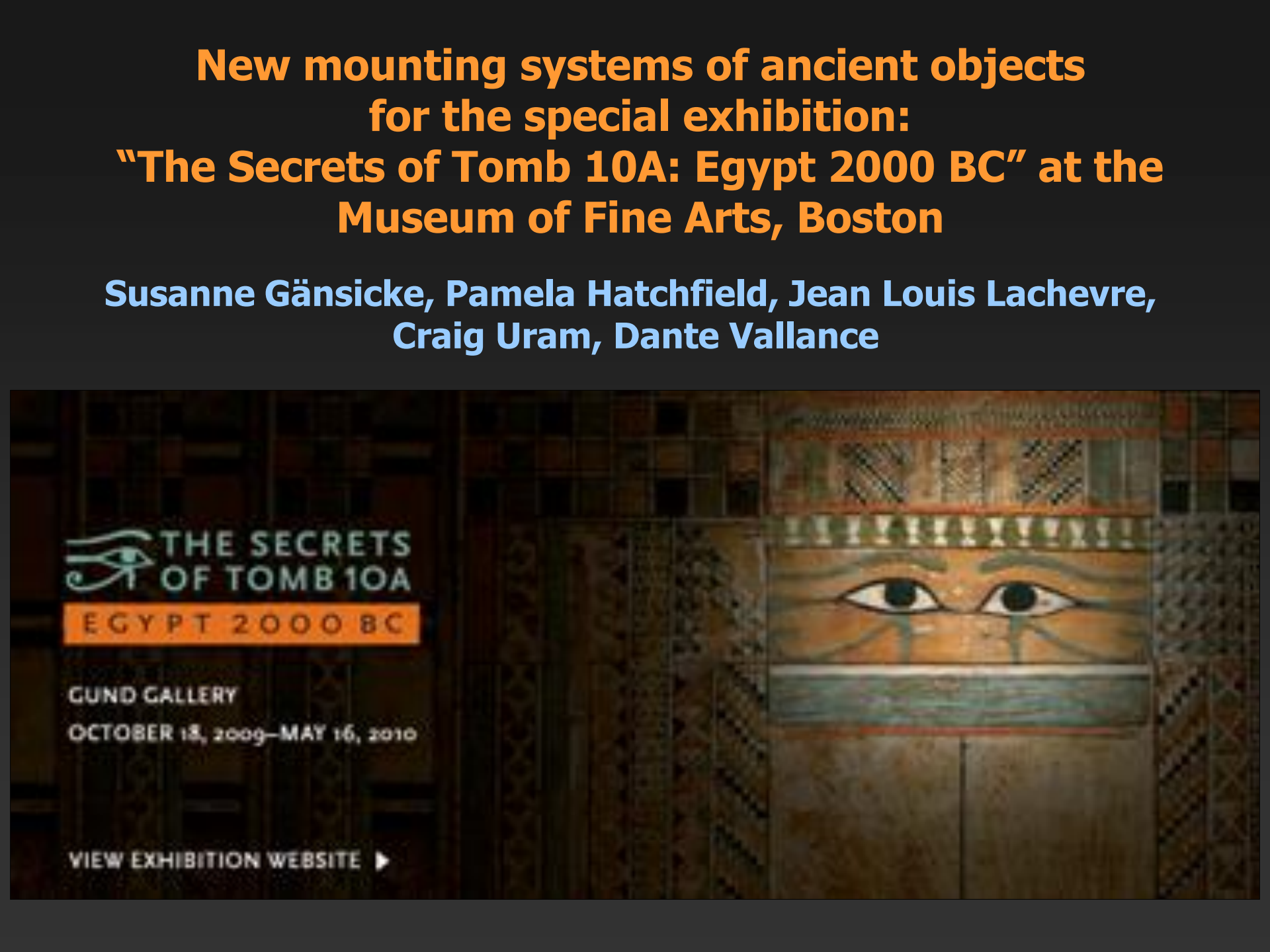


**New mounting systems of ancient objects  
for the special exhibition:  
“The Secrets of Tomb 10A: Egypt 2000 BC” at the  
Museum of Fine Arts, Boston**

**Susanne Gänsicke, Pamela Hatchfield, Jean Louis Lachevre,  
Craig Uram, Dante Vallance**

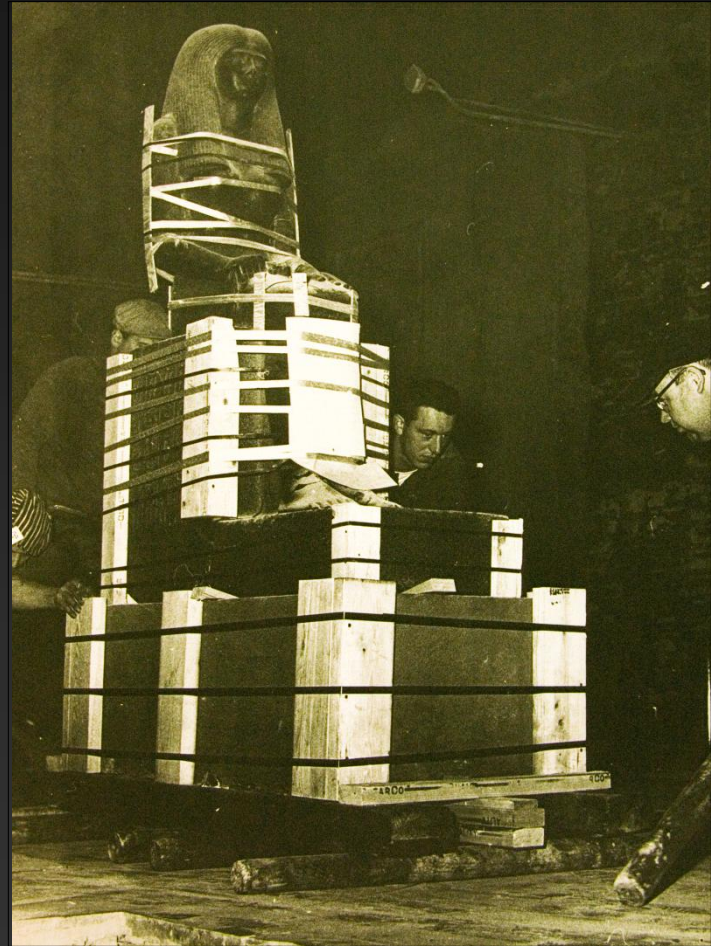
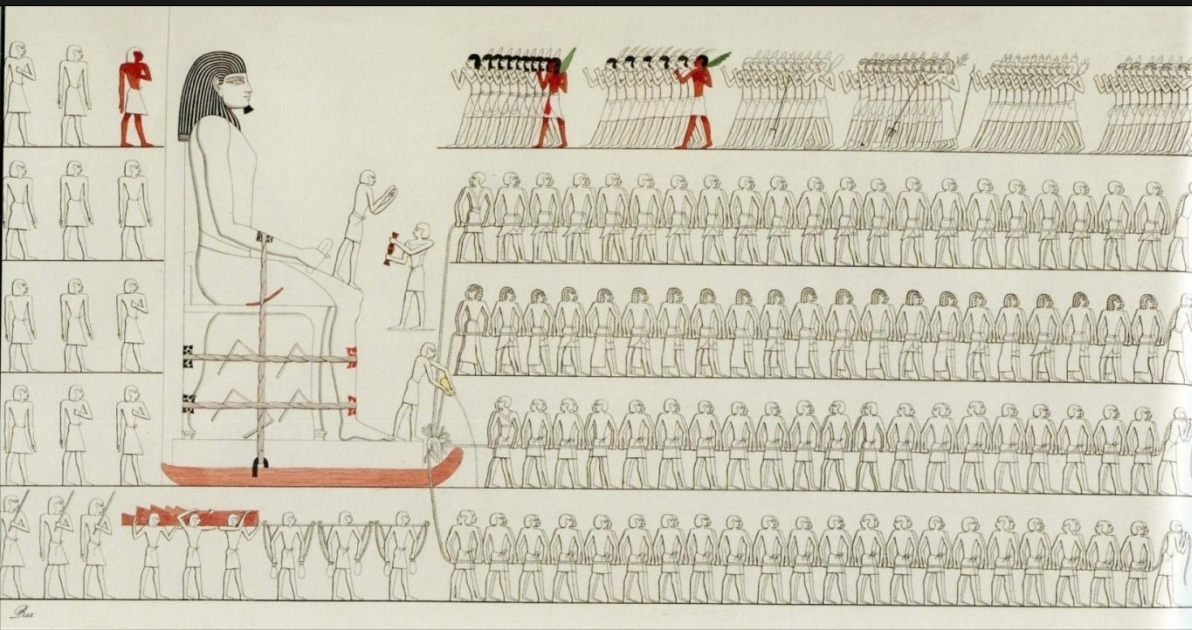


**THE SECRETS  
OF TOMB 10A**  
EGYPT 2000 BC

GUND GALLERY

OCTOBER 18, 2009—MAY 16, 2010

VIEW EXHIBITION WEBSITE ►



# Harvard University-Museum of Fine Arts Expedition 1905-1942



## Cedar coffin panels of Djehutynakht:

- consists of multiple parts, which are joined mechanically
- surfaces are decorated and extremely fragile
- weight up to 1100 pounds per panel



## Statue of Lady Sennuwy:

- carved from granodiorite
- cracked throughout due to weathering
- weight app. 1500 pounds

# Deir el Bersheh



## **Outer coffin of Djehutynakht 21.1822-27**

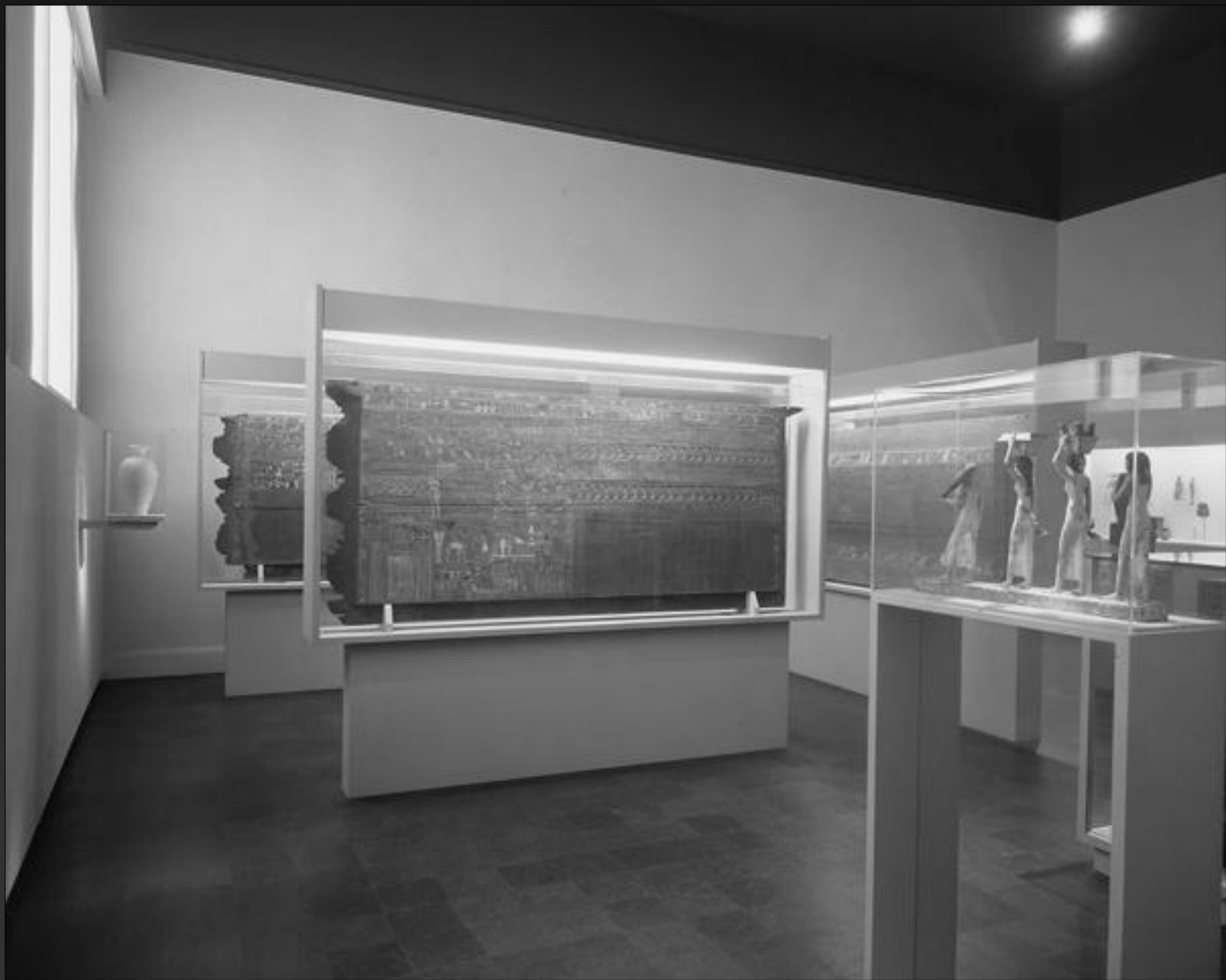
Egyptian, Middle Kingdom, late Dynasty 11 – early Dynasty, 2010–1961 B.C.

Cedar; Height x width: 115 x 263 cm

Findspot: Tomb 10, shaft A (Djehutynakht), Deir el-Bersha, Egypt









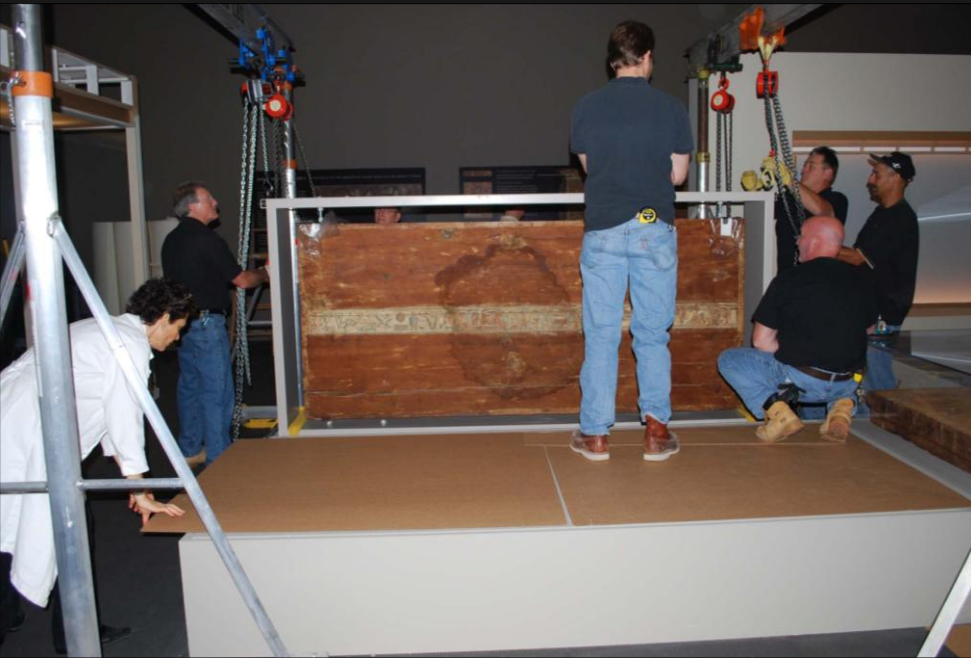
















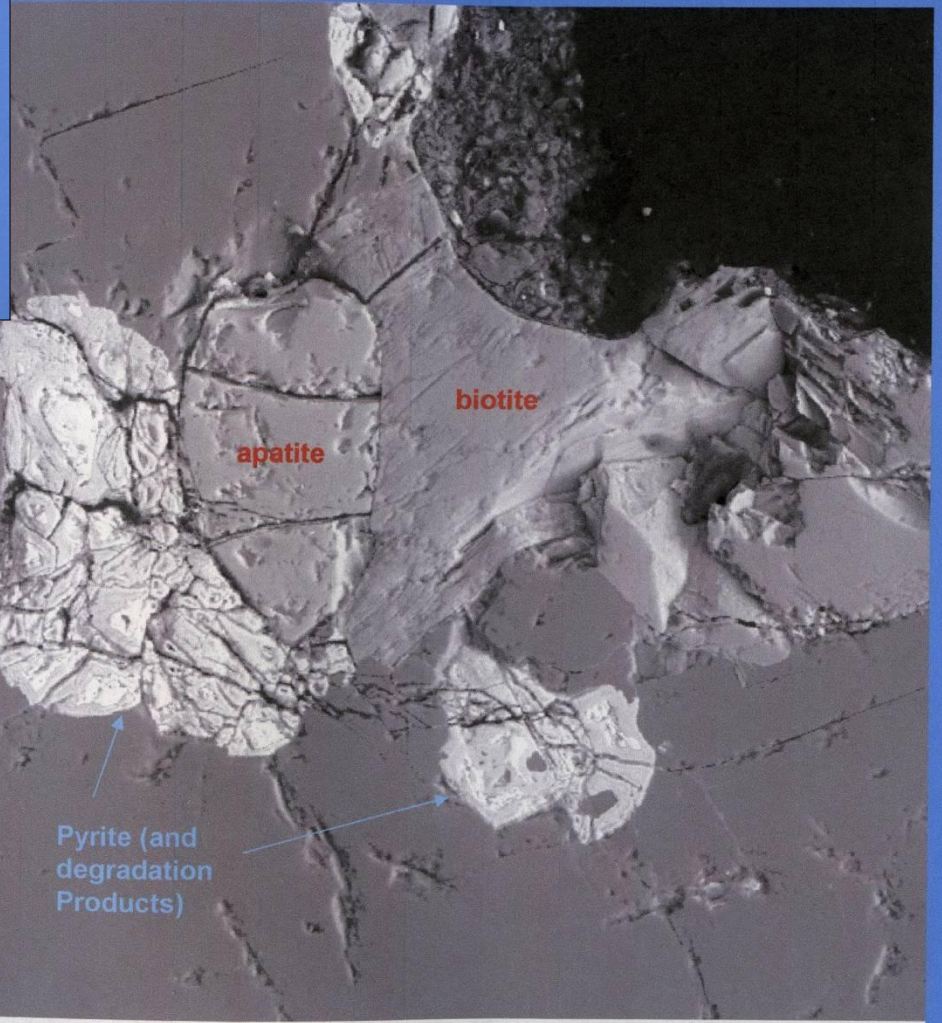
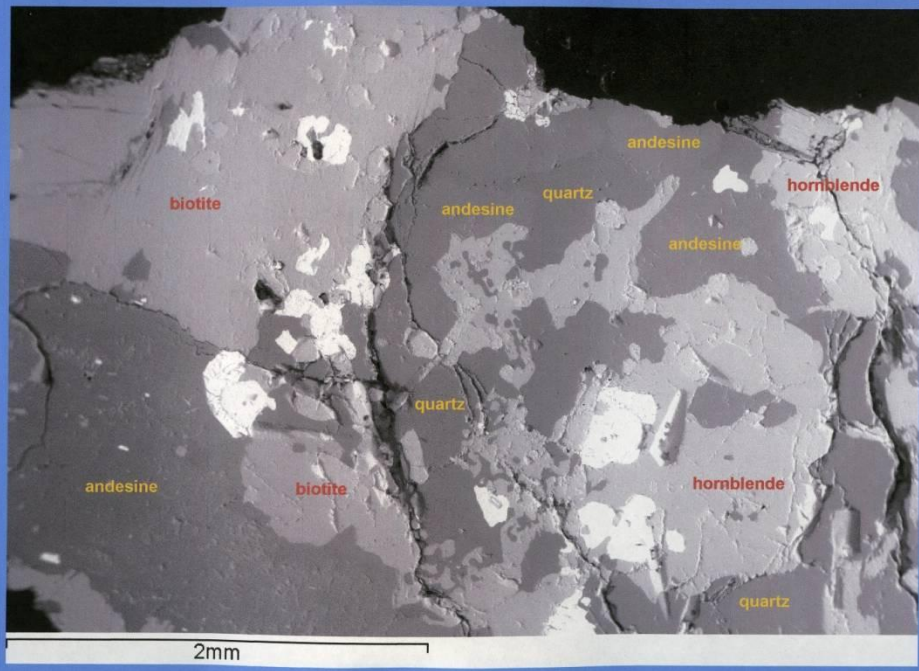
**Statue of Lady Sennuwy  
14.720**

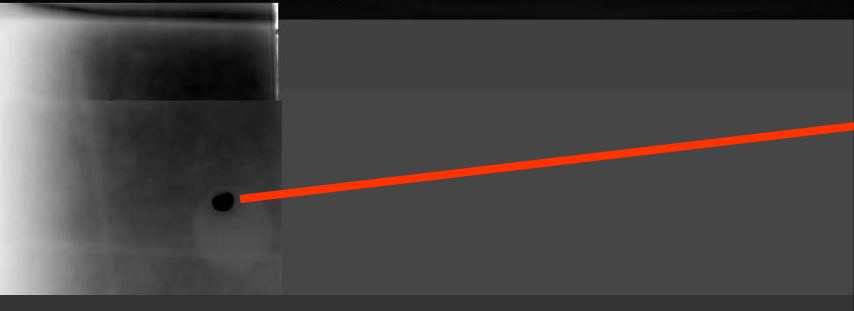
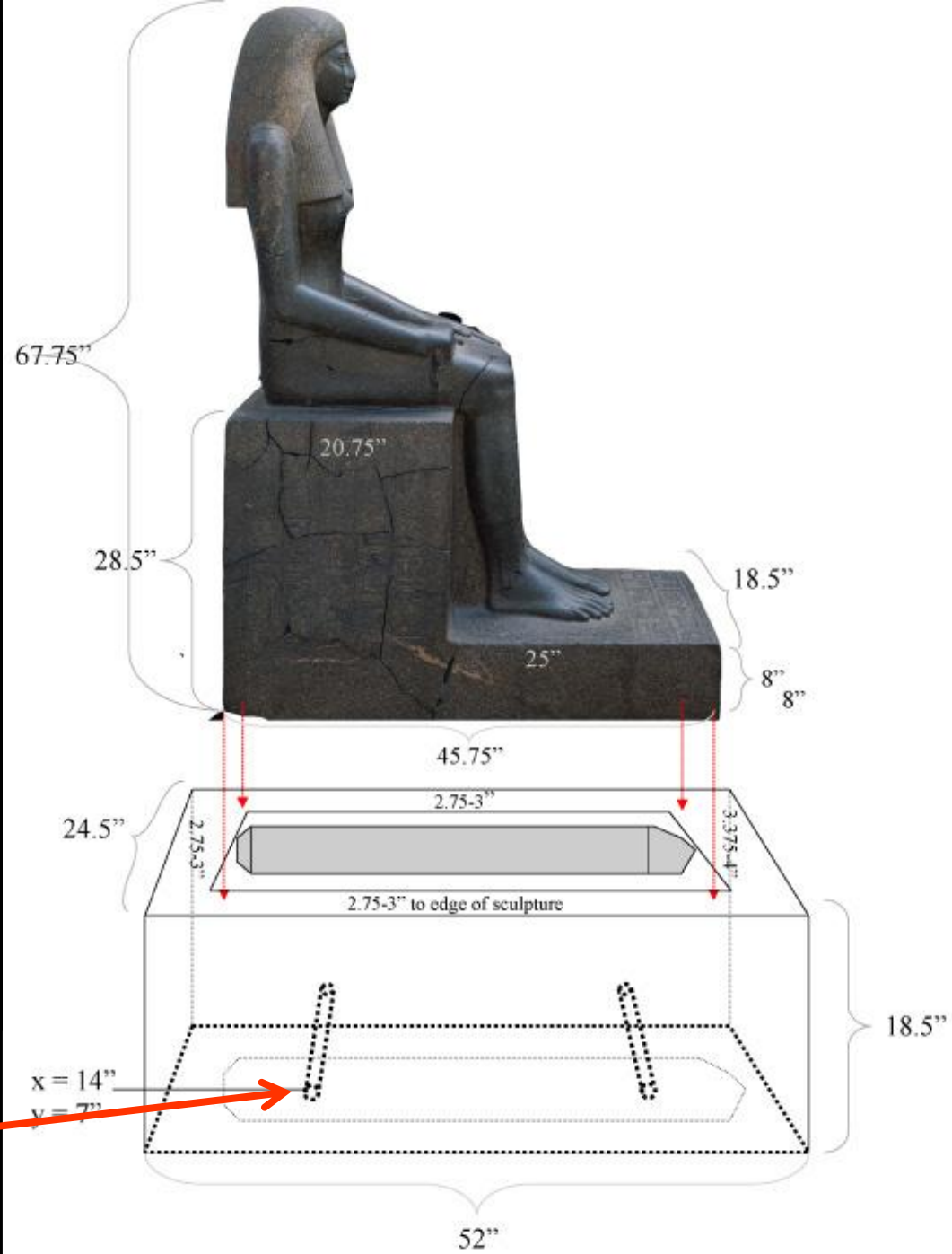
Egyptian, Middle Kingdom,  
Dynasty 12, reign of  
Senwosret I, 1971–1926 B.C.  
Granodiorite

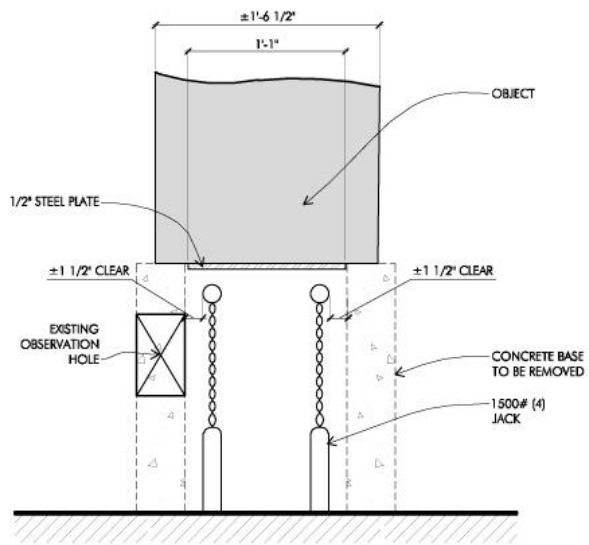
Overall (steel pallet and  
object): 170.2 x 116.2 x  
47 cm, 2700 pounds

Tumulus K III, hall A, Kerma,  
Nubia (Sudan)









1 SECTION  
SCALE: 1/4" = 1'-0"

STATUE OF LADY SENNIWY

348 GOODENOUGH AVE  
N 1617 5th ST  
S 1000 1st ST  
COLUMBIA, SC 29201  
CBI CONSULTING, INC.  
COLUMBIA, SC 29201

SHEET No. SK-4  
PROJ# 08125

CHECKED CEB  
DATE 01-14-09  
REVISION 02-11-09

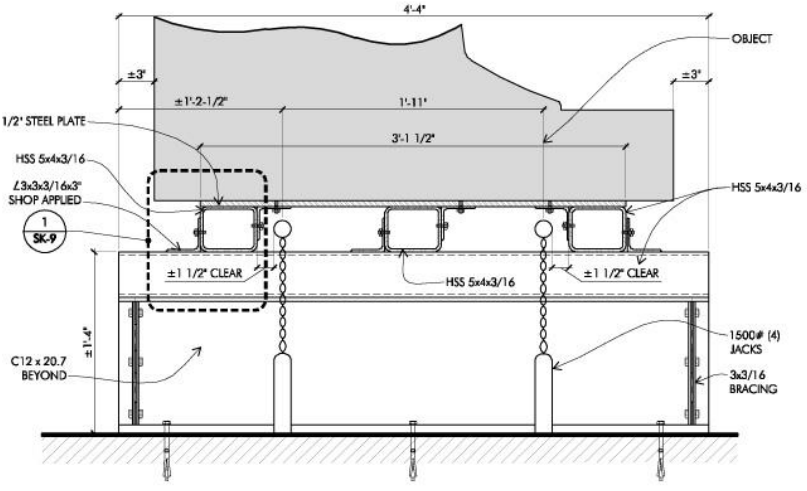
DESCRIPTION SECTION











**1 SECTION**  
SCALE: 1/4" = 1'-0"

SHEET No. **SK-7**  
 PROJECT # 08125  
 DESCRIPTION SECTION  
 CHECKED CEB  
 DATE 01-14-09  
 REVISION 02-11-09  
 STATUE OF LADY SENIUNYU  
 CBI CONSULTING INC.  
 1400 BROADWAY, 4TH FLOOR, NEW YORK, NY 10018  
 TEL: 212-244-2111  
 FAX: 212-244-2111  
 WWW.CBI-CONSULTING.COM



