

The **NATIONAL MUSEUM OF AFRICAN ART** presents *Visionary*

Over 300 works from 30 artists, representing 27 African countries. Open now at NMAFA.



In 2017 The NMAFA's relatively small museum staff launched the most ambitious in-house exhibition project in over a decade, called **Visionary**

African "Sword currencies"



"Kissi" Pennies



- NMAFA created Casework, mounts, lighting, text & labels, & audio-visual effects in its 6,000 foot gallery space.
- Many of the 360 objects on exhibition in **Visionary**, were displayed in "dense display", to showcase more of the museum collection, this required complex mount & case fabrication, conservation, collection care & organization and introduced challenges in lighting design.
- One 17 foot dense display case held over 80 ferrous metal objects. The challenge? How to mount these objects safely and quickly in an aesthetically attractive way.

The solution: Mounts using hundreds of Neodymium, Nickel Plated, Rare Earth Magnets. Labeled N42 these Axially Magnetized cylindrical magnets are considered the strongest



N42
12.9 lb
N

D7X0
7/16" dia. x 1" thick
Nickel Plated
Axially Magnetized

A photograph of a single cylindrical magnet and a coin (likely a dime) on a wooden surface. To the right of the magnet are labels: 'N42' in a green box, '12.9 lb' in a grey box, and a small icon of a battery with 'N' above it.

K&J MAGNETICS, INC.

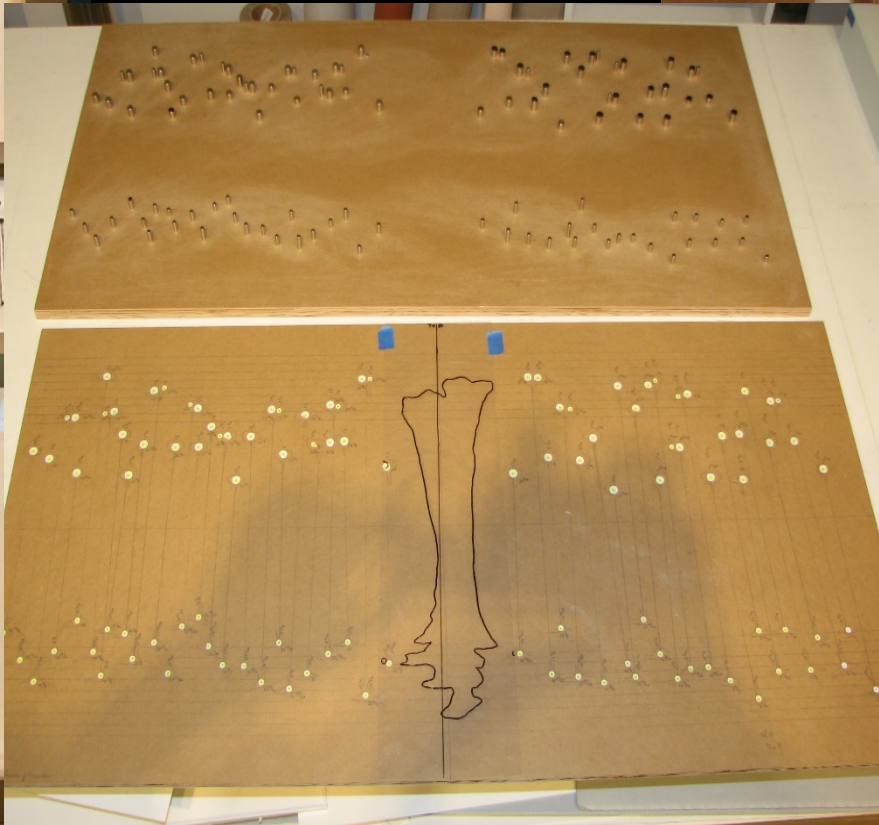


**Your Source for
The World's Strongest Magnets
Neodymium Rare Earth**

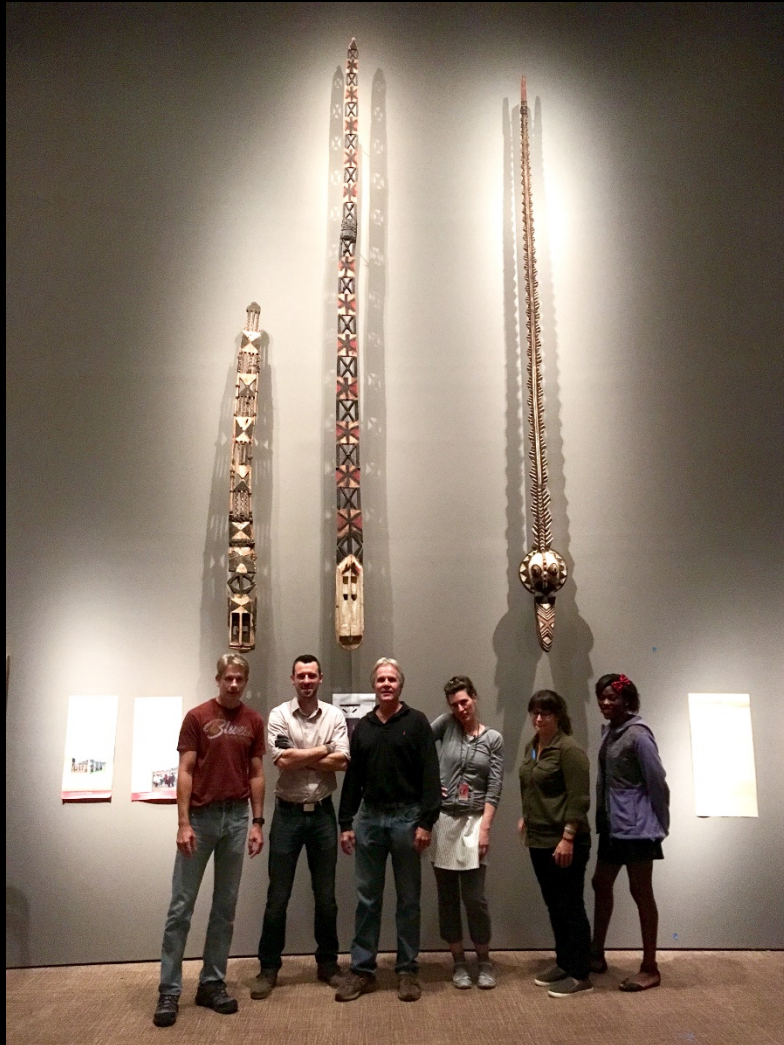
www.kjmagnetics.com
contactus@kjmagnetics.com
order by phone 888-SHOP-KJM
or 215-766-8055

Joe Magneato®

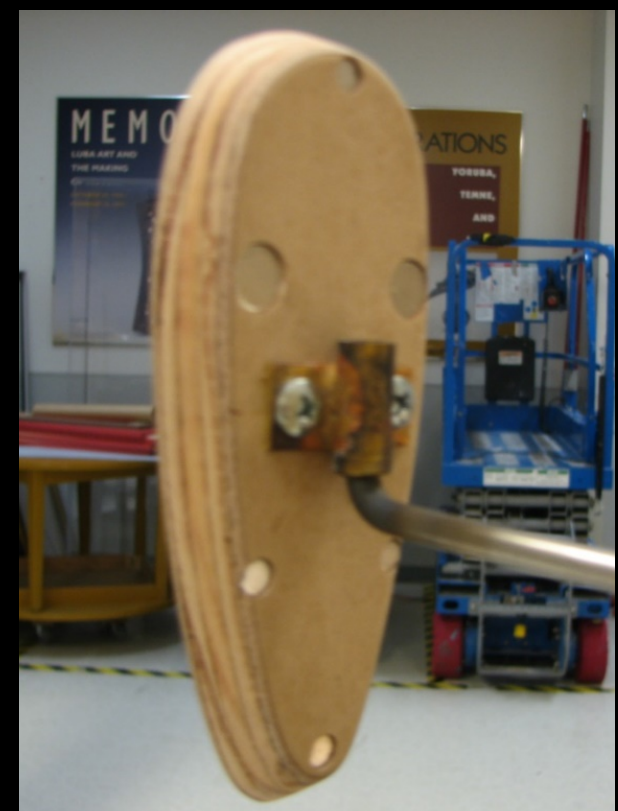
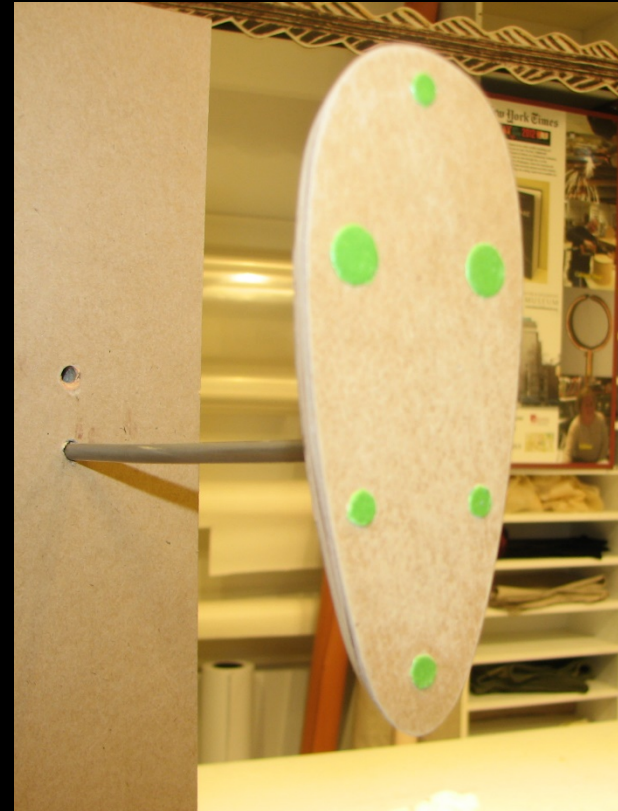
The mounts required innovations for the hundreds of cylindrical neodymium magnets such as plotting for the magnetic cylinder's drilled holes and mount shapes engineered with NMAFA's Computer Numerical Control Router, (CNC machine).

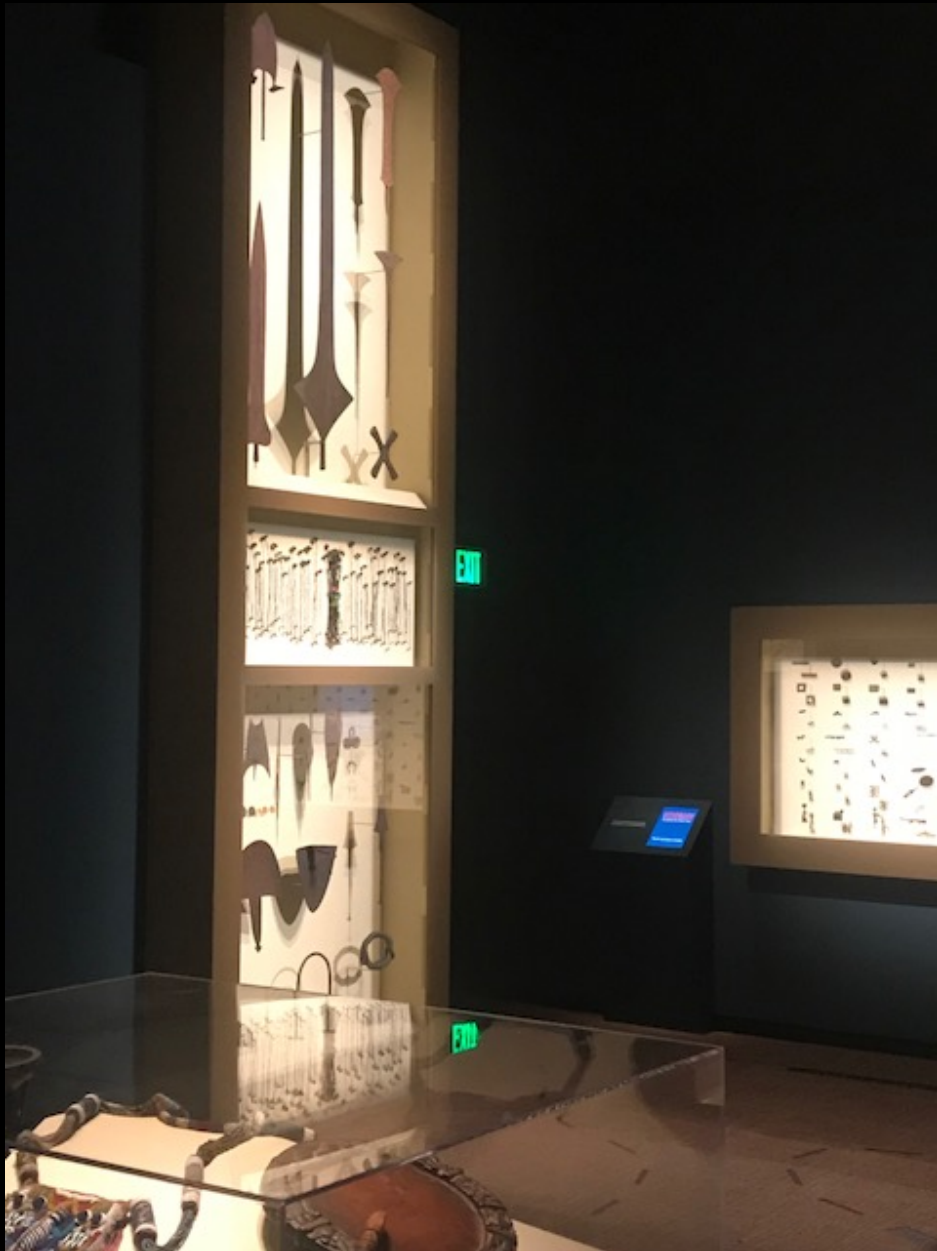


Our National Museum of African Art installation Team & the 18 foot case for sword currencies & currency



Once the material is cut and the magnets inserted into the holes, an armature is attached and acrylic felt is placed over the magnets for protection





Some of the magnetic mounts extended from the wall in pairs, connecting to the back of the object



Winner of several prestigious awards, Smithsonian
NMAFA Presents the Award winning “Visionary”

