

Indianapolis Museum of Art – Material Analysis Sheet

Material:

Cellulose Propionate Window Gel

Cellulose Propionate



Oddy:

Fail

N = 3; measured 3/2016 to 7/2016



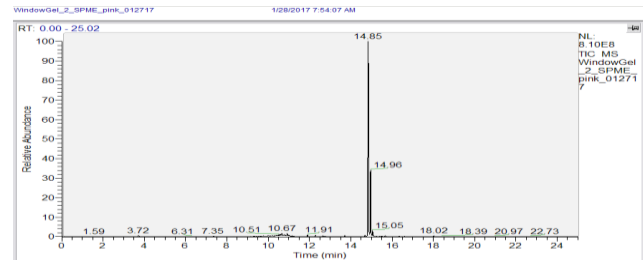
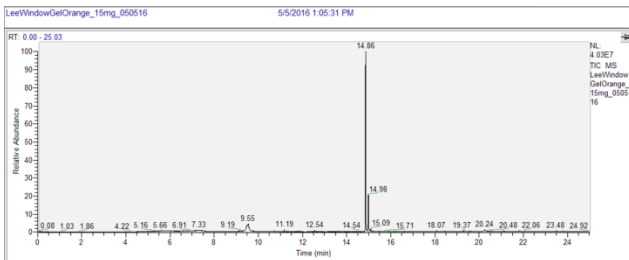
Notes: Black spots on edges of coper.

Evolved-Gas Analysis:

EGA reveals the presence of propylene glycols at 9.5, and phosphate plasticizers at 14.85 and 19.98

SPME Analysis:

SPME shows derivatives of piperidnone around 10.50, and phosphate plasticizers at 14.85 and 14.96.



Microchemical Tests:

Azide: **P**

Chromatropic Acid: **P**

Iodide/Iodate: **F-M**