



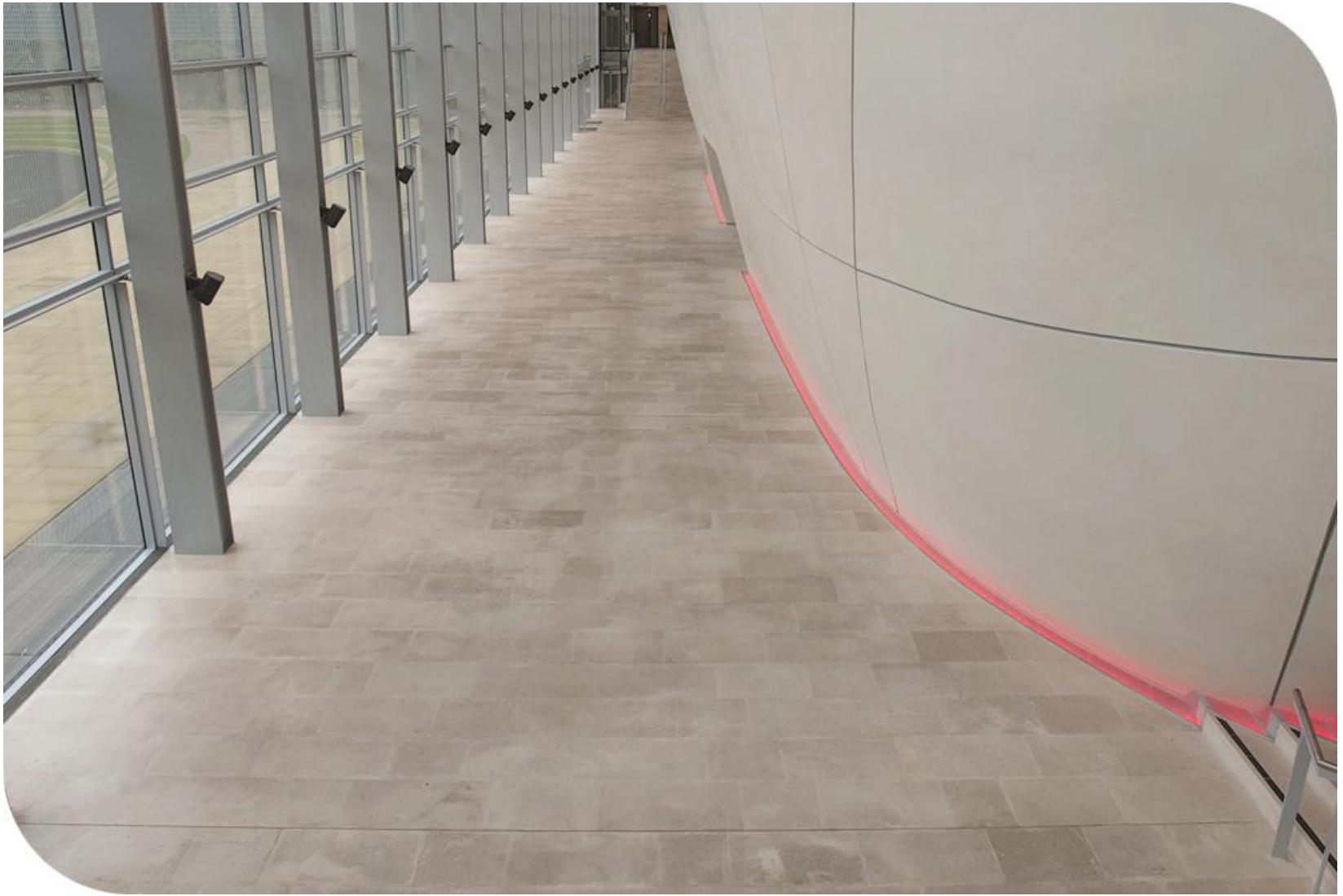
**NATURAL
HISTORY
MUSEUM**



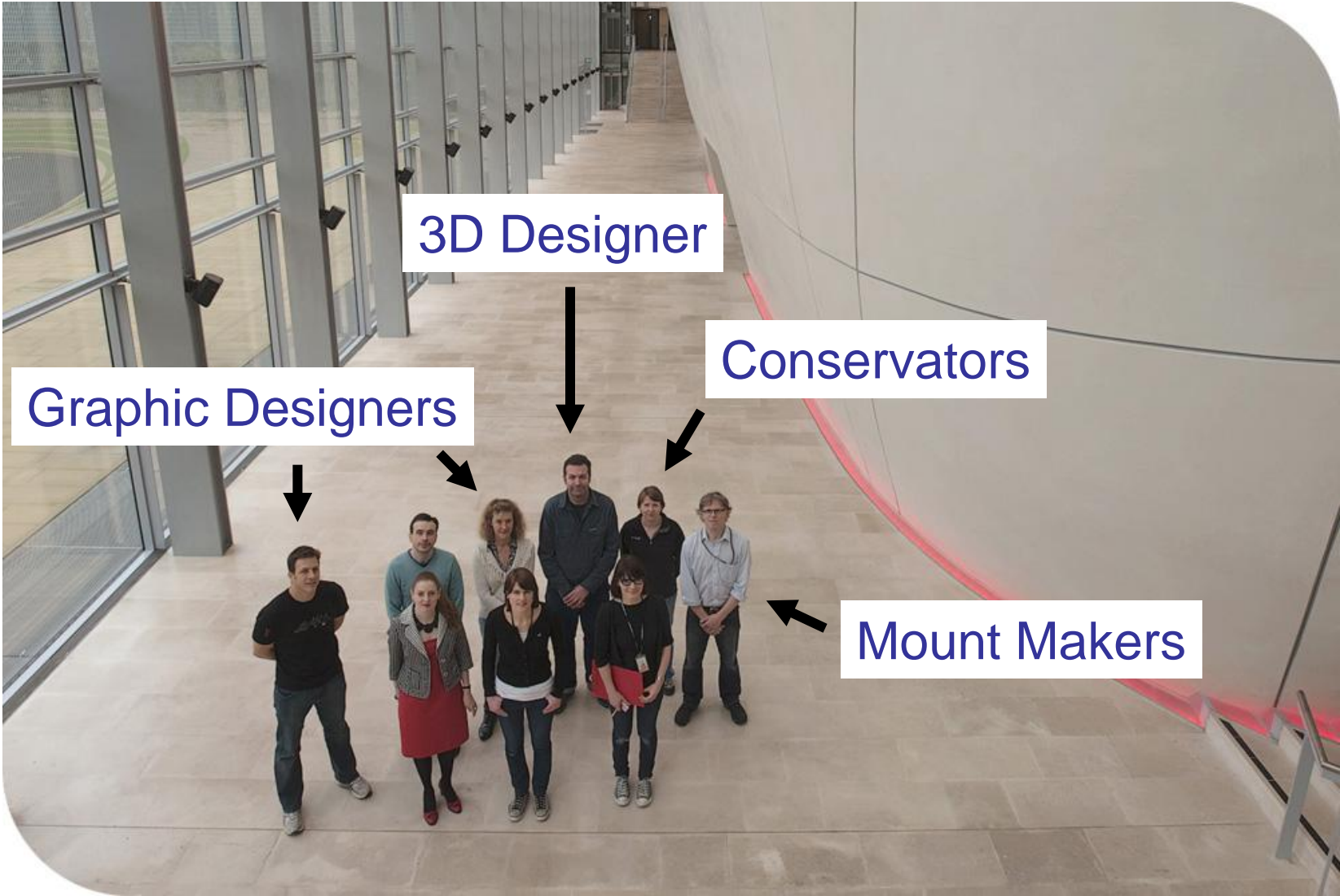
Layering Life

Mount making for the Darwin Centre

Helen Weir
Exhibition Specialist







3D Designer

Conservators

Graphic Designers

Mount Makers





Painters & Joiners

Special Effects





History of the Museum

Opened in 1881

70 million specimens

350 scientific staff

Five scientific departments:

Botany

Entomology

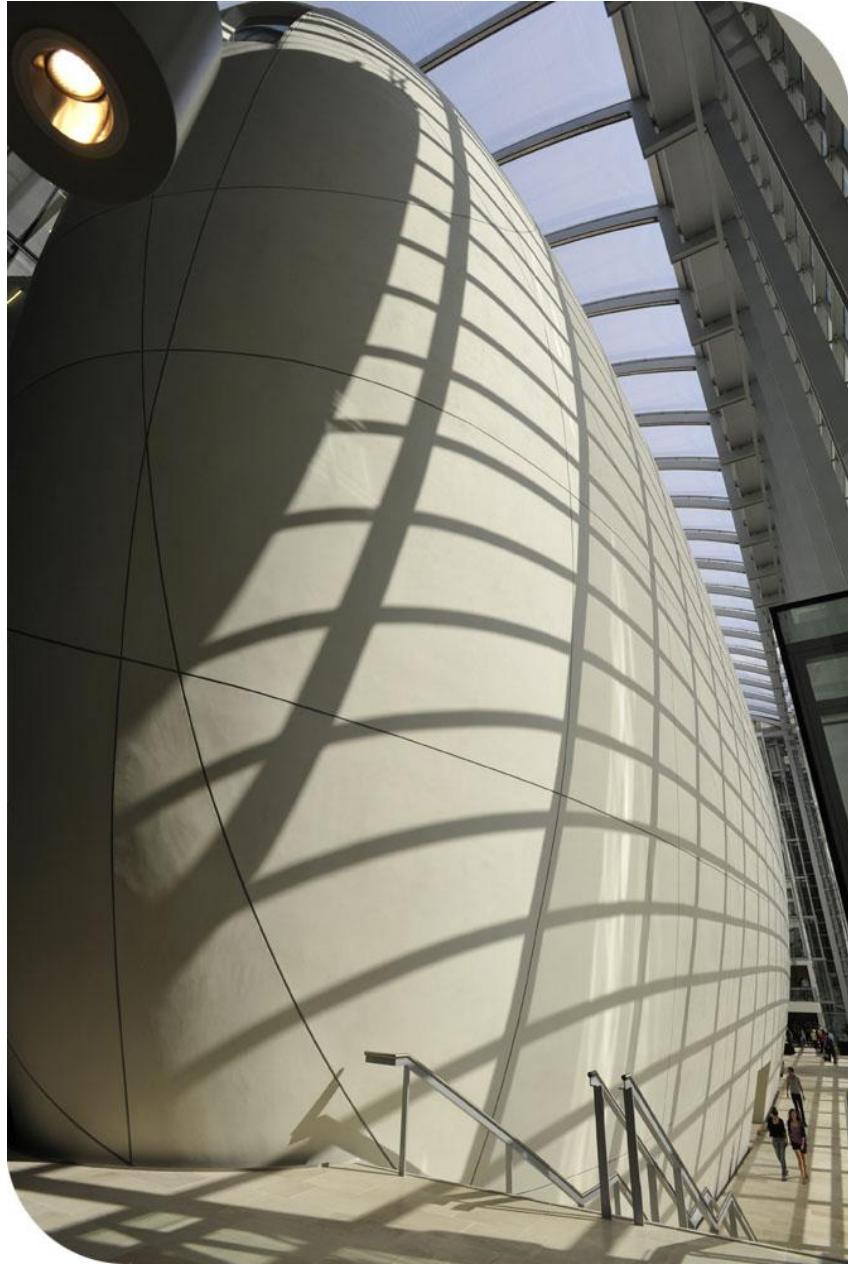
Mineralogy

Palaeontology

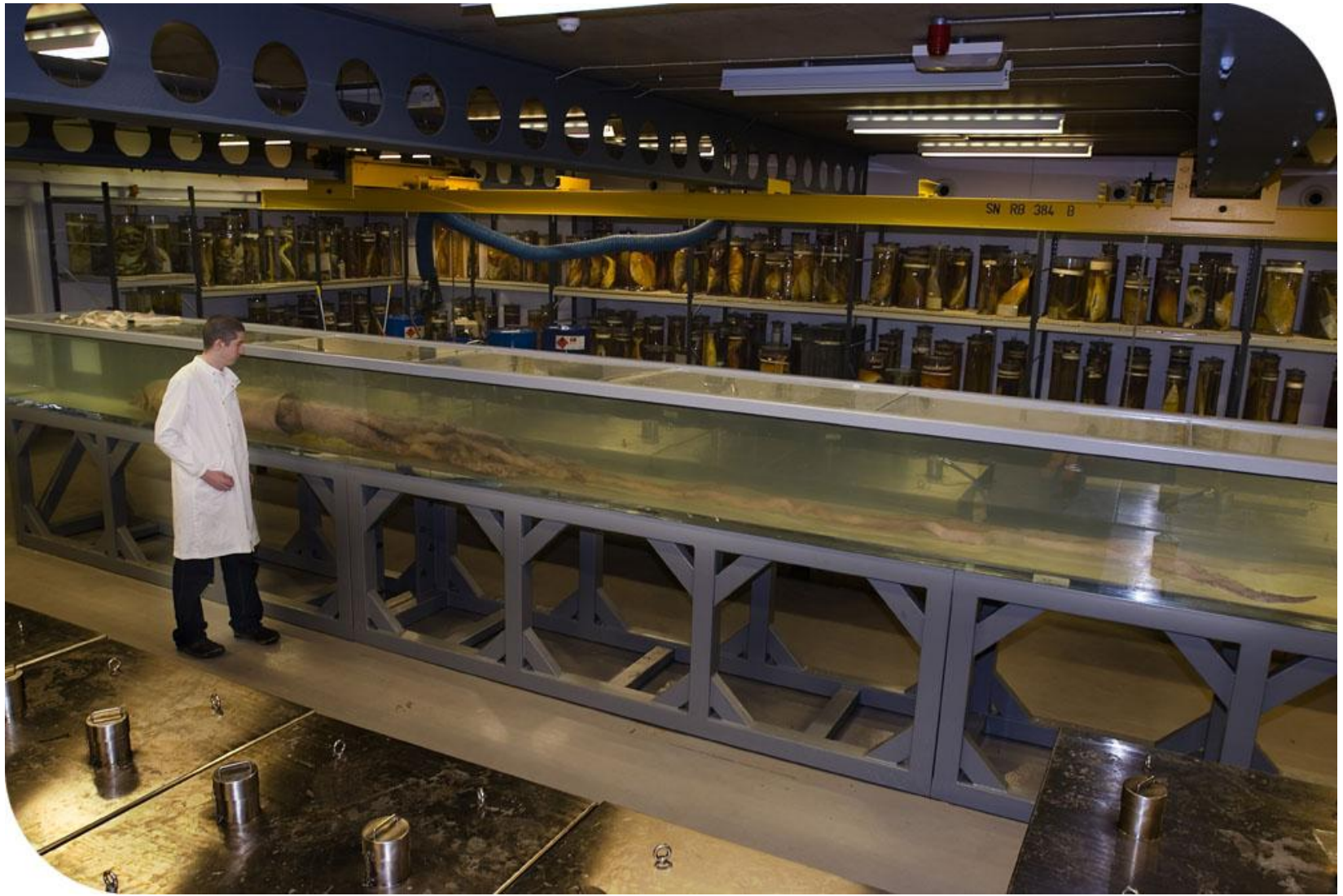
Zoology

















The cocoon

More than just a giant storeroom, the cocoon protects the collection of plant and insect specimens. More than 20 million specimens are housed here, ranging from tiny wasps to giant redwoods.

The cocoon is a safe, controlled environment. The stable temperature and humidity keep the specimens in the best possible condition for the future.

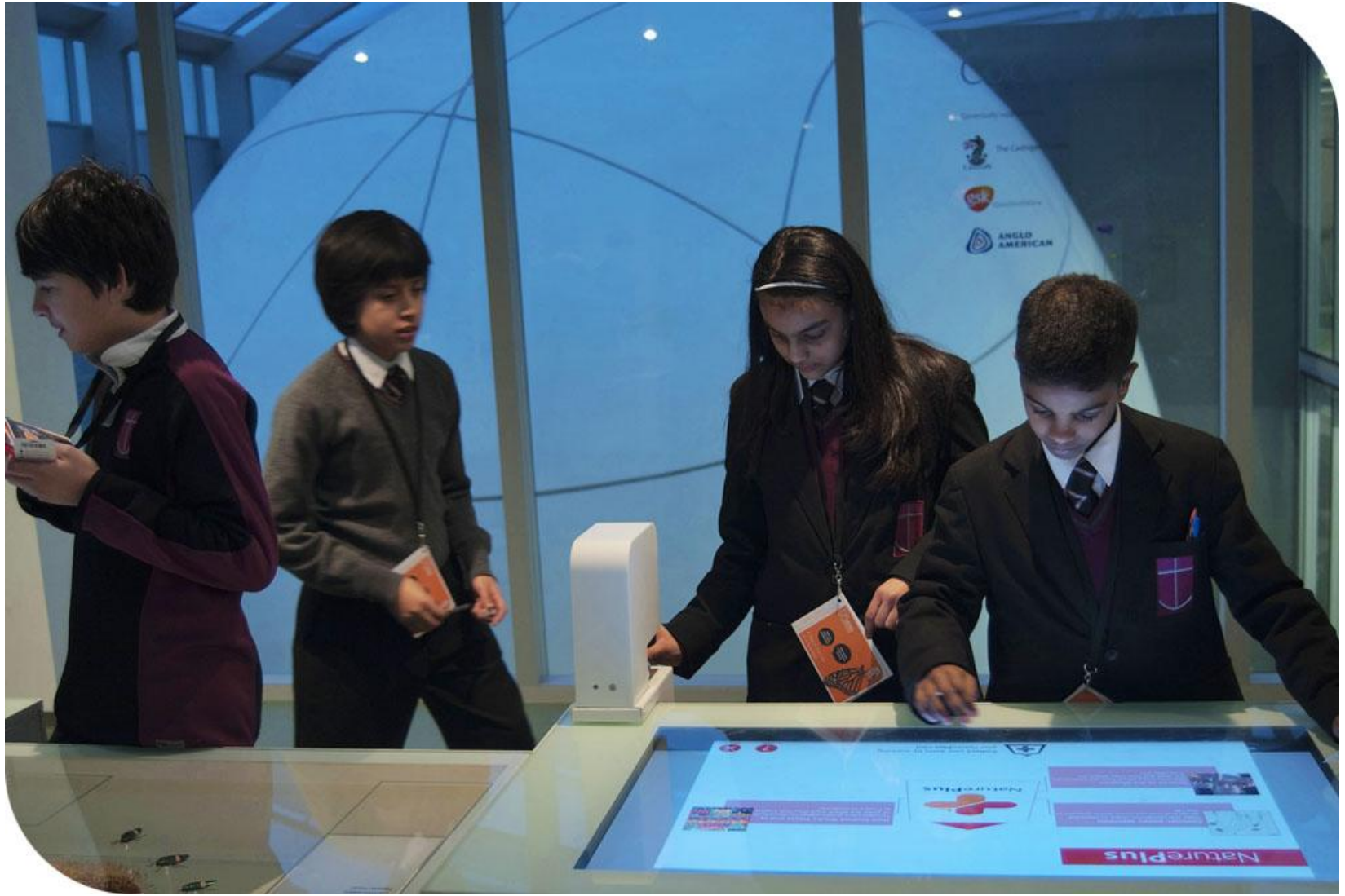


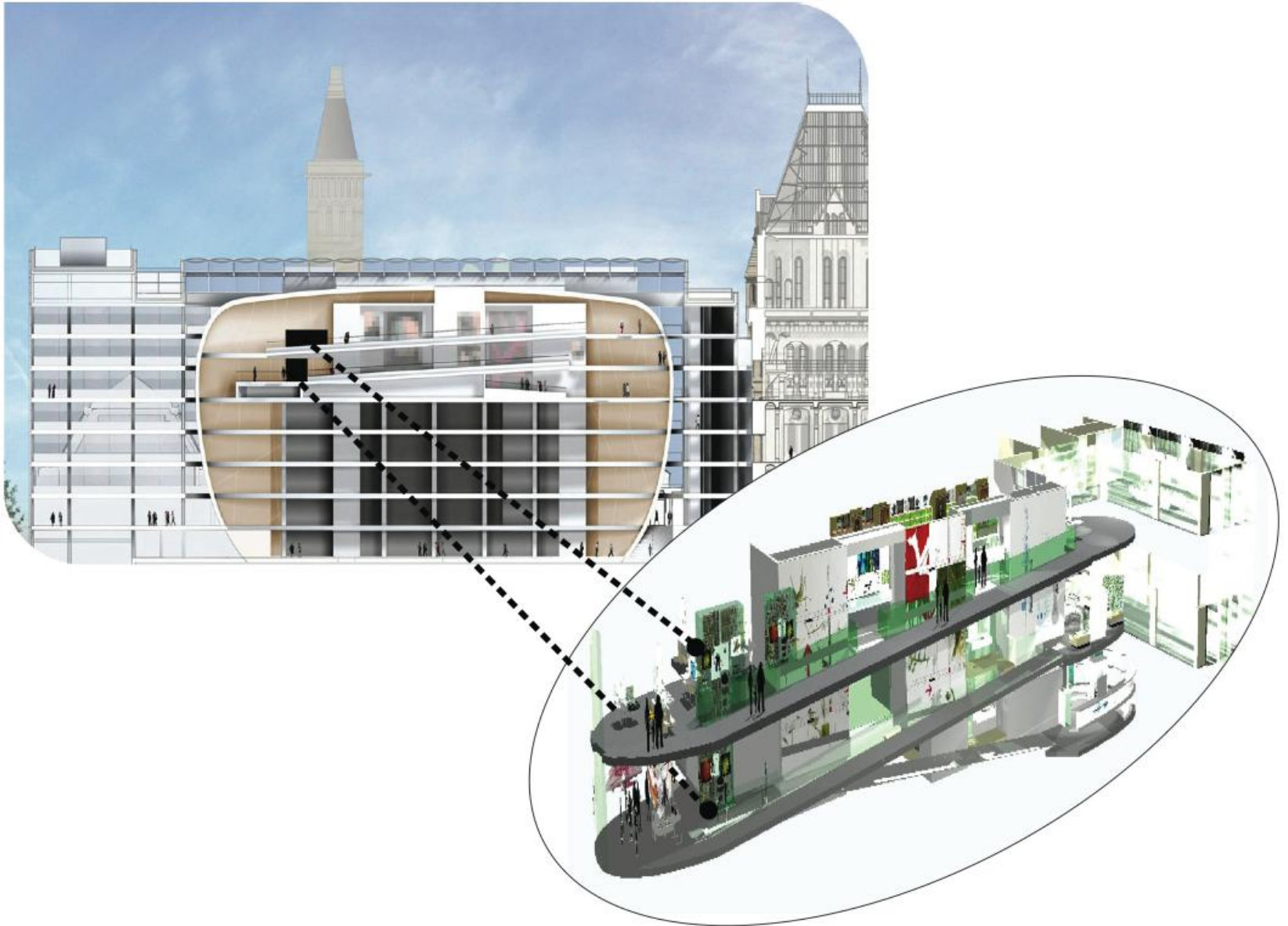














Preparation & Mocking up

Mount Making

Installation

Preparation & Mocking up

Floating

Hovering

Invisible

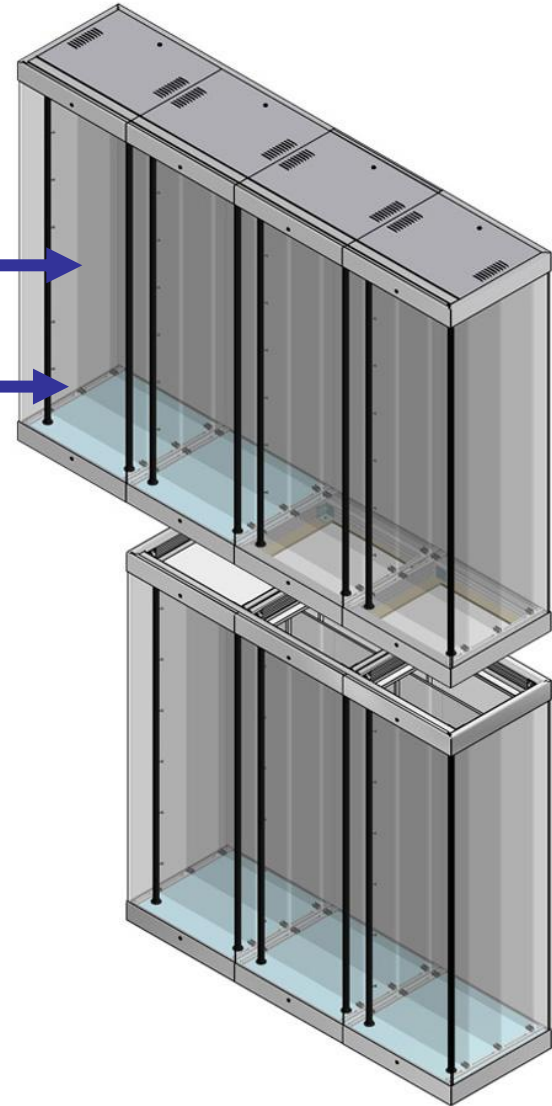


Upper Level

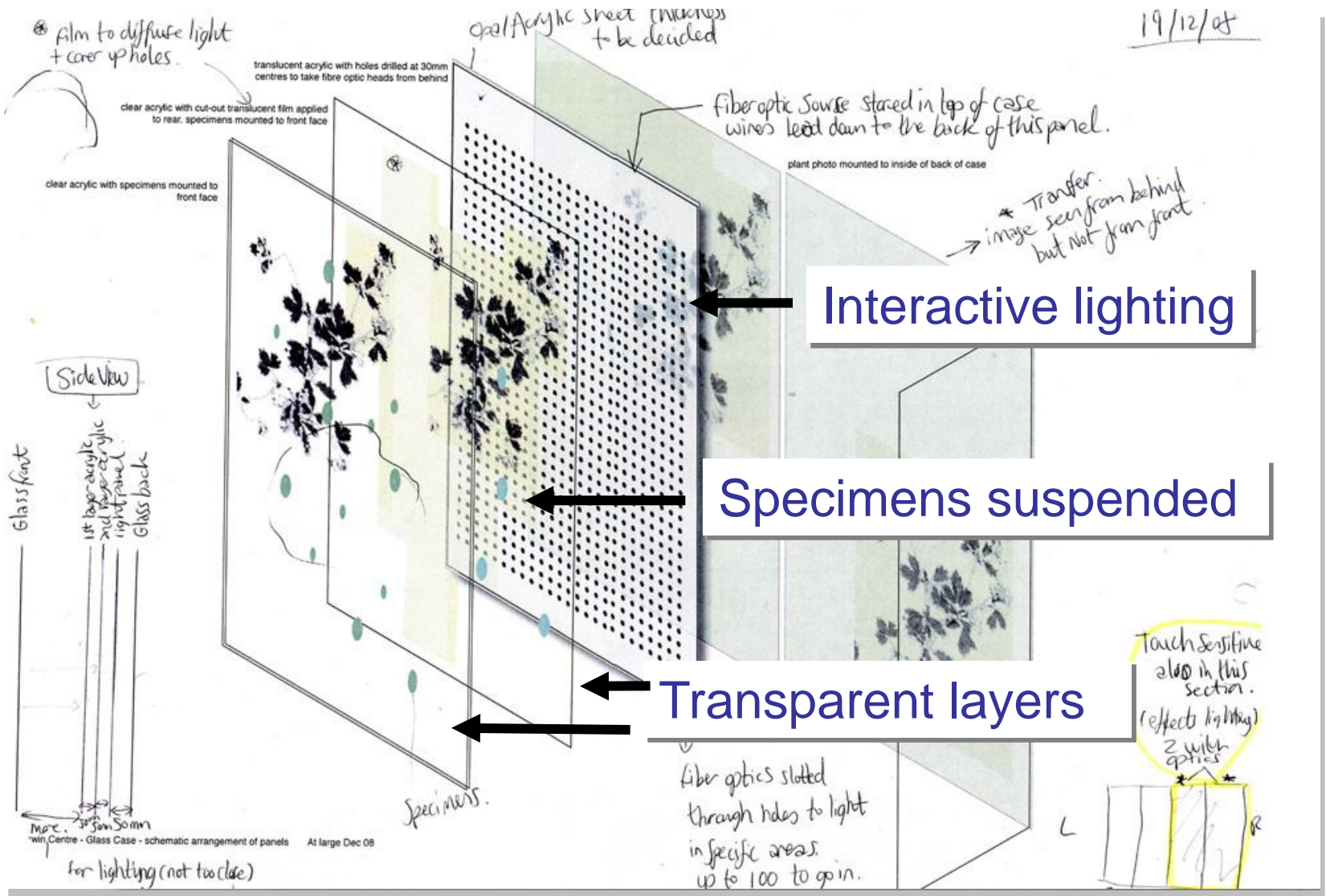
20mm Acrylic panels

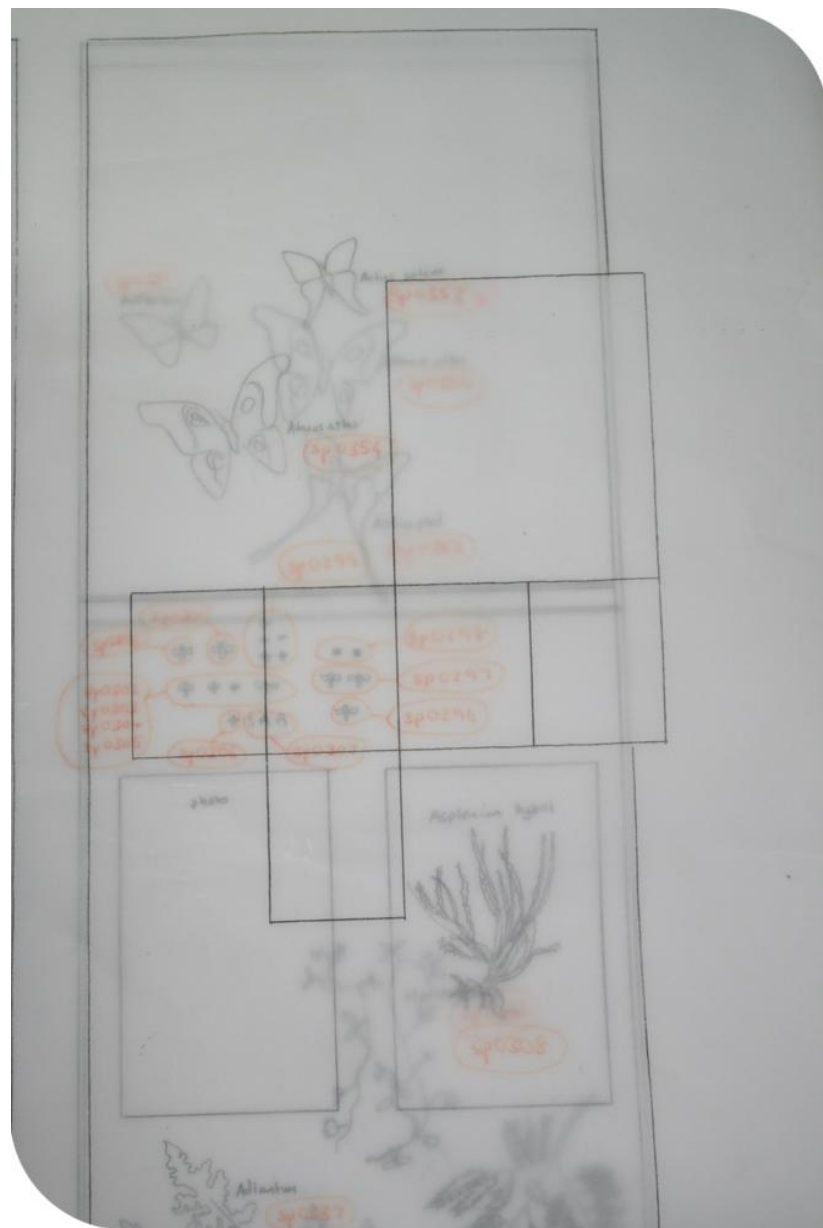
Tracking

Lower Level

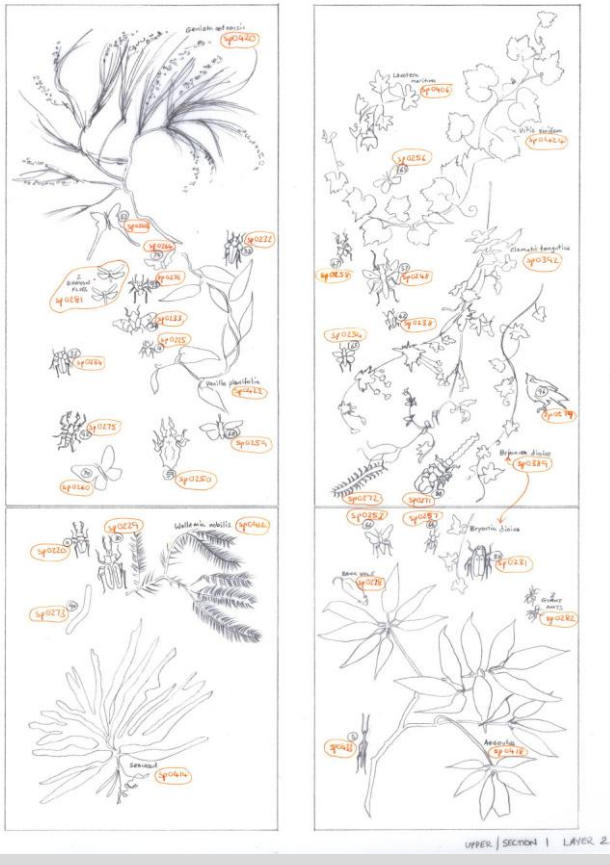


19/12/08

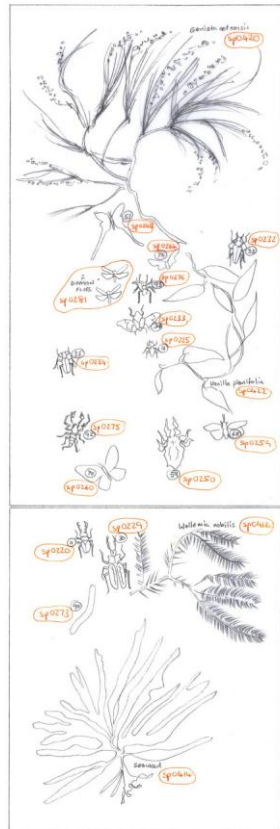




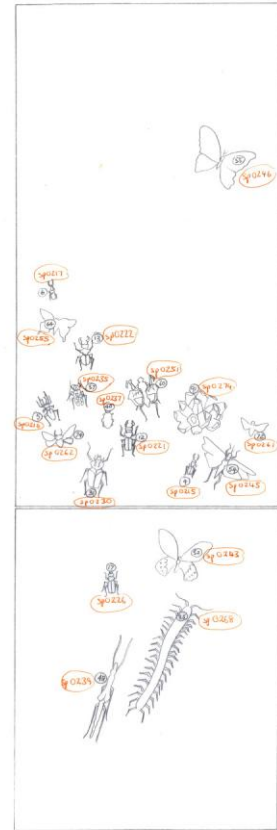
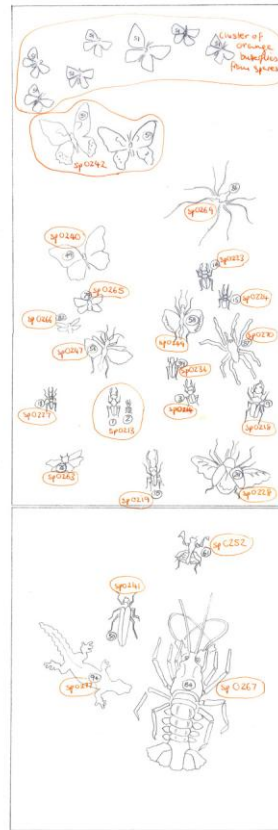
Background specimens



Background specimens

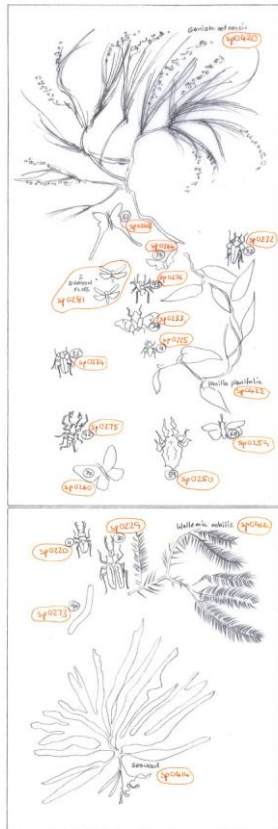


Content specimens

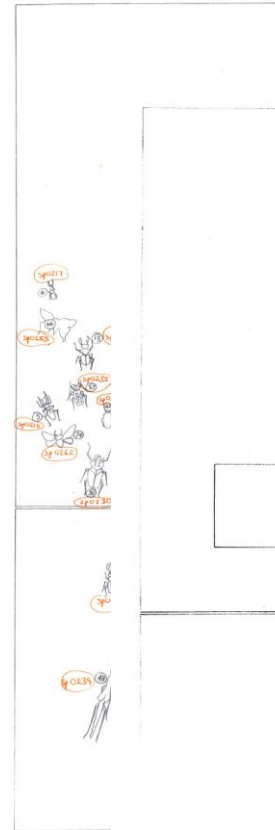
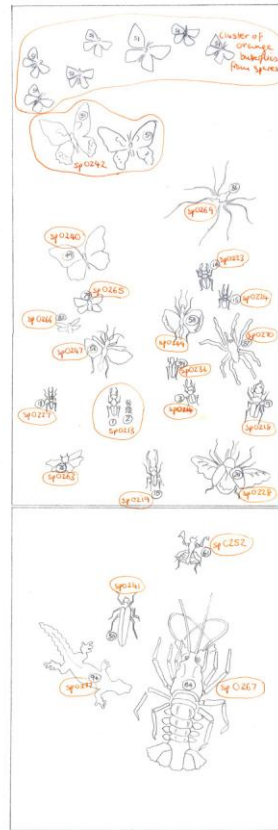


UPPER / SECTION 1 / LAYER 1

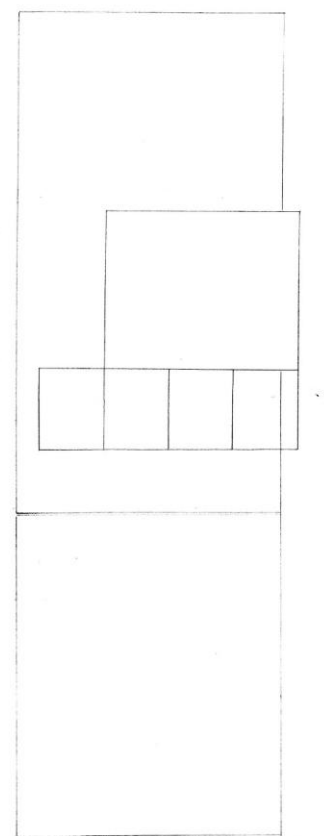
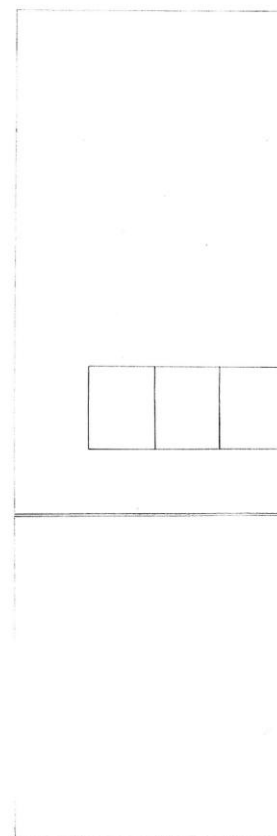
Background specimens



Content specimens



Door graphics

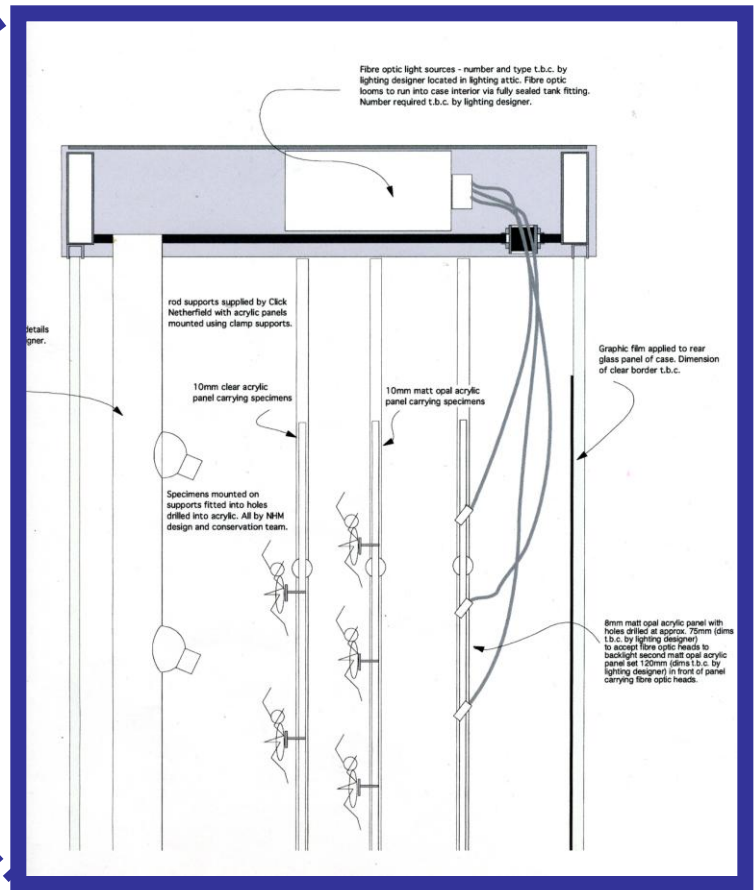
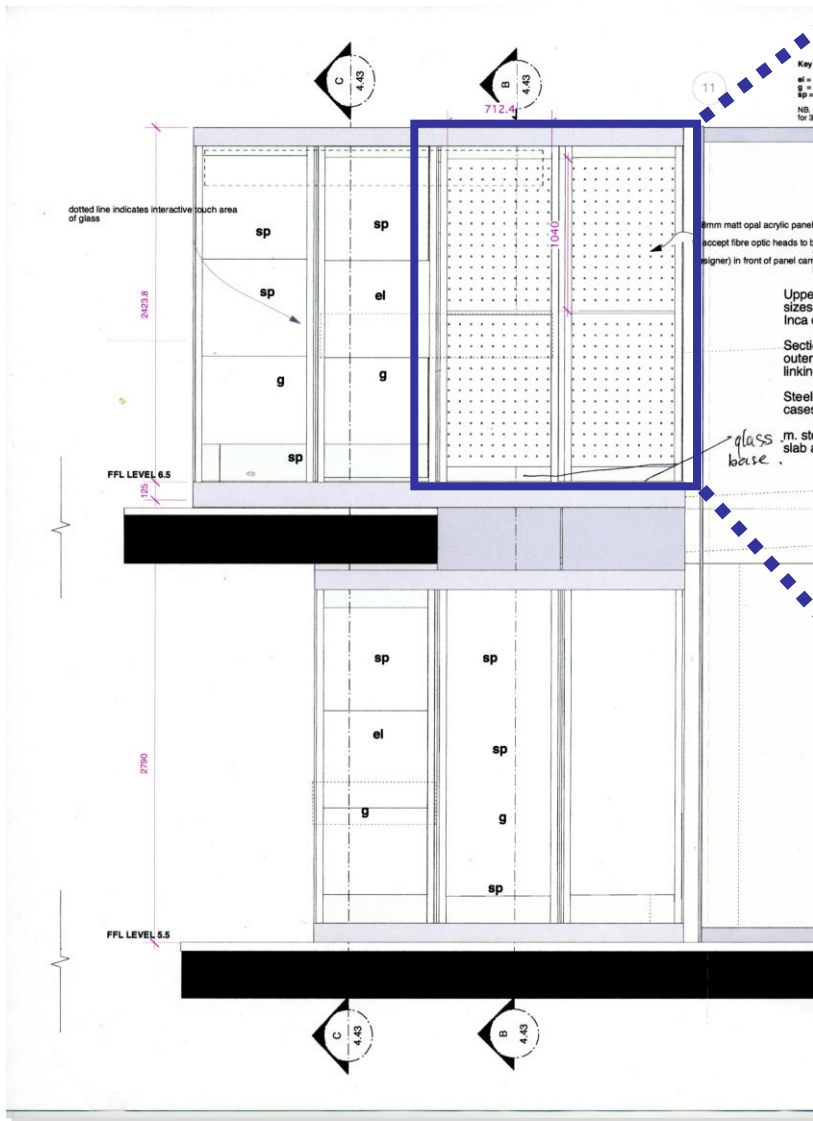


UPPER / SECTION | GLASS DOORS









Side view close up











Mount making

Botany Specimens

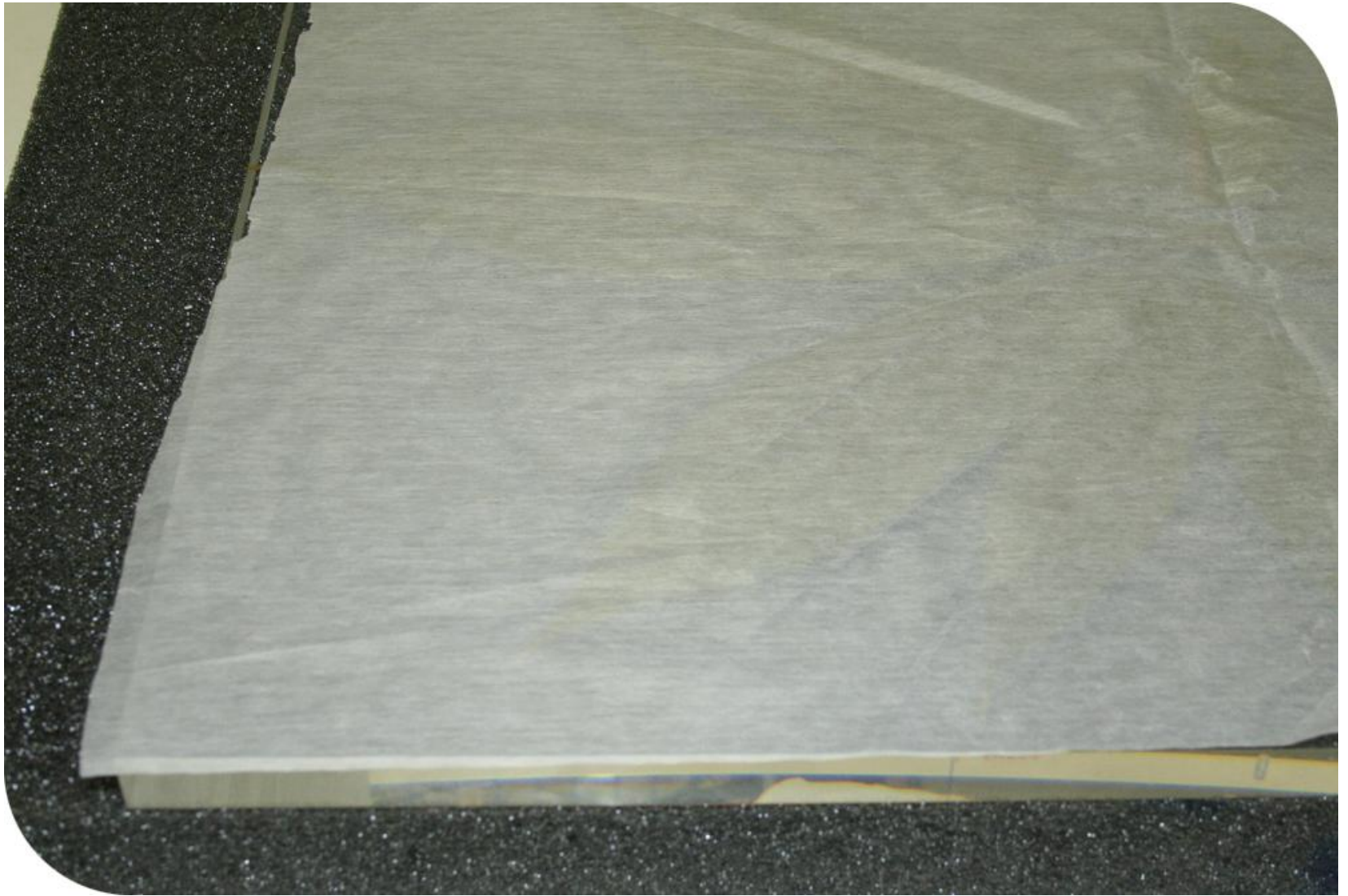


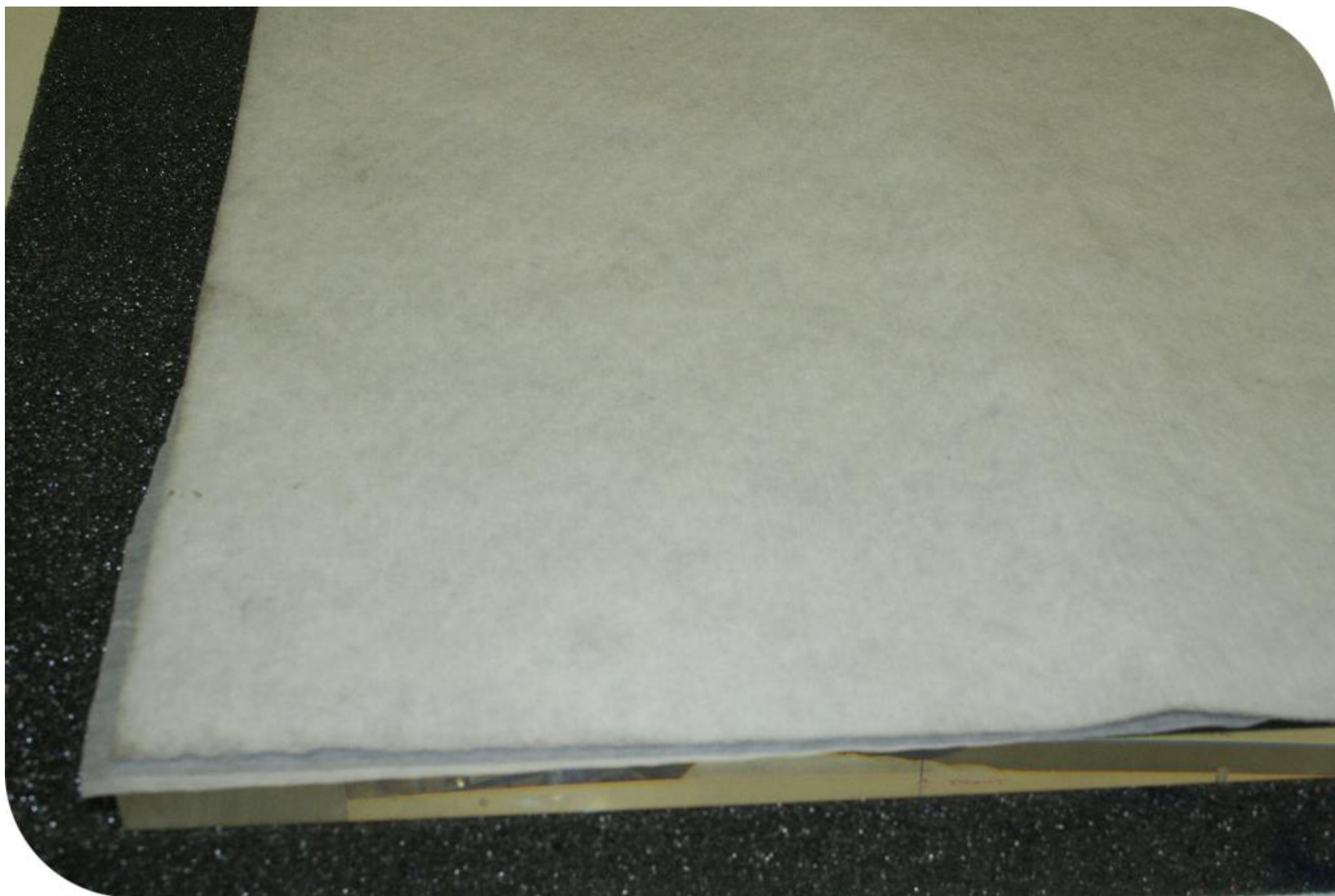


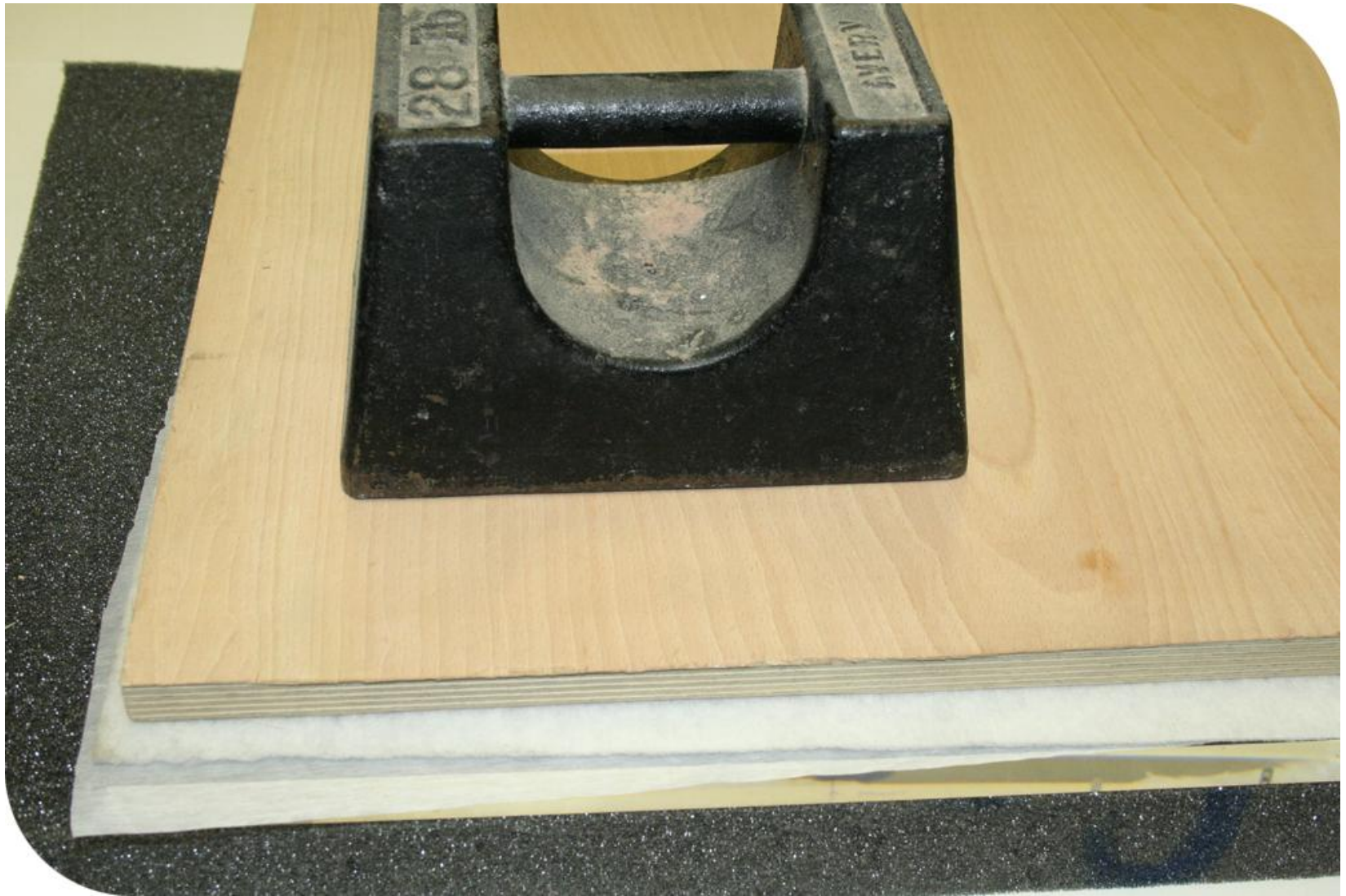
























Mount making

Minimal mounts for pins

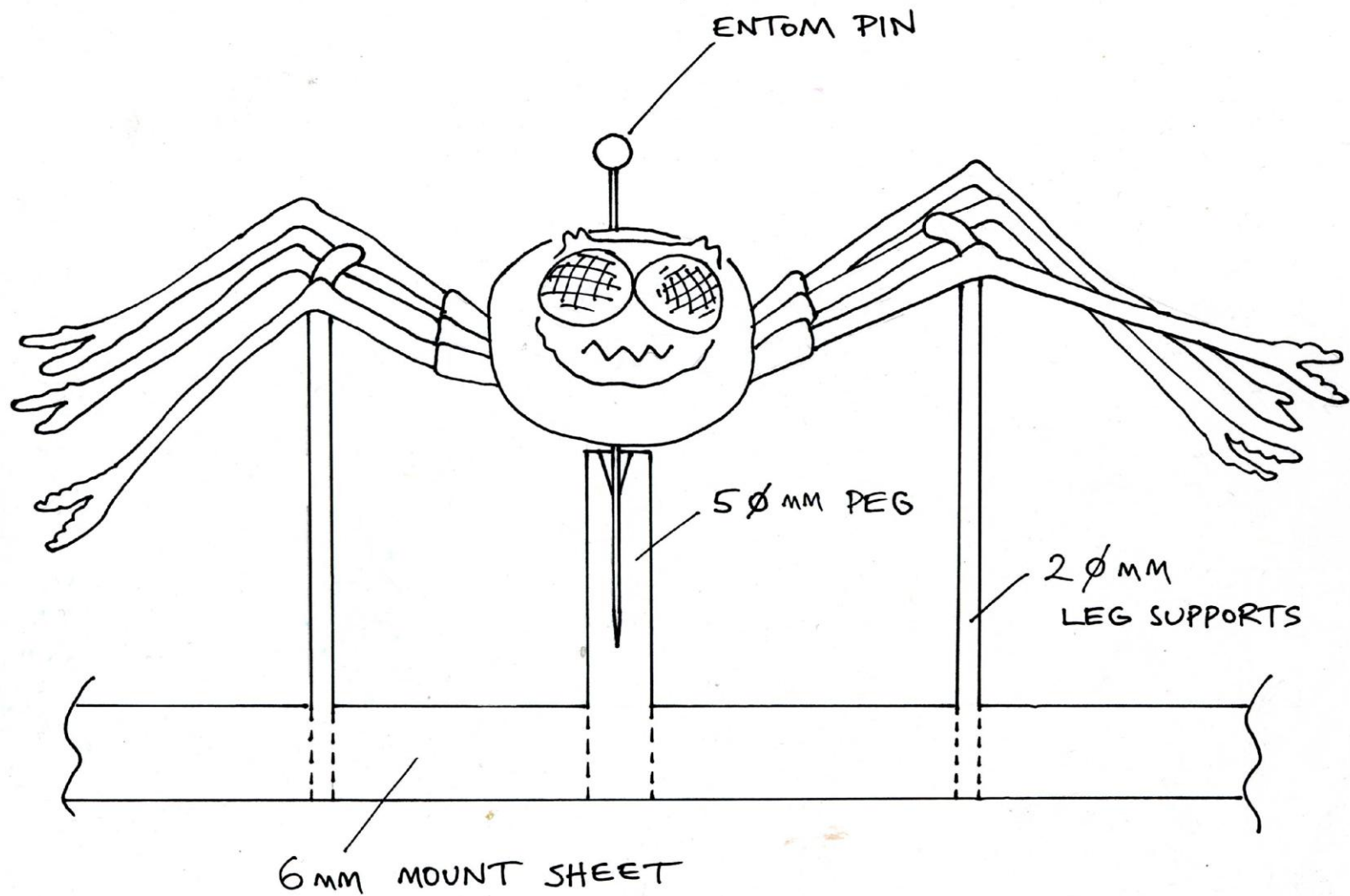










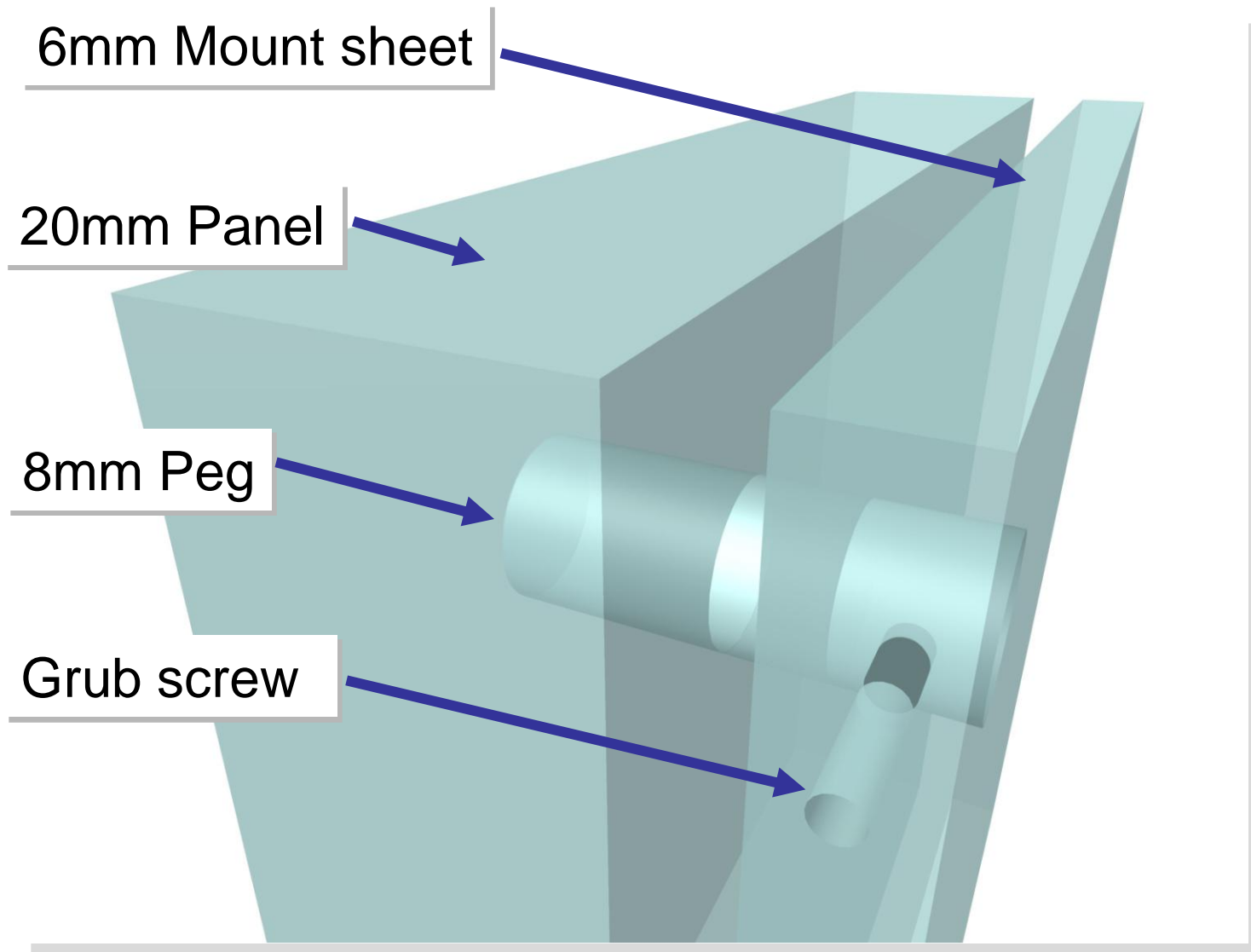




Mount making

Grouping specimens and mounts









Mount making

Blocks for smaller specimens









Installation







