

Indianapolis Museum of Art – Material Analysis Sheet

Material:

12-Ply Birch



Oddy:

Fail

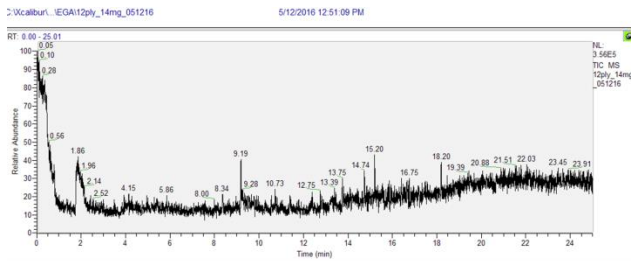
N = 3; measured 3/2016 to 7/2016



Notes: Lead coupon showed accretions. Silver coupon appeared yellow in color, and copper coupon was discolored at the bottom.

Evolved-Gas Analysis:

EGA reveals the presence of possibly acetic acid at 1.86



Microchemical Tests:

Azide: **P**

Chromatropic Acid: **F**

Iodide/Iodate: **F**