

Indianapolis Museum of Art – Material Analysis Sheet

Material:

6-Ply Birch

Oddy:

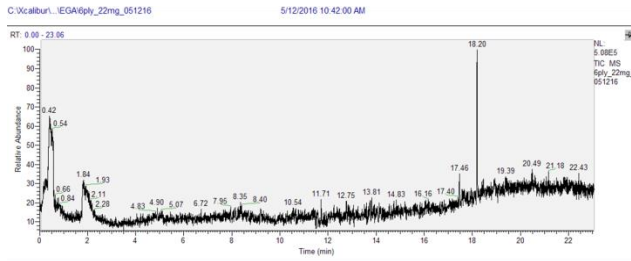
Fail

N = 3; measured 3/2016 to 7/2016



Evolved-Gas Analysis:

EGA reveals the presence of possibly acetic acid at 1.84, and (13R)13-diol-L-abd-14-ene-8 at 18.2



Notes: Lead coupon is coated in white powder.

Microchemical Tests:

Azide: **P**

Chromatropic Acid: **F-S**

Iodide/Iodate: **F**