

Indianapolis Museum of Art – Material Analysis Sheet

Material:

Black Volara Foam

Oddly:

Pass to Temporary

N = 3; measured 3/2016 to 7/2016

Polyethylene



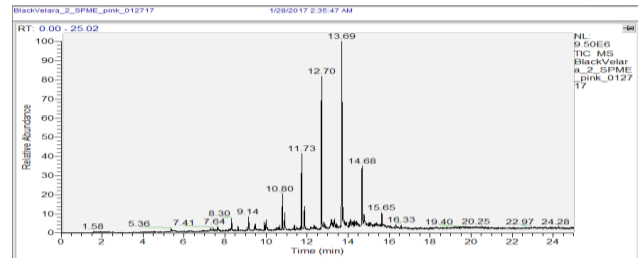
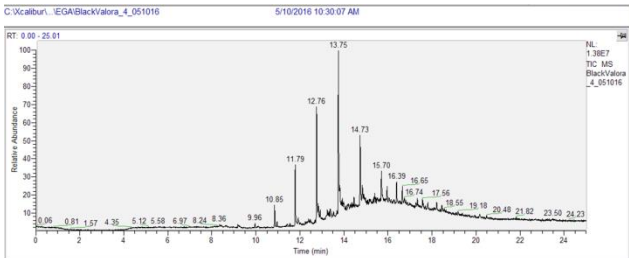
Evolved-Gas Analysis:

EGA reveals the presence of tridecane at 10.85, 7-methyl-pentadecane at 11.79, and high molecular weight hydrocarbons ranging from 12-15.

SPME Analysis:

SPME shows varying lengths of aldehydes from 8 to 10, long chain hydrocarbons from 12 to 16

Notes:



Microchemical Tests:

Azide: **P**

Chromatropic Acid: **P**

Iodide/Iodate: **P**