

VARIATION ON WRAPPER WITH A CLEAR SPINE

This variation on the Wrapper with a Clear Spine was created for some vellum-over-boards bindings on display in Spencer Research Library's North Gallery exhibit area.* This enclosure features an inner flap that closes over the volume from the fore-edge before the rest of the wrapper is closed. This inner flap helps to discourage the tendency of the vellum-covered boards to warp. (*Please see Figures 4 and 5.) These instructions were adapted from a wrapper with polyester film spine first shown to me by Anne Hillam at New York University in 2015.

As with the Wrapper with a Clear Spine, this wrapper works best for small- to medium-sized volumes between ¾-inches and 3 inches thick.

Tools and materials

- Strip of scrap 20-point board
- 20-point board
- Straightedge
- Bone or Teflon folder
- Scalpel/Olfa knife
- Board shear (optional)
- Gouge for thumb notch (optional)
- Double-sided tape
- Polyester film of desired thickness (I generally use 3- or 4-mil.)
- Fine point permanent marker
- Pencil

Prepare wrapper pieces

1. On a strip of scrap 20-point board, mark the length (L), width (W) and depth (D) of the book. Mark out **four** additional board thicknesses (BT) from the D mark, **one** additional BT from the W mark, and **two** additional BT from the L mark, as shown in the drawing. (For 20-point board, the BT should equal about 1/32-inch.) Also make a mark equal to about 1/2 the length of the book (*see note at Figure 2). See example of measuring strip in Figure 1.
2. Cut a piece of 20-point board, grain short, to the length of the book. From this piece, cut pieces 1, 2, and 3 as shown in Figure 2 (score on dashed lines).
 - Cut a thumb notch along one long side of Piece 1 with a sharp gouge, if available, or a scalpel.
3. Cut Piece 4 from 20-point board, grain short, and score as shown in Figure 2.
 - Cut notches from the corners of the right flap on Piece 4 as shown, to about halfway across flap width.
4. Cut a piece of polyester film to the length of the book by (width + 2").

Assemble wrapper

1. Apply double-sided tape along the long side of Piece 1, opposite the thumb notch, and adhere the polyester film overlapping 1".
2. Apply double-sided tape on top of the film and place Piece 2 on top, as shown in Figure 3.*
3. Mark the spine width – (D + 3BT) – on the film with permanent marker. Apply double-sided tape to Piece 4 along the left edge of the center section; align spine width marks to this edge and adhere film to Piece 4. Pinch film against edges of board to crease and shape spine.
4. Adhere Piece 3 to Piece 4 with double-sided tape as shown in Figure 3.
5. Insert book and close wrapper in following order:
 - Close flap of Piece 3, followed by lower flap of Piece 4 and upper flap of Piece 4
 - Pieces 1 & 2
 - Insert remaining flap of Piece 4 between 1 & 2

VARIATION ON WRAPPER WITH A CLEAR SPINE, continued

Figure 1

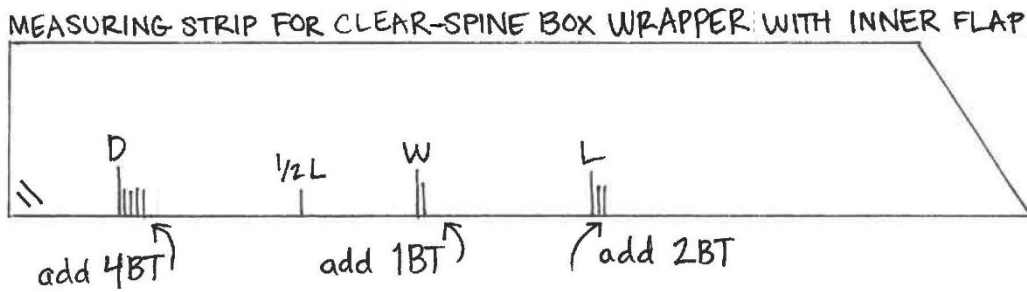
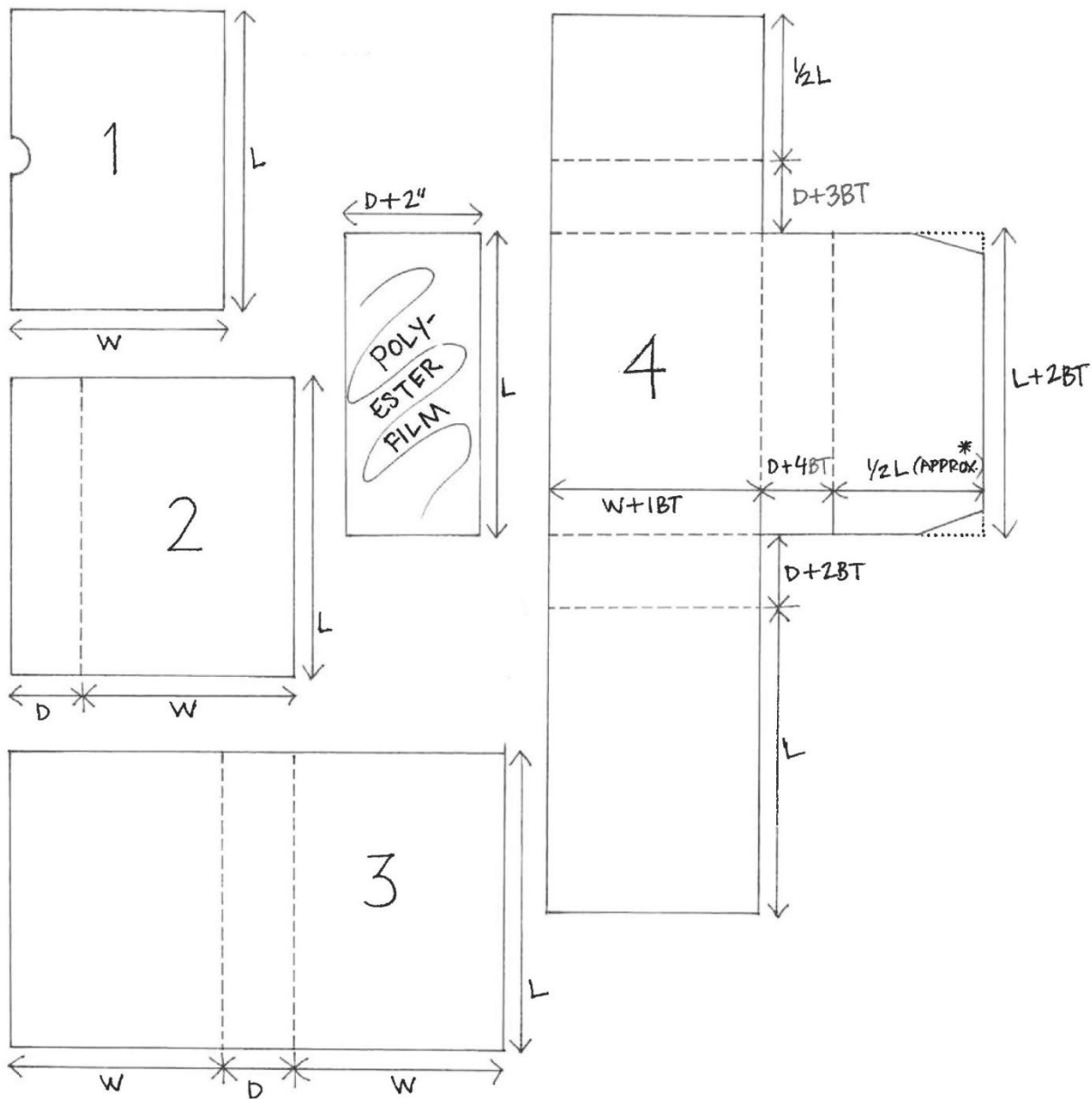
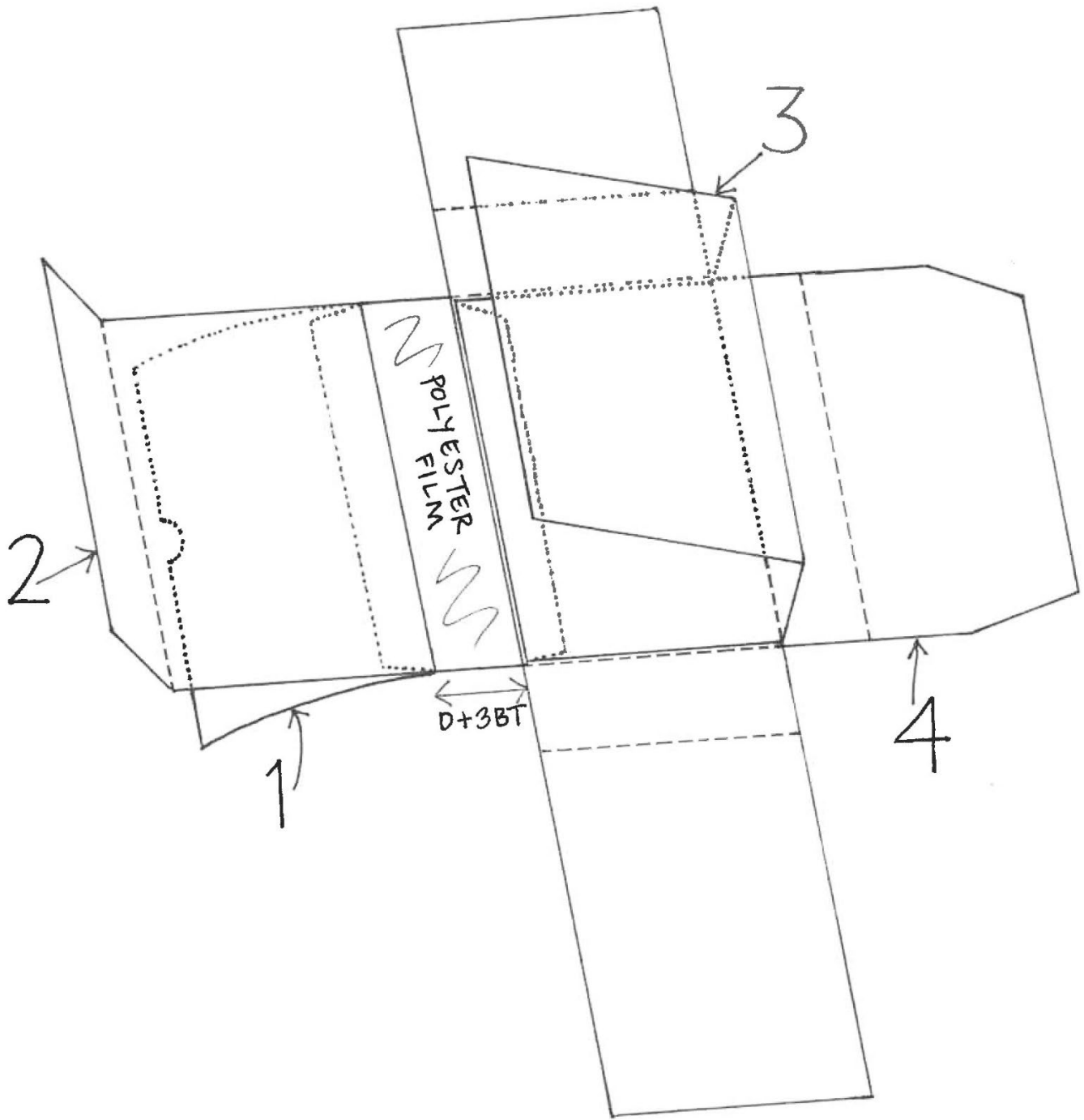


Figure 2



*This measurement will vary according to the width of each volume, but will generally fall somewhere between $\frac{1}{2} W$ and $\frac{1}{2} L$. When adhering Piece 2 to Piece 1, take care to ensure that the flap of Piece 3 will not come into contact with the tape between Pieces 1 and 2 when the wrapper is closed.

Figure 3



VARIATION ON WRAPPER WITH A CLEAR SPINE, continued

Figure 4



Figure 5



Examples of books in clear spine wrappers, from the Summerfield Collection of Early Printed Books on display in the North Gallery of Kenneth Spencer Research Library at the University of Kansas.