

# Indianapolis Museum of Art – Material Analysis Sheet

Material:

Delrin

Oddy:

Fail

N = 3; measured 3/2016 to 7/2016

Polyacetal



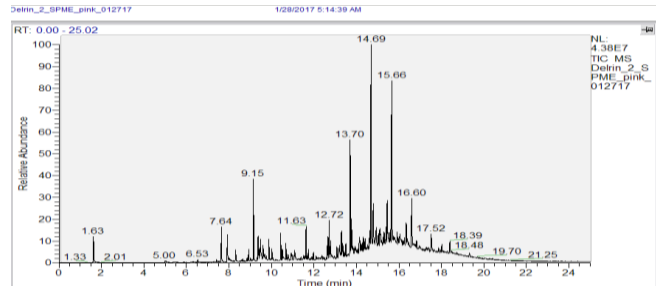
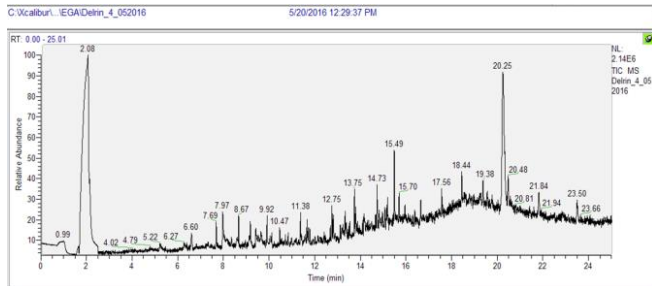
**Evolved-Gas Analysis:**

EGA reveals the presence of formaldehyde at 2.08, and phthalate plasticizer at 15.49. Other large peaks have been attributed to hand oils from delivery.

**SPME Analysis:**

SPME shows formaldehyde at 1.62, hydrocarbons from 12 to 18.

Notes: Lead coupon in white in color with brown accretions



Microchemical Tests:

Azide: **P**

Chromatropic Acid: **F**

Iodide/Iodate: **P**