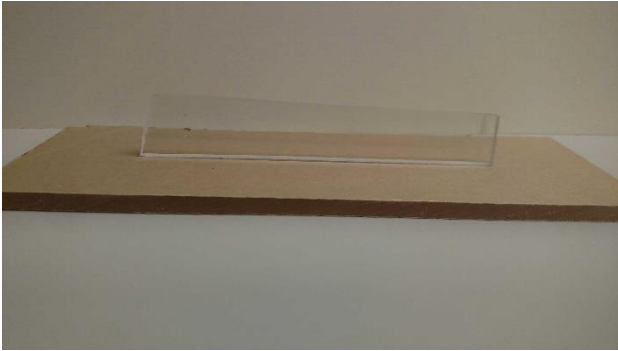


# Indianapolis Museum of Art – Material Analysis Sheet

Material:

Plexi Glass

Polymethyl methacrylate



Oddly:

Pass

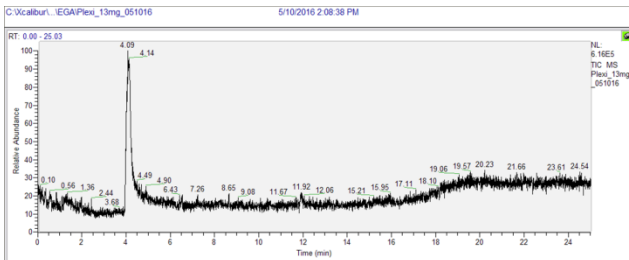
N = 3; measured 3/2016 to 7/2016



Notes: Some loss of polish on lead, but not due to corrosion

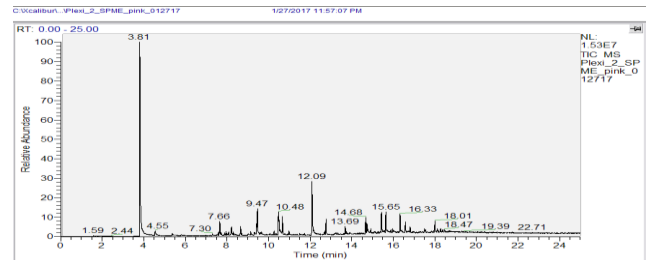
### Evolved-Gas Analysis:

EGA reveals the presence of methacrylic acid methyl ester at 4.08



### SPME Analysis:

SPME shows methacrylic acid methyl ester at 3.81, o-hydroxybiphenyl at 12.09, propanoic acid derivative at 12.77, hydrocarbons at 14 and then peaks attributed to finger oils from 16 to 18.



### Microchemical Tests:

Azide: **P**

Chromatropic Acid: **F-S**

Iodide/Iodate: **P**