

# Indianapolis Museum of Art – Material Analysis Sheet

Material:

Ash Hardwood

Oddy:

Fail

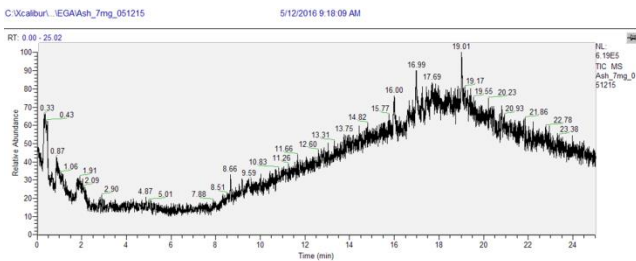
N = 3; measured 3/2016 to 7/2016



Notes: Lead has fine crystals covering coupon. Copper coupon appeared dark at the bottom edge.

### Evolved-Gas Analysis:

EGA reveals the presence of no noticeable peaks.



Microchemical Tests:

Azide: **P**

Chromatropic Acid: **F-S**

Iodide/Iodate: **F**